

Installation Guide

Solenoid Valve

Types EVRH 10 – 22 Normally Closed and Normally Open (NC/NO)

032R9548

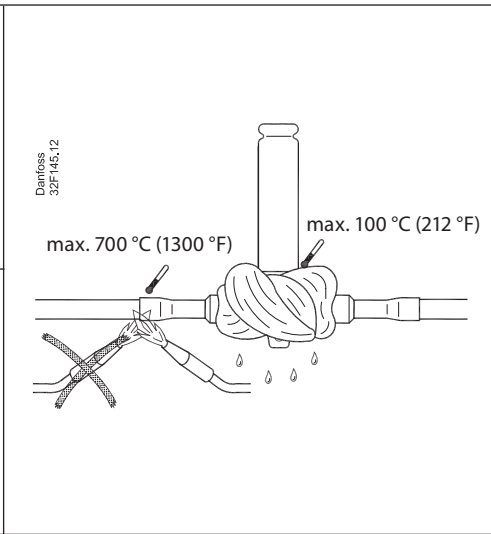
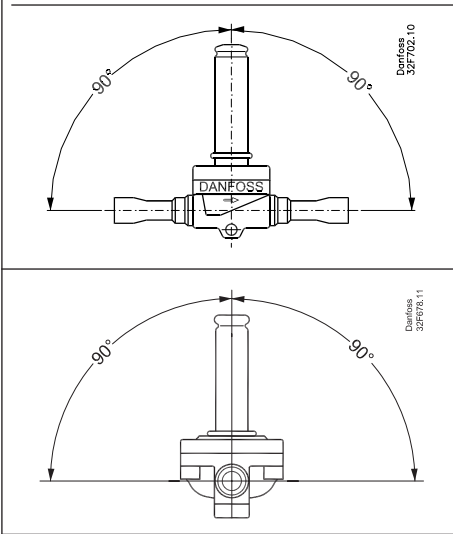
Refrigerants:

R744, R22/R407C, R404A/R507, R410A, R134a, R407A, R23.
For other refrigerants, please contact Danfoss.

EVRH 10, EVRH 15, EVRH 18, EVRH20, EVRH 22 (NC)

EVRH 10, EVRH 15, EVRH 20, EVRH (NO)

Note: tube construction



Type	[Nm]	[kpm]	[ft-lbs]	Torx size
EVRH 10	5	0.5	3.6	T30
EVRH 15 – 18	14	1.4	10	T30
EVRH 20 – 22	20	2.0	14	T40

UL approved coils

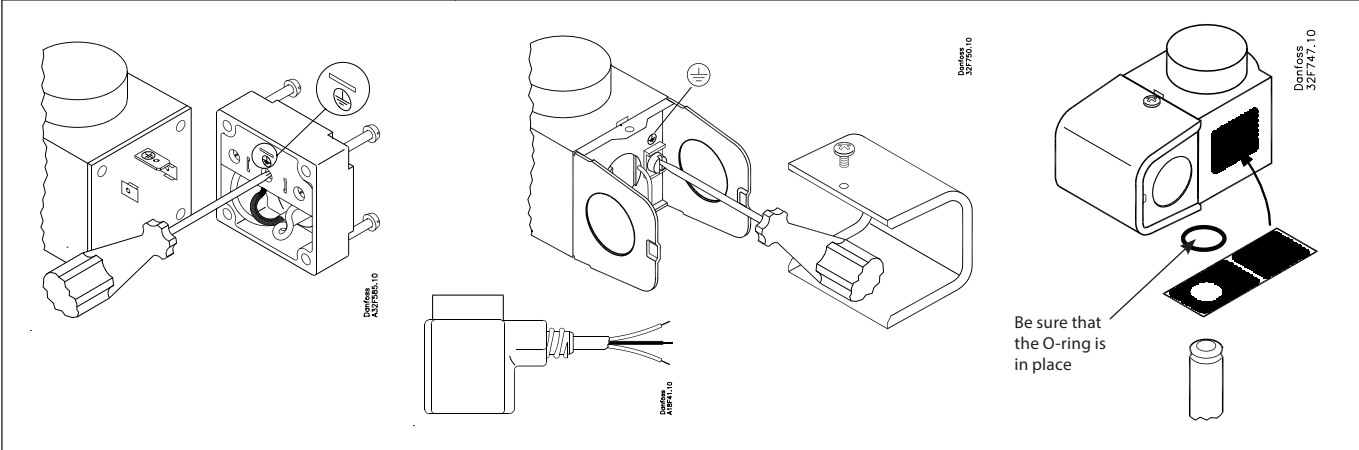
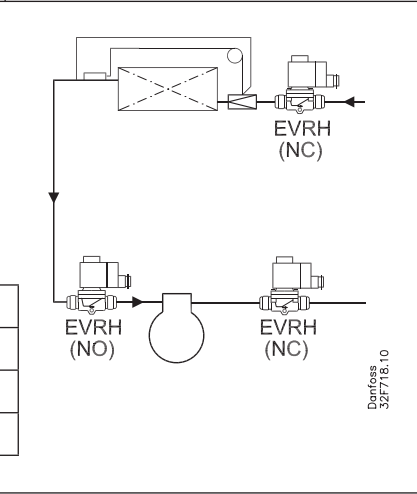
14 W a.c.
t_{max.} = 122 °F (50 °C)

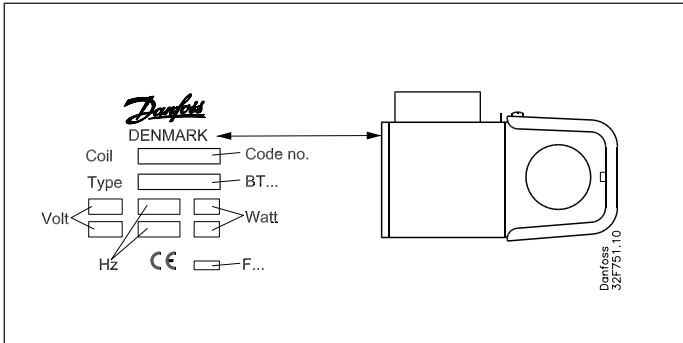
t_{min.} = -40 °F (-40 °C)

Data on armature tube
US data on label

10/12 W a.c.		t _{max.} = 80 °C (175 °F)
20 W a.c.		t _{max.} = 50 °C (120 °F)
20 W a.c.		t _{max.} = 50 °C (120 °F)
		t _{min.} = -40 °C (175 °F)

Min. medium temperature	-40 °C (-40 °F)
Max. medium temperature	-105 °C (221 °F)
Max. working pressure PS/MWP	45.2 barg / 655 psig
Max. opening diff. pressure MOPD	





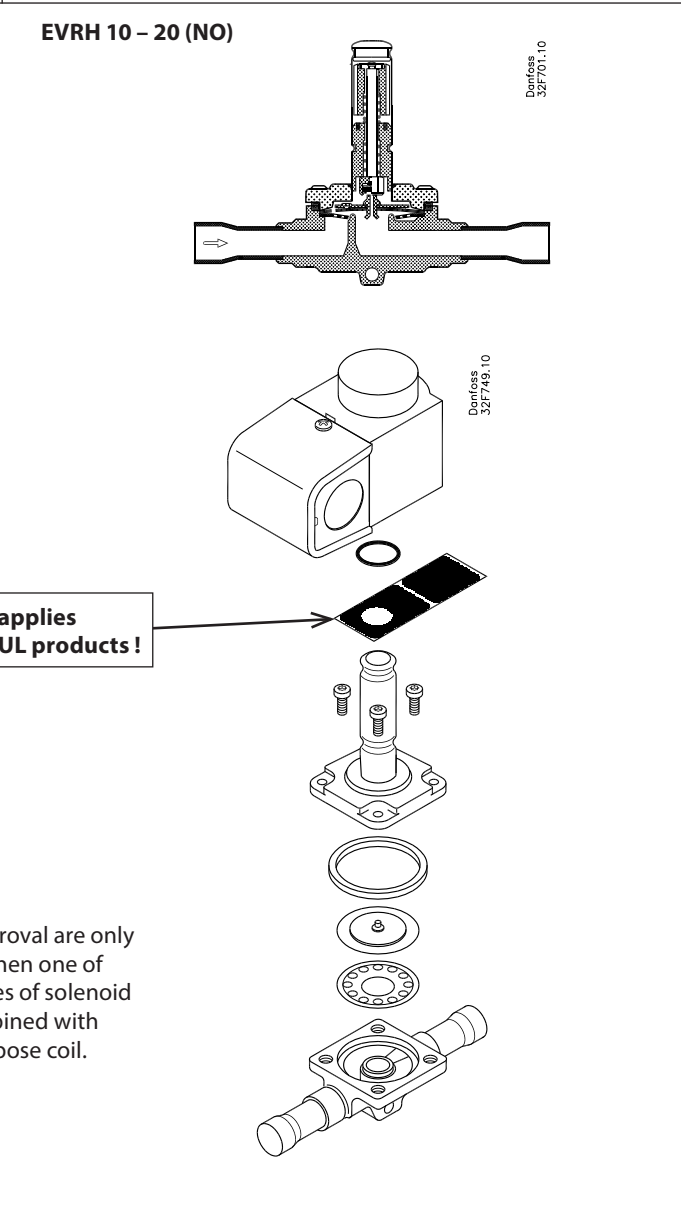
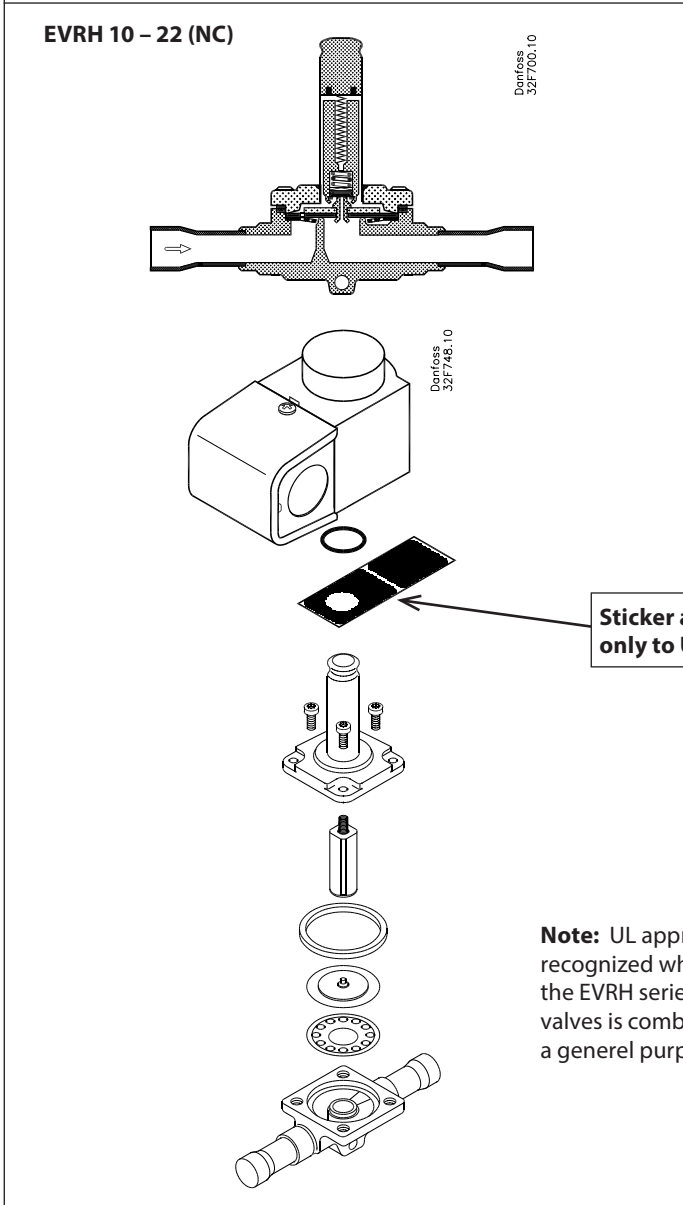
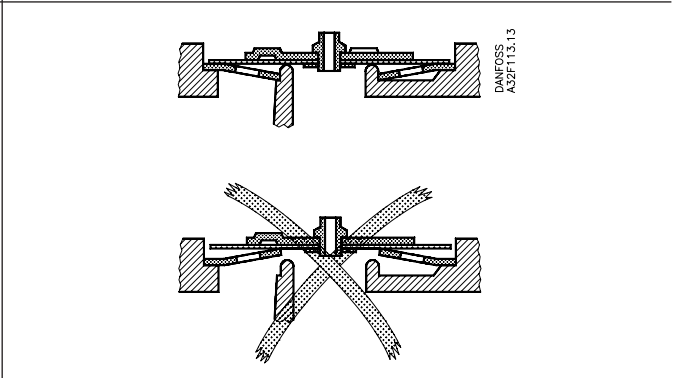
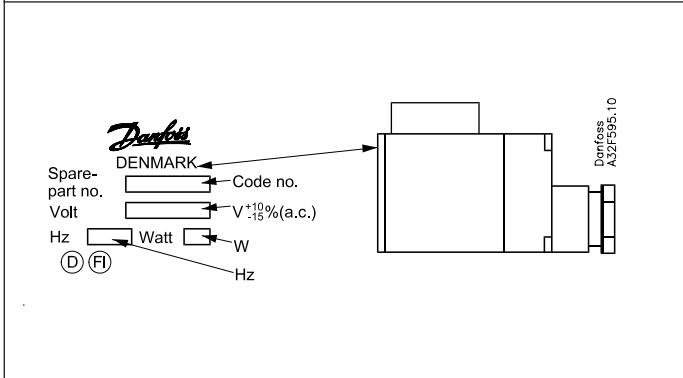
Warning

Never switch on power to the coil when the coil is dismantled from the valve. Otherwise the coil may be damaged and there is risk of injuries and burns.

On ↓
Off ↙

Note 2+3
See instruction IC.PI.600.A1.22

Danfoss 32F721.10



Sticker applies only to UL products !

Note: UL approval are only recognized when one of the EVRH series of solenoid valves is combined with a general purpose coil.