

Installation Guide

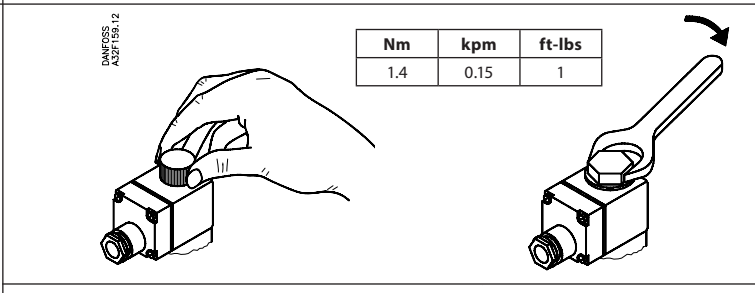
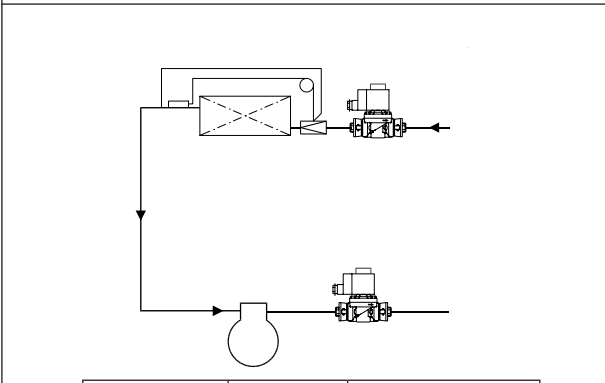
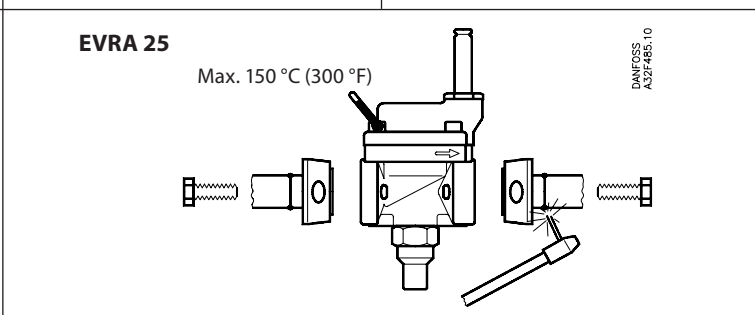
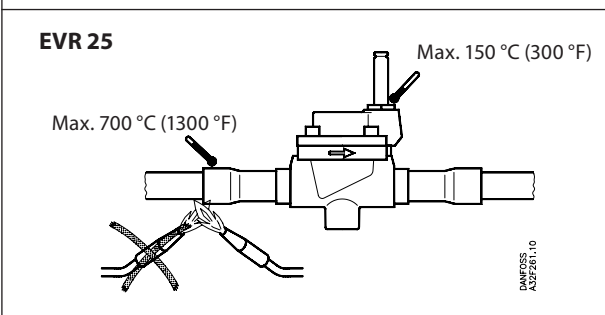
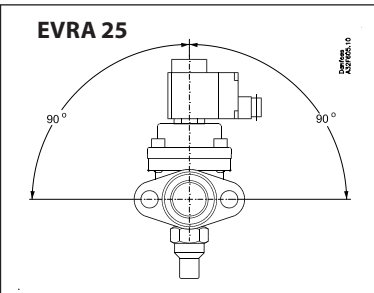
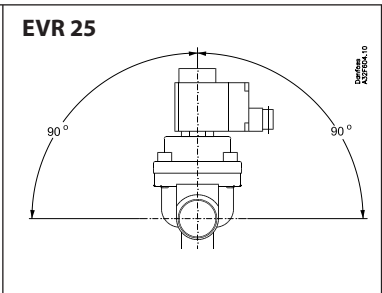
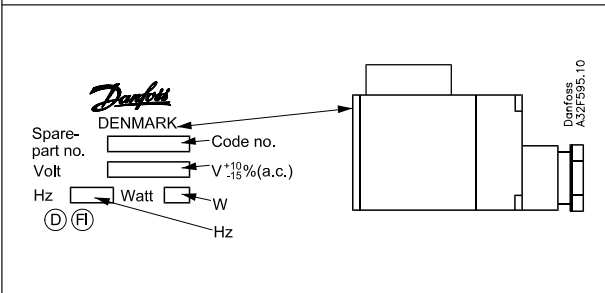
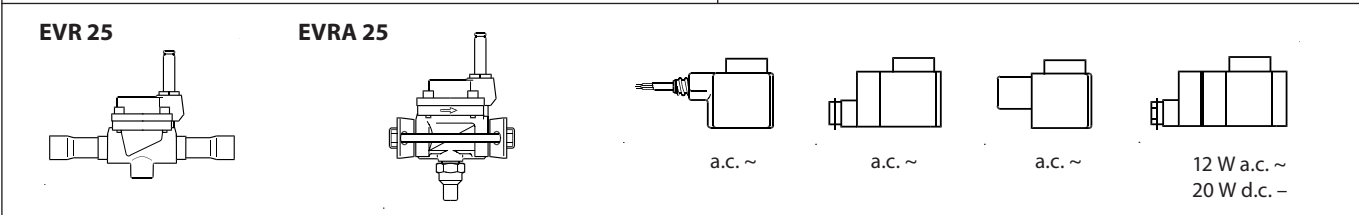
Solenoid Valve

Types EVR 25, EVRA 25

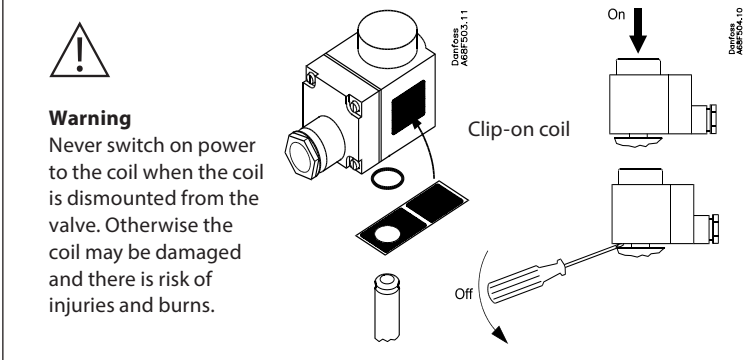
032R9520

Refrigerants EVR: R22/R407C, R404A/R507, R410A, R134a, R407A, R23. EVRA: R717, R22/R407C, R404A/R507, R410A, R134a, R407A, R23. For other refrigerants, please contact Danfoss.	Max. working pressure: EVR 25 PS / MWP = 32 bar (405 psig) EVRA 25 PS / MWP = 42 bar (600 psig)
	Medium temperature: EVR 25 / EVRA 25 Min. -40 °C (-40 °F) Max. 105 °C (221 °F)
	Max. opening diff. pressure (MOPD) →

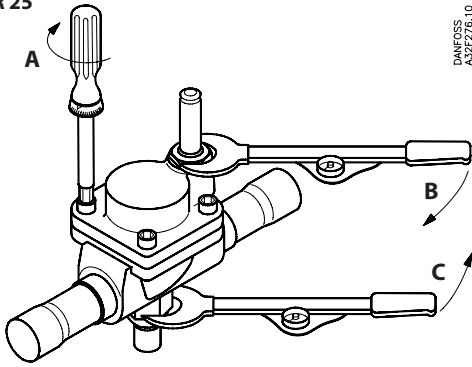
032R9520



10 W a.c.		t _{max.} 80 °C (175 °F)
10 / 12 W a.c.		t _{max.} 80 °C (175 °F)
20 W d.c.		t _{max.} 50 °C (120 °F)



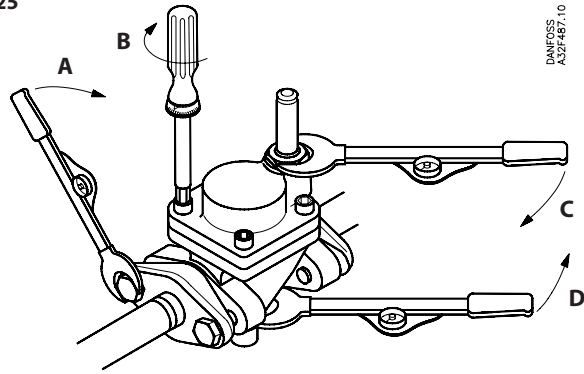
EVR 25



DANFOSS
A3ZF276.10

	[Nm]	[kpm]	[ft-lbs]
A	30	3.0	22.5
B	50	5.0	37
C	30	3.0	22.5

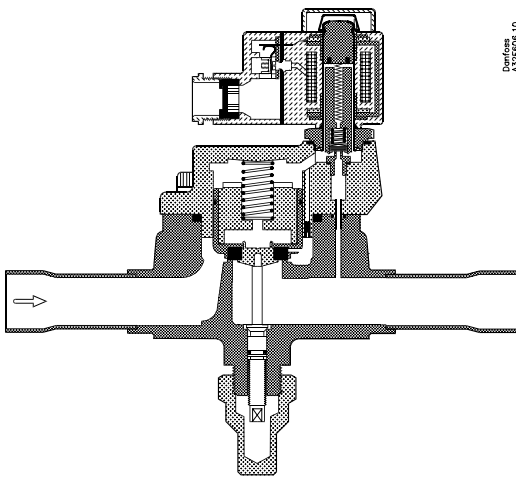
EVRA 25



DANFOSS
A3ZF487.10

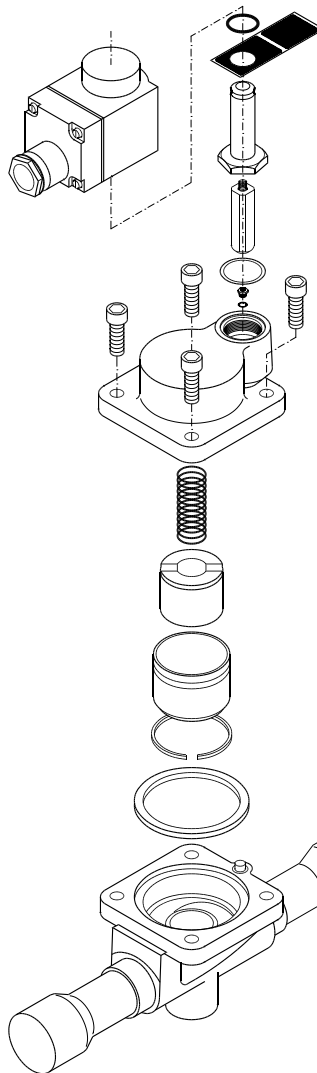
	[Nm]	[kpm]	[ft-lbs]
A	60	6.0	45.0
B	30	3.0	22.5
C	50	5.0	37
D	30	3.0	22.5

EVR 25



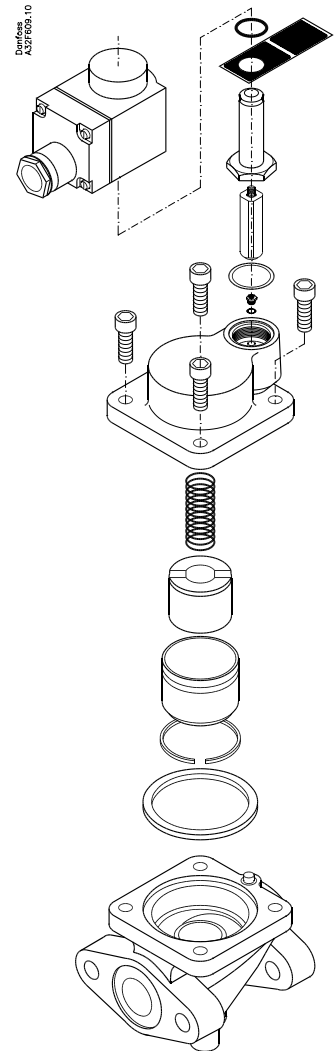
Danfoss
A3ZF606.10

EVR 25



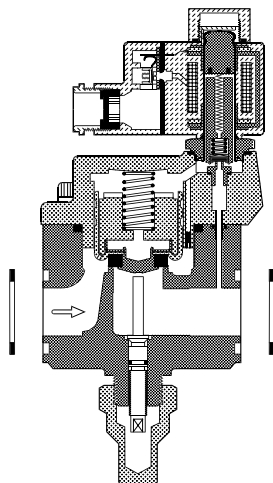
Danfoss
A3ZF606.10

EVRA 25



Danfoss
A3ZF606.10

EVRA 25 (NC)



DANFOSS
A3ZF376.11