

# Installation Guide

## Solenoid Valve

### Type EVR 25

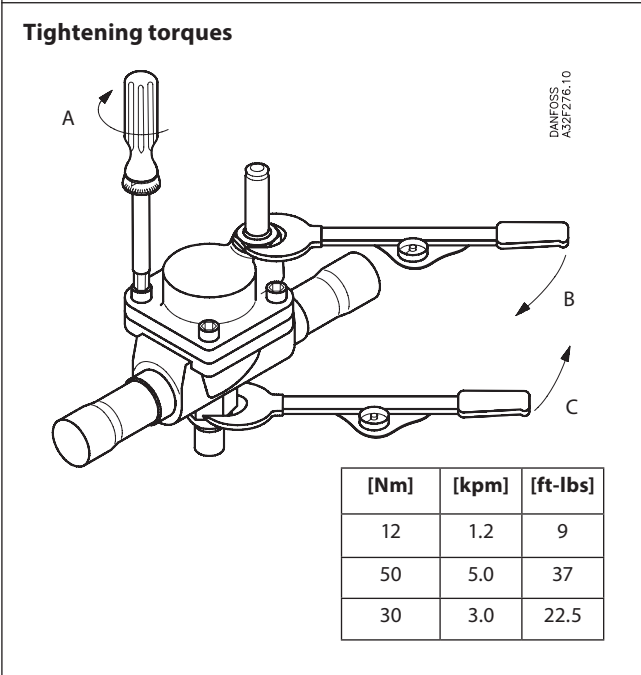
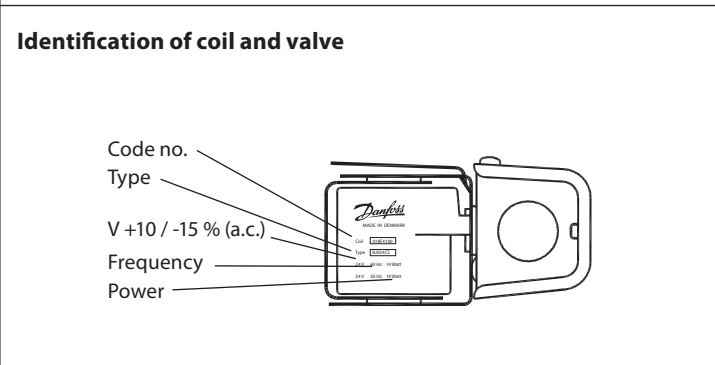
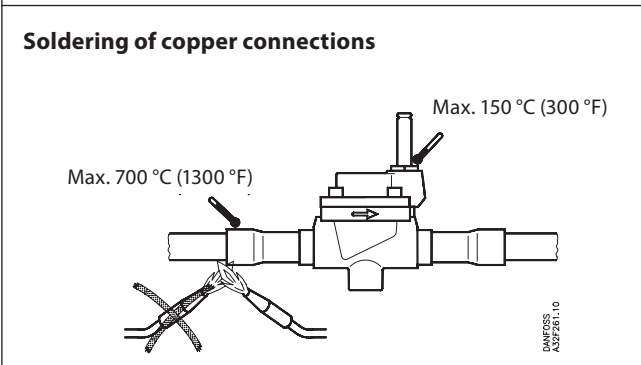
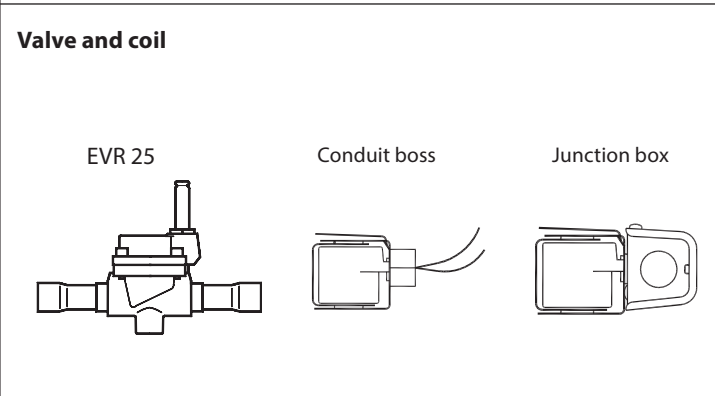
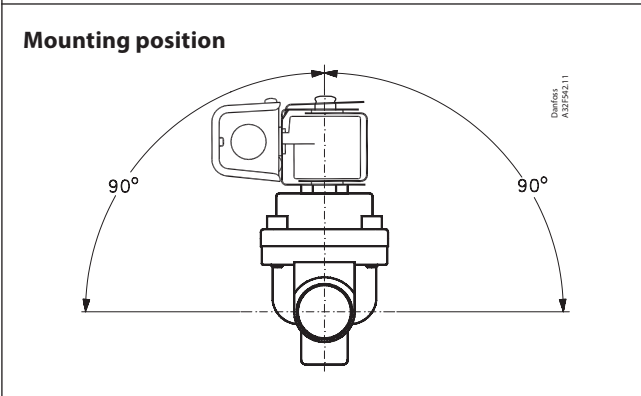
032R9523

**Refrigerants**  
 R22/R407C, R404A/R507, R410A, R134a, R407A, R23.  
 For other refrigerants, please contact Danfoss.

**Max. working pressure:** 500 psig (35 bar)  
**Max. test pressure:** 650 psig (45 bar p<sub>e</sub>)  
**Max. opening diff. pressure (MOPD):** a.c. 350 psig (24 bar p<sub>e</sub>)  
 d.c. 205 psig (14 bar p<sub>e</sub>)

**Refrigerant temperature:** Min. -40 °F (-40 °C) Max. 220 °F (105 °C)

**Ambient temperature:** Min. -40 °F (-40 °C) Max. 122 °F (50 °C)



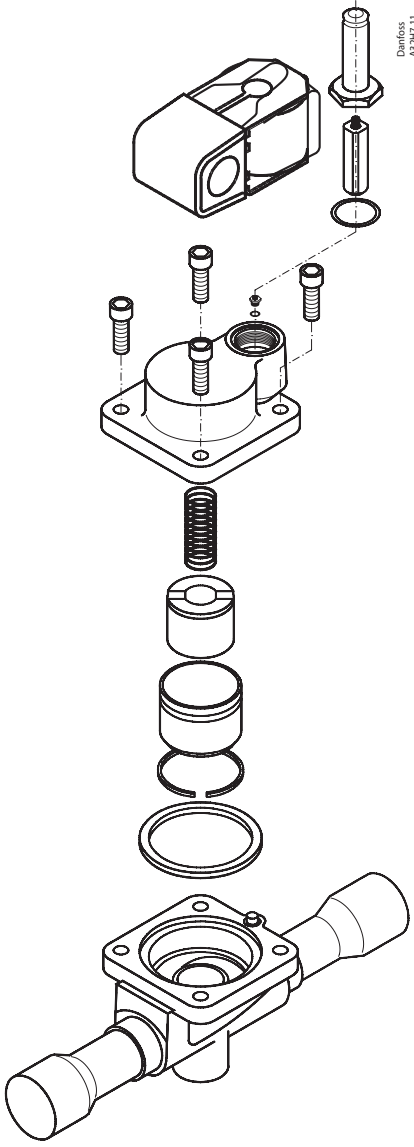
**Caution**  
 Wiring and fusing (when used) must comply with prevailing local and national wiring codes and ordinances.

**Warning**  
 Never switch on power to the coil when the coil is dismantled from the valve. Otherwise the coil may be damaged and there is risk of injuries and burns.

**Transformer selection**

Coil	Inrush	Holding		
		[Volt-Amp]	[W]	[Volt-Amp]
208 – 240 V	50 Hz	49	14	28
230 V	50 Hz	49	17	28
110 V	50 – 60 Hz	49	16	28
120 V	60 Hz	49	15	28
24 V	50 – 60 Hz	49	14	28

Valve and coil construction



Cut-away

