

# Installation guide

## Filter drier, shell

### Type DCR

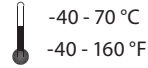
023R9504

023R9504

#### Refrigerants:

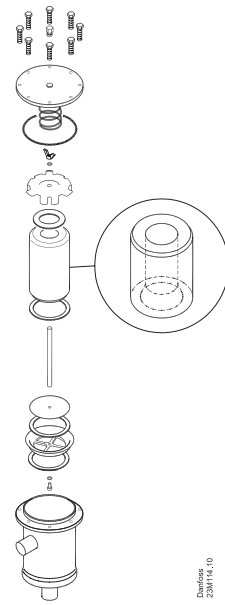
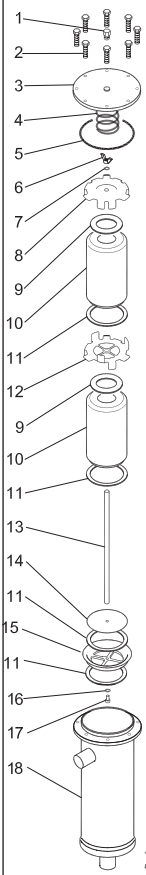
R134a, R404A, R407C, R507, R22, R410A and other refrigerants (HCFC, HFC, HFO)

#### Temperature range:



#### Design

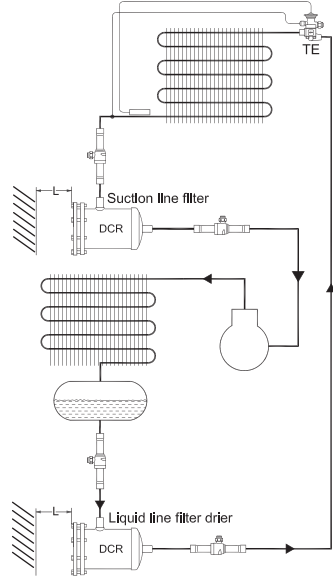
Pos.	Description
1	Plug 1/4 in. NPT
2	Top cover bolts M8 x 35
3	Top cover
4	Spring
5	Top cover gasket Ø121.8 x Ø113.6 x 0.8mm
6	Wing nut M10 (torque max. 3 Nm)
7	Lock washer
8	Top plate
9	Felt gasket Ø95.5 x Ø45.5 x 2 mm
10	Solid core
11	Felt gasket Ø95.5 x Ø78 x 2 mm
12	Core plate
13	Distance rod
14	Wire Mesh
15	Core holder
16	Washer
17	Hex Socket Head Screw M6
18	Filter drier shell



Danfoss  
2304115.10.10

Danfoss  
2304115.10

#### Installation

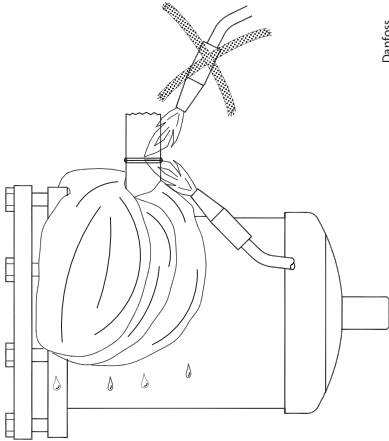


Danfoss  
2327017

Type	L minimum		Maximum working pressure PS / MWP [bar] / [psig]
	[mm]	[in]	
DCR 048	170	7	46 / 667
DCR 096	310	13	46 / 667
DCR 144	310	13	35 / 507 <sup>1)</sup>
			46 / 667 <sup>2)</sup>
DCR 192	310	13	28 / 406 <sup>1)</sup>
			40 / 580 <sup>2)</sup>

<sup>1)</sup> For usage with strainer or as a receiver application  
<sup>2)</sup> For "drier" application using all the permissible cores

**Soldering**



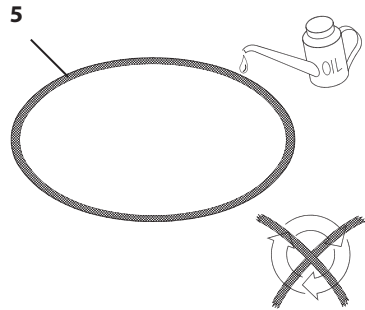
Danfoss  
23M71.12

Connector type	Soldering material
Copper	Min. 5 % Ag
Steel	Silver-flo 55 + Easy-flow flux

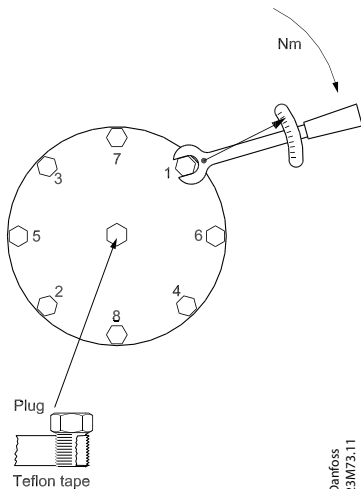


Do not install DCR insert before soldering

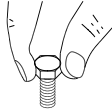
**Gasket**



**How to tighten the bolts**



Danfoss  
23M73.11

Step 1	 Fingertighten all bolts
Step 2	3 Nm
Step 3	10 Nm
Step 4	20 Nm
Step 5*	35 Nm

\* Repeat until complete tightness has been reached.