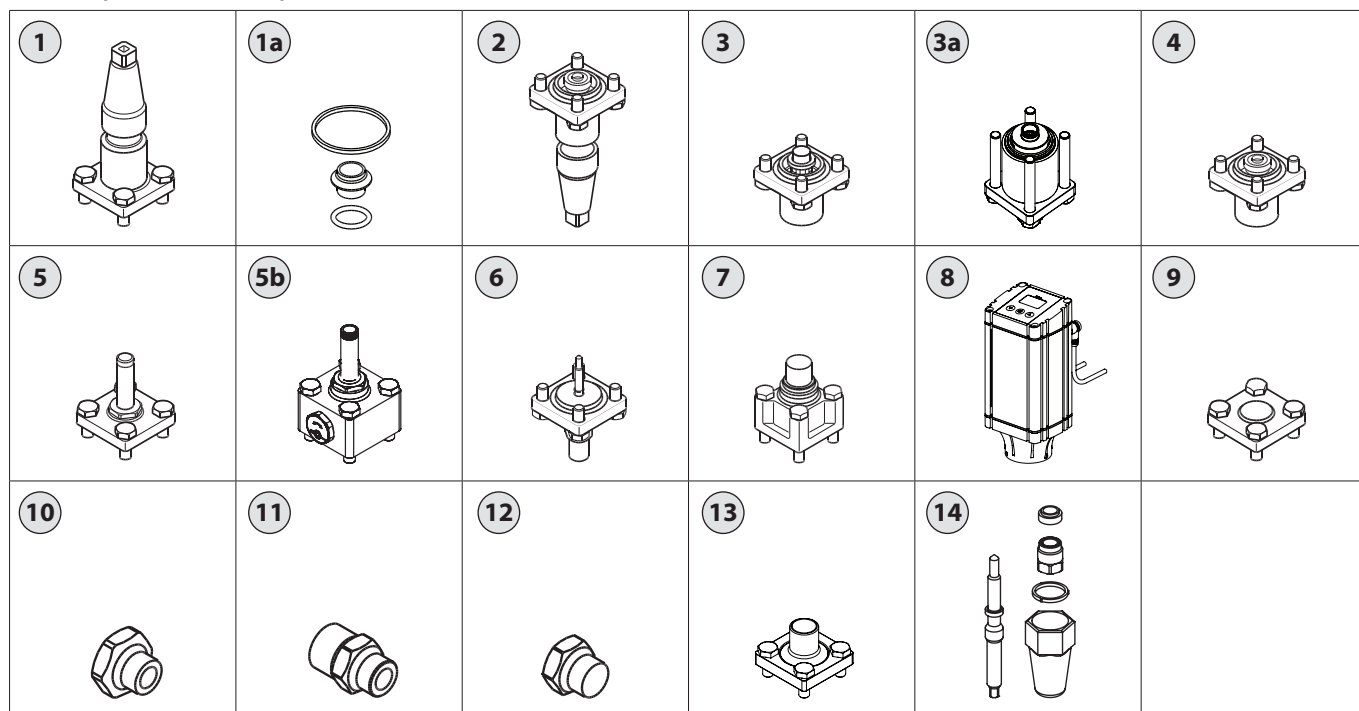


## Data sheet – Spare parts and accessories

### Valve station ICF 15, ICF EVRAT, ICF 20



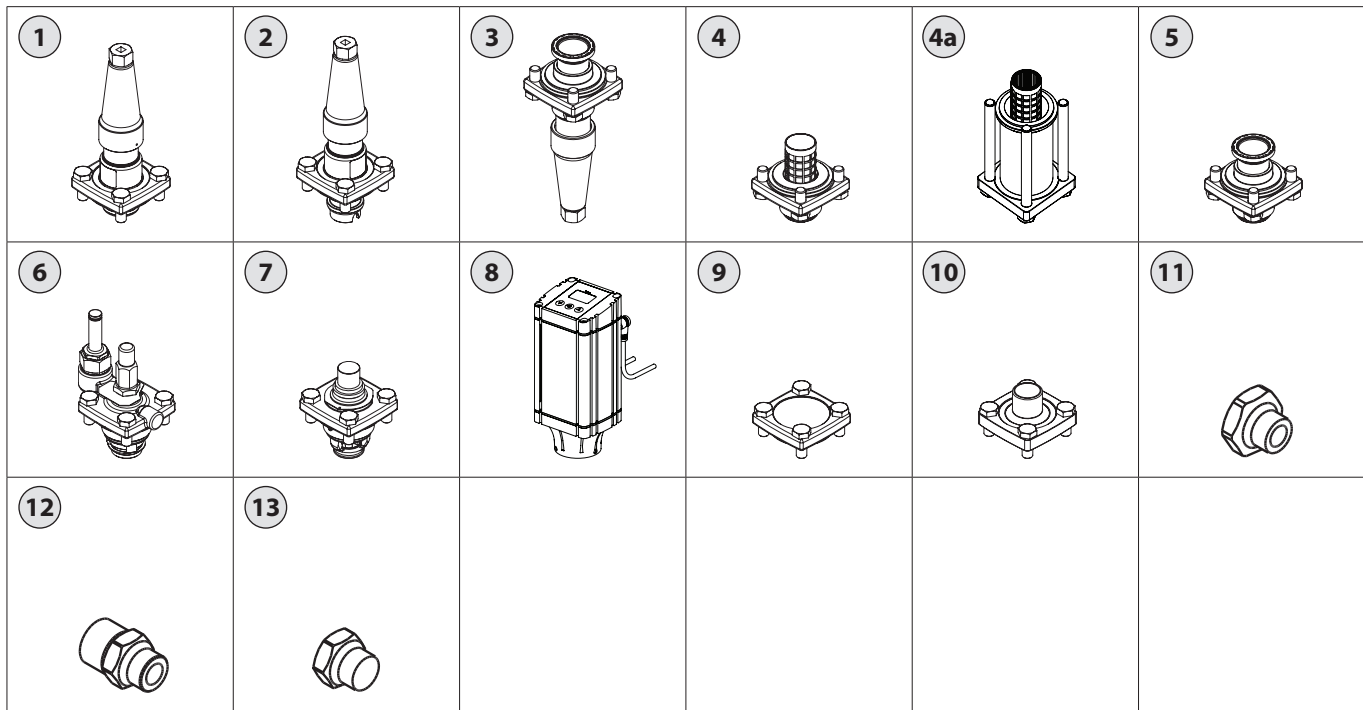
Description	Fig #	Qty.	Code no.
<b>Stop, Check, Stop/check and Regulating valve module</b>			
ICFS 15 – Stop valve module	1	1	148B5276
ICFS 20 – Stop valve module	1	1	027L1250
ICFR 20A – Manual regulating valve (incl. PEEK seat)	1 + 1a	1	027L1254
ICFR 20B – Manual regulating valve (incl. PEEK seat)	1 + 1a	1	027L1255
ICFN 20 – Stop/check valve module	2	1	027L1253
ICFC 20 – Check valve module	4	1	027L1252
Packing gland for ICFS 20, ICFR 20, ICFN 20	-	1	148B4056
Cap for ICFS 20 and ICFR 20	-	1	148B4075
Handwheel for ICFS 20	-	1	148B4060
Inspection kit for ICFS 15	-	1	148B6051
Repair kit for ICFS 15	-	1	148B6061
Overhaul kit for ICFS 15	-	1	148B6151
<b>Filter module</b>			
ICFF 15 – Filter module G 1/4"	-	1	027L1246
ICFF 15 – Filter module 3/8" NPT	-	1	027L1247
ICFF 20 – Filter module (incl. adaptor and pleated insert (150 µ (100 mesh) / 45 cm <sup>2</sup> (7.0 in <sup>2</sup> ))	3	1	027L1251
ICFF 20E – Filter module (incl. adaptor and pleated insert (250 µ (72 mesh) / 160 cm <sup>2</sup> (24.8 in <sup>2</sup> ))	3a	1	027L2256
Filter element for ICFF 15	-	1	148H1136
Filter element for ICFF 20 74 µ	-	1	148H3292
Filter element pleated for ICFF 20 150 µ	-	1	148H3303
Filter element pleated for ICFF 20 250 µ	-	1	148H3363
Filter element pleated for ICFF 20E, 250 µ	-	1	148H3269
<b>Solenoid valve module</b>			
ICFE 20 – Solenoid valve module	5 + 1a	1	027L1257
ICFE 20H – Solenoid valve module High Capacity	5b	1	027L1270
Repair kit for ICFE 20: Armature assembly, Diaphragm assembly, Al. gasket, O-ring	-	1	032F8030
<b>Manual opening module</b>			
ICFO 20 – Manual opening module	6	1	027L1260
<b>Electronic expansion valve module</b>			
ICFA 20 – Electronic expansion valve module	5 + 1a	1	027L1258
Armature kit for ICFA 20 Armature, Armature tube assembly, Alu gasket	-	1	068F5045

Description	Fig #	Qty.	Code no.
<b>Motor valve module</b>			
ICM 20-A33 – Motor valve module	7 + 1a	1	027H1186
ICM 20-A – Motor valve module	7 + 1a	1	027H1180
ICM 20-B66 – Motor valve module	7 + 1a	1	027H1194
ICM 20-B – Motor valve module	7 + 1a	1	027H1181
ICM 20-C – Motor valve module	7 + 1a	1	027H1182
ICAD 600A – Actuator with 1.5 m (60 in.) cables	8	1	027H9075
ICAD 600A – Actuator without cables	8	1	027H9120
<b>Blank top cover and welding module</b>			
ICFB 20 – Blank top cover	9	1	027L1259
ICFW 20 – Welding module 20 DIN	13	1	027L1245
ICFW 20 – Welding module 3/4" SOC	13	1	027L1230
<b>Gaskets and O-rings for ICF 20</b>			
- O-rings bonnet-flange	1a	6	027L1261
Stop, reg and stop-check valves and ICM:			
- Gasket for a cap	1a	3	
- O-ring for orifice		1	
- O-ring for check valve		1	
Solenoid valve module:			
- O-ring for armature	1a	2	
- O-ring for orifice		1	
Al-gaskets for side ports	1a	6	
<b>For ICF side ports</b>			
For ICF side ports: Sight glass G 1/8" (including Al.gasket, for ICF with DIN and ANSI connections only)	10	2	027L1267
Nippel for side connection G 3/8"- G 1/2" (including Al.gasket, for ICF with DIN and ANSI connections only)	11	2	027L1266
Blind for side connection G 3/8" (including Al.gasket, for ICF with DIN and ANSI connections only)	12	2	027L1265
Sight glass NPT 3/8" (for ICF with SOC connections only)	-	2	027L1269
Blind for side connection NPT 3/8" (for ICF with SOC connections only)	-	2	027L1268
<b>For ICF EVRAT</b>			
Repair kit (manual opener) for all ICF EVRAT	14	1	027L1248

**All modules include a gasket and four bolts when supplied.**

Data sheet – Spare parts and accessories

Valve station  
ICF 25



Description	Fig #	Qty.	Code no.
<b>Stop, Check, Stop/check and Regulating valve module</b>			
ICFS 25 – Stop valve module	1	1	027L2250
ICFR A 25 – Manual regulating valve	2	1	027L2254
ICFR B 25 – Manuel regulating valve	2	1	027L2255
ICFN 25 – Stop/Check valve module	3	1	027L2253
ICFC 25 – Check valve module	5	1	027L2252
Packing gland for ICFS 25, ICFR 25, ICFN 25	-	1	148B4032
Cap for ICFS 25 and ICFR 25	-	1	148B4076
Handwheel for ICFS 25	-	1	148B4062
<b>Filter module</b>			
ICFF 25 – Filter module (incl. pleated insert (150 µ (100 mesh) / 160 cm <sup>2</sup> (24.8 in <sup>2</sup> )))	4	1	027L2251
ICFF (25-40)E – Filter module (incl. pleated insert (250µ (72 mesh) / 330 cm <sup>2</sup> (51.2 in <sup>2</sup> )))	4a	1	027L2299
Filter element for ICFF 25 100 µ	-	1	148H3123
Filter element for ICFF 25 150 µ	-	1	148H3125
Filter element pleated for ICFF (25-40)E 250 µ	-	1	148H3296
<b>Solenoid valve module</b>			
ICFE 25 – Solenoid valve module	6	1	027L2257
<b>Motor valve module</b>			
ICM 25-A – Motor valve module	7	1	027H2180
ICM 25-B – Motor valve module	7	1	027H2181
ICAD 600A – Actuator with 1.5 m (60 in.) cables,	8	1	027H9075
ICAD 600A – Actuator without cables	8	1	027H9120
<b>Blank top cover and welding module</b>			
ICFB 25 – Blank top cover	9	1	027L2259
ICFW 25 – Welding module 25DIN	10	1	027L2265
ICFW 25 – Welding module 25SOC	10	1	027L2263

Description	Fig #	Qty.	Code no.
<b>Gaskets and O-rings for ICF 25</b>			
O-rings bonnet-flange	-	6	027L2260
Stop, reg and stop-check valves	-	3	
Gasket for a cap	-	1	
O-ring for check valve	-	1	
Solenoid valve module:			
O-ring for armature	-	1	
O-ring for insert	-	1	
O-ring for inserts (small)	-	2	
Locking ring	-	1	
ICM:			
O-ring for insert	-	1	
O-ring for inserts (small)	-	1	
Side ports:			
Al-gaskets	-	6	
<b>For ICF side ports</b>			
For ICF side ports:			
Sight glass G 1/8" (including Al.gasket, for ICF with DIN and ANSI connections only)	11	2	027L1267
Nippel for side connection G 3/8" - G 1/2" (including Al.gasket, for ICF with DIN and ANSI connections only)	12	2	027L1266
Blind for side connection G 3/8" (including Al.gasket, for ICF with DIN and ANSI connections only)	13	2	027L1265
Sight glass NPT 3/8" (for ICF with SOC connections only)	-	2	027L1269
Blind for side connection NPT 3/8" (for ICF with SOC connections only)	-	2	027L1268

All modules include a gasket and four bolts when supplied.