

## Solenoid valves EV250B Normally Closed (NC)

### Types

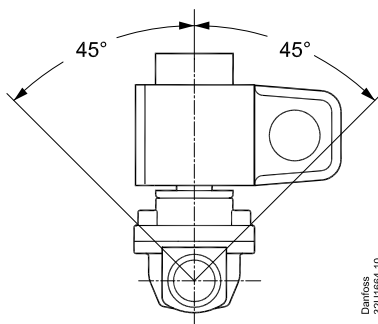
Type EV250B 10 - 12 - 18 - 22 Normally closed (NC)

### Coils

50/60 Hz	Code no.	
	Junction box	Conduit hub
24 V	<b>018Z7683</b>	<b>018Z7693</b>
110-120 V	<b>018Z7682</b>	<b>018Z7692</b>
208-240 V	<b>018Z7681</b>	<b>018Z7691</b>

Max. ambient temperature +120°F (+50°C)

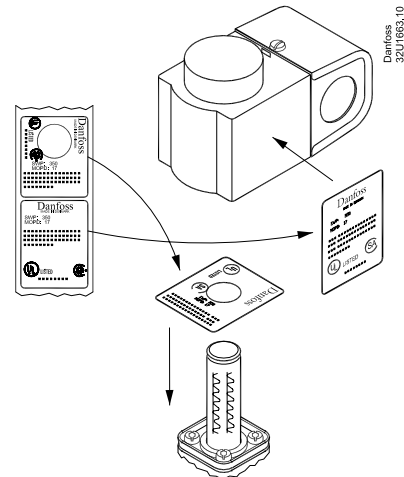
### Mounting



### Media temperature

Temperature	Media
-22°F → 212°F (-30°C → 100°C)	Water / steam
+32°F → 212°F (0°C → 100°C)	Oil / inert gas incl air

### Identification of coil



### Caution!

Wiring and fusing (when used) must comply with prevailing local and national wiring codes and ordinances.

### Transformer selection

Coils 50/60 Hz	Inrush Volt-Amp	Holding Volt-Amp
24 V	49	28
110-120 V	49	28
208-240 V	49	28

### Safe working pressure

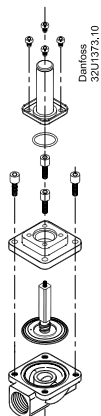
EV250B 10, 12, 18, 22 (NC)	230 Psi	16 bar
----------------------------	---------	--------

### Differential pressure

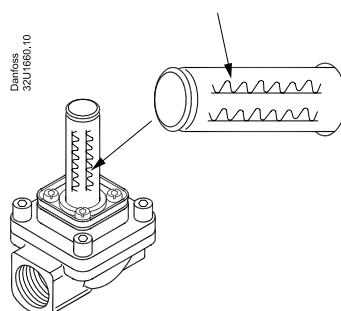
Min.	0 Psi	0 bar
Max.	142 Psi	10 bar

### Spare parts set

Service element (armature including valve plate, spring and diaphragm)



EV250B 10 B N12 /  
F NC ULC /  
032UXXXX / 380 /  
made in XXXXXXX



Valve type	Media	Code no.
EV250B 10, 12	Water/steam	<b>032U5270</b>
	Oil and inert gas incl.air	<b>032U5271</b>
EV250B 18, 22	Water/steam	<b>032U5272</b>
	Oil and inert gas incl.air	<b>032U5273</b>