

Technical leaflet

2/2-way servo operated valve Type EV227B 10-22 for neutral brines

(EVS 10-22)



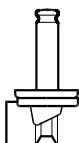
Features


- For neutral brine
- Viscosity: Up to 50 mm²/s (cSt)
- Ambient temperature: 50°C max.
- Coil enclosure: IP 67
- Thread connections: From G³/₈ to G 1
- Stainless steel screws for optimum corrosion resistance
- Constructed with diaphragm in softer material and with stronger armature spring for optimum closing at low Δp.
- Only for use with 018F clip-on coils

Technical data

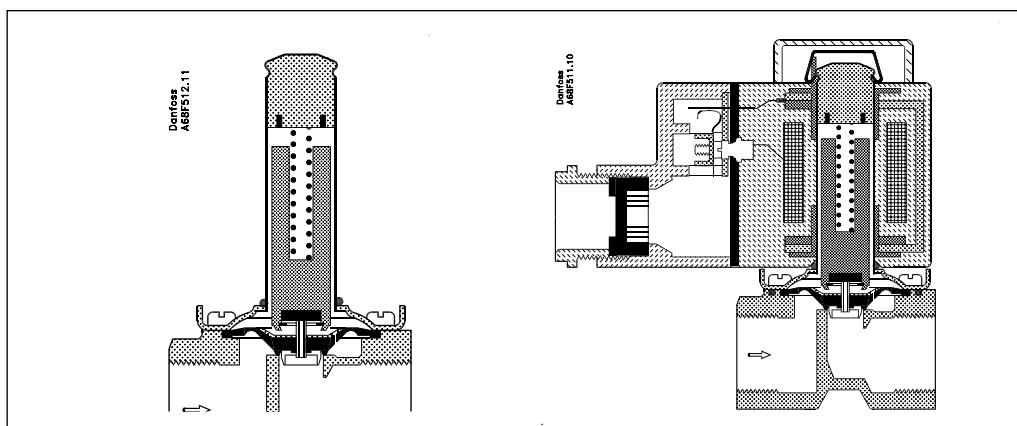
Type	EV227B 10-22
Pressure range	0.1 to 5 bar
Test pressure	max. 16 bar
Ambient temperature	50°C max.
Medium temperature	-35 to +60°C
Viscosity	Max. 50 mm ² /s (cSt)

Coil options

Ordering


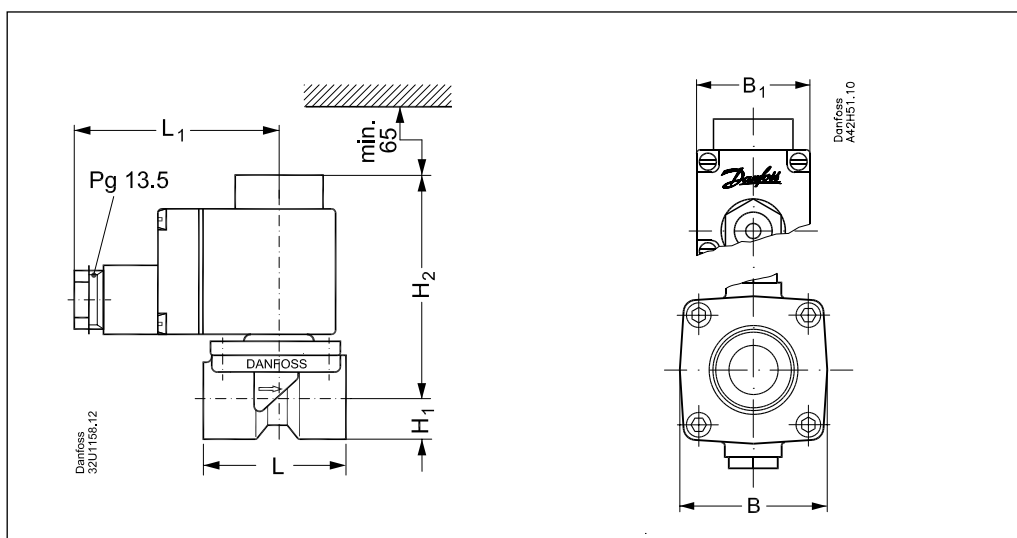
Connection ISO 228/1	k _v -value [m ³ /h]	Permissible diff. pressure		Code number, EV227B	
		min. [bar]	max. [bar]	Valvetype	Code no.
G ³ / ₈	1.5	0.1	5	EV227B 10B G 38E NC000	068F4050
G ¹ / ₂	2.5	0.1	5	EV227B 12B G 12E NC000	068F4052
G ¹ / ₂	3.5	0.1	5	EV227B 14B G 12E NC000	068F4053
G ³ / ₄	5.5	0.1	5	EV227B 18B G 34E NC000	068F4054
G 1	5.5	0.1	5	EV227B 22B G 1E NC000	068F4055

Material specification



		Solenoid valves						Standard	
No.	Description	Type	Material	Analysis	Mat.no.	W.no.	DIN	EN	
1	Valve body	EV227B	Brass	CUZN40Pb2	CW617	2.0402	17672-1	12165	
2	Cover		Stainless steel	X5CrNi18-10		1.4301		10088	
3	Armature tube		Stainless steel	X2CrNi19-11		1.4306		10088	
4	Diaphragm		Rubber	EPDM					
5	Screws		Stainless steel	A2-70				3506	

Dimensions and weights



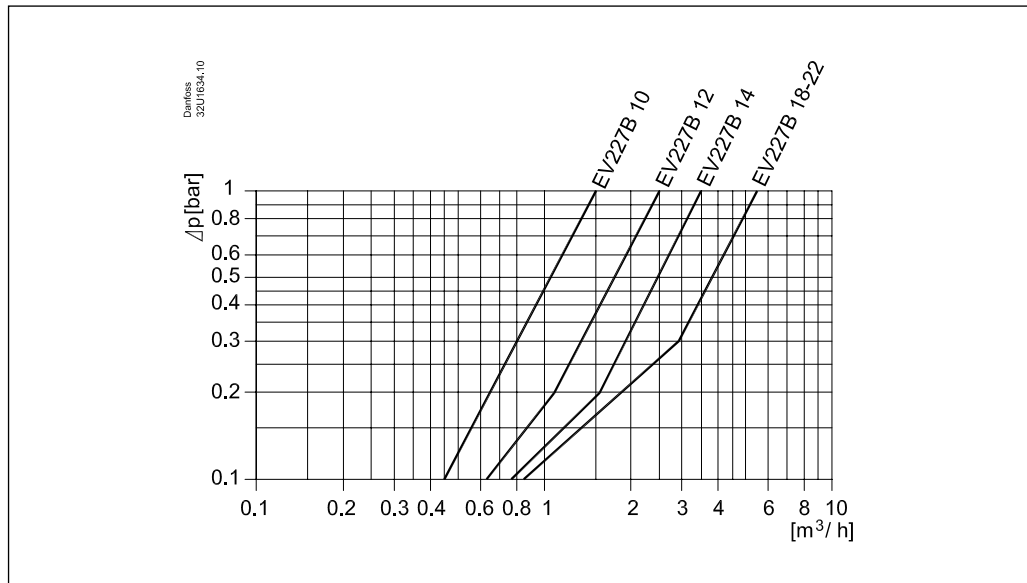
Type	L [mm]	B [mm]	BE		BG		H ₁ [mm]	H ₂ [mm]	Weight without coil [kg]
			10 W a.c. 18 W d.c.		12 W a.c. 20 W d.c.				
			B ₁	L ₁	B ₁	L ₁			
EV227B 10	51.0	48.0	46	72	66	82	13.0	84.0	0.29
EV227B 12	58.0	50.0	46	72	66	82	13.0	84.0	0.35
EV227B 14	80.0	52.0	46	72	66	82	15.0	87.0	0.50
EV227B 18	90.0	56.0	46	72	66	82	18.0	90.0	0.65
EV227B 22	90.0	58.0	46	72	66	82	18.0	98.0	1.00

Spare parts

	Spare part set content	Code no.
EV227B 10	Pos. 5, 14, 16, 45	068F4000
EV227B 12	Pos. 5, 14, 16	068F4001
EV227B 14	Pos. 5, 14, 16	068F4002
EV227B 18 - 22	Pos. 5, 14, 16	068F4003

5 Diaphragm assembly
14 O-ring
16 Armature assembly
45 O-ring

Capacity diagram, water
EV227B 10-22



Indicative capacity correction factors for different viscosities

Viscosity, mm ² /s	10	20	30	40	50
Correction factor	1.10	1.15	1.20	1.30	1.45

Multiply the capacity (m³/h) with the viscosity correction factor of the brine selected for the system. Then use the water capacity diagram

to find the EV227B valve that complies with the corrected capacity