

Contactors CI 61, CI 73, CI 86 CBD-, CBD S-, RCD-

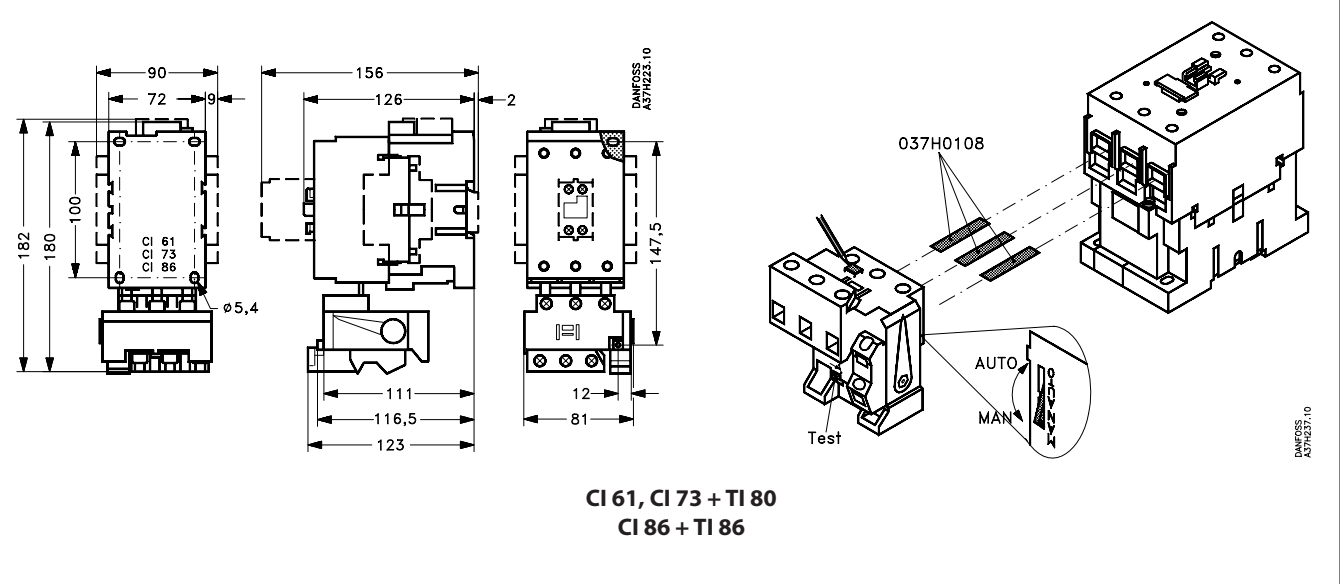
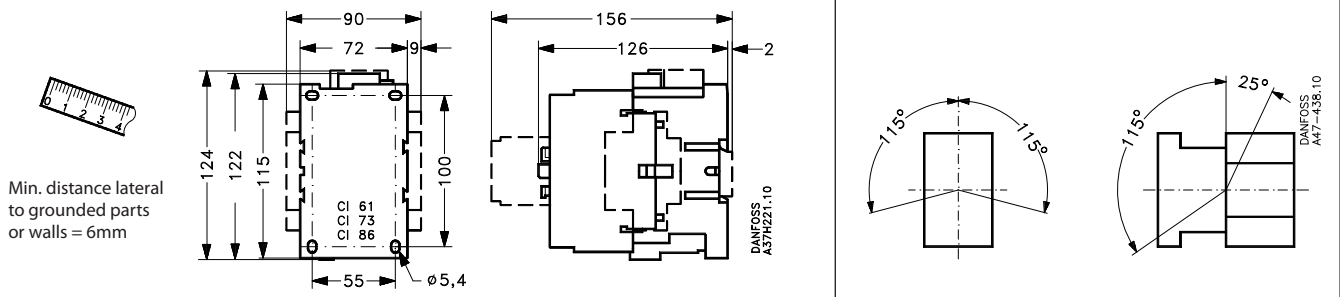
		18mm	1 x 2.5 ... 35mm ² 2 x 2.5 ... 25 mm ² No. 14 ... 2 AWG 75°C Cu wire		3.5 ... 6 Nm 31 ... 52 lb-in
		9mm	1 x 2.5 ... 50 mm ² 2 x 2.5 ... 35 mm ² No 14 ... 2 AWG		4mm
		9mm	1 x 1 ... 2.5 mm ² 2 x 1 ... 2.5 mm ² No. 16 ... 12 AWG 75°C Cu wire		1 ... 1.5 Nm 8.9 ... 13 lb-in
		9mm	1 x 1 ... 4 mm ² 2 x 1 ... 4 mm ² No 16... 12 AWG		No. 3 Pozidrive No. 2

USA/ CND

Suitable for use on a circuit capable of delivering not more than xxx rms symmetrical amperes

IEC 6094-4-1 EN 60947-4-1 U _e ≤ 690 V	gG — max.		max.
	Type 1	Type 2	
CI 61	250 A	160 A	
CI 73	250 A	160 A	
CI 86	250 A	160 A	

Size	Standard Fault Currents		High Available Fault Currents	
	Max. fuse	Max. Circuit breaker	Max. Class J Fuse	Max. Circuit Breaker
	600 V max.		600 V max.	480 V max.
	XXX = 5.000		XXX = 100.000	XXX = 65.000
CI 61	200 A	200 A	80 A	100 A
	XXX = 10.000			
CI 73	250 A	250 A	100 A	100 A
CI 86	300 A	250 A	150 A	100 A



CI 61, CI 73 + TI 80
CI 86 + TI 86

