

NL10K Standard Compressor R600a 220-240V 50Hz

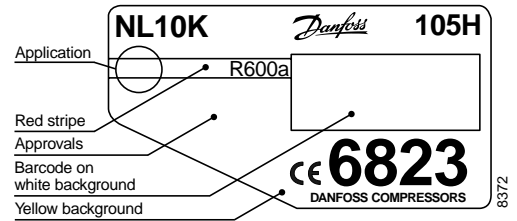
Data Sheet (Replaces CD.53.A1.02)

General

Compressor	NL10K
Code number	105H6823

Application

Application		LBP
Evaporating temperature range	°C	-35 to -10
Voltage range	V/Hz	198 - 254 /50
Motor type		RSIR
Max. ambient temperature	°C	38
Comp. cooling at ambient temp.	32°C	S
	38°C	S



- S = Static cooling normally sufficient
- O = Oil cooling
- F₁ = Fan cooling 1.5 m/s
(compressor compartment temperature equal to ambient temperature)
- F₂ = Fan cooling 3.0 m/s necessary

Design

Displacement	cm ³	10.09
Oil quantity	cm ³	320
Maximum refrigerant charge	g	150
Free gas vol. in compressor	cm ³	2230
Weight without electrical equipment	kg	7.5

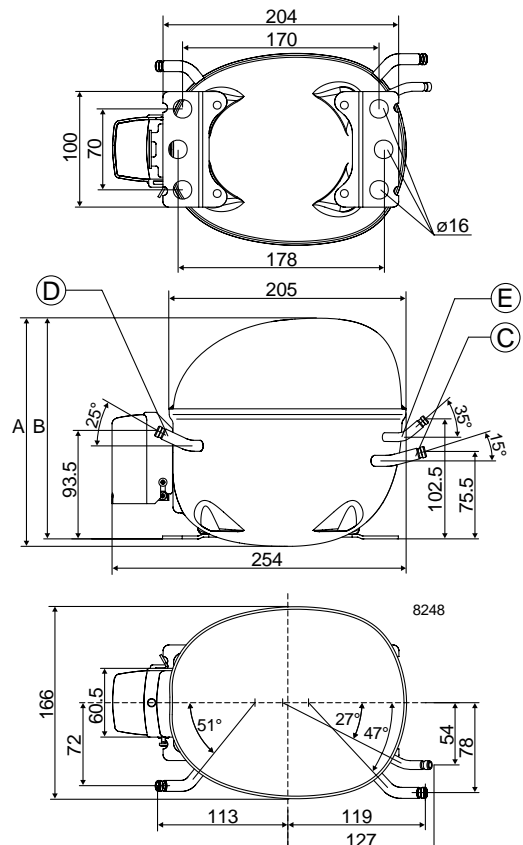


Motor

Motor size	watt	125
LRA (rated after 4 sec. UL984) LST	A	5.0
Cut-in current LST	A	9.6
Resistance, main and start winding (25°C)	Ω	16.0/13.6
Approvals		EN 60335-2-34

Dimensions

Height	mm	A	190
		B	183
Suction connector	location/I.D. mm	C	6.2 ±0.09
Process connector	location/I.D. mm	D	6.2 ±0.09
Discharge connector	location/I.D. mm	E	5.0 +0.12/+0.20
Compressors on a pallet	pcs.		80



Capacity (EN 12900/CECOMAF)

watt

Comp.°C	-35	-30	-25	-23.3	-20	-15	-10
NL10K	66	82	107	117	140	181	231

Capacity (ASHRAE)

watt

Comp.°C	-35	-30	-25	-23.3	-20	-15	-10
NL10K	76	100	130	142	170	221	281

Power consumption

watt

Comp.°C	-35	-30	-25	-23.3	-20	-15	-10
NL10K	89	103	117	122	131	146	161

Current consumption

A

Comp.°C	-35	-30	-25	-23.3	-20	-15	-10
NL10K	0.78	0.80	0.83	0.85	0.88	0.93	0.99

COP (EN 12900/CECOMAF)

W/W

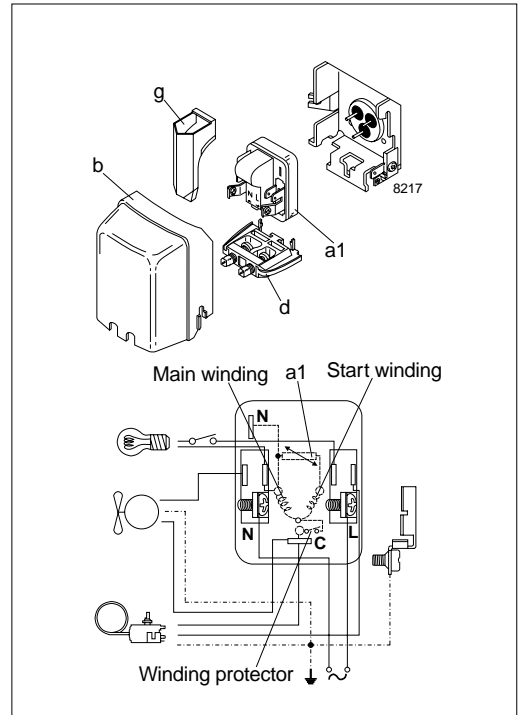
Comp.°C	-35	-30	-25	-23.3	-20	-15	-10
NL10K	0.74	0.80	0.91	0.96	1.07	1.24	1.43

COP (ASHRAE)

W/W

Comp.°C	-35	-30	-25	-23.3	-20	-15	-10
NL10K	0.90	0.97	1.11	1.17	1.30	1.51	1.75

Test conditions
 Condensing temperature 55°C
 Ambient and suction gas temp. 32°C
 Liquid temperature 55°C
 Static cooling, 220V 50Hz,
 PTC consumption incl. EN 12900/CECOMAF ASHRAE



Accessories

Devices	Fig.	NL10K
PTC starting device 6.3 mm spades 4.8 mm spades	a1	103N0011 103N0018
Cover	b	103N2010
Cord relief	d	103N1010
Protection screen for PTC	g	103N0476
Mounting accessories		
Bolt joint for one compressor		118-1917
Bolt joint in quantities		118-1918
Snap-on in quantities		118-1919