

# NL13K Standard Compressor R600a 220-240V 50Hz

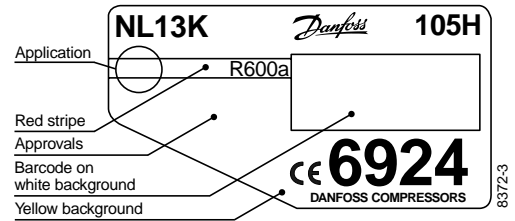
Data Sheet (Replaces CD.53.C1.02)

## General

Compressor	NL13K
Code number	105H6924

## Application

Application	LBP
Evaporating temperature range	°C -35 to -10
Voltage range	V/Hz 198 - 254 /50
Motor type	RSIR
Max. ambient temperature	°C 38
Comp. cooling at ambient temp.	32°C S 38°C S



- S = Static cooling normally sufficient
- O = Oil cooling
- F<sub>1</sub> = Fan cooling 1.5 m/s  
(compressor compartment temperature equal to ambient temperature)
- F<sub>2</sub> = Fan cooling 3.0 m/s necessary

## Design

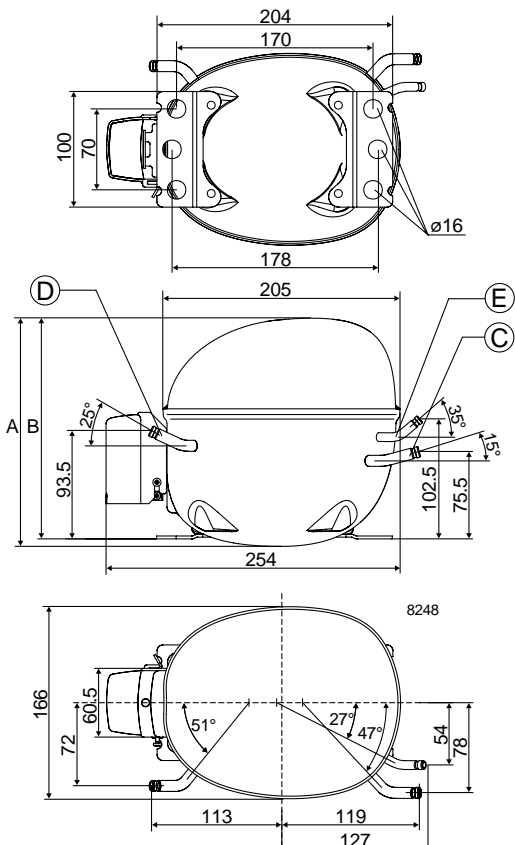
Displacement	cm <sup>3</sup>	13.25
Oil quantity	cm <sup>3</sup>	320
Maximum refrigerant charge	g	150
Free gas vol. in compressor	cm <sup>3</sup>	2270
Weight without electrical equipment	kg	7.5

## Motor

Motor size	watt	185
LRA (rated after 4 sec. UL984) LST	A	6.8
Cut-in current LST	A	11.2
Resistance, main and start winding (25°C)	Ω	11.7/13.7
Approvals		EN 60335-2-34

## Dimensions

Height	mm	A	190
		B	183
Suction connector	location/I.D. mm	C	6.2 ±0.09
Process connector	location/I.D. mm	D	6.2 ±0.09
Discharge connector	location/I.D. mm	E	5.0 +0.12/+0.20
Compressors on a pallet	pcs.		80



**Capacity (EN 12900/CECOMAF)**

**watt**

Comp.°C	-35	-30	-25	-23.3	-20	-15	-10
NL13K	84	109	144	158	188	241	303

**Capacity (ASHRAE)**

**watt**

Comp.°C	-35	-30	-25	-23.3	-20	-15	-10
NL13K	102	133	175	192	229	293	369

**Power consumption**

**watt**

Comp.°C	-35	-30	-25	-23.3	-20	-15	-10
NL13K	121	138	157	164	178	200	224

**Current consumption**

**A**

Comp.°C	-35	-30	-25	-23.3	-20	-15	-10
NL13K	1.09	1.11	1.15	1.17	1.21	1.29	1.40

**COP (EN 12900/CECOMAF)**

**W/W**

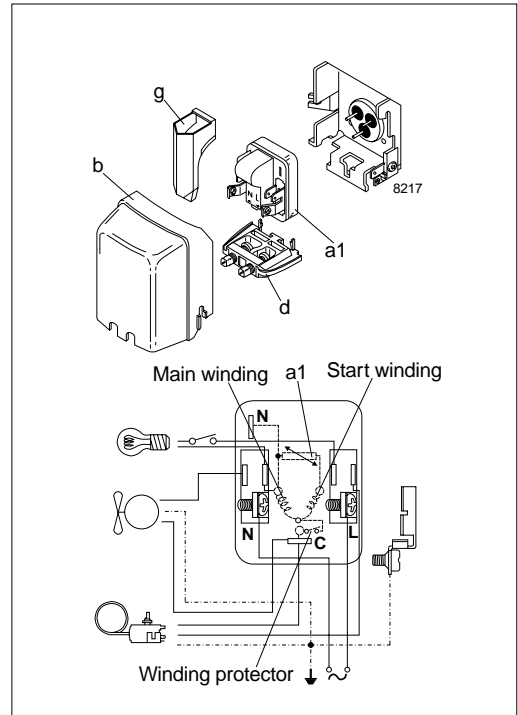
Comp.°C	-35	-30	-25	-23.3	-20	-15	-10
NL13K	0.69	0.79	0.92	0.96	1.06	1.21	1.35

**COP (ASHRAE)**

**W/W**

Comp.°C	-35	-30	-25	-23.3	-20	-15	-10
NL13K	0.84	0.96	1.12	1.17	1.29	1.47	1.65

Test conditions	EN 12900/CECOMAF	ASHRAE
Condensing temperature	55°C	55°C
Ambient and suction gas temp.	32°C	32°C
Liquid temperature	55°C	32°C
Static cooling, 220V 50Hz, PTC consumption incl.		



**Accessories**

Devices	Fig.	NL13K
PTC starting device 6.3 mm spades 4.8 mm spades	a1	103N0011 103N0018
Cover	b	103N2010
Cord relief	d	103N1010
Protection screen for PTC	g	103N0476
Mounting accessories		
Bolt joint for one compressor		118-1917
Bolt joint in quantities		118-1918
Snap-on in quantities		118-1919