

# NLE5.5F

## Energy-optimized Compressor

### R134a

### 115V 60Hz

Data Sheet (Replaces CD.43.B4.22)

#### General

Compressor (CU-plated steel connectors)	<b>NLE5.5F</b>
Codenumber	105G5605

#### Application

Application		LBP
Evaporating temperature range	°F (°C)	-31 to 14 (-35 to -10)
Voltage range	V/Hz	103 - 127 / 60
Motor type		RSCR*
Max. ambient temperature	°F (°C)	110 (43)
Comp. cooling at max. ambient temperature	110°F (43°C)	S

\*run capacitor compulsory

#### Design

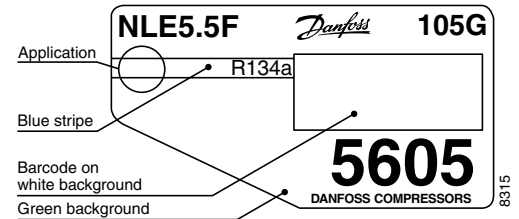
Displacement	cu.in. (cm <sup>3</sup> )	0.37 (6.13)
Oil quantity	fl.oz. (cm <sup>3</sup> )	10.8 (320)
Maximum refrigerant charge	oz. (g)	14.0 (400)
Free gas vol. in compressor housing	fl.oz. (cm <sup>3</sup> )	79.7 (2360)
Weight without electrical equipment	lbs. (kg)	25.0 (11.4)

#### Motor

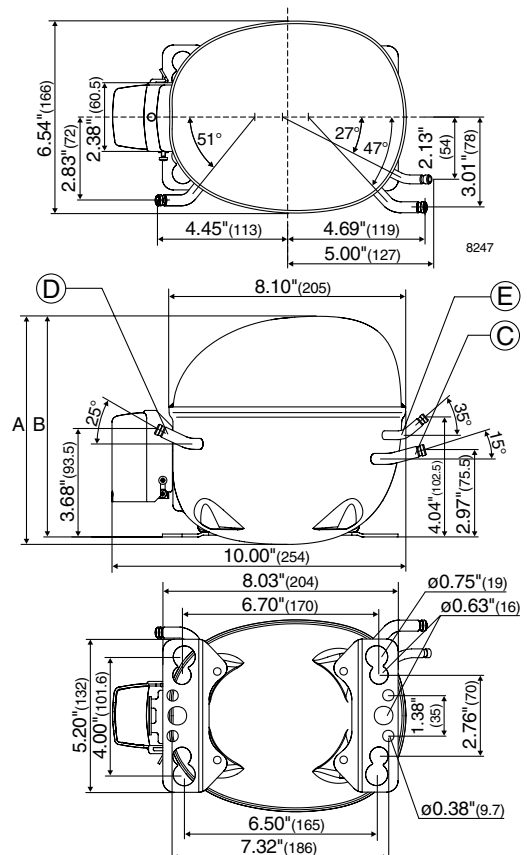
Motor size	watt	150
LRA (rated after 4 sec. UL984) LST	A	11.3
Cut-in current LST	A	21.8
Resistance, main and start winding (77°F)	Ω	3.0/3.7
Approvals		UL984/CSA-C22.2

#### Dimensions

Height	in. (mm)	A	7.76 (198)
		B	7.52 (191)
Suction connector	location/l.D. in. (mm)	C	0.320-0.327 (8.2±0.09)
Process connector	location/l.D. in. (mm)	D	0.252-0.259 (6.5±0.09)
Discharge connector	location/l.D. in. (mm)	E	0.252-0.259 (6.5±0.09)
Compressors on a pallet	pcs.		80



- S = Static cooling normally sufficient
- O = Oil cooling
- F<sub>1</sub> = Fan cooling 1.5 m/s (compressor compartment temp. equal to ambient temperature)
- F<sub>2</sub> = Fan cooling 3.0 m/s necessary



### Capacity (ASHRAE)

Btu/h

Comp.\°F	-30	-20	-13	-10	0	10	14
Comp.\°C	-34.4	-28.9	-25	-23.3	-17.8	-12.2	-10
NLE5.5F	298	458	603	674	936	1251	1388

### Capacity (EN 12900/CECOMAF)

watt

Comp.\°C	-34.4	-28.9	-25	-23.3	-17.8	-12.2	-10
Comp.\°F	-30	-20	-13	-10	0	10	14
NLE5.5F	70	109	143	160	222	297	329

### Power consumption

watt

Comp.\°F	-30	-20	-13	-10	0	10	14
Comp.\°C	-34.4	-28.9	-25	-23.3	-17.8	-12.2	-10
NLE5.5F	86	109	126	134	160	189	200

### Current consumption

A

Comp.\°F	-30	-20	-13	-10	0	10	14
Comp.\°C	-34.4	-28.9	-25	-23.3	-17.8	-12.2	-10
NLE5.5F	0.77	0.96	1.11	1.18	1.41	1.66	1.75

### EER (ASHRAE)

Btu/Wh

Comp.\°F	-30	-20	-13	-10	0	10	14
Comp.\°C	-34.4	-28.9	-25	-23.3	-17.8	-12.2	-10
NLE5.5F	3.46	4.22	4.79	5.04	5.84	6.63	6.93

### COP (EN 12900/CECOMAF)

W/W

Comp.\°C	-34.4	-28.9	-25	-23.3	-17.8	-12.2	-10
Comp.\°F	-30	-20	-13	-10	0	10	14
NLE5.5F	0.82	1.00	1.14	1.20	1.39	1.57	1.64

Test conditions	ASHRAE	EN 12900/CECOMAF
Condensing temperature	130°F (54,4°C)	55°C (131°F)
Ambient and suction gas temp.	90°F (32°C)	32°C (90°F)
Liquid temperature	90°F (32°C)	55°C (131°F)
Static cooling, with RC 15 µF, 115V 60Hz, PTC consumption incl.		

### Accessories

Devices	Fig.	NLE5.5F
PTC starting device 1/4 in. (6.3 mm) spades 3/16 in. (4.8 mm) spades	a1	103N0017 103N0024
Cover	b	103N2011
Cord relief	d	103N1010
Run capacitor 15 µF (compulsory) 1/4 in. (6.3 mm) spades 3/16 in. (4.8 mm) spades	e	117-7118 117-7120
Mounting accessories	Ø in. (mm)	
Bolt joint for one compressor	5/8 (16)	118-1917
Bolt joint in quantities	5/8 (16)	118-1918
Snap-on in quantities	5/8 (16)	118-1919

