

# PL35F Standard Compressor R134a 220-240V 50Hz

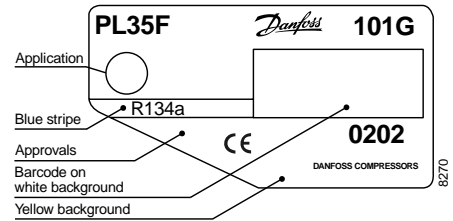
Data Sheet (Replaces CD.41.E3.02)

## General

Compressor	<b>PL35F</b>
Code number	101G0202

## Application

Application		MBP
Evaporating temperature range	°C	-25 to 0
Voltage range	V/Hz	198 - 254 /50
Motor type		RSIR
Max. ambient temperature	°C	38
Comp. cooling at ambient temp.	32°C	S
	38°C	S



- S = Static cooling normally sufficient
- O = Oil cooling
- F<sub>1</sub> = Fan cooling 1.5 m/s  
(compressor compartment temperature equal to ambient temperature)
- F<sub>2</sub> = Fan cooling 3.0 m/s necessary

## Design

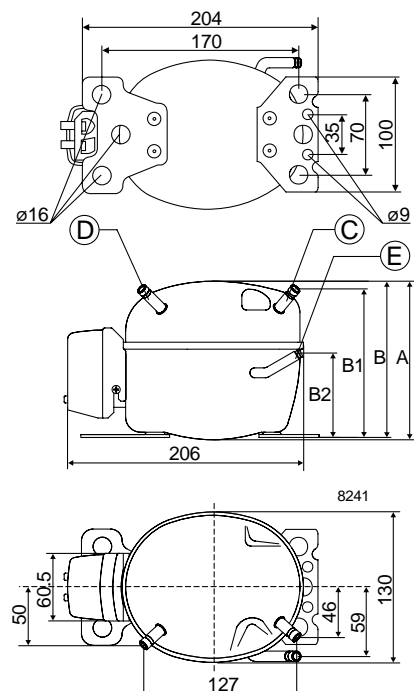
Displacement	cm <sup>3</sup>	2.00
Oil quantity	cm <sup>3</sup>	150
Maximum refrigerant charge	g	300
Free gas vol. in compressor	cm <sup>3</sup>	830
Weight without electrical equipment	kg	4.1

## Motor

Motor size	watt	43
LRA (rated after 4 sec. UL984) LST	A	1.7
Cut-in current LST	A	5.6
Resistance, main and start winding (25°C)	Ω	52.0/19.0
Approvals		EN 60335-2-34 with Annex AA

## Dimensions

Height	mm	A	134
		B	132
		B1	125
		B2	73
Suction connector	location/I.D. mm	C	6.2 ±0.09
Process connector	location/I.D. mm	D	6.2 ±0.09
Discharge connector	location/I.D. mm	E	5.0 +0.12/+0.20
Compressors on a pallet	pcs.		150



### Capacity (EN 12900/CECOMAF)

watt

Comp. °C	-25	-23.3	-20	-15	-10	-5	0
PL35F	32	36	45	60	79	101	125

### Capacity (ASHRAE)

watt

Comp. °C	-25	-23.3	-20	-15	-10	-5	0
PL35F	39	44	55	74	97	124	155

### Power consumption

watt

Comp. °C	-25	-23.3	-20	-15	-10	-5	0
PL35F	50	52	57	64	72	80	88

### Current consumption

A

Comp. °C	-25	-23.3	-20	-15	-10	-5	0
PL35F	0.50	0.50	0.51	0.53	0.55	0.58	0.62

### COP (EN 12900/CECOMAF)

W/W

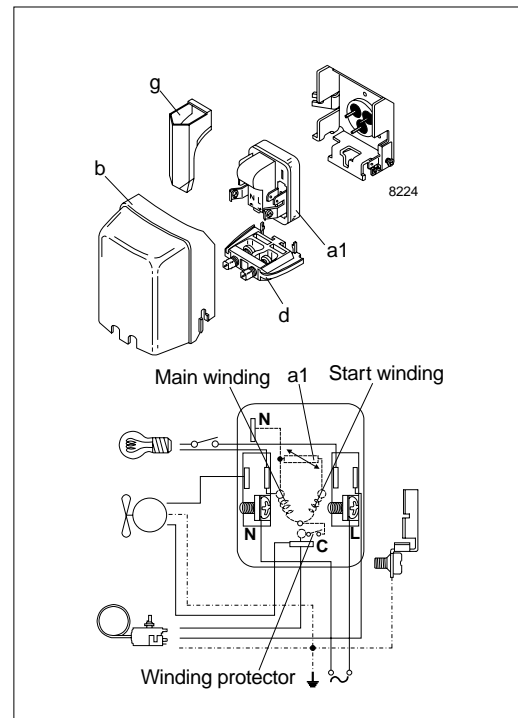
Comp. °C	-25	-23.3	-20	-15	-10	-5	0
PL35F	0.64	0.69	0.79	0.94	1.10	1.26	1.42

### COP (ASHRAE)

W/W

Comp. °C	-25	-23.3	-20	-15	-10	-5	0
PL35F	0.78	0.85	0.97	1.16	1.36	1.55	1.76

Test conditions	EN 12900/CECOMAF	ASHRAE
Condensing temperature	55°C	55°C
Ambient and suction gas temp.	32°C	32°C
Liquid temperature	55°C	32°C
Static cooling, 220V 50Hz, PTC consumption incl.		



### Accessories

Devices	Fig.	PL35F
PTC starting device 6.3 mm spades 4.8 mm spades	a1	103N0011 103N0018
Cover	b	103N0491
Cord relief	d	103N1010
Protection screen for PTC	g	103N0476
Mounting accessories		
Bolt joint for one compressor		118-1917
Bolt joint in quantities		118-1918
Snap-on in quantities		118-1919