

TLES6KK.2

Energy-optimized Compressor

R600a

220-240V 50Hz

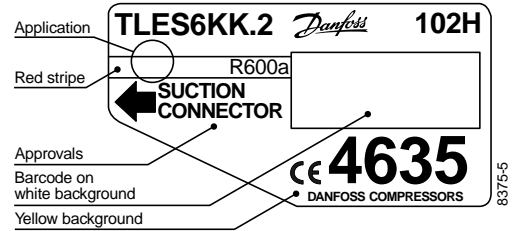
Data Sheet (Replaces CD.52.11.02)

General

Compressor	TLES6KK.2
Code number	102H4635

Application

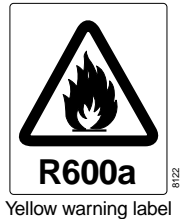
Application		LBP
Evaporating temperature range	°C	-35 to -10
Voltage range	V/Hz	198 - 254 /50
Motor type		RSIR/RSCR
Max. ambient temperature	°C	38
Comp. cooling at ambient temp.	32°C	S
	38°C	S



- S = Static cooling normally sufficient
- O = Oil cooling
- F₁ = Fan cooling 1.5 m/s
(compressor compartment temperature equal to ambient temperature)
- F₂ = Fan cooling 3.0 m/s necessary

Design

Displacement	cm ³	5.70
Oil quantity	cm ³	180
Maximum refrigerant charge	g	150
Free gas vol. in compressor	cm ³	1790
Weight without electrical equipment	kg	7.5

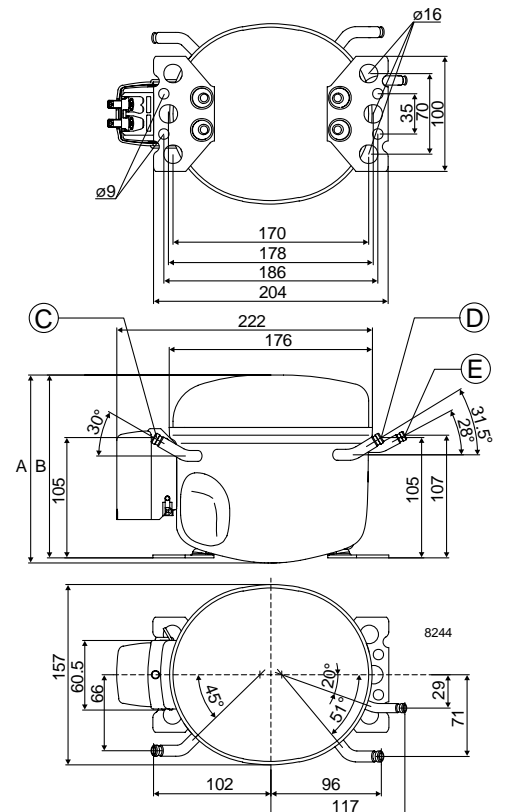


Motor

Motor size	watt	80
LRA (rated after 4 sec. UL984) LST	A	2.9
Cut-in current LST	A	7.6
Resistance, main and start winding (25°C)	Ω	25.7/15.7
Approvals		EN 60335-2-34 with Annex AA

Dimensions

Height	mm	A	173
		B	169
Suction connector	location/I.D. mm	C	6.2 ±0.09
Process connector	location/I.D. mm	D	6.2 ±0.09
Discharge connector	location/I.D. mm	E	5.0 +0.12/+0.20
Compressors on a pallet	pcs.		125



Capacity (EN 12900/CECOMAF)

watt

Comp.°C	-35	-30	-25	-23.3	-20	-15	-10
TLES6KK.2	31	47	66	72	87	111	139

Capacity (ASHRAE)

watt

Comp.°C	-35	-30	-25	-23.3	-20	-15	-10
TLES6KK.2	37	57	80	88	105	135	170

Power consumption

watt

Comp.°C	-35	-30	-25	-23.3	-20	-15	-10
TLES6KK.2	47	56	64	67	73	82	91

Current consumption

A

Comp.°C	-35	-30	-25	-23.3	-20	-15	-10
TLES6KK.2	0.40	0.42	0.45	0.46	0.48	0.51	0.55

COP (EN 12900/CECOMAF)

W/W

Comp.°C	-35	-30	-25	-23.3	-20	-15	-10
TLES6KK.2	0.65	0.85	1.02	1.08	1.19	1.36	1.53

COP (ASHRAE)

W/W

Comp.°C	-35	-30	-25	-23.3	-20	-15	-10
TLES6KK.2	0.80	1.03	1.24	1.31	1.45	1.65	1.87

Test conditions	EN 12900/CECOMAF	ASHRAE
Condensing temperature	55°C	55°C
Ambient and suction gas temp.	32°C	32°C
Liquid temperature	55°C	32°C
Static cooling, 220V 50Hz,		
PTC consumption incl.		

Accessories

Devices	Fig.	TLES6KK.2
PTC starting device 6.3 mm spades	a1	103N0011
4.8 mm spades	(pos.1)	103N0018
PTC starting device 6.3 mm spades	a1	103N0016
4.8 mm spades	(pos.2)	103N0021
Cover	b	103N2010
Cord relief	d	103N1010
Run capacitor 4 µF (optional)	e	117-7117
6.3 mm spades		117-7119
4.8 mm spades		
Protection screen for PTC	g	103N0476
Mounting accessories		
Bolt joint for one compressor		118-1917
Bolt joint in quantities		118-1918
Snap-on in quantities		118-1919

