

# TLES7KK.2

## Energy-optimized Compressor

### R600a

### 220-240V 50Hz

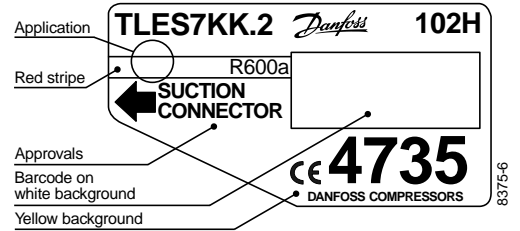
Data Sheet (Replaces CD.52.J1.02)

#### General

Compressor	<b>TLES7KK.2</b>
Code number	102H4735

#### Application

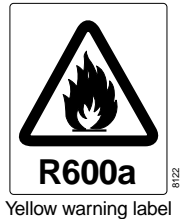
Application	LBP	
Evaporating temperature range	°C	-35 to -10
Voltage range	V/Hz	198 - 254 /50
Motor type	RSIR/RSCR	
Max. ambient temperature	°C	38
Comp. cooling at ambient temp.	32°C	S
	38°C	S



- S = Static cooling normally sufficient
- O = Oil cooling
- F<sub>1</sub> = Fan cooling 1.5 m/s  
(compressor compartment temperature equal to ambient temperature)
- F<sub>2</sub> = Fan cooling 3.0 m/s necessary

#### Design

Displacement	cm <sup>3</sup>	6.49
Oil quantity	cm <sup>3</sup>	180
Maximum refrigerant charge	g	150
Free gas vol. in compressor	cm <sup>3</sup>	1790
Weight without electrical equipment	kg	7.5

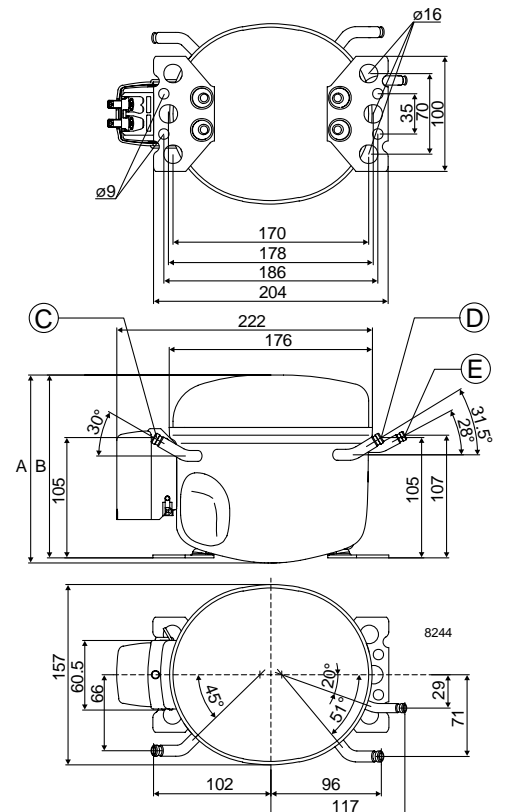


#### Motor

Motor size	watt	105
LRA (rated after 4 sec. UL984) LST	A	4.0
Cut-in current LST	A	8.5
Resistance, main and start winding (25°C)	Ω	18.9/15.3
Approvals	EN 60335-2-34 with Annex AA	

#### Dimensions

Height	mm	A	173
		B	169
Suction connector	location/I.D. mm	C	6.2 ±0.09
Process connector	location/I.D. mm	D	6.2 ±0.09
Discharge connector	location/I.D. mm	E	5.0 +0.12/+0.20
Compressors on a pallet	pcs.	125	



**Capacity (EN 12900/CECOMAF)**

**watt**

Comp. °C	-35	-30	-25	-23.3	-20	-15	-10
TLES7KK.2	40	57	77	85	101	130	163

**Capacity (ASHRAE)**

**watt**

Comp. °C	-35	-30	-25	-23.3	-20	-15	-10
TLES7KK.2	48	69	94	103	123	158	199

**Power consumption**

**watt**

Comp. °C	-35	-30	-25	-23.3	-20	-15	-10
TLES7KK.2	59	66	76	79	86	97	108

**Current consumption**

**A**

Comp. °C	-35	-30	-25	-23.3	-20	-15	-10
TLES7KK.2	0.55	0.57	0.59	0.60	0.62	0.66	0.69

**COP (EN 12900/CECOMAF)**

**W/W**

Comp. °C	-35	-30	-25	-23.3	-20	-15	-10
TLES7KK.2	0.68	0.85	1.02	1.07	1.18	1.34	1.50

**COP (ASHRAE)**

**W/W**

Comp. °C	-35	-30	-25	-23.3	-20	-15	-10
TLES7KK.2	0.83	1.04	1.24	1.31	1.43	1.63	1.83

Test conditions	EN 12900/CECOMAF	ASHRAE
Condensing temperature	55°C	55°C
Ambient and suction gas temp.	32°C	32°C
Liquid temperature	55°C	32°C
Static cooling, 220V 50Hz,		
PTC consumption incl.		

**Accessories**

Devices	Fig.	TLES7KK.2
PTC starting device	6.3 mm spades	a1
	4.8 mm spades	(pos.1) 103N0011 103N0018
PTC starting device	6.3 mm spades	a1
	4.8 mm spades	(pos.2) 103N0016 103N0021
Cover	b	103N2010
Cord relief	d	103N1010

Run capacitor 4 µF (optional)	e	117-7117 117-7119
6.3 mm spades		
4.8 mm spades		
Protection screen for PTC	g	103N0476
Mounting accessories		
Bolt joint for one compressor		118-1917
Bolt joint in quantities		118-1918
Snap-on in quantities		118-1919

