

TLX4KK.3

High Energy-optimized Compressor

R600a

220-240V 50Hz

Data Sheet (Replaces CG.52.K1.02)

General

Compressor	TLX4KK.3
Code number	102H4447

Application

Application	LBP	
Evaporating temperature range	°C	-35 to -10
Voltage range	V/Hz	198 - 254 /50
Motor type	RSCR*	
Max. ambient temperature	°C	43
Comp. cooling at ambient temp.	32°C	S
	38°C	S
	43°C	S

* run capacitor 4 µF compulsory

Design

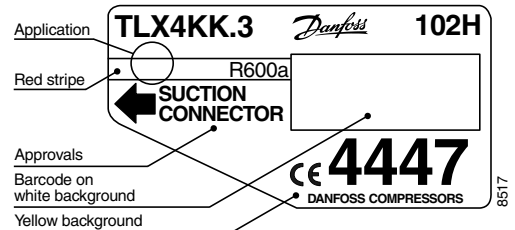
Displacement	cm ³	4.01
Oil quantity	cm ³	180
Maximum refrigerant charge	g	150
Free gas vol. in compressor	cm ³	1790
Weight without electrical equipment	kg	8.2

Motor

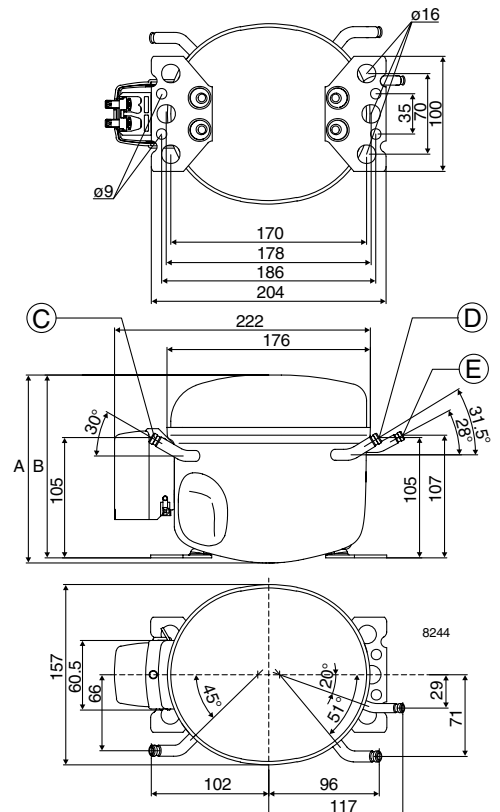
Motor size	watt	35
LRA (rated after 4 sec. UL984) LST	A	1.2
Cut-in current LST	A	5.1
Resistance, main and start winding (25°C)	Ω	61.0/19.0
Approvals	EN 60335-2-34 with Annex AA	

Dimensions

Height	mm	A	173
		B	169
Suction connector	location/I.D. mm	C	6.2 ±0.09
Process connector	location/I.D. mm	D	6.2 ±0.09
Discharge connector	location/I.D. mm	E	5.0 +0.12/+0.20
Compressors on a pallet	pcs.		125



- S = Static cooling normally sufficient
- O = Oil cooling
- F₁ = Fan cooling 1.5 m/s
(compressor compartment temperature equal to ambient temperature)
- F₂ = Fan cooling 3.0 m/s necessary



Capacity (EN 12900/CECOMAF)
watt

Comp.\°C	-35	-30	-25	-23.3	-20	-15	-10
TLX4KK.3	20.5	31.8	44.5	49.2	58.9	75.5	94.7

Capacity (ASHRAE)
watt

Comp.\°C	-35	-30	-25	-23.3	-20	-15	-10
TLX4KK.3	24.9	38.7	54.1	59.8	71.7	92.0	115

Power consumption
watt

Comp.\°C	-35	-30	-25	-23.3	-20	-15	-10
TLX4KK.3	28.6	33.8	38.8	40.5	43.7	48.9	54.4

Current consumption
A

Comp.\°C	-35	-30	-25	-23.3	-20	-15	-10
TLX4KK.3	0.23	0.24	0.25	0.26	0.27	0.28	0.30

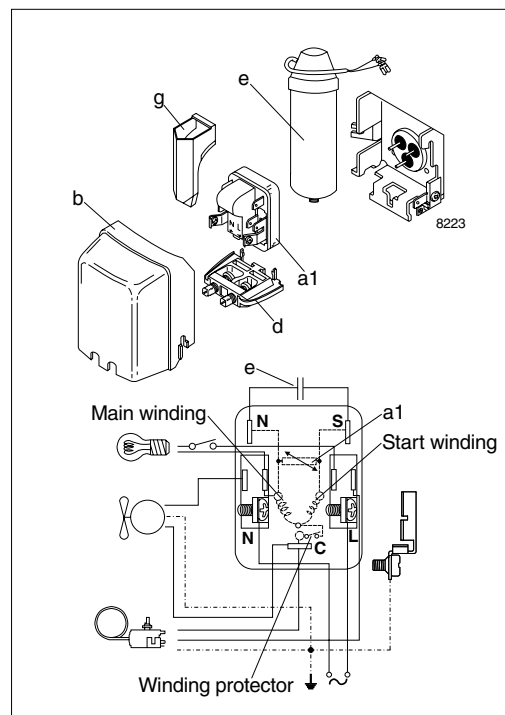
COP (EN 12900/CECOMAF)
W/W

Comp.\°C	-35	-30	-25	-23.3	-20	-15	-10
TLX4KK.3	0.72	0.94	1.15	1.22	1.35	1.55	1.74

COP (ASHRAE)
W/W

Comp.\°C	-35	-30	-25	-23.3	-20	-15	-10
TLX4KK.3	0.87	1.14	1.40	1.48	1.64	1.88	2.12

Test conditions
 Condensing temperature EN 12900/CECOMAF 55°C ASHRAE 55°C
 Ambient and suction gas temp. 32°C 32°C
 Liquid temperature 55°C 32°C
 Static cooling, with RC 4 μF, 220V 50Hz.
 ePTC power consumption included (two watt power consumption to be added, when standard PTC is used; this is also affecting the COP)


Accessories

Devices	Fig.	TLX4KK.3
ePTC starting device 4.8 mm spades	a1	103N0050
PTC starting device 6.3 mm spades		103N0016
4.8 mm spades		103N0021
Cover	b	103N2010
Cord relief	d	103N1010
Run capacitor 4 μF (compulsory)	e	117-7117
6.3 mm spades 4.8 mm spades		117-7119
Protection screen for PTC	g	103N0476
Mounting accessories		
Bolt joint for one compressor		118-1917
Bolt joint in quantities		118-1918
Snap-on in quantities		118-1919