

# TLX4KK

## High Energy-optimized Compressor

### R600a

### 220-240V 50Hz

Data Sheet (Replaces CG.52.D1.02)

#### General

Compressor	TLX4KK
Code number	102H4446

#### Application

Application	LBP
Evaporating temperature range	°C -35 to -10
Voltage range	V/Hz 198 - 254 /50
Motor type	RSCR*
Max. ambient temperature	°C 38
Comp. cooling at ambient temp.	32°C S
	38°C S

\* run capacitor 4 µF compulsory

#### Design

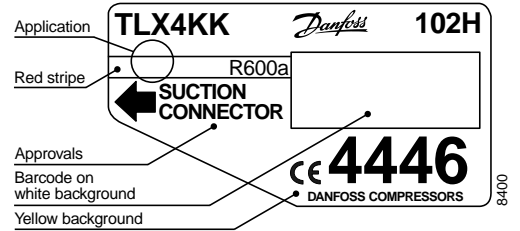
Displacement	cm <sup>3</sup>	3.86
Oil quantity	cm <sup>3</sup>	180
Maximum refrigerant charge	g	150
Free gas vol. in compressor	cm <sup>3</sup>	1790
Weight without electrical equipment	kg	8.2

#### Motor

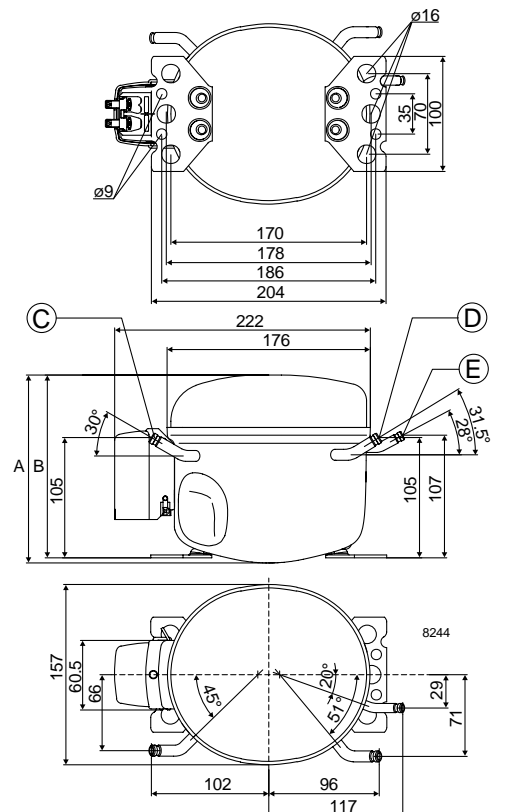
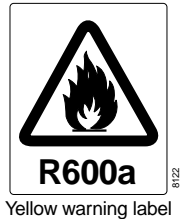
Motor size	watt	35
LRA (rated after 4 sec. UL984) LST	A	1.2
Cut-in current LST	A	5.1
Resistance, main and start winding (25°C)	Ω	61.0/19.0
Approvals	EN 60335-2-34 with Annex AA	

#### Dimensions

Height	mm	A	173
		B	169
Suction connector	location/I.D. mm	C	6.2 ±0.09
Process connector	location/I.D. mm	D	6.2 ±0.09
Discharge connector	location/I.D. mm	E	5.0 +0.12/+0.20
Compressors on a pallet	pcs.		125



- S = Static cooling normally sufficient
- O = Oil cooling
- F<sub>1</sub> = Fan cooling 1.5 m/s  
(compressor compartment temperature equal to ambient temperature)
- F<sub>2</sub> = Fan cooling 3.0 m/s necessary



**Capacity (EN 12900/CECOMAF)**
**watt**

Comp. °C	-35	-30	-25	-23.3	-20	-15	-10
TLX4KK	18.3	28.7	41.0	45.7	55.5	72.6	92.7

**Capacity (ASHRAE)**
**watt**

Comp. °C	-35	-30	-25	-23.3	-20	-15	-10
TLX4KK	22.2	35.0	49.9	55.6	67.6	88.4	113

**Power consumption**
**watt**

Comp. °C	-35	-30	-25	-23.3	-20	-15	-10
TLX4KK	28.3	33.8	39.0	40.8	44.2	49.4	54.7

**Current consumption**
**A**

Comp. °C	-35	-30	-25	-23.3	-20	-15	-10
TLX4KK	0.22	0.24	0.25	0.25	0.26	0.28	0.30

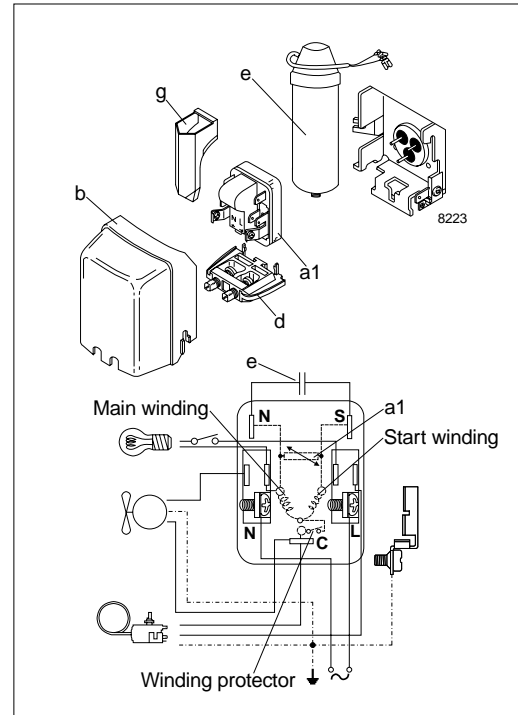
**COP (EN 12900/CECOMAF)**
**W/W**

Comp. °C	-35	-30	-25	-23.3	-20	-15	-10
TLX4KK	0.64	0.85	1.05	1.12	1.26	1.47	1.69

**COP (ASHRAE)**
**W/W**

Comp. °C	-35	-30	-25	-23.3	-20	-15	-10
TLX4KK	0.78	1.03	1.28	1.36	1.53	1.79	2.06

Test conditions	EN 12900/CECOMAF	ASHRAE
Condensing temperature	55°C	55°C
Ambient and suction gas temp.	32°C	32°C
Liquid temperature	55°C	32°C
Static cooling, with RC 4 µF, 220V 50Hz, PTC consumption incl.		


**Accessories**

Devices	Fig.	TLX4KK
PTC starting device 6.3 mm spades 4.8 mm spades	a1	103N0016 103N0021
Cover	b	103N2010
Cord relief	d	103N1010
Run capacitor 4 µF (compulsory) 6.3 mm spades 4.8 mm spades	e	117-7117 117-7119
Protection screen for PTC	g	103N0476
Mounting accessories Bolt joint for one compressor Bolt joint in quantities Snap-on in quantities		118-1917 118-1918 118-1919