

# TLX6.5KK.3

## High Energy-optimized Compressor

### R600a

### 220-240V 50Hz

Data Sheet (Replaces CG.52.M1.02)

#### General

Compressor	<b>TLX6.5KK.3</b>
Code number	102H4747

#### Application

Application		LBP
Evaporating temperature range	°C	-35 to -10
Voltage range	V/Hz	198 - 254 /50
Motor type		RSCR*
Max. ambient temperature	°C	43
Comp. cooling at ambient temp.	32°C	S
	38°C	S
	43°C	S

\* run capacitor 4 µF compulsory

#### Design

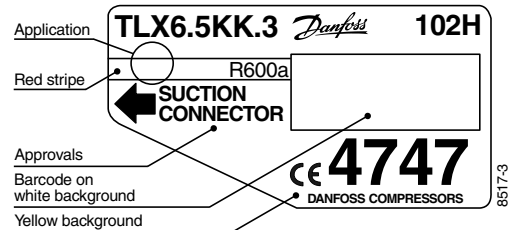
Displacement	cm <sup>3</sup>	6.49
Oil quantity	cm <sup>3</sup>	180
Maximum refrigerant charge	g	150
Free gas vol. in compressor	cm <sup>3</sup>	1790
Weight without electrical equipment	kg	8.3

#### Motor

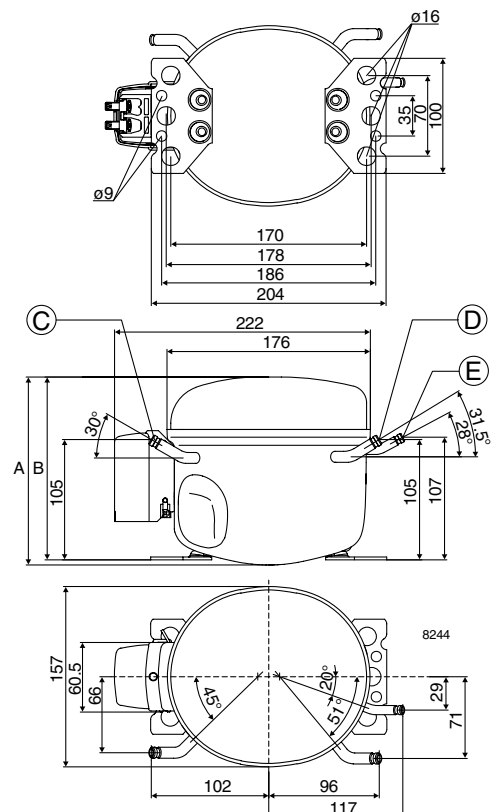
Motor size	watt	65
LRA (rated after 4 sec. UL984) LST	A	2.3
Cut-in current LST	A	6.6
Resistance, main and start winding (25°C)	Ω	30.0/15.0
Approvals		EN 60335-2-34 with Annex AA

#### Dimensions

Height	mm	A	173
		B	169
Suction connector	location/I.D. mm	C	6.2 ±0.09
Process connector	location/I.D. mm	D	6.2 ±0.09
Discharge connector	location/I.D. mm	E	5.0 +0.12/+0.20
Compressors on a pallet	pcs.		125



- S = Static cooling normally sufficient
- O = Oil cooling
- F<sub>1</sub> = Fan cooling 1.5 m/s  
(compressor compartment temperature equal to ambient temperature)
- F<sub>2</sub> = Fan cooling 3.0 m/s necessary



**Capacity (EN 12900/CECOMAF)**
**watt**

Comp.\°C	-35	-30	-25	-23.3	-20	-15	-10
TLX6.5KK.3	46.3	63.2	83.0	90.5	106	133	165

**Capacity (ASHRAE)**
**watt**

Comp.\°C	-35	-30	-25	-23.3	-20	-15	-10
TLX6.5KK.3	56.3	76.9	101	110	129	162	201

**Power consumption**
**watt**

Comp.\°C	-35	-30	-25	-23.3	-20	-15	-10
TLX6.5KK.3	47.8	56.0	64.0	66.7	72.1	80.8	90.4

**Current consumption**
**A**

Comp.\°C	-35	-30	-25	-23.3	-20	-15	-10
TLX6.5KK.3	0.24	0.27	0.30	0.31	0.34	0.38	0.42

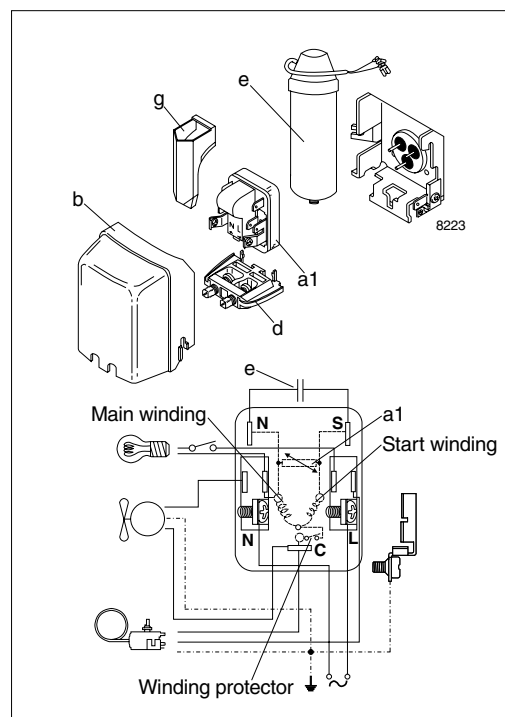
**COP (EN 12900/CECOMAF)**
**W/W**

Comp.\°C	-35	-30	-25	-23.3	-20	-15	-10
TLX6.5KK.3	0.97	1.13	1.30	1.36	1.47	1.65	1.83

**COP (ASHRAE)**
**W/W**

Comp.\°C	-35	-30	-25	-23.3	-20	-15	-10
TLX6.5KK.3	1.18	1.37	1.58	1.65	1.79	2.01	2.23

Test conditions EN 12900/CECOMAF ASHRAE  
 Condensing temperature 55°C 55°C  
 Ambient and suction gas temp. 32°C 32°C  
 Liquid temperature 55°C 32°C  
 Static cooling, with RC 4 µF, 220V 50Hz.  
 ePTC power consumption included (two watt power consumption to be added, when standard PTC is used; this is also affecting the COP)


**Accessories**

Devices	Fig.	TLX6.5KK.3
ePTC starting device 4.8 mm spades	a1	103N0050
PTC starting device 6.3 mm spades		103N0016
4.8 mm spades		103N0021
Cover	b	103N2010
Cord relief	d	103N1010
Run capacitor 4 µF (compulsory)	e	117-7117
6.3 mm spades		117-7119
4.8 mm spades		
Protection screen for PTC	g	103N0476
Mounting accessories		
Bolt joint for one compressor		118-1917
Bolt joint in quantities		118-1918
Snap-on in quantities		118-1919