

Capacity (EN 12900/CECOMAF)
watt

Comp.\°C	-35	-30	-25	-23.3	-20	-15	-10
TLX7.5KK.3	54.7	74.7	98.0	107	125	157	195

Capacity (ASHRAE)
watt

Comp.\°C	-35	-30	-25	-23.3	-20	-15	-10
TLX7.5KK.3	66.5	90.8	119	130	153	192	238

Power consumption
watt

Comp.\°C	-35	-30	-25	-23.3	-20	-15	-10
TLX7.5KK.3	55.6	65.1	74.4	77.6	83.8	93.9	105

Current consumption
A

Comp.\°C	-35	-30	-25	-23.3	-20	-15	-10
TLX7.5KK.3	0.26	0.30	0.34	0.35	0.38	0.42	0.47

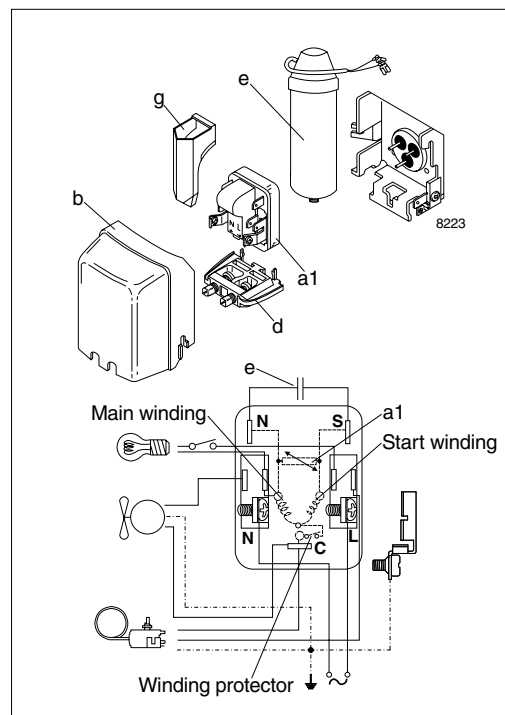
COP (EN 12900/CECOMAF)
W/W

Comp.\°C	-35	-30	-25	-23.3	-20	-15	-10
TLX7.5KK.3	0.98	1.15	1.32	1.38	1.50	1.68	1.86

COP (ASHRAE)
W/W

Comp.\°C	-35	-30	-25	-23.3	-20	-15	-10
TLX7.5KK.3	1.20	1.39	1.60	1.68	1.82	2.04	2.26

Test conditions
 Condensing temperature EN 12900/CECOMAF 55°C ASHRAE 55°C
 Ambient and suction gas temp. 32°C 32°C
 Liquid temperature 55°C 32°C
 Static cooling, with RC 3 µF, 220V 50Hz,
 ePTC consumption incl.
 preliminary data


Accessories

Devices	Fig.	TLX7.5KK.3
PTC starting device 6.3 mm spades 4.8 mm spades	a1	103N0016
		103N0021
ePTC starting device 4.8 mm spades		103N0050
Cover	b	103N2010
Cord relief	d	103N1010
Run capacitor 3 µF (compulsory) 6.3 mm spades 4.8 mm spades	e	117-7131
		117-7132
Protection screen for PTC	g	103N0476
Mounting accessories		
Bolt joint for one compressor		118-1917
Bolt joint in quantities		118-1918
Snap-on in quantities		118-1919