

PL35F Standard Compressor R134a 220-240V 50Hz

General

Code number	101G0203
Approvals	EN 60335-2-34 with Annex AA
Compressors on pallet	150

Application

Application	MBP		
Frequency	Hz	50	60
Evaporating temperature	°C	-25 to 0	-
Voltage range	V	198 - 254	-
Max. condensing temperature continuous (short)	°C	60 (70)	-
Max. winding temperature continuous (short)	°C	125 (135)	-

Cooling requirements

Frequency	Hz	50			60		
Application		LBP	MBP	HBP	LBP	MBP	HBP
32°C		-	S	-	-	-	-
38°C		-	S	-	-	-	-
43°C		-	-	-	-	-	-
Remarks on application:							

Motor

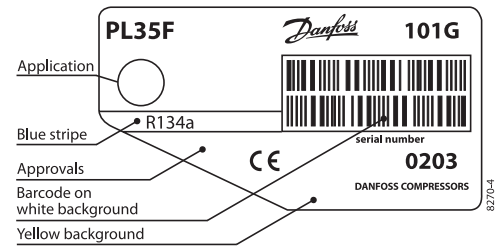
Motor type	RSIR		
LRA (rated after 4 sec. UL984), HST LST	A	-	1.7
Cut in Current, HST LST	A	-	5.6
Resistance, main start winding (25°C)	Ω	52.0	19.0

Design

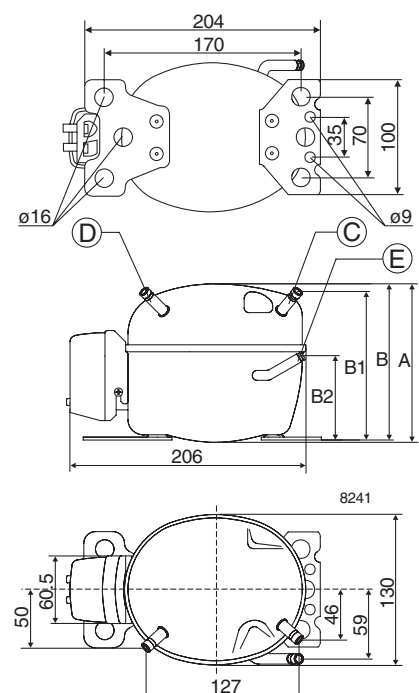
Displacement	cm ³	2.00
Oil quantity (type)	cm ³	150 (polyolester)
Maximum refrigerant charge	g	300
Free gas volume in compressor	cm ³	830
Weight without electrical equipment	kg	4.1

Dimensions

Height		
	A	134
	B	132
	B1	125
	B2	73
Suction connector	location/I.D. mm angle	C 6.5 41.5°
	material comment	Cu-plated steel Al caps
Process connector	location/I.D. mm angle	D 6.5 45°
	material comment	Cu-plated steel Al caps
Discharge connector	location/I.D. mm angle	E 5.0 21°
	material comment	Cu-plated steel Al caps
Oil cooler connector	location/I.D. mm angle	F -
	material comment	-
Connector tolerance	I.D. mm	±0.09, on 5.0 +0.12/+0.20
Remarks:		



- S = Static cooling normally sufficient
- O = Oil cooling
- F₁ = Fan cooling 1.5 m/s
(compressor compartment temperature equal to ambient temperature)
- F₂ = Fan cooling 3.0 m/s necessary
- SG = Suction gas cooling normally sufficient
- = not applicable in this area

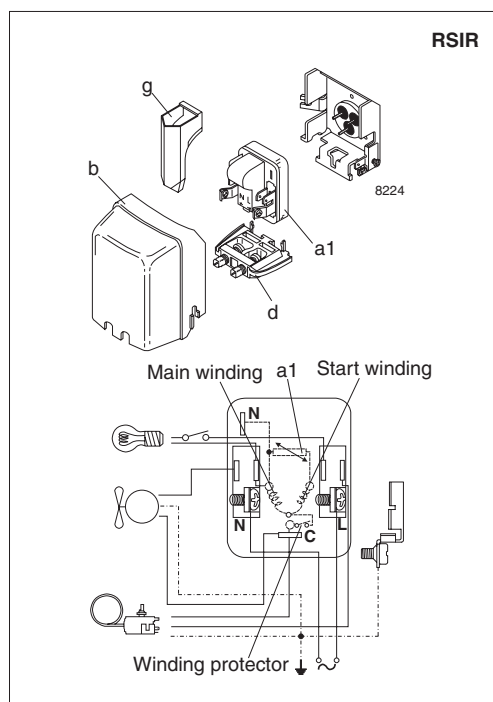


EN 12900 Household (CECOMAF) 220V, 50Hz, 2 W PTC consumption incl., static cooling

Evap. temp. in °C	-45	-40	-35	-30	-25	-23.3	-20	-15	-10	-6.7	-5	0	5	7.2	10	15	20
Capacity in W					31.9	36.0	44.6	60.3	78.9	93.0	101	125					
Power cons. in W					50.1	52.0	56.7	64.0	71.7	77.0	79.9	88.1					
Current cons. in A					0.50	0.50	0.51	0.53	0.55	0.57	0.58	0.62					
COP in W/W					0.64	0.69	0.79	0.94	1.10	1.20	1.25	1.42					

ASHRAE 220V, 50Hz, 2 W PTC consumption incl., static cooling

Evap. temp. in °C	-45	-40	-35	-30	-25	-23.3	-20	-15	-10	-6.7	-5	0	5	7.2	10	15	20
Capacity in W					39.8	45.0	55.6	75.0	98.2	116	125	156					
Power cons. in W					50.0	52.0	56.6	63.8	71.5	77.0	79.5	87.7					
Current cons. in A					0.50	0.50	0.51	0.53	0.55	0.57	0.58	0.62					
COP in W/W					0.80	0.86	0.98	1.18	1.37	1.51	1.57	1.78					



Accessories for	PL35F	Figure	Code number
PTC starting device	6.3 mm spade connectors	a1	103N0011
	4.8 mm spade connectors		103N0018
Cover		b	103N0491
Cord relief		d	103N1010
Protection screen for PTC		g	103N0476

Test conditions	EN 12900/CECOMAF	ASHRAE
Condensing temperature	55°C	54.4°C
Ambient temperature	32°C	32°C
Suction gas temperature	32°C	32°C
Liquid temperature	no subcooling	32°C

Mounting accessories		Code number
Bolt joint for one compressor	Ø: 16 mm	118-1917
Bolt joint in quantities	Ø: 16 mm	118-1918
Snap-on in quantities	Ø: 16 mm	118-1919

Danfoss can accept no responsibility for possible errors in catalogues, brochures and other printed material. Danfoss reserves the right to alter its products without notice. This also applies to products already on order provided that such alterations can be made without subsequential changes being necessary in specifications already agreed. All trademarks in this material are property of the respective companies. Danfoss and the Danfoss logotype are trademarks of Danfoss A/S. All rights reserved.