

SLV12MLK Variable Speed Drive Compressor R404A/R507 220-240V 50/60Hz

- with 105N46xx Series Controllers



General

Code number (without electronic unit)	104L2604
Electronic unit	105N4630
Approvals	GB4706.1, GB4706.17
Compressors on pallet	80

Application

Application		MBP	
Frequency	Hz	50	60
Evaporating temperature	2,000 - 3,000 rpm	°C	-25 to 7.2
	4,000 rpm		-25 to 0
Voltage range	V	180 - 254	180 - 254
Max. condensing temp. continuous (short)	2,000 - 3,000 rpm	°C	50 (60)
	4,000 rpm		50 (55)
Max. winding temperature continuous (short)	°C	125 (135)	125 (135)

Cooling requirements

Frequency	Hz	50			60		
Application		LBP	MBP	HBP	LBP	MBP	HBP
32°C		-	F ₂	-	-	F ₂	-
38°C		-	F ₂	-	-	F ₂	-
43°C		-	-	-	-	-	-

Remarks on application: LST only, airflow on compressor and electronic unit: 3m/s.

Features

Speed range	rpm	2000 - 4000
Thermostat		- integrated - electronic
Protections		- current - speed - temperature
Remarks:		

Motor

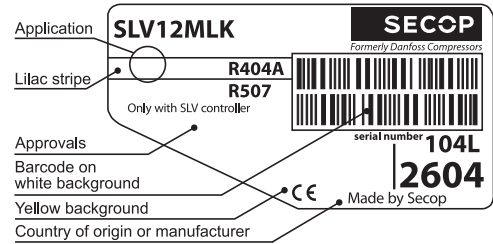
Motor type		permanent magnet
LRA (rated after 4 sec. UL984),	A	electronic cut off
Maximum current	A	5.2
Resistance, all 3 windings (25°C)	Ω	7.7

Design

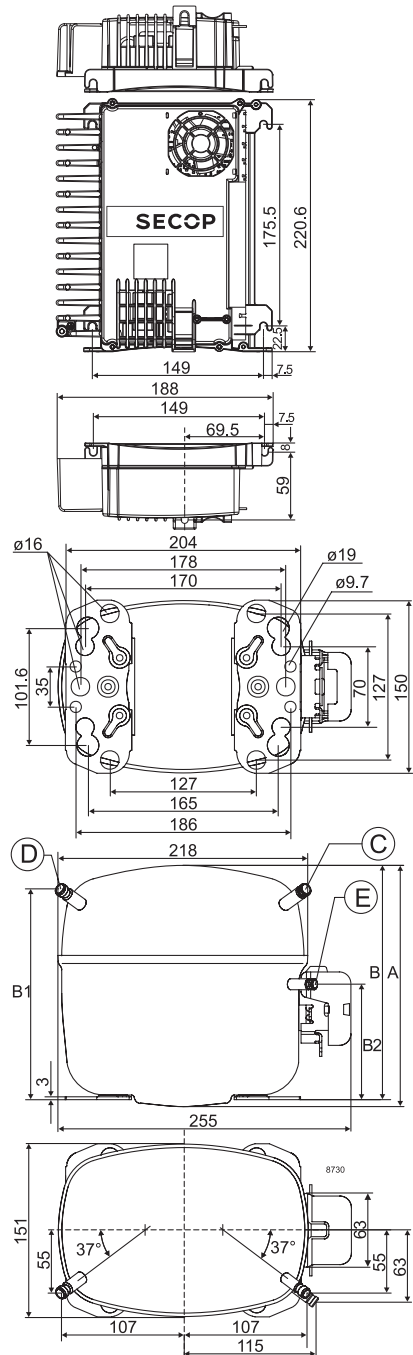
Displacement	cm ³	12.87
Oil quantity (type)	cm ³	600 (polyolester)
Maximum refrigerant charge	g	1300
Free gas volume in compressor	cm ³	1510
Weight - Compressor/Electronic unit	kg	12.0/1.4

Dimensions

Height	mm	A	199
		B	193
		B1	173
		B2	90
Suction connector	location/I.D. mm angle	C	10.2 37°
	material comment		Cu-plated steel Al cap
Process connector	location/I.D. mm angle	D	6.2 37°
	material comment		Cu-plated steel Al cap
Discharge connector	location/I.D. mm angle	E	6.2 37°
	material comment		Cu-plated steel Al cap
Connector tolerance	I.D. mm		±0.09



- S = Static cooling normally sufficient
- O = Oil cooling
- F₁ = Fan cooling 1.5 m/s
(compressor compartment temperature equal to ambient temperature)
- F₂ = Fan cooling 3.0 m/s necessary
- SG = Suction gas cooling normally sufficient
- = not applicable in this area



2,000 rpm EN 12900 Household (CECOMAF)* 220V, 50Hz, fan cooling F₂

Evap. temp. in °C	-45	-40	-35	-30	-25	-23.3	-20	-15	-10	-6.7	-5	0	5	7.2	10	15	20
Capacity in W					331	368	446	579	733	847	910	1113	1343	1454			
Power cons. in W					301	320	354	400	438	461	472	502	529	541			
Current cons. in A					1.51	1.58	1.70	1.89	2.06	2.17	2.23	2.39	2.54	2.60			
COP in W/W					1.10	1.15	1.26	1.45	1.67	1.84	1.93	2.22	2.54	2.69			

2,500 rpm EN 12900 Household (CECOMAF)* 220V, 50Hz, fan cooling F₂

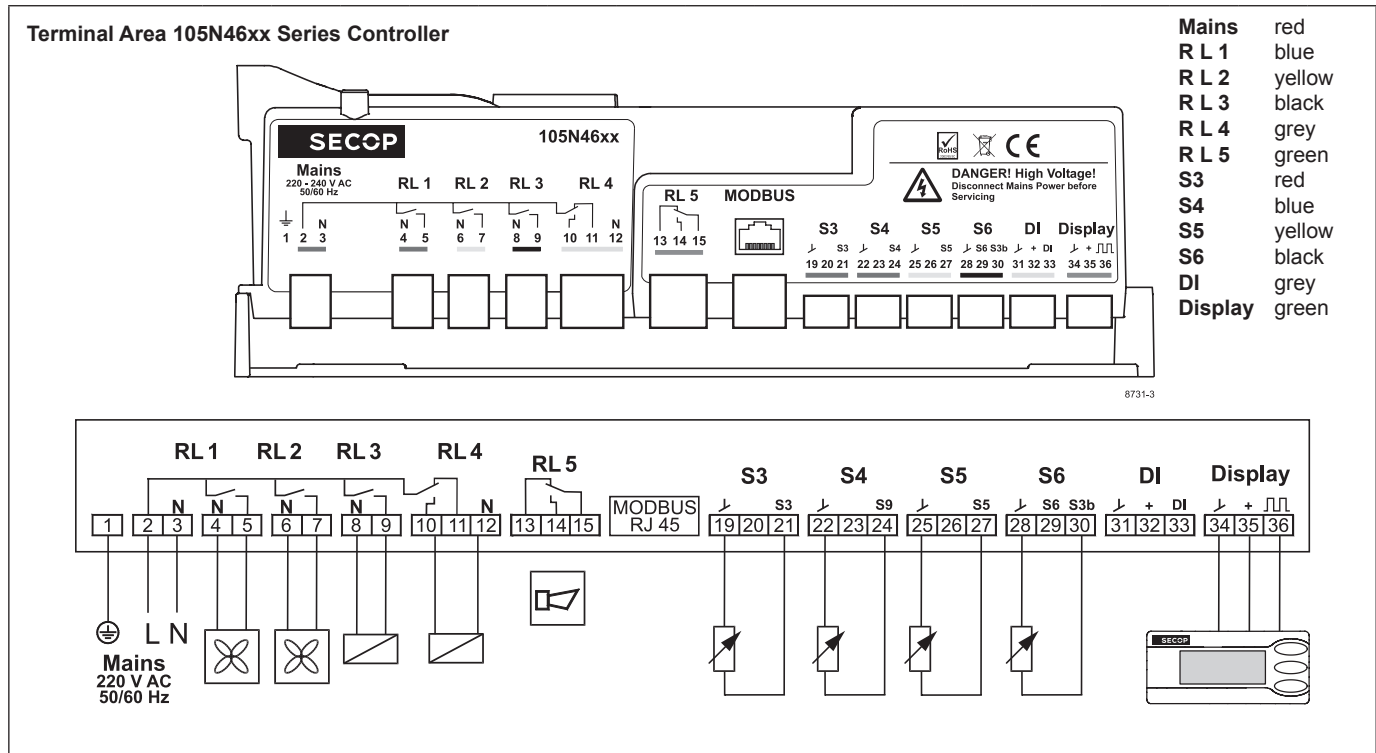
Evap. temp. in °C	-45	-40	-35	-30	-25	-23.3	-20	-15	-10	-6.7	-5	0	5	7.2	10	15	20
Capacity in W					415	461	558	724	915	1057	1135	1387	1673	1811			
Power cons. in W					373	395	435	490	539	570	585	630	674	694			
Current cons. in A					1.88	1.95	2.11	2.34	2.57	2.73	2.80	3.04	3.28	3.38			
COP in W/W					1.11	1.17	1.28	1.48	1.70	1.85	1.94	2.20	2.48	2.61			

3,000 rpm EN 12900 Household (CECOMAF)* 220V, 50Hz, fan cooling F₂

Evap. temp. in °C	-45	-40	-35	-30	-25	-23.3	-20	-15	-10	-6.7	-5	0	5	7.2	10	15	20
Capacity in W					499	555	670	868	1097	1267	1360	1661	2004	2169			
Power cons. in W					442	467	513	576	636	674	694	752	814	843			
Current cons. in A					2.17	2.26	2.43	2.70	2.99	3.18	3.28	3.58	3.90	4.04			
COP in W/W					1.13	1.19	1.31	1.51	1.73	1.88	1.96	2.21	2.46	2.57			

4,000 rpm EN 12900 Household (CECOMAF)* 220V, 50Hz, fan cooling F₂

Evap. temp. in °C	-45	-40	-35	-30	-25	-23.3	-20	-15	-10	-6.7	-5	0	5	7.2	10	15	20
Capacity in W					679	746	886	1127	1404	1610	1723	2088					
Power cons. in W					578	612	675	763	845	895	920	990					
Current cons. in A					2.87	2.96	3.16	3.51	3.93	4.24	4.41	4.96					
COP in W/W					1.17	1.22	1.31	1.48	1.66	1.80	1.87	2.11					



Accessories for	SLV12MLK	Code number
Cover		103N2009
Cord relief		103N1004

Mounting accessories		Code number
Bolt joint for one compressor	Ø: 16 mm	118-1917
Bolt joint in quantities	Ø: 16 mm	118-1918
Snap-on in quantities	Ø: 16 mm	118-1919

Test conditions	EN 12900/CECOMAF*
Condensing temperature	45°C
Ambient temperature	32°C
Suction gas temperature	32°C
Liquid temperature	no subcooling

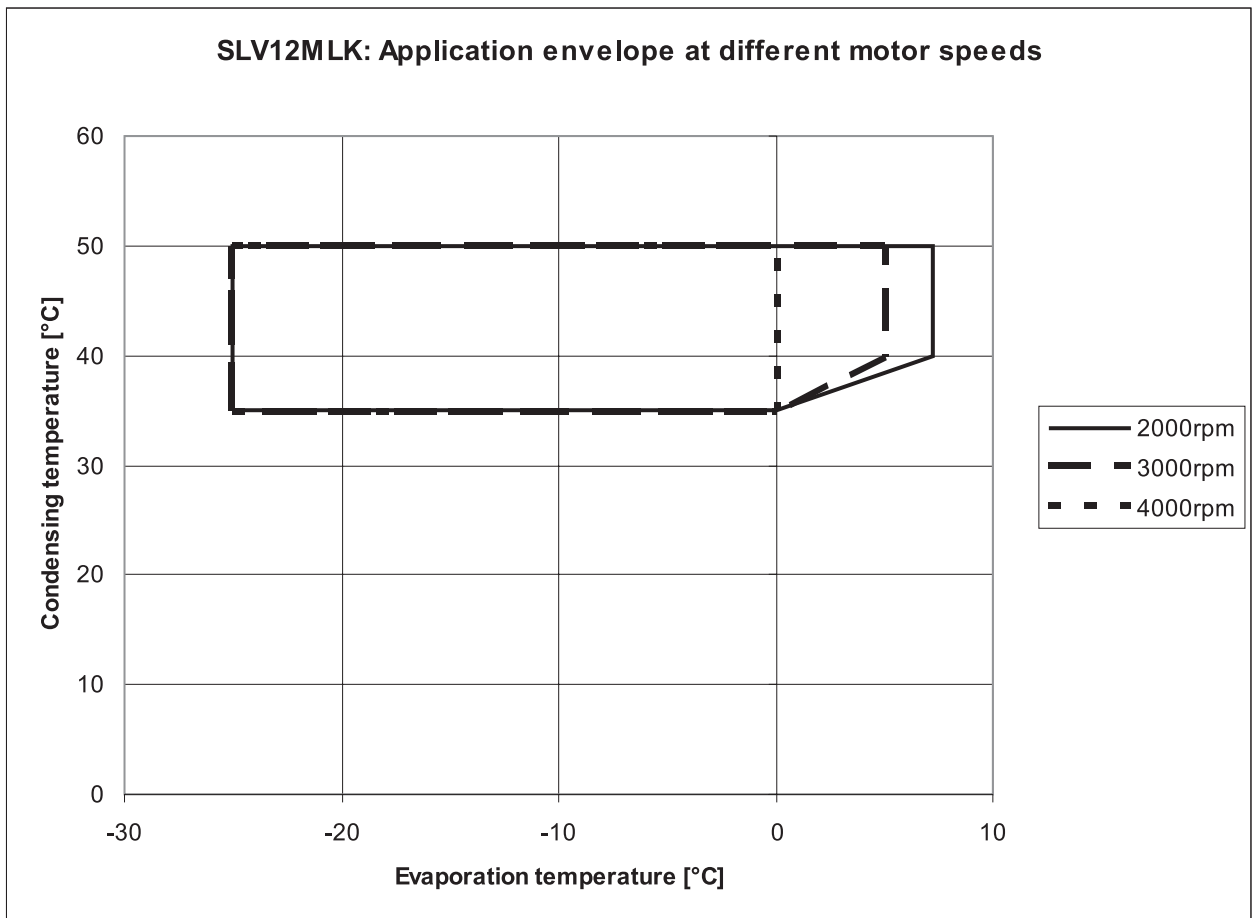
SLV12MLK

Variable Speed Drive Compressor

R404A/R507

220-240V 50/60Hz

Application Envelope



Secop assumes no responsibility for possible errors or omissions in the data and does not warrant the accuracy of the data. The user is responsible for the correct use of the data. Secop is not liable for any damage or loss resulting from the use of the data. All trademarks in this material are property of the respective companies. Secop is a trademark of Secop Danfoss A/S. All rights reserved. www.secop.com