

Time Delay Relay for SC-Twin

SD 117N0001, 220-240V, 50 & 60Hz

Introduction

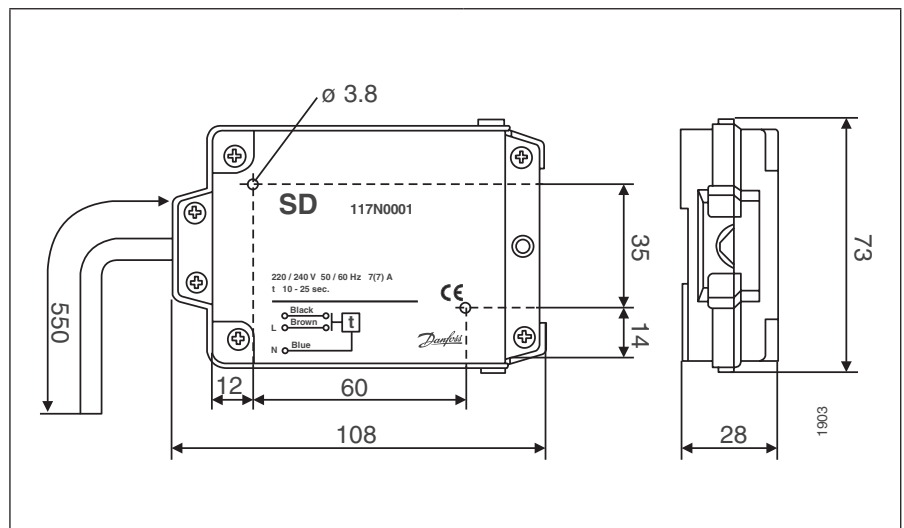


The time delay relay type SD is designed for staggered start of two compressors in the Twin-version as the one-phase mains cannot normally be loaded with the total starting current of both compressors.

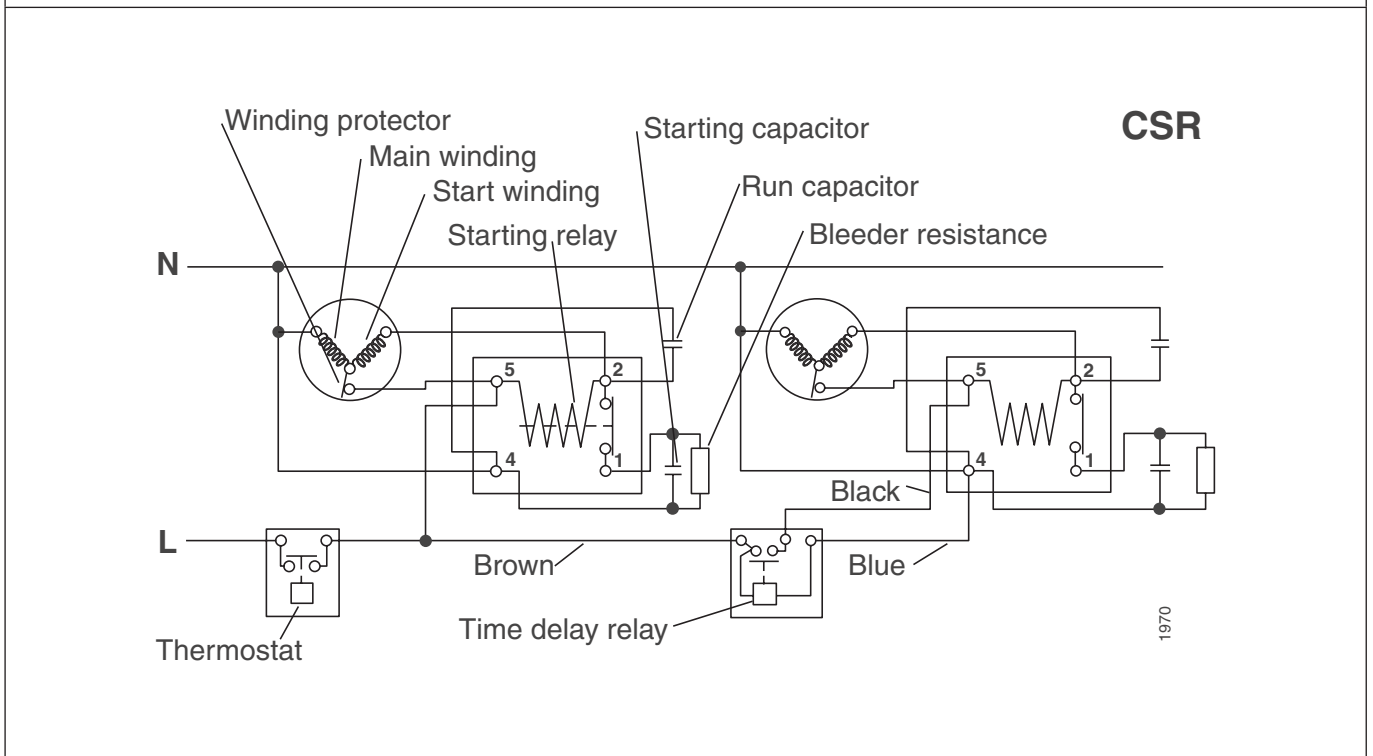
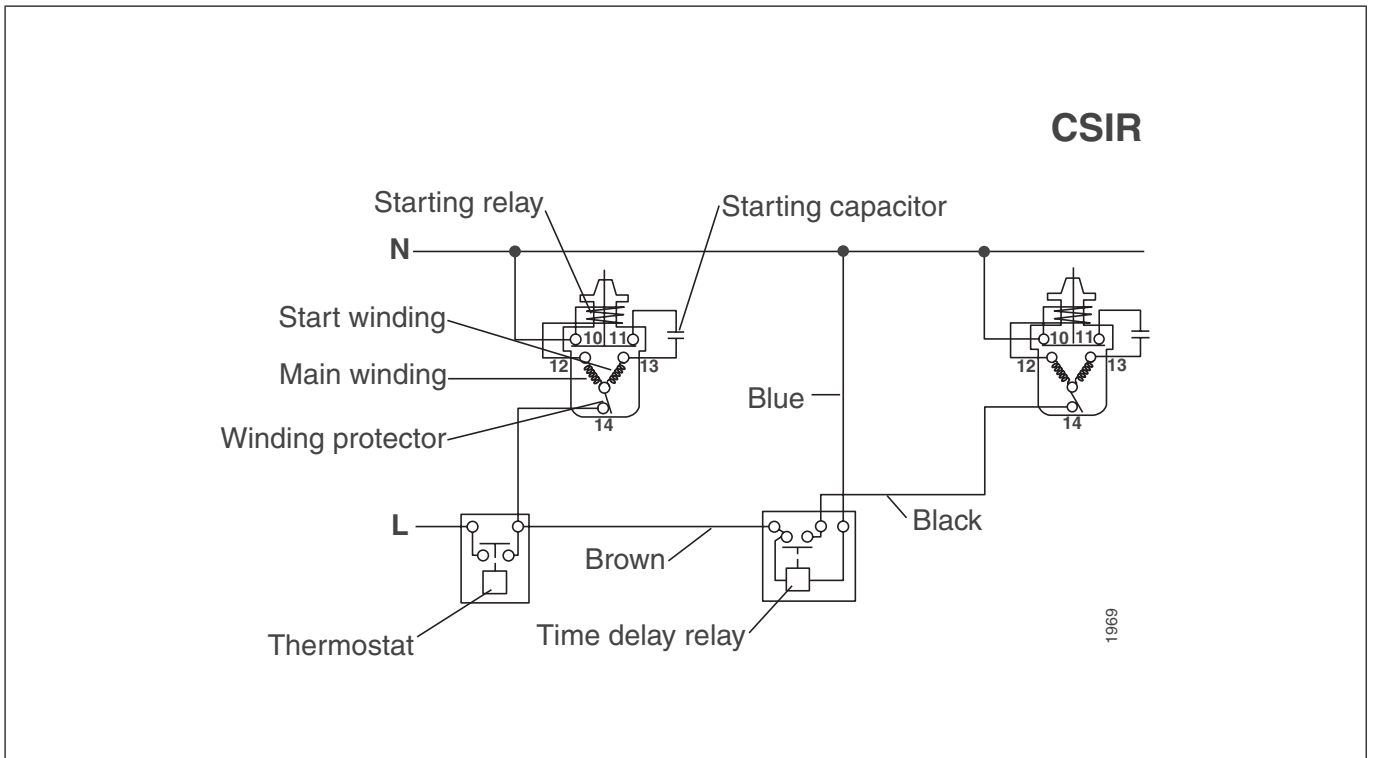
When the time delay relay is used, first one compressor is started, and about 10 seconds later the second compressor is started. This ensures the best possible characteristics and the least load on the mains. The time delay relay has the following specification:

Technical data

Code number	117N0001
Voltage	220 - 240 V
Min. supply voltage	187 V
Max. supply voltage	255 V
Mains frequency	50 to 60 Hz
Max. operating current	7 (7) A
Max. starting current	25 A for 4 seconds
Temperature range, operation	-10 to 55°C
Temperature range, storage	-40 to 70°C
Time delay at 25°C, 220 V	10 to 25 seconds
Mounting orientation	to suit installation
Life time	500.000 cycles, 50.000 hours
Enclosure	IP 20
Connection cable / spade connectors	3 x 0,75 mm ² / 6.3 mm



Wiring diagrams



Danfoss can accept no responsibility for possible errors in catalogues, brochures and other printed material. Danfoss reserves the right to alter its products without notice. This also applies to products already on order provided that such alterations can be made without subsequential changes being necessary in specifications already agreed. All trademarks in this material are property of the respective companies. Danfoss and the Danfoss logotype are trademarks of Danfoss A/S. All rights reserved.