



Quick introduction

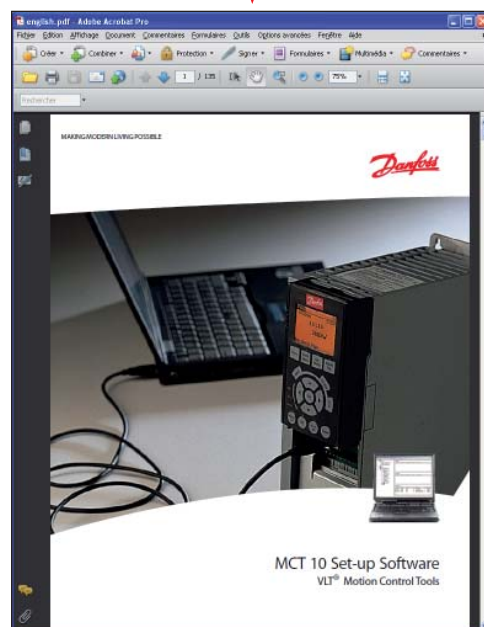
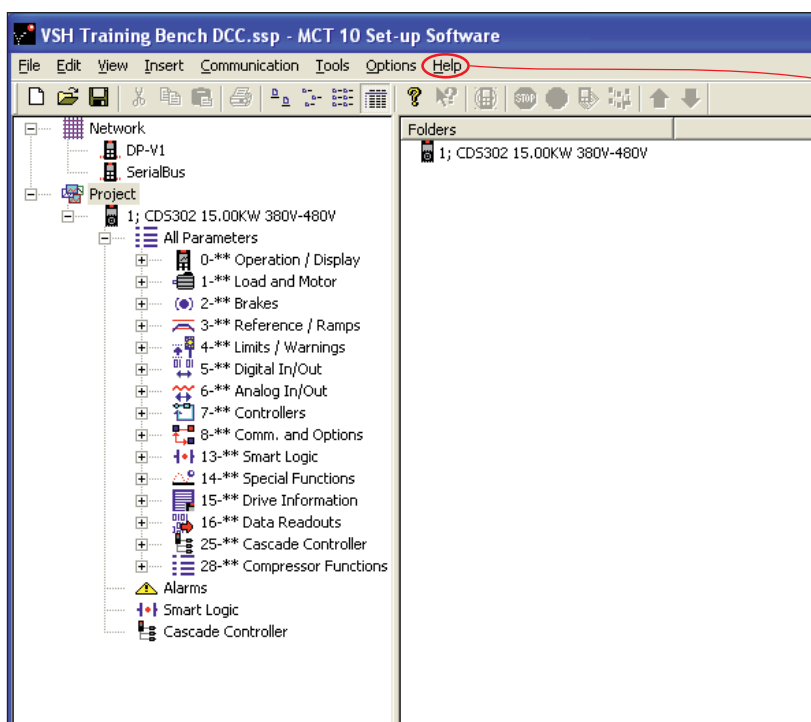
MCT10 Set-up Software

MCT10 Set-up Software is an interactive tool designed for quick and easy commissioning of Danfoss variable speed drives. It can be used:

- To communicate with drives in the field
- To prepare parameter settings before commissioning
- For commissioning newly installed variable speed drives
- To start a replacement variable speed drive with parameters from the previous drive
- To read/write parameters, configure the system and save the parameters
- To establish a communication network between multiple variable speed drives
- To show graphs of data evolution

MCT10 Set-up Software can be used for CD302 and CDS302 variable speed drives dedicated to Maneurop VSD® and Performer VSD® compressors, as well as for any other Danfoss variable speed drive.

This manual is a quick introduction to support occasional users. All details and updates for experienced users can be found in the original user guide MG.10.R5.02 available from the Danfoss Motion Controls website <http://www.danfoss.com/BusinessAreas/DrivesSolutions/>, or via the Help function on the MCT10 Set-up Software screen.



The software is available in a Basic and Advanced version:

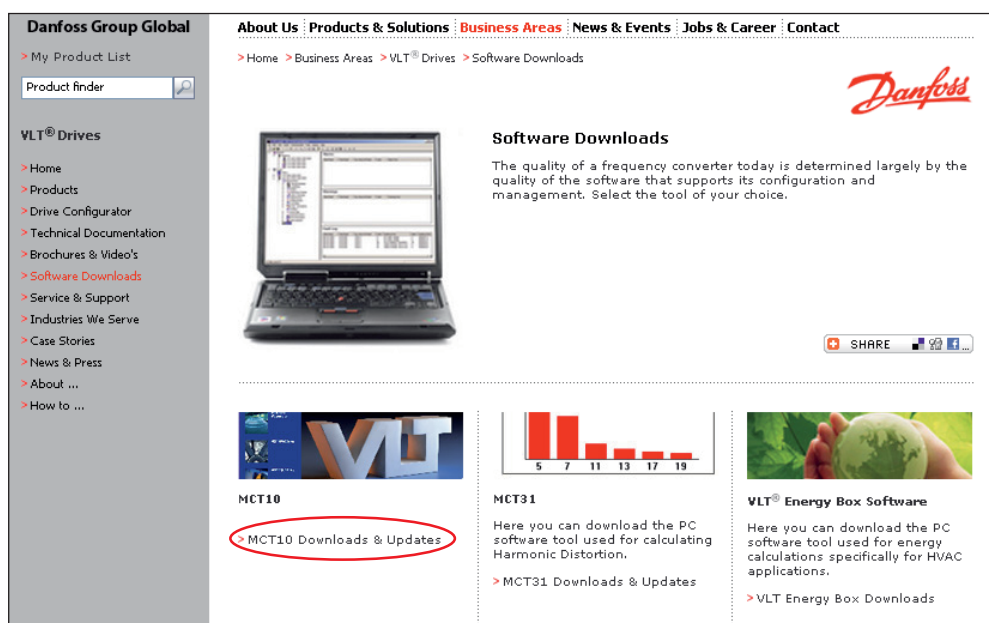
- The Basic version is free of charge but has some restrictions such as number of connected drives, alarm reading only, number of drives for one project and only 2 channels for scope function.
- The Advanced version must be purchased from Danfoss Motion Controls and gives much more possibilities.

Software installation

The first step is to install the MCT10 Set-up Software on a laptop that will be connected to the variable speed drive.

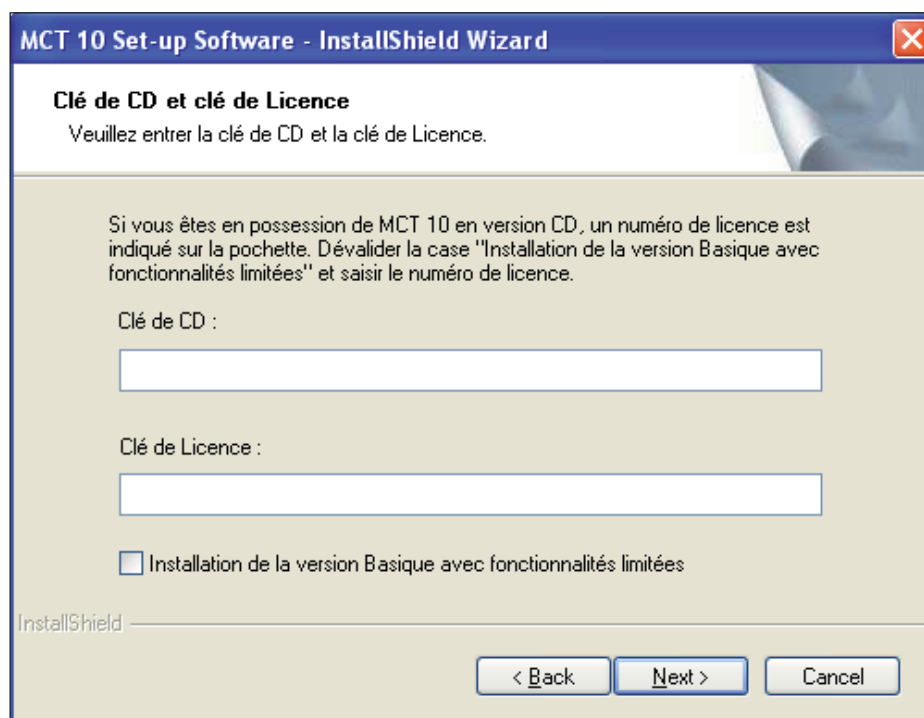
Basic version

- Go to the Danfoss Motion Controls internet website : <http://www.danfoss.com/BusinessAreas/DrivesSolutions/>
- Choose "Software Downloads" in the left navigation menu
- Choose "MCT10 Downloads & Updates" and follow the instructions on the screen.



Advanced version

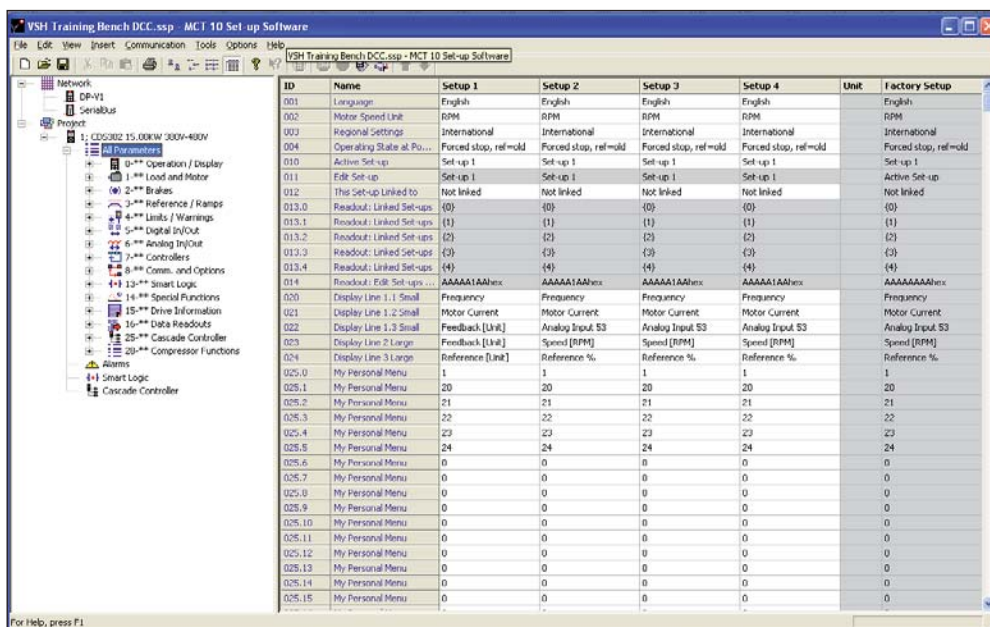
The advanced version can be purchased from Danfoss under code number 130B1000. A CD Rom will be delivered with a license key number. It can also be downloaded in the same way as the basic version, but a license key number is required.



User interface

The screen is divided in a left view and a right view:

- The left view shows a Network folder with online variable speed drives and a Project folder with offline projects.
- The right view shows the detailed parameters of the selected element from the left view. These parameters can be modified.



The "Network folder" contains online variable speed drives connected to the laptop. Readings and settings of parameters can be done as with the Local Control Panel (LCP). Modifications and entered data are directly stored in the connected drive, but not on the hard disk of the laptop. Refer to section "Saving data" to save Network data on the hard disk.

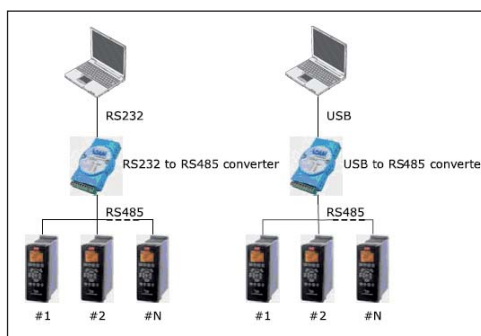
The "Project folder" contains variable speed drive files created during offline work to prepare settings or drive data saved during previous online connections.

Set-up the communication

The laptop can be connected to the variable speed drive by RS485 or USB ports.

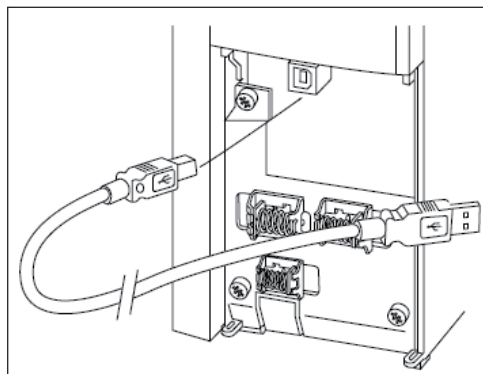
RS485 communication

Connect the laptop USB port or RS232 port to the RS485 converter. Connect the RS485 converter to 68-69 terminals on the variable speed drive.



USB communication

CD302 and CDS302 variable speed drives are all equipped with a USB port (type B). Use a standard USB cable (male type A – male type B) to connect the laptop to the drive.



Read/Write parameters

Read/write settings

Before reading/writing parameters from/to a drive, some settings may be necessary. Select "Options" in the menu bar and proceed to the settings of "Read from drive" or "Write to drive" options.

Read from a drive

The variable speed drive must be scanned. When a USB port is used, the software automatically performs this scan. In other cases, the scan must be started by clicking the "Scan" icon.

Right click on the desired drive and select "Read from drive". The software will access the online drive and its parameters appear in the right view of the screen.

Write to a drive

Parameters can be modified in the right view of the screen and saved in the drive by selecting "Write to drive".

Saving data

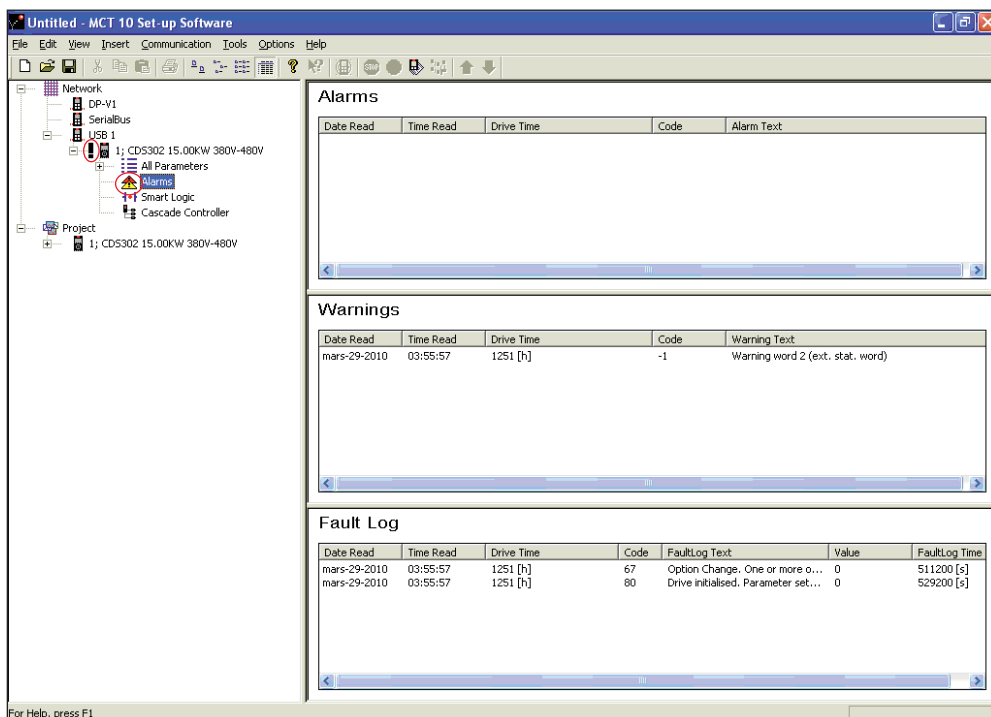
By using the Network folder, data are saved only in the online variable speed drive. To save data from an online drive on the hard disk of the laptop, proceed as following:

- Select the drive in the "Network folder"
- Right click, and select "Copy"
- Select a "Project folder" to save the data. "Right click" and select "Paste"
A file is created in the Project folder
- Select "File" in the main menu bar and select "Save as"
- Give a name to the file and store it on the hard disk. A file with .ssp extension is created and saved. It will be accessible afterwards through the Project folder on the left view of the screen.

Alarm, warning and fault log

The read and store alarms, warnings and fault logging functions must be enabled in MCT10 Set-up software. Go to main menu bar and select "Options – Updating Alarms and Warnings". The MCT10 will automatically read the alarms, warnings and fault loggings every time the "read from/write" to functions are activated.

When an alarm is stored, a sign appears next to the drive icon in the left view. By clicking on the sign, the view is expanded and the alarms are shown by red and yellow triangle signs. Refer to the variable speed drive manual for alarms/warnings explanations.



Scope function

The MCT10 Set-up software has an integrated scope function to show graphs of the data evolution. This can be useful to evaluate the system functioning at commissioning, or to solve instability issues.

The scope function can be activated for any project or network folders.

- Right click on the drive icon
- Select "new" and "scope folder"
- Follow the instructions on the screen to define the numbers of channels needed, and the data to be monitored



The Danfoss product range for the refrigeration and air conditioning industry

Within refrigeration and air conditioning, Danfoss is a worldwide manufacturer with a leading position in industrial, commercial and supermarket refrigeration as well as air conditioning and climate solutions.

We focus on our core business of making quality products, components and systems that enhance performance and reduce total life cycle costs – the key to major savings.



*Controls for
Commercial Refrigeration*



*Controls for
Industrial Refrigeration*



*Electronic Controls &
Sensors*



Industrial Automation



Household Compressors



Commercial Compressors



Sub-Assemblies



Thermostats



*Brazen plate
heat exchanger*

We are offering a single source for one of the widest ranges of innovative refrigeration and air conditioning components and systems in the world. And, we back technical solutions with business solution to help your company reduce costs, streamline processes and achieve your business goals.

Danfoss A/S • www.danfoss.com

member of:



www.asercom.org

Danfoss Commercial Compressors <http://cc.danfoss.com>

Danfoss can accept no responsibility for possible errors in catalogues, brochures and other printed material. Danfoss reserves the right to alter its products without notice. This also applies to products already on order provided that such alterations can be made without subsequential changes being necessary in specifications already agreed. All trademarks in this material are property of the respective companies. Danfoss and the Danfoss logotype are trademarks of Danfoss A/S. All rights reserved.