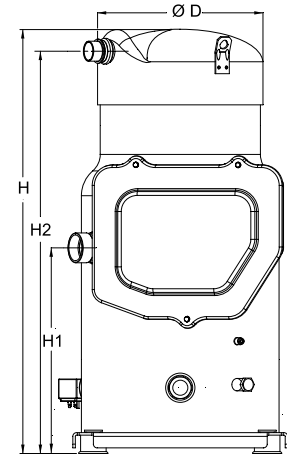


General Characteristics

Model number (on compressor nameplate)		VSH170AJANA
Code number for Singlepack*		120G0006
Drawing number		8551174b
Suction and discharge connections		Brazed
Suction connection		1-5/8" ODF
Discharge connection		1-1/8" ODF
Oil sight glass		Threaded
Oil equalization connection		2-1/4" Rotolock
Oil drain connection		1/4" flare
LP gauge port		Schrader
IPR valve		None
Swept volume	10.39 in3/rev	
Net weight	236 lbs	
Oil charge	227 oz, POE - 160SZ	
Maximum system test pressure Low Side / High side	438 psi / 653 psi	
Maximum differential test pressure	537 psi	
Maximum number of starts per hour	12	
Refrigerant charge limit	30 lbs	
Approved refrigerants	R410A	

Dimensions

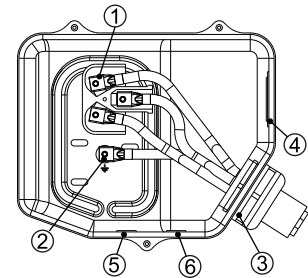


D=12.5 inch, H=27 inch,
H1=13 inch, H2=25.4 inch, H3=- inch

Electrical Characteristics

Nominal voltage	Frequency converter CDS302 required with supply voltage 200-240V/3/50-60Hz
Voltage range	180-264 V supply to frequency converter
Rated Load Amps (RLA)	120 A
Maximum Must Trip current (MMT)	150 A
Locked Rotor Amps (LRA)	699 A
Motor protection	Motor protection by frequency converter

Terminal box



- IP54 (with cable gland)
- 1: Power connection, 3 x 4.8 mm (3/16")
 - 2: Earth M4
 - 3: Hole 50.5 mm (1.99")
 - 4: Knock-out 63.5 mm (2.50")
 - 5: Knock-out Ø 22.5 mm (0.89")
 - 6: Knock-out Ø 22.5 mm (0.89")

Recommended Installation torques

Oil sight glass	44 ft.lbs
Power connections / Earth connection	2 ft.lbs / 1 ft.lbs
Mounting bolts	15 ft.lbs

Parts shipped with compressor

Mounting kit with grommets and sleeves
Initial oil charge
Installation instructions

Approvals : CE certified, UL certified when connected to frequency converter, -

*Singlepack: Compressor in cardboard box

Rotolock accessories, suction side	Code no.
Solder sleeve, P03 (2-1/4" Rotolock, 1-5/8" ODF)	8153006
Rotolock valve, V03 (2-1/4" Rotolock, 1-5/8" ODF)	8168026
Rotolock adapter (2"1/4 Rotolock, 1"5/8 ODF)	120Z0432
Gasket, 2-1/4"	8156133

Rotolock accessories, discharge side	Code no.
Solder sleeve, P02 (1-3/4" Rotolock, 1-1/8" ODF)	8153004
Angle adapter, C02 (1-3/4" Rotolock, 1-1/8" ODF)	8168005
Rotolock valve, V02 (1-3/4" Rotolock, 1-1/8" ODF)	8168028
Rotolock adapter (1-3/4" Rotolock, 1-1/8" ODF)	120Z0364
Gasket, 1-3/4"	8156132

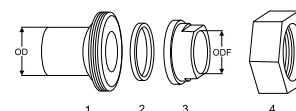
Rotolock accessories, sets	Code no.
Solder sleeve adapter set, 1-5/8" ODF & 1-1/8" ODF	7765028
Valve set, V03 (2-1/4"~1-5/8"), V02 (1-3/4"~1-1/8")	7703383
Gasket set, 1-1/4", 1-3/4", 2-1/4", OSG gaskets black & white	8156013

Oil / lubricants	Code no.
POE lubricant, 160SZ, 1 liter can	7754023
POE lubricant, 160SZ, 2 liter can	120Z0571

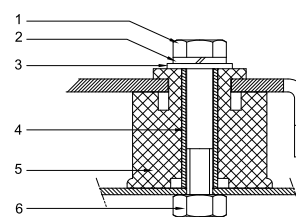
Crankcase heaters	Code no.
Surface sump heater + bottom insulation, 56 W, 24 V, CE mark, UL	120Z0360
Surface sump heater + bottom insulation, 56 W, 230 V, CE mark, UL	120Z0376
Belt type crankcase heater, 75 W, 110 V, CE mark, UL	7773110
Belt type crankcase heater, 75 W, 230 V, CE mark, UL	7773108

Miscellaneous accessories	Code no.
Discharge temperature sensor / converter	120Z0157
Discharge temperature sensor	120Z0158
Discharge temperature converter	120Z0159
Acoustic hood for scroll compressor VSH170	120Z0154
Discharge thermostat kit	7750009

Spare parts	Code no.
Mounting kit for 1 scroll compressor including 4 grommets, 4 sleeves, 4 bolts, 4 washers	8156138
Oil sight glass with gaskets (black & white)	8156019
Gasket for oil sight glass (white teflon)	8156129
Terminal box incl cover	120Z0147
Terminal box cover	120Z0150
T block connector 3.2" x 3.2"	8173331

Solder sleeve adapter set


- 1: Rotolock adapter (Suc & Dis)
- 2: Gasket (Suc & Dis)
- 3: Solder sleeve (Suc & Dis)
- 4: Rotolock nut (Suc & Dis)

Mounting kit


- 1: Bolt (4x)
- 2: Lock washer (4x)
- 3: Flat washer (4x)
- 4: Sleeve (4x)
- 5: Grommet (4x)
- 6: Nut (4x)

Performance data at 30 Hz, ARI rating conditions
R410A

Cond. temp. in °F (tc)	Evaporating temperature in °F (to)							
	0	10	20	30	40	45	55	59

Cooling capacity in Btu/h

70	-	41 374	57 158	75 722	97 124	121 426	-	-	-
90	-	33 946	48 231	64 748	83 560	104 728	116 215	141 037	151 666
110	-	-	39 902	54 909	71 660	90 218	100 196	121 589	130 694
130	-	-	-	-	59 045	75 597	84 362	102 918	110 735
140	-	-	-	-	-	67 630	75 940	93 374	100 664
150	-	-	-	-	-	-	-	-	-
154	-	-	-	-	-	-	-	-	-

Power input in W

70	-	4 511	4 554	4 558	4 474	4 251	-	-	-
90	-	5 900	5 922	5 974	6 005	5 965	5 903	5 665	5 518
110	-	-	7 743	7 744	7 791	7 836	7 842	7 790	7 736
130	-	-	-	-	10 249	10 280	10 305	10 340	10 341
140	-	-	-	-	-	11 848	11 863	11 906	11 918
150	-	-	-	-	-	-	-	-	-
154	-	-	-	-	-	-	-	-	-

Current consumption in A

70	-	13.34	13.54	13.72	13.78	13.65	-	-	-
90	-	17.81	17.89	18.03	18.13	18.10	18.02	17.66	17.42
110	-	-	22.29	22.33	22.40	22.43	22.40	22.20	22.05
130	-	-	-	-	27.83	27.85	27.85	27.76	27.67
140	-	-	-	-	-	31.35	31.35	31.29	31.23
150	-	-	-	-	-	-	-	-	-
154	-	-	-	-	-	-	-	-	-

Mass flow in lbs/h

70	-	464	639	841	1 072	1 332	-	-	-
90	-	422	591	783	999	1 239	1 368	1 646	1 764
110	-	-	543	736	949	1 180	1 303	1 565	1 675
130	-	-	-	-	886	1 121	1 244	1 501	1 608
140	-	-	-	-	-	1 080	1 205	1 465	1 572
150	-	-	-	-	-	-	-	-	-
154	-	-	-	-	-	-	-	-	-

Energy Efficiency Ratio (E.E.R.)

70	-	9.17	12.55	16.61	21.71	28.56	-	-	-
90	-	5.75	8.14	10.84	13.92	17.56	19.69	24.90	27.49
110	-	-	5.15	7.09	9.20	11.51	12.78	15.61	16.89
130	-	-	-	-	5.76	7.35	8.19	9.95	10.71
140	-	-	-	-	-	5.71	6.40	7.84	8.45
150	-	-	-	-	-	-	-	-	-
154	-	-	-	-	-	-	-	-	-

Nominal performance at to = 45 °F, tc = 130 °F

Cooling capacity	84 362	Btu/h	Current consumption	27.85	A
Power input	10 305	W	Mass flow	1 244	lbs/h
E.E.R.	8.19				

Pressure switch settings

Maximum HP switch setting	653	psi(g)
Minimum LP switch setting	22	psi(g)
LP pump down setting	33	psi(g)

T 0 : Evaporating temperature at dew point

T C : Condensing temperature at dew point

Rating conditions : Superheat = 20 °F , Subcooling = 15 °F

Tolerance according EN12900

Sound power data

Sound power level		dB(A)
With acoustic hood		dB(A)

Danfoss can accept no responsibility for possible errors in catalogues, brochures and other printed material. Danfoss reserves the right to alter its products without notice. This also applies to products already on order provided that such alternations can be made without subsequential changes being necessary in specifications already agreed. All trademarks in this material are property of the respective companies. Danfoss and the Danfoss logotype and Performer are trademarks of Danfoss A/S. All rights reserved.

Performance data at 35 Hz, ARI rating conditions
R410A

Cond. temp. in °F (tc)	Evaporating temperature in °F (to)							
	0	10	20	30	40	45	55	59

Cooling capacity in Btu/h

70	-	51 638	68 814	89 129	112 740	139 801	-	-	-
90	-	43 419	59 105	77 402	98 467	122 460	135 603	164 283	176 676
110	-	-	49 828	66 389	85 191	106 393	117 945	143 054	153 874
130	-	-	-	-	70 958	89 725	99 863	121 755	131 145
140	-	-	-	-	-	80 723	90 261	110 759	119 521
150	-	-	-	-	-	-	-	-	-
154	-	-	-	-	-	-	-	-	-

Power input in W

70	-	5 200	5 244	5 245	5 160	4 945	-	-	-
90	-	6 824	6 848	6 894	6 917	6 873	6 813	6 585	6 447
110	-	-	8 852	8 849	8 888	8 923	8 925	8 873	8 822
130	-	-	-	-	11 540	11 561	11 581	11 610	11 610
140	-	-	-	-	-	13 248	13 258	13 294	13 305
150	-	-	-	-	-	-	-	-	-
154	-	-	-	-	-	-	-	-	-

Current consumption in A

70	-	14.03	13.96	13.85	13.66	13.34	-	-	-
90	-	20.06	20.09	20.16	20.23	20.24	20.20	20.04	19.92
110	-	-	25.10	25.18	25.32	25.49	25.57	25.67	25.69
130	-	-	-	-	30.94	31.10	31.20	31.40	31.48
140	-	-	-	-	-	34.65	34.73	34.93	35.01
150	-	-	-	-	-	-	-	-	-
154	-	-	-	-	-	-	-	-	-

Mass flow in lbs/h

70	-	579	768	987	1 240	1 526	-	-	-
90	-	539	724	936	1 177	1 448	1 596	1 916	2 054
110	-	-	678	890	1 128	1 392	1 534	1 842	1 974
130	-	-	-	-	1 065	1 331	1 472	1 775	1 904
140	-	-	-	-	-	1 290	1 433	1 737	1 865
150	-	-	-	-	-	-	-	-	-
154	-	-	-	-	-	-	-	-	-

Energy Efficiency Ratio (E.E.R.)

70	-	9.93	13.12	16.99	21.85	28.27	-	-	-
90	-	6.36	8.63	11.23	14.24	17.82	19.90	24.95	27.40
110	-	-	5.63	7.50	9.59	11.92	13.21	16.12	17.44
130	-	-	-	-	6.15	7.76	8.62	10.49	11.30
140	-	-	-	-	-	6.09	6.81	8.33	8.98
150	-	-	-	-	-	-	-	-	-
154	-	-	-	-	-	-	-	-	-

Nominal performance at to = 45 °F, tc = 130 °F

Cooling capacity	99 863	Btu/h	Current consumption	31.20	A
Power input	11 581	W	Mass flow	1 472	lbs/h
E.E.R.	8.62				

Pressure switch settings

Maximum HP switch setting	653	psi(g)
Minimum LP switch setting	22	psi(g)
LP pump down setting	33	psi(g)

T 0 : Evaporating temperature at dew point

T C : Condensing temperature at dew point

Rating conditions : Superheat = 20 °F , Subcooling = 15 °F

Tolerance according EN12900

Sound power data

Sound power level	dB(A)
With acoustic hood	dB(A)

Danfoss can accept no responsibility for possible errors in catalogues, brochures and other printed material. Danfoss reserves the right to alter its products without notice. This also applies to products already on order provided that such alternations can be made without subsequential changes being necessary in specifications already agreed. All trademarks in this material are property of the respective companies. Danfoss and the Danfoss logotype and Performer are trademarks of Danfoss A/S. All rights reserved.

Performance data at 40 Hz, ARI rating conditions
R410A

Cond. temp. in °F (tc)	Evaporating temperature in °F (to)								
	0	10	20	30	40	45	55	59	

Cooling capacity in Btu/h

70	-	61 731	80 379	102 527	128 419	158 300	-	-	-
90	-	52 715	69 868	90 002	113 365	140 204	155 004	187 519	201 657
110	-	-	59 645	77 825	98 718	122 575	135 694	164 470	176 972
130	-	-	-	-	82 879	103 889	115 396	140 578	151 507
140	-	-	-	-	-	93 855	104 624	128 153	138 356
150	-	-	-	-	-	-	-	-	-
154	-	-	-	-	-	-	-	-	-

Power input in W

70	-	5 903	5 953	5 958	5 879	5 677	-	-	-
90	-	7 754	7 784	7 830	7 852	7 810	7 753	7 543	7 415
110	-	-	9 969	9 968	10 004	10 036	10 038	9 991	9 946
130	-	-	-	-	12 851	12 869	12 887	12 916	12 918
140	-	-	-	-	-	14 674	14 683	14 718	14 731
150	-	-	-	-	-	-	-	-	-
154	-	-	-	-	-	-	-	-	-

Current consumption in A

70	-	14.98	14.68	14.34	13.93	13.44	-	-	-
90	-	22.39	22.39	22.41	22.45	22.48	22.50	22.50	22.49
110	-	-	27.96	28.09	28.30	28.59	28.76	29.14	29.30
130	-	-	-	-	34.16	34.44	34.63	35.11	35.34
140	-	-	-	-	-	38.10	38.25	38.68	38.90
150	-	-	-	-	-	-	-	-	-
154	-	-	-	-	-	-	-	-	-

Mass flow in lbs/h

70	-	692	896	1 134	1 408	1 723	-	-	-
90	-	655	856	1 089	1 355	1 658	1 824	2 187	2 345
110	-	-	811	1 043	1 306	1 603	1 765	2 118	2 271
130	-	-	-	-	1 245	1 541	1 701	2 049	2 199
140	-	-	-	-	-	1 500	1 661	2 009	2 158
150	-	-	-	-	-	-	-	-	-
154	-	-	-	-	-	-	-	-	-

Energy Efficiency Ratio (E.E.R.)

70	-	10.46	13.50	17.21	21.84	27.89	-	-	-
90	-	6.80	8.98	11.50	14.44	17.95	19.99	24.86	27.20
110	-	-	5.98	7.81	9.87	12.21	13.52	16.46	17.79
130	-	-	-	-	6.45	8.07	8.95	10.88	11.73
140	-	-	-	-	-	6.40	7.13	8.71	9.39
150	-	-	-	-	-	-	-	-	-
154	-	-	-	-	-	-	-	-	-

Nominal performance at to = 45 °F, tc = 130 °F

Cooling capacity	115 396	Btu/h	Current consumption	34.63	A
Power input	12 887	W	Mass flow	1 701	lbs/h
E.E.R.	8.95				

Pressure switch settings

Maximum HP switch setting	653	psi(g)
Minimum LP switch setting	22	psi(g)
LP pump down setting	33	psi(g)

T 0 : Evaporating temperature at dew point

T C : Condensing temperature at dew point

Rating conditions : Superheat = 20 °F , Subcooling = 15 °F

Tolerance according EN12900

Sound power data

Sound power level		dB(A)
With acoustic hood		dB(A)

Danfoss can accept no responsibility for possible errors in catalogues, brochures and other printed material. Danfoss reserves the right to alter its products without notice. This also applies to products already on order provided that such alternations can be made without subsequential changes being necessary in specifications already agreed. All trademarks in this material are property of the respective companies. Danfoss and the Danfoss logotype and Performer are trademarks of Danfoss A/S. All rights reserved.

Performance data at 45 Hz, ARI rating conditions
R410A

Cond. temp. in °F (tc)	Evaporating temperature in °F (to)							
	0	10	20	30	40	45	55	59

Cooling capacity in Btu/h

70	-	71 656	91 854	115 914	144 162	176 923	-	-	-
90	-	61 834	80 520	102 550	128 254	157 960	174 417	210 744	226 607
110	-	-	69 354	89 218	112 243	138 765	153 442	185 836	199 988
130	-	-	-	-	94 809	118 088	130 961	159 387	171 820
140	-	-	-	-	-	107 025	119 031	145 556	157 168
150	-	-	-	-	-	-	-	-	-
154	-	-	-	-	-	-	-	-	-

Power input in W

70	-	6 622	6 682	6 696	6 629	6 446	-	-	-
90	-	8 688	8 729	8 780	8 808	8 776	8 726	8 537	8 421
110	-	-	11 095	11 101	11 140	11 176	11 181	11 146	11 108
130	-	-	-	-	14 182	14 204	14 223	14 259	14 265
140	-	-	-	-	-	16 127	16 138	16 178	16 195
150	-	-	-	-	-	-	-	-	-
154	-	-	-	-	-	-	-	-	-

Current consumption in A

70	-	16.20	15.72	15.18	14.58	13.96	-	-	-
90	-	24.80	24.79	24.78	24.79	24.85	24.89	25.05	25.13
110	-	-	30.88	31.06	31.34	31.74	31.99	32.59	32.88
130	-	-	-	-	37.49	37.89	38.16	38.88	39.23
140	-	-	-	-	-	41.70	41.92	42.56	42.90
150	-	-	-	-	-	-	-	-	-
154	-	-	-	-	-	-	-	-	-

Mass flow in lbs/h

70	-	803	1 023	1 280	1 578	1 921	-	-	-
90	-	768	987	1 241	1 533	1 867	2 052	2 458	2 635
110	-	-	943	1 196	1 485	1 815	1 996	2 394	2 567
130	-	-	-	-	1 424	1 751	1 931	2 323	2 493
140	-	-	-	-	-	1 712	1 891	2 281	2 450
150	-	-	-	-	-	-	-	-	-
154	-	-	-	-	-	-	-	-	-

Energy Efficiency Ratio (E.E.R.)

70	-	10.82	13.75	17.31	21.75	27.45	-	-	-
90	-	7.12	9.22	11.68	14.56	18.00	19.99	24.69	26.91
110	-	-	6.25	8.04	10.08	12.42	13.72	16.67	18.00
130	-	-	-	-	6.69	8.31	9.21	11.18	12.04
140	-	-	-	-	-	6.64	7.38	9.00	9.70
150	-	-	-	-	-	-	-	-	-
154	-	-	-	-	-	-	-	-	-

Nominal performance at to = 45 °F, tc = 130 °F

Cooling capacity	130 961	Btu/h	Current consumption	38.16	A
Power input	14 223	W	Mass flow	1 931	lbs/h
E.E.R.	9.21				

Pressure switch settings

Maximum HP switch setting	653	psi(g)
Minimum LP switch setting	22	psi(g)
LP pump down setting	33	psi(g)

T 0 : Evaporating temperature at dew point

T C : Condensing temperature at dew point

Rating conditions : Superheat = 20 °F , Subcooling = 15 °F

Tolerance according EN12900

Sound power data

Sound power level	dB(A)
With acoustic hood	dB(A)

Danfoss can accept no responsibility for possible errors in catalogues, brochures and other printed material. Danfoss reserves the right to alter its products without notice. This also applies to products already on order provided that such alternations can be made without subsequential changes being necessary in specifications already agreed. All trademarks in this material are property of the respective companies. Danfoss and the Danfoss logotype and Performer are trademarks of Danfoss A/S. All rights reserved.

Performance data at 50 Hz, ARI rating conditions
R410A

Cond. temp. in °F (tc)	Evaporating temperature in °F (to)								
	-10	0	10	20	30	40	45	55	59

Cooling capacity in Btu/h

70	63 412	81 413	103 240	129 292	159 970	195 672	-	-	-
90	53 788	70 777	91 061	115 045	143 133	175 729	193 844	233 959	251 527
110	-	-	78 956	100 567	125 765	154 962	171 188	207 152	222 922
130	-	-	-	-	106 747	132 324	146 558	178 183	192 086
140	-	-	-	-	-	120 234	133 480	162 968	175 958
150	-	-	-	-	-	-	120 516	148 101	160 286
154	-	-	-	-	-	-	-	142 795	154 738

Power input in W

70	7 266	7 354	7 430	7 460	7 412	7 252	-	-	-
90	9 615	9 628	9 683	9 746	9 786	9 770	9 730	9 567	9 466
110	-	-	12 229	12 247	12 295	12 342	12 354	12 337	12 309
130	-	-	-	-	15 534	15 565	15 590	15 638	15 652
140	-	-	-	-	-	17 607	17 623	17 675	17 697
150	-	-	-	-	-	-	20 033	20 068	20 091
154	-	-	-	-	-	-	-	21 142	21 163

Current consumption in A

70	18.14	17.68	17.07	16.37	15.63	14.88	-	-	-
90	27.23	27.29	27.28	27.25	27.25	27.32	27.40	27.67	27.83
110	-	-	33.86	34.10	34.44	34.93	35.24	36.04	36.43
130	-	-	-	-	40.93	41.43	41.78	42.70	43.16
140	-	-	-	-	-	45.44	45.73	46.56	47.00
150	-	-	-	-	-	-	50.75	51.40	51.77
154	-	-	-	-	-	-	-	53.71	54.04

Mass flow in lbs/h

70	710	912	1 150	1 427	1 749	2 121	-	-	-
90	676	879	1 116	1 392	1 711	2 077	2 280	2 728	2 924
110	-	-	1 074	1 348	1 664	2 027	2 227	2 669	2 862
130	-	-	-	-	1 603	1 963	2 161	2 597	2 787
140	-	-	-	-	-	1 923	2 120	2 554	2 743
150	-	-	-	-	-	-	2 074	2 505	2 693
154	-	-	-	-	-	-	-	2 484	2 671

Energy Efficiency Ratio (E.E.R.)

70	8.73	11.07	13.89	17.33	21.58	26.98	-	-	-
90	5.59	7.35	9.40	11.80	14.63	17.99	19.92	24.45	26.57
110	-	-	6.46	8.21	10.23	12.56	13.86	16.79	18.11
130	-	-	-	-	6.87	8.50	9.40	11.39	12.27
140	-	-	-	-	-	6.83	7.57	9.22	9.94
150	-	-	-	-	-	-	6.02	7.38	7.98
154	-	-	-	-	-	-	-	6.75	7.31

Nominal performance at to = 45 °F, tc = 130 °F

Cooling capacity	146 558	Btu/h	Current consumption	41.78	A
Power input	15 590	W	Mass flow	2 161	lbs/h
E.E.R.	9.40				

Pressure switch settings

Maximum HP switch setting	653	psi(g)
Minimum LP switch setting	22	psi(g)
LP pump down setting	33	psi(g)

T 0 : Evaporating temperature at dew point

T C : Condensing temperature at dew point

Rating conditions : Superheat = 20 °F , Subcooling = 15 °F

Tolerance according EN12900

Sound power data

Sound power level		dB(A)
With acoustic hood		dB(A)

Danfoss can accept no responsibility for possible errors in catalogues, brochures and other printed material. Danfoss reserves the right to alter its products without notice. This also applies to products already on order provided that such alternations can be made without subsequential changes being necessary in specifications already agreed. All trademarks in this material are property of the respective companies. Danfoss and the Danfoss logotype and Performer are trademarks of Danfoss A/S. All rights reserved.

Performance data at 55 Hz, ARI rating conditions
R410A

Cond. temp. in °F (tc)	Evaporating temperature in °F (to)								
	-10	0	10	20	30	40	45	55	59

Cooling capacity in Btu/h

70	71 584	90 999	114 534	142 659	175 841	214 545	-	-	-
90	61 167	79 542	101 491	127 487	158 002	193 510	213 284	257 164	276 418
110	-	-	88 448	111 871	139 284	171 167	188 934	228 419	245 774
130	-	-	-	-	118 692	146 595	162 188	196 965	212 304
140	-	-	-	-	-	133 481	147 973	180 389	194 726
150	-	-	-	-	-	-	133 942	164 223	177 666
154	-	-	-	-	-	-	-	158 486	171 657

Power input in W

70	7 992	8 102	8 198	8 249	8 226	8 096	-	-	-
90	10 539	10 574	10 647	10 728	10 786	10 792	10 766	10 635	10 548
110	-	-	13 372	13 406	13 470	13 534	13 557	13 564	13 547
130	-	-	-	-	16 907	16 953	16 987	17 055	17 077
140	-	-	-	-	-	19 114	19 138	19 208	19 238
150	-	-	-	-	-	-	21 685	21 737	21 768
154	-	-	-	-	-	-	-	22 872	22 901

Current consumption in A

70	19.92	19.43	18.73	17.92	17.05	16.22	-	-	-
90	29.70	29.85	29.88	29.84	29.83	29.91	30.01	30.38	30.61
110	-	-	36.89	37.20	37.59	38.16	38.52	39.47	39.95
130	-	-	-	-	44.47	45.08	45.49	46.58	47.13
140	-	-	-	-	-	49.33	49.68	50.68	51.21
150	-	-	-	-	-	-	55.03	55.83	56.28
154	-	-	-	-	-	-	-	58.30	58.71

Mass flow in lbs/h

70	802	1 020	1 275	1 573	1 921	2 322	-	-	-
90	769	988	1 244	1 542	1 888	2 288	2 509	2 999	3 213
110	-	-	1 203	1 499	1 843	2 239	2 458	2 943	3 155
130	-	-	-	-	1 783	2 174	2 391	2 870	3 080
140	-	-	-	-	-	2 135	2 351	2 827	3 035
150	-	-	-	-	-	-	2 305	2 778	2 985
154	-	-	-	-	-	-	-	2 757	2 963

Energy Efficiency Ratio (E.E.R.)

70	8.96	11.23	13.97	17.29	21.38	26.50	-	-	-
90	5.80	7.52	9.53	11.88	14.65	17.93	19.81	24.18	26.20
110	-	-	6.61	8.35	10.34	12.65	13.94	16.84	18.14
130	-	-	-	-	7.02	8.65	9.55	11.55	12.43
140	-	-	-	-	-	6.98	7.73	9.39	10.12
150	-	-	-	-	-	-	6.18	7.55	8.16
154	-	-	-	-	-	-	-	6.93	7.50

Nominal performance at to = 45 °F, tc = 130 °F

Cooling capacity	162 188	Btu/h	Current consumption	45.49	A
Power input	16 987	W	Mass flow	2 391	lbs/h
E.E.R.	9.55				

Pressure switch settings

Maximum HP switch setting	653	psi(g)
Minimum LP switch setting	22	psi(g)
LP pump down setting	33	psi(g)

T 0 : Evaporating temperature at dew point

T C : Condensing temperature at dew point

Rating conditions : Superheat = 20 °F , Subcooling = 15 °F

Tolerance according EN12900

Sound power data

Sound power level		dB(A)
With acoustic hood		dB(A)

Danfoss can accept no responsibility for possible errors in catalogues, brochures and other printed material. Danfoss reserves the right to alter its products without notice. This also applies to products already on order provided that such alternations can be made without subsequential changes being necessary in specifications already agreed. All trademarks in this material are property of the respective companies. Danfoss and the Danfoss logotype and Performer are trademarks of Danfoss A/S. All rights reserved.

Performance data at 60 Hz, ARI rating conditions
R410A

Cond. temp. in °F (tc)	Evaporating temperature in °F (to)								
	-10	0	10	20	30	40	45	55	59

Cooling capacity in Btu/h

70	79 516	100 416	125 740	156 017	191 775	233 543	-	-	-
90	68 301	88 130	111 810	139 875	172 862	211 303	232 736	280 358	301 277
110	-	-	97 832	123 133	152 800	187 378	206 677	249 636	268 543
130	-	-	-	-	130 646	160 902	177 849	215 732	232 473
140	-	-	-	-	-	146 765	162 507	197 818	213 471
150	-	-	-	-	-	-	147 402	180 366	195 041
154	-	-	-	-	-	-	-	174 199	188 574

Power input in W

70	8 729	8 864	8 986	9 064	9 072	8 978	-	-	-
90	11 467	11 524	11 620	11 724	11 808	11 843	11 833	11 739	11 670
110	-	-	14 523	14 578	14 665	14 753	14 789	14 827	14 824
130	-	-	-	-	18 301	18 369	18 414	18 507	18 541
140	-	-	-	-	-	20 647	20 682	20 777	20 818
150	-	-	-	-	-	-	23 366	23 441	23 482
154	-	-	-	-	-	-	-	24 637	24 676

Current consumption in A

70	21.90	21.44	20.71	19.82	18.87	17.96	-	-	-
90	32.23	32.50	32.57	32.55	32.53	32.62	32.73	33.17	33.45
110	-	-	39.97	40.36	40.81	41.43	41.83	42.90	43.44
130	-	-	-	-	48.13	48.82	49.29	50.52	51.15
140	-	-	-	-	-	53.36	53.77	54.92	55.52
150	-	-	-	-	-	-	59.51	60.45	60.98
154	-	-	-	-	-	-	-	63.11	63.59

Mass flow in lbs/h

70	890	1 125	1 399	1 720	2 093	2 526	-	-	-
90	858	1 095	1 371	1 692	2 066	2 498	2 738	3 269	3 502
110	-	-	1 330	1 650	2 022	2 451	2 689	3 217	3 448
130	-	-	-	-	1 962	2 386	2 622	3 144	3 372
140	-	-	-	-	-	2 348	2 582	3 100	3 327
150	-	-	-	-	-	-	2 537	3 051	3 276
154	-	-	-	-	-	-	-	3 030	3 255

Energy Efficiency Ratio (E.E.R.)

70	9.11	11.33	13.99	17.21	21.14	26.01	-	-	-
90	5.96	7.65	9.62	11.93	14.64	17.84	19.67	23.88	25.82
110	-	-	6.74	8.45	10.42	12.70	13.97	16.84	18.12
130	-	-	-	-	7.14	8.76	9.66	11.66	12.54
140	-	-	-	-	-	7.11	7.86	9.52	10.25
150	-	-	-	-	-	-	6.31	7.69	8.31
154	-	-	-	-	-	-	-	7.07	7.64

Nominal performance at to = 45 °F, tc = 130 °F

Cooling capacity	177 849	Btu/h	Current consumption	49.29	A
Power input	18 414	W	Mass flow	2 622	lbs/h
E.E.R.	9.66				

Pressure switch settings

Maximum HP switch setting	653	psi(g)
Minimum LP switch setting	22	psi(g)
LP pump down setting	33	psi(g)

T 0 : Evaporating temperature at dew point

T C : Condensing temperature at dew point

Rating conditions : Superheat = 20 °F , Subcooling = 15 °F

Tolerance according EN12900

Sound power data

Sound power level		dB(A)
With acoustic hood		dB(A)

Danfoss can accept no responsibility for possible errors in catalogues, brochures and other printed material. Danfoss reserves the right to alter its products without notice. This also applies to products already on order provided that such alternations can be made without subsequential changes being necessary in specifications already agreed. All trademarks in this material are property of the respective companies. Danfoss and the Danfoss logotype and Performer are trademarks of Danfoss A/S. All rights reserved.

Performance data at 65 Hz, ARI rating conditions
R410A

Cond. temp. in °F (tc)	Evaporating temperature in °F (to)								
	-10	0	10	20	30	40	45	55	59

Cooling capacity in Btu/h

70	87 208	109 664	136 855	169 364	207 774	252 666	-	-	-
90	75 192	96 541	122 018	152 212	187 713	229 109	252 201	303 542	326 107
110	-	-	107 108	134 350	166 314	203 597	224 420	270 803	291 230
130	-	-	-	-	142 608	175 245	193 543	234 486	252 594
140	-	-	-	-	-	160 088	177 085	215 256	232 195
150	-	-	-	-	-	-	160 898	196 530	212 414
154	-	-	-	-	-	-	-	189 933	205 492

Power input in W

70	9 479	9 641	9 793	9 905	9 949	9 897	-	-	-
90	12 398	12 481	12 603	12 736	12 852	12 923	12 932	12 881	12 829
110	-	-	15 683	15 764	15 879	15 999	16 052	16 126	16 138
130	-	-	-	-	19 715	19 811	19 871	19 997	20 045
140	-	-	-	-	-	22 207	22 257	22 382	22 436
150	-	-	-	-	-	-	25 075	25 180	25 233
154	-	-	-	-	-	-	-	26 434	26 485

Current consumption in A

70	24.11	23.71	22.99	22.07	21.07	20.12	-	-	-
90	34.81	35.22	35.36	35.36	35.34	35.43	35.56	36.05	36.36
110	-	-	43.12	43.58	44.08	44.74	45.17	46.32	46.91
130	-	-	-	-	51.89	52.66	53.17	54.52	55.20
140	-	-	-	-	-	57.55	58.01	59.29	59.95
150	-	-	-	-	-	-	64.18	65.26	65.86
154	-	-	-	-	-	-	-	68.12	68.67

Mass flow in lbs/h

70	976	1 228	1 522	1 866	2 267	2 732	-	-	-
90	945	1 200	1 496	1 842	2 243	2 708	2 967	3 540	3 791
110	-	-	1 456	1 801	2 201	2 663	2 920	3 490	3 739
130	-	-	-	-	2 142	2 599	2 853	3 417	3 664
140	-	-	-	-	-	2 561	2 813	3 373	3 618
150	-	-	-	-	-	-	2 770	3 324	3 568
154	-	-	-	-	-	-	-	3 304	3 547

Energy Efficiency Ratio (E.E.R.)

70	9.20	11.37	13.98	17.10	20.88	25.53	-	-	-
90	6.06	7.74	9.68	11.95	14.61	17.73	19.50	23.57	25.42
110	-	-	6.83	8.52	10.47	12.73	13.98	16.79	18.05
130	-	-	-	-	7.23	8.85	9.74	11.73	12.60
140	-	-	-	-	-	7.21	7.96	9.62	10.35
150	-	-	-	-	-	-	6.42	7.81	8.42
154	-	-	-	-	-	-	-	7.19	7.76

Nominal performance at to = 45 °F, tc = 130 °F

Cooling capacity	193 543	Btu/h	Current consumption	53.17	A
Power input	19 871	W	Mass flow	2 853	lbs/h
E.E.R.	9.74				

Pressure switch settings

Maximum HP switch setting	653	psi(g)
Minimum LP switch setting	22	psi(g)
LP pump down setting	33	psi(g)

T 0 : Evaporating temperature at dew point

T C : Condensing temperature at dew point

Rating conditions : Superheat = 20 °F , Subcooling = 15 °F

Tolerance according EN12900

Sound power data

Sound power level		dB(A)
With acoustic hood		dB(A)

Danfoss can accept no responsibility for possible errors in catalogues, brochures and other printed material. Danfoss reserves the right to alter its products without notice. This also applies to products already on order provided that such alternations can be made without subsequential changes being necessary in specifications already agreed. All trademarks in this material are property of the respective companies. Danfoss and the Danfoss logotype and Performer are trademarks of Danfoss A/S. All rights reserved.

Performance data at 70 Hz, ARI rating conditions
R410A

Cond. temp. in °F (tc)	Evaporating temperature in °F (to)								
	-10	0	10	20	30	40	45	55	59

Cooling capacity in Btu/h

70	94 657	118 742	147 880	182 701	223 836	271 913	-	-	-
90	81 838	104 775	132 114	164 494	202 553	246 927	271 680	326 716	350 907
110	-	-	116 275	145 524	179 824	219 824	242 162	291 921	313 836
130	-	-	-	-	154 578	189 623	209 270	253 226	272 667
140	-	-	-	-	-	173 449	191 706	232 703	250 896
150	-	-	-	-	-	-	174 431	212 717	229 784
154	-	-	-	-	-	-	-	205 689	222 410

Power input in W

70	10 240	10 433	10 620	10 771	10 859	10 854	-	-	-
90	13 333	13 442	13 595	13 763	13 918	14 031	14 063	14 059	14 027
110	-	-	16 851	16 963	17 113	17 271	17 344	17 461	17 491
130	-	-	-	-	21 149	21 280	21 358	21 523	21 587
140	-	-	-	-	-	23 793	23 861	24 023	24 093
150	-	-	-	-	-	-	26 812	26 953	27 021
154	-	-	-	-	-	-	-	28 265	28 331

Current consumption in A

70	26.52	26.25	25.58	24.67	23.66	22.70	-	-	-
90	37.44	38.02	38.25	38.29	38.28	38.37	38.49	39.00	39.33
110	-	-	46.31	46.86	47.40	48.10	48.54	49.73	50.35
130	-	-	-	-	55.75	56.61	57.15	58.58	59.30
140	-	-	-	-	-	61.88	62.39	63.77	64.48
150	-	-	-	-	-	-	69.04	70.26	70.91
154	-	-	-	-	-	-	-	73.35	73.97

Mass flow in lbs/h

70	1 059	1 329	1 644	2 013	2 442	2 939	-	-	-
90	1 029	1 302	1 620	1 990	2 421	2 919	3 196	3 810	4 079
110	-	-	1 581	1 951	2 379	2 875	3 151	3 762	4 030
130	-	-	-	-	2 322	2 812	3 085	3 690	3 955
140	-	-	-	-	-	2 775	3 046	3 646	3 910
150	-	-	-	-	-	-	3 003	3 598	3 860
154	-	-	-	-	-	-	-	3 578	3 839

Energy Efficiency Ratio (E.E.R.)

70	9.24	11.38	13.93	16.96	20.61	25.05	-	-	-
90	6.14	7.79	9.72	11.95	14.55	17.60	19.32	23.24	25.02
110	-	-	6.90	8.58	10.51	12.73	13.96	16.72	17.94
130	-	-	-	-	7.31	8.91	9.80	11.77	12.63
140	-	-	-	-	-	7.29	8.03	9.69	10.41
150	-	-	-	-	-	-	6.51	7.89	8.50
154	-	-	-	-	-	-	-	7.28	7.85

Nominal performance at to = 45 °F, tc = 130 °F

Cooling capacity	209 270	Btu/h	Current consumption	57.15	A
Power input	21 358	W	Mass flow	3 085	lbs/h
E.E.R.	9.80				

Pressure switch settings

Maximum HP switch setting	653	psi(g)
Minimum LP switch setting	22	psi(g)
LP pump down setting	33	psi(g)

T 0 : Evaporating temperature at dew point

T C : Condensing temperature at dew point

Rating conditions : Superheat = 20 °F , Subcooling = 15 °F

Tolerance according EN12900

Sound power data

Sound power level		dB(A)
With acoustic hood		dB(A)

Danfoss can accept no responsibility for possible errors in catalogues, brochures and other printed material. Danfoss reserves the right to alter its products without notice. This also applies to products already on order provided that such alternations can be made without subsequential changes being necessary in specifications already agreed. All trademarks in this material are property of the respective companies. Danfoss and the Danfoss logotype and Performer are trademarks of Danfoss A/S. All rights reserved.

Performance data at 75 Hz, ARI rating conditions
R410A

Cond. temp. in °F (tc)	Evaporating temperature in °F (to)								
	-10	0	10	20	30	40	45	55	59

Cooling capacity in Btu/h

70	101 867	127 652	158 816	196 029	239 962	291 286	-	-	-
90	88 241	112 832	142 100	176 725	217 384	264 756	291 171	349 879	375 677
110	-	-	125 334	156 654	193 332	236 058	259 903	312 989	336 359
130	-	-	-	-	166 556	204 037	225 028	271 951	292 691
140	-	-	-	-	-	186 848	206 370	250 159	269 574
150	-	-	-	-	-	-	187 998	228 925	247 149
154	-	-	-	-	-	-	-	221 467	239 327

Power input in W

70	11 012	11 239	11 466	11 663	11 800	11 848	-	-	-
90	14 272	14 409	14 596	14 805	15 006	15 168	15 225	15 273	15 263
110	-	-	18 028	18 176	18 366	18 569	18 666	18 832	18 882
130	-	-	-	-	22 604	22 775	22 875	23 086	23 169
140	-	-	-	-	-	25 407	25 495	25 700	25 788
150	-	-	-	-	-	-	28 578	28 760	28 845
154	-	-	-	-	-	-	-	30 129	30 211

Current consumption in A

70	29.15	29.05	28.49	27.62	26.63	25.68	-	-	-
90	40.12	40.90	41.24	41.33	41.34	41.41	41.53	42.04	42.37
110	-	-	49.57	50.20	50.79	51.49	51.94	53.14	53.75
130	-	-	-	-	59.73	60.65	61.22	62.69	63.43
140	-	-	-	-	-	66.36	66.92	68.37	69.12
150	-	-	-	-	-	-	74.10	75.45	76.14
154	-	-	-	-	-	-	-	78.79	79.47

Mass flow in lbs/h

70	1 139	1 428	1 765	2 159	2 617	3 149	-	-	-
90	1 109	1 402	1 742	2 138	2 598	3 130	3 425	4 080	4 367
110	-	-	1 704	2 100	2 558	3 088	3 382	4 033	4 319
130	-	-	-	-	2 501	3 026	3 317	3 963	4 246
140	-	-	-	-	-	2 989	3 279	3 920	4 201
150	-	-	-	-	-	-	3 236	3 872	4 152
154	-	-	-	-	-	-	-	3 852	4 131

Energy Efficiency Ratio (E.E.R.)

70	9.25	11.36	13.85	16.81	20.34	24.58	-	-	-
90	6.18	7.83	9.74	11.94	14.49	17.46	19.12	22.91	24.61
110	-	-	6.95	8.62	10.53	12.71	13.92	16.62	17.81
130	-	-	-	-	7.37	8.96	9.84	11.78	12.63
140	-	-	-	-	-	7.35	8.09	9.73	10.45
150	-	-	-	-	-	-	6.58	7.96	8.57
154	-	-	-	-	-	-	-	7.35	7.92

Nominal performance at to = 45 °F, tc = 130 °F

Cooling capacity	225 028	Btu/h	Current consumption	61.22	A
Power input	22 875	W	Mass flow	3 317	lbs/h
E.E.R.	9.84				

Pressure switch settings

Maximum HP switch setting	653	psi(g)
Minimum LP switch setting	22	psi(g)
LP pump down setting	33	psi(g)

T 0 : Evaporating temperature at dew point

T C : Condensing temperature at dew point

Rating conditions : Superheat = 20 °F , Subcooling = 15 °F

Tolerance according EN12900

Sound power data

Sound power level		dB(A)
With acoustic hood		dB(A)

Danfoss can accept no responsibility for possible errors in catalogues, brochures and other printed material. Danfoss reserves the right to alter its products without notice. This also applies to products already on order provided that such alternations can be made without subsequential changes being necessary in specifications already agreed. All trademarks in this material are property of the respective companies. Danfoss and the Danfoss logotype and Performer are trademarks of Danfoss A/S. All rights reserved.

Performance data at 80 Hz, ARI rating conditions
R410A

Cond. temp. in °F (tc)	Evaporating temperature in °F (to)								
	-10	0	10	20	30	40	45	55	59

Cooling capacity in Btu/h

70	108 834	136 392	169 661	209 346	256 153	310 783	-	-	-
90	94 399	120 712	151 975	188 902	232 206	282 599	310 676	373 033	400 418
110	-	-	134 285	167 741	206 837	252 299	277 643	334 008	358 801
130	-	-	-	-	178 543	218 488	240 820	290 664	312 668
140	-	-	-	-	-	200 286	221 077	267 624	288 231
150	-	-	-	-	-	-	201 603	245 156	264 513
154	-	-	-	-	-	-	-	237 267	256 245

Power input in W

70	11 796	12 060	12 332	12 580	12 773	12 880	-	-	-
90	15 214	15 381	15 607	15 863	16 115	16 333	16 419	16 525	16 537
110	-	-	19 213	19 401	19 639	19 894	20 018	20 239	20 312
130	-	-	-	-	24 080	24 298	24 423	24 685	24 789
140	-	-	-	-	-	27 047	27 159	27 414	27 522
150	-	-	-	-	-	-	30 372	30 601	30 707
154	-	-	-	-	-	-	-	32 026	32 128

Current consumption in A

70	32.00	32.12	31.70	30.93	29.99	29.07	-	-	-
90	42.86	43.85	44.33	44.49	44.51	44.57	44.68	45.16	45.49
110	-	-	52.87	53.61	54.23	54.93	55.37	56.53	57.13
130	-	-	-	-	63.81	64.79	65.38	66.87	67.61
140	-	-	-	-	-	70.98	71.58	73.10	73.86
150	-	-	-	-	-	-	79.36	80.82	81.56
154	-	-	-	-	-	-	-	84.45	85.17

Mass flow in lbs/h

70	1 217	1 526	1 886	2 305	2 794	3 360	-	-	-
90	1 187	1 500	1 863	2 286	2 775	3 341	3 655	4 350	4 655
110	-	-	1 826	2 248	2 737	3 300	3 612	4 304	4 607
130	-	-	-	-	2 681	3 240	3 550	4 235	4 536
140	-	-	-	-	-	3 204	3 512	4 194	4 492
150	-	-	-	-	-	-	3 470	4 147	4 444
154	-	-	-	-	-	-	-	4 127	4 423

Energy Efficiency Ratio (E.E.R.)

70	9.23	11.31	13.76	16.64	20.05	24.13	-	-	-
90	6.20	7.85	9.74	11.91	14.41	17.30	18.92	22.57	24.21
110	-	-	6.99	8.65	10.53	12.68	13.87	16.50	17.66
130	-	-	-	-	7.41	8.99	9.86	11.77	12.61
140	-	-	-	-	-	7.41	8.14	9.76	10.47
150	-	-	-	-	-	-	6.64	8.01	8.61
154	-	-	-	-	-	-	-	7.41	7.98

Nominal performance at to = 45 °F, tc = 130 °F

Cooling capacity	240 820	Btu/h	Current consumption	65.38	A
Power input	24 423	W	Mass flow	3 550	lbs/h
E.E.R.	9.86				

Pressure switch settings

Maximum HP switch setting	653	psi(g)
Minimum LP switch setting	22	psi(g)
LP pump down setting	33	psi(g)

T 0 : Evaporating temperature at dew point

T C : Condensing temperature at dew point

Rating conditions : Superheat = 20 °F , Subcooling = 15 °F

Tolerance according EN12900

Sound power data

Sound power level		dB(A)
With acoustic hood		dB(A)

Danfoss can accept no responsibility for possible errors in catalogues, brochures and other printed material. Danfoss reserves the right to alter its products without notice. This also applies to products already on order provided that such alternations can be made without subsequential changes being necessary in specifications already agreed. All trademarks in this material are property of the respective companies. Danfoss and the Danfoss logotype and Performer are trademarks of Danfoss A/S. All rights reserved.

Performance data at 85 Hz, ARI rating conditions
R410A

Cond. temp. in °F (tc)	Evaporating temperature in °F (to)								
	-10	0	10	20	30	40	45	55	59

Cooling capacity in Btu/h

70	115 561	144 963	180 416	222 653	272 406	330 404	-	-	-
90	100 313	128 414	161 738	201 026	247 018	300 453	330 192	396 175	425 127
110	-	-	143 128	178 783	220 339	268 548	295 381	354 976	381 160
130	-	-	-	-	190 537	232 974	256 642	309 362	332 596
140	-	-	-	-	-	213 762	235 826	285 097	306 865
150	-	-	-	-	-	-	215 241	261 407	281 872
154	-	-	-	-	-	-	-	253 088	273 161

Power input in W

70	12 592	12 896	13 217	13 523	13 779	13 949	-	-	-
90	16 160	16 358	16 628	16 936	17 247	17 527	17 644	17 813	17 850
110	-	-	20 406	20 640	20 931	21 245	21 399	21 682	21 779
130	-	-	-	-	25 577	25 848	26 001	26 321	26 449
140	-	-	-	-	-	28 714	28 852	29 163	29 294
150	-	-	-	-	-	-	32 194	32 477	32 605
154	-	-	-	-	-	-	-	33 956	34 079

Current consumption in A

70	35.06	35.45	35.23	34.59	33.74	32.88	-	-	-
90	45.65	46.88	47.52	47.76	47.80	47.85	47.94	48.36	48.67
110	-	-	56.24	57.08	57.74	58.42	58.83	59.91	60.48
130	-	-	-	-	68.00	69.04	69.63	71.10	71.83
140	-	-	-	-	-	75.76	76.39	77.95	78.71
150	-	-	-	-	-	-	84.80	86.38	87.15
154	-	-	-	-	-	-	-	90.32	91.09

Mass flow in lbs/h

70	1 292	1 621	2 005	2 452	2 972	3 573	-	-	-
90	1 261	1 596	1 983	2 432	2 952	3 552	3 884	4 620	4 942
110	-	-	1 946	2 396	2 916	3 513	3 843	4 574	4 894
130	-	-	-	-	2 861	3 455	3 783	4 508	4 825
140	-	-	-	-	-	3 419	3 746	4 468	4 783
150	-	-	-	-	-	-	3 704	4 422	4 736
154	-	-	-	-	-	-	-	4 403	4 715

Energy Efficiency Ratio (E.E.R.)

70	9.18	11.24	13.65	16.46	19.77	23.69	-	-	-
90	6.21	7.85	9.73	11.87	14.32	17.14	18.71	22.24	23.82
110	-	-	7.01	8.66	10.53	12.64	13.80	16.37	17.50
130	-	-	-	-	7.45	9.01	9.87	11.75	12.58
140	-	-	-	-	-	7.44	8.17	9.78	10.48
150	-	-	-	-	-	-	6.69	8.05	8.65
154	-	-	-	-	-	-	-	7.45	8.02

Nominal performance at to = 45 °F, tc = 130 °F

Cooling capacity	256 642	Btu/h	Current consumption	69.63	A
Power input	26 001	W	Mass flow	3 783	lbs/h
E.E.R.	9.87				

Pressure switch settings

Maximum HP switch setting	653	psi(g)
Minimum LP switch setting	22	psi(g)
LP pump down setting	33	psi(g)

T 0 : Evaporating temperature at dew point

T C : Condensing temperature at dew point

Rating conditions : Superheat = 20 °F , Subcooling = 15 °F

Tolerance according EN12900

Sound power data

Sound power level		dB(A)
With acoustic hood		dB(A)

Danfoss can accept no responsibility for possible errors in catalogues, brochures and other printed material. Danfoss reserves the right to alter its products without notice. This also applies to products already on order provided that such alternations can be made without subsequential changes being necessary in specifications already agreed. All trademarks in this material are property of the respective companies. Danfoss and the Danfoss logotype and Performer are trademarks of Danfoss A/S. All rights reserved.

Performance data at 90 Hz, ARI rating conditions
R410A

Cond. temp. in °F (tc)	Evaporating temperature in °F (to)								
	-10	0	10	20	30	40	45	55	59

Cooling capacity in Btu/h

70	122 047	153 364	191 082	235 951	288 724	350 151	-	-	-
90	105 982	135 940	171 391	213 098	261 821	318 320	349 722	419 307	449 807
110	-	-	151 862	189 782	233 839	284 804	313 119	375 895	403 437
130	-	-	-	-	202 540	247 496	272 498	328 046	352 476
140	-	-	-	-	-	227 276	250 619	302 579	325 477
150	-	-	-	-	-	-	228 917	277 681	299 228
154	-	-	-	-	-	-	-	268 931	290 078

Power input in W

70	13 400	13 746	14 122	14 492	14 815	15 056	-	-	-
90	17 109	17 341	17 658	18 024	18 400	18 749	18 902	19 138	19 201
110	-	-	21 609	21 893	22 243	22 622	22 811	23 161	23 284
130	-	-	-	-	27 094	27 424	27 609	27 994	28 148
140	-	-	-	-	-	30 407	30 576	30 949	31 106
150	-	-	-	-	-	-	34 045	34 388	34 539
154	-	-	-	-	-	-	-	35 919	36 067

Current consumption in A

70	38.33	39.05	39.07	38.61	37.88	37.09	-	-	-
90	48.49	49.99	50.81	51.14	51.22	51.24	51.30	51.65	51.91
110	-	-	59.66	60.61	61.30	61.94	62.31	63.29	63.80
130	-	-	-	-	72.30	73.38	73.97	75.39	76.08
140	-	-	-	-	-	80.68	81.35	82.92	83.67
150	-	-	-	-	-	-	90.45	92.13	92.93
154	-	-	-	-	-	-	-	96.40	97.21

Mass flow in lbs/h

70	1 364	1 714	2 123	2 598	3 150	3 788	-	-	-
90	1 332	1 689	2 101	2 578	3 129	3 763	4 114	4 890	5 229
110	-	-	2 065	2 544	3 094	3 725	4 074	4 843	5 179
130	-	-	-	-	3 042	3 671	4 017	4 780	5 113
140	-	-	-	-	-	3 635	3 981	4 742	5 073
150	-	-	-	-	-	-	3 939	4 698	5 028
154	-	-	-	-	-	-	-	4 678	5 008

Energy Efficiency Ratio (E.E.R.)

70	9.11	11.16	13.53	16.28	19.49	23.26	-	-	-
90	6.19	7.84	9.71	11.82	14.23	16.98	18.50	21.91	23.43
110	-	-	7.03	8.67	10.51	12.59	13.73	16.23	17.33
130	-	-	-	-	7.48	9.02	9.87	11.72	12.52
140	-	-	-	-	-	7.47	8.20	9.78	10.46
150	-	-	-	-	-	-	6.72	8.08	8.66
154	-	-	-	-	-	-	-	7.49	8.04

Nominal performance at to = 45 °F, tc = 130 °F

Cooling capacity	272 498	Btu/h	Current consumption	73.97	A
Power input	27 609	W	Mass flow	4 017	lbs/h
E.E.R.	9.87				

Pressure switch settings

Maximum HP switch setting	653	psi(g)
Minimum LP switch setting	22	psi(g)
LP pump down setting	33	psi(g)

T 0 : Evaporating temperature at dew point

T C : Condensing temperature at dew point

Rating conditions : Superheat = 20 °F , Subcooling = 15 °F

Tolerance according EN12900

Sound power data

Sound power level		dB(A)
With acoustic hood		dB(A)

Danfoss can accept no responsibility for possible errors in catalogues, brochures and other printed material. Danfoss reserves the right to alter its products without notice. This also applies to products already on order provided that such alternations can be made without subsequential changes being necessary in specifications already agreed. All trademarks in this material are property of the respective companies. Danfoss and the Danfoss logotype and Performer are trademarks of Danfoss A/S. All rights reserved.