

# Catalogue Annex - R22 Compressors

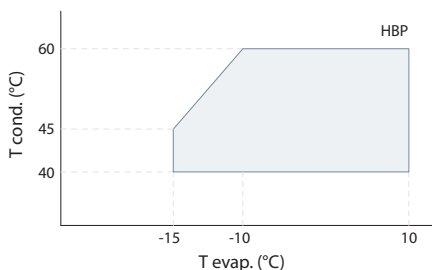
## R22 HMBP | HBP • 50 Hz Compressors

MODEL	SP CODE	DISPLACEMENT		APPLICATION	CPR COOLING	VOLTAGE FREQUENCY	MOTOR	STARTING	EXPANSION	REFRIGERATION CAPACITY						WEIGHT	DESIGN	
		cm <sup>3</sup>	hp							COP in W/W Evaporating Temperature °C								
										CECOMAF (W)			ASHRAE					
										-15	5		10	7.2				
	W	COP		kcal/h	W	COP	Kg											
L45TN	123B5501	4.50	1/5	HMBP	F	220-240V 50Hz	CSIR	R	C-V	206	<b>497</b>	<b>1.68</b>	593	<b>500</b>	<b>579</b>	<b>1.91</b>	9.5	Lc
L45TN	123B5501	4.50	1/5	HMBP	F	200-220/230V 50/60Hz	CSIR	R	C-V	217	<b>516</b>	<b>1.72</b>	619	<b>520</b>	<b>602</b>	<b>1.95</b>	9.5	Lc
L57TN	123B5503	5.68	1/5	HMBP	F	200-220/230V 50/60Hz	CSIR	R	C-V	262	<b>626</b>	<b>1.76</b>	748	<b>630</b>	<b>729</b>	<b>1.98</b>	9.5	Lc
L57TNa	123B5504	5.68	1/5	HMBP	F	220-240V 50Hz	RSIR	R	C	255	<b>612</b>	<b>1.72</b>	729	<b>615</b>	<b>712</b>	<b>1.93</b>	9.5	Lc
L57TNb	123B5505	5.68	1/5	HMBP	F	220-240V 50Hz	CSIR	R	C-V	255	<b>612</b>	<b>1.72</b>	729	<b>615</b>	<b>712</b>	<b>1.93</b>	9.5	Lc
L76TN	123B5506	7.57	3/8	HMBP	F	220-240V 50Hz	CSIR	R	C-V	348	<b>816</b>	<b>1.72</b>	971	<b>820</b>	<b>949</b>	<b>1.95</b>	10.2	Ld
L76TN	123B5506	7.57	3/8	HMBP	F	200-220/230V 50/60Hz	CSIR	R	C-V	348	<b>833</b>	<b>1.80</b>	1000	<b>840</b>	<b>972</b>	<b>2.04</b>	10.2	Ld
L88TN	123B5508	8.86	3/8	HMBP	F	220-240V 50Hz	CSIR	R	C-V	416	<b>975</b>	<b>1.74</b>	1161	<b>980</b>	<b>1134</b>	<b>1.97</b>	10.6	Ld
L88TN	123B5508	8.86	3/8	HMBP	F	200-220/230V 50/60Hz	CSIR	R	C-V	416	<b>975</b>	<b>1.75</b>	1161	<b>980</b>	<b>1134</b>	<b>1.97</b>	10.6	Ld
P12TN	123B5510	12.05	1/2	HMBP	F	220-240V 50Hz	CSR	R	C-V	537	<b>1312</b>	<b>2.00</b>	1574	<b>1323</b>	<b>1531</b>	<b>2.26</b>	12.3	Pd
X16TN	123B5711	16.03	5/8	HBP	F	200-220/230V 50/60Hz	CSR	R	C-V	765	<b>1785</b>	<b>2.04</b>	2094	<b>1782</b>	<b>2063</b>	<b>2.30</b>	16.7	Xd
X18TN	123B5712	18.40	3/4	HBP	F	200-220/230V 50/60Hz	CSR	R	C-V	895	<b>2079</b>	<b>2.11</b>	2438	<b>2075</b>	<b>2402</b>	<b>2.40</b>	16.7	Xd
S18TN	123B5513	18.10	3/4	HMBP	F	220-240V 50Hz	CSR	R	C-V	755	<b>2022</b>	<b>2.16</b>	2454	<b>2050</b>	<b>2373</b>	<b>2.46</b>	21.8	Sc
S18TN	123B5513	18.10	3/4	HMBP	F	200-220/230V 50/60Hz	CSR	R	C-V	755	<b>2022</b>	<b>2.09</b>	2454	<b>2050</b>	<b>2373</b>	<b>2.38</b>	21.8	Sc
S22TN	123B5515	21.77	7/8	HMBP	F	220-240V 50Hz	CSR	R	C-V	890	<b>2460</b>	<b>2.28</b>	3001	<b>2500</b>	<b>2894</b>	<b>2.60</b>	22.7	Sc
S26TN	123B5516	25.93	1	HMBP	F	220-240V 50Hz	CSR	R	C-V	1183	<b>3027</b>	<b>2.20</b>	3623	<b>3051</b>	<b>3531</b>	<b>2.50</b>	22.7	Sd

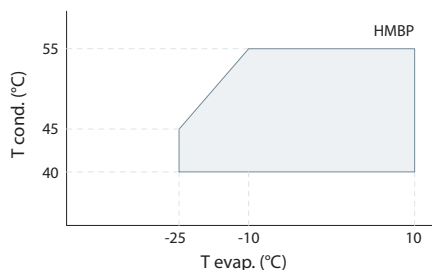
## R22 HMBP | HBP • 60 Hz Compressors

MODEL	SP CODE	DISPLACEMENT		APPLICATION	CPR COOLING	VOLTAGE FREQUENCY	MOTOR	STARTING	EXPANSION	REFRIGERATION CAPACITY						WEIGHT	DESIGN	
		cm <sup>3</sup>	hp							COP in W/W Evaporating Temperature °C								
										CECOMAF (W)			ASHRAE					
										-15	5		10	7.2				
	W	COP		kcal/h	W	COP	Kg											
L45TN	123B5501	4.50	1/5	HMBP	F	200-220/230V 50/60Hz	CSIR	R	C-V	260	<b>619</b>	<b>1.69</b>	742	<b>624</b>	<b>722</b>	<b>1.91</b>	9.5	Lc
L57TN	123B5503	5.68	1/5	HMBP	F	200-220/230V 50/60Hz	CSIR	R	C-V	315	<b>751</b>	<b>1.70</b>	898	<b>756</b>	<b>875</b>	<b>1.91</b>	9.5	Lc
L76TN	123B5506	7.57	3/8	HMBP	F	115-127V 60Hz	CSIR	R	C-V	418	<b>1000</b>	<b>1.79</b>	1200	<b>1008</b>	<b>1167</b>	<b>2.02</b>	10.2	Ld
L76TN	123B5506	7.57	3/8	HMBP	F	200-220/230V 50/60Hz	CSIR	R	C-V	418	<b>1000</b>	<b>1.79</b>	1200	<b>1008</b>	<b>1167</b>	<b>2.02</b>	10.2	Ld
L88TN	123B5508	8.86	3/8	HMBP	F	115-127V 60Hz	CSIR	R	C-V	499	<b>1170</b>	<b>1.69</b>	1394	<b>1176</b>	<b>1361</b>	<b>1.90</b>	10.6	Ld
L88TN	123B5508	8.86	3/8	HMBP	F	200-220/230V 50/60Hz	CSIR	R	C-V	499	<b>1170</b>	<b>1.69</b>	1394	<b>1176</b>	<b>1361</b>	<b>1.90</b>	10.6	Ld
P12TN	123B5510	12.05	1/2	HMBP	F	115V 60Hz	CSR	R	C-V	644	<b>1575</b>	<b>1.94</b>	1890	<b>1588</b>	<b>1838</b>	<b>2.20</b>	12.0	Pd
P12TN	123B5510	12.05	1/2	HMBP	F	230V 60Hz	CSR	R	C-V	644	<b>1575</b>	<b>1.95</b>	1890	<b>1588</b>	<b>1838</b>	<b>2.23</b>	12.3	Pd
X16TN	123B5711	16.03	5/8	HBP	F	200-220/230V 50/60Hz	CSR	R	C-V	905	<b>2085</b>	<b>2.00</b>	2437	<b>2078</b>	<b>2405</b>	<b>2.25</b>	16.7	Xd
X18TN	123B5712	18.40	3/4	HBP	F	200-220/230V 50/60Hz	CSR	R	C-V	1056	<b>2426</b>	<b>2.12</b>	2840	<b>2420</b>	<b>2801</b>	<b>2.41</b>	16.7	Xd
S18TN	123B5513	18.10	3/4	HMBP	F	200-220/230V 50/60Hz	CSR	R	C-V	906	<b>2426</b>	<b>2.01</b>	2945	<b>2460</b>	<b>2847</b>	<b>2.29</b>	21.8	Sc
S26TN	123B5516	25.93	1	HMBP	F	230V 60Hz	CSR	R	C-V	1419	<b>3633</b>	<b>2.12</b>	4348	<b>3661</b>	<b>4237</b>	<b>2.36</b>	22.7	Sd

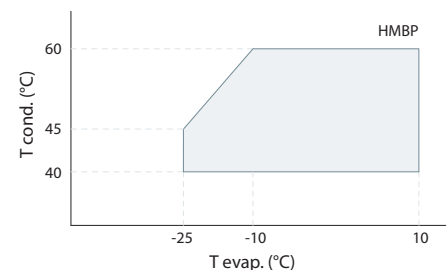
R22 HBP (X range)



R22 HMBP (L, P range)

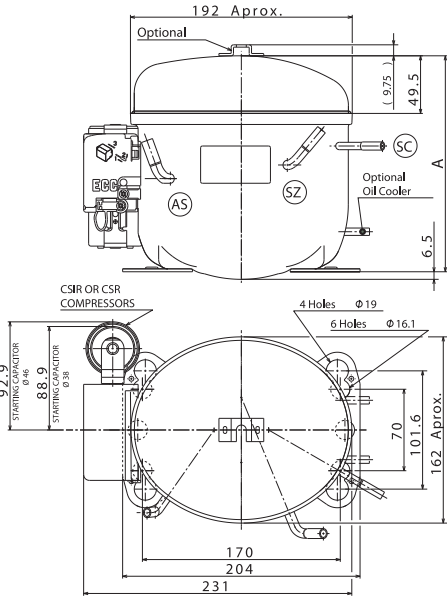


R22 HMBP (S range)



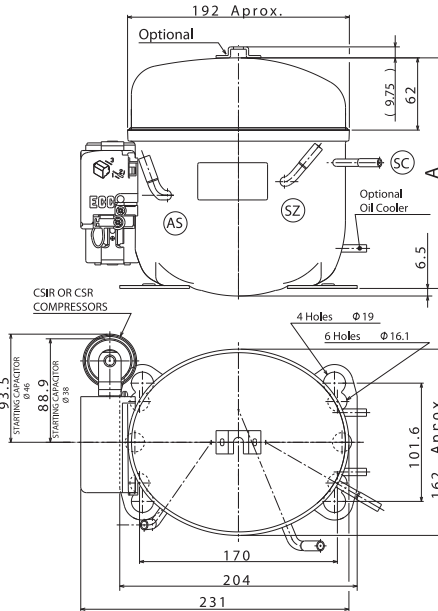
# Compressor Dimensional Drawings

## L range



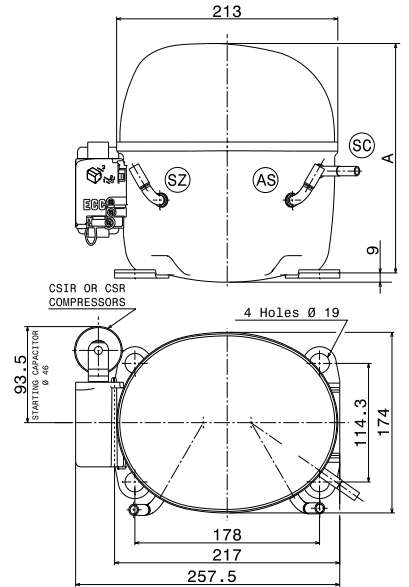
	A (mm)	LEGEND
Lb	175	AS Suction/Service
Lc	185.6	SC Discharge
Ld	198	SZ Service/Suction

## P range



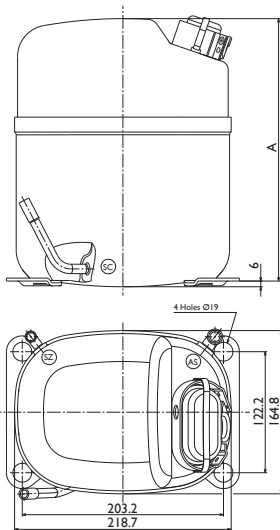
	A (mm)	LEGEND
Pc	198.1	AS Suction/Service
Pd	210.5	SC Discharge
		SZ Service/Suction

## X range



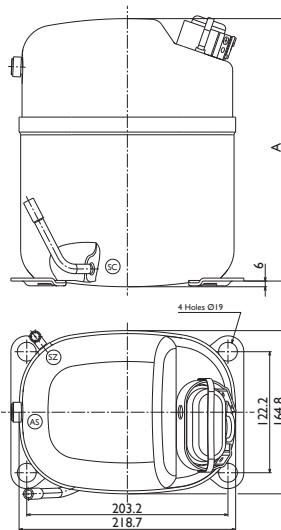
	A (mm)	LEGEND
Xc	215	AS Suction/Service
Xd	221	SC Discharge
		SZ Service/Suction

## S range (Tube)



	A (mm)	LEGEND
Sb	252	AS Suction/Service
Sc	265	SC Discharge
Sd	276	SZ Service/Suction

## S range (Valve)



	A (mm)	LEGEND
Sb	252	AS Suction/Service
Sc	265	SC Discharge
Sd	276	SZ Service/Suction

Conditions			
CECOMAF		ASHRAE	
LBP	HMBP/HBP	LBP	HMBP/HBP

Evaporating temperature °C	-25	5	-23.3	7.2
Condensing temperature °C	55	55	55	55
Liquid temperature °C	55	55	32	46
Suction temperature °C	32	32	32	35
Ambient temperature °C	32	32	32	35

S compressors can be provided with tube or valve