

Datasheets

DLE6.5CN Energy-optimized LBP/MBP R290 115-127V 60Hz

General

Code number	102H3792
Code number (pre-assembled CSIR start equipment)	102H3793
Approvals	UL984
Compressors on pallet	100
Compressors on pallet (with CSIR start equipment)	80

Application

Application		LBP/MBP	
		Hz	
Frequency	Hz	50	60
Evaporating temperature	°F	-	-31 to 45
Voltage range	V	-	95 - 135
Max. condensing temperature continuous (short)	°F	-	131 (149)
Max. winding temperature continuous (short)	°F	-	257 (275)

Cooling requirements

Frequency	Hz	50			60		
		LBP	MBP	HBP	LBP	MBP	HBP
90°F		-	-	-	F ₂	F ₂	-
100°F		-	-	-	F ₂	F ₂	-
110°F		-	-	-	F ₂	F ₂	-

Remarks on application: For evaporation temperatures higher than 32 °F do not run compressor at condensing temperatures higher 122 °F in steady state operation.

Motor

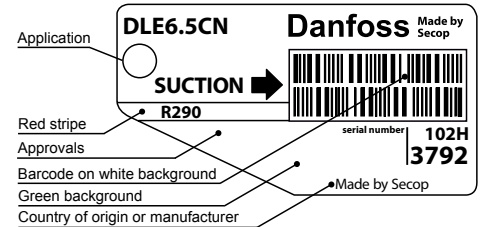
Motor type		CSIR/RSIR/RSCR	
LRA (rated after 4 sec. UL984), HST LST	A	22.8	16.7
Cut in Current, HST LST	A	22.8	29.0
Resistance, main start winding (77°F)	Ω	2.5	5.0

Design

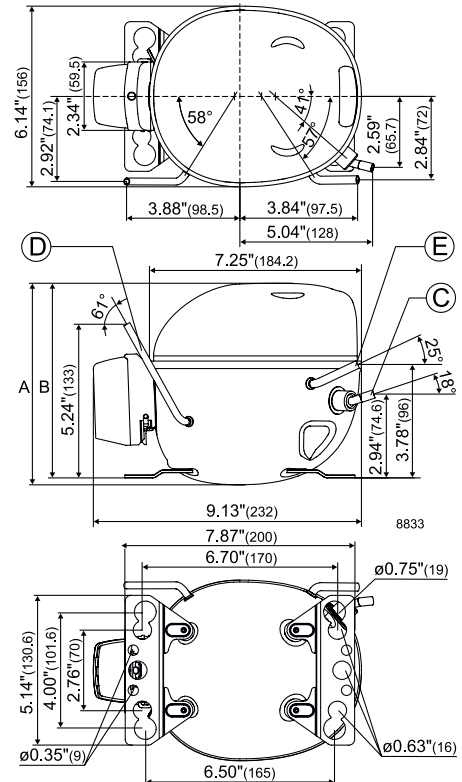
Displacement	cu.in	0.40
Oil quantity (type)	fl.oz.	7.8 (polyolester)
Maximum refrigerant charge	oz.	5.3
Free gas volume in compressor	fl.oz.	44.8
Weight without electrical equipment	lbs.	18.7

Dimensions

Height	inch	A	6.90
		B	6.64
		B1	-
		B2	-
Suction connector	location, I.D. in. angle	C	0.320-0.327 18°
	material comment		Copper Rubber plug
Process connector	location, I.D. in. angle	D	0.252-0.259 60°
	material comment		Copper Rubber plug
Discharge connector	location, I.D. in. angle	E	0.252-0.259 25°
	material comment		Copper Rubber plug
Oil cooler connector	location, I.D. in. angle	F	-
	material comment		-
Remarks:			



- S = Static cooling normally sufficient
- O = Oil cooling
- F₁ = Fan cooling 1.5 m/s (compressor compartment temperature equal to ambient temperature)
- F₂ = Fan cooling 3.0 m/s necessary
- SG = Suction gas cooling normally sufficient
- = not applicable in this area



ASHRAE LBP

 115V, 60Hz, fan cooling F₂

Evap. temp. in °F	-49	-40	-30	-20	-13	-10	0	10	14	20	30	32	40	41	45	50	59
Capacity in BTU/h			722	984	1188	1282	1631	2048	2238	2551	3156	3291	3881	3961	4294		
Power cons. in W			191	221	242	251	281	311	323	341	372	378	403	406	419		
Current cons. in A			2.83	2.97	3.09	3.14	3.33	3.55	3.63	3.77	4.02	4.07	4.27	4.30	4.40		
EER in BTU/Wh			3.78	4.46	4.91	5.11	5.81	6.59	6.92	7.47	8.48	8.7	9.63	9.75	10.3		

ASHRAE MBP/HBP

 115V, 60Hz, fan cooling F₂

Evap. temp. in °F	-49	-40	-30	-20	-13	-10	0	10	14	20	30	32	40	41	45	50	59
Capacity in BTU/h			645	880	1061	1145	1456	1827	1996	2274	2810	2930	3452	3522	3817		
Power cons. in W			189	219	239	248	278	308	320	338	368	374	398	401	413		
Current cons. in A			2.83	2.97	3.09	3.14	3.33	3.55	3.63	3.77	4.02	4.07	4.27	4.30	4.40		
EER in BTU/Wh			3.41	4.02	4.43	4.61	5.24	5.94	6.24	6.73	7.64	7.84	8.67	8.78	9.23		

EN 12900 LBP

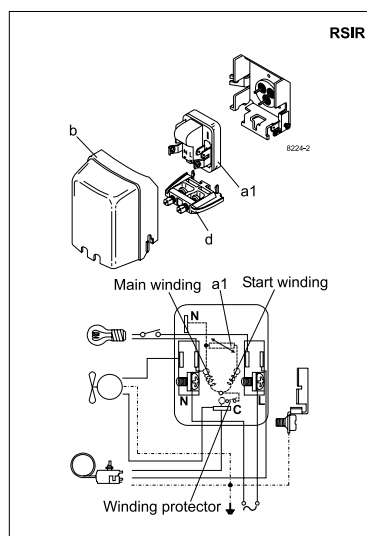
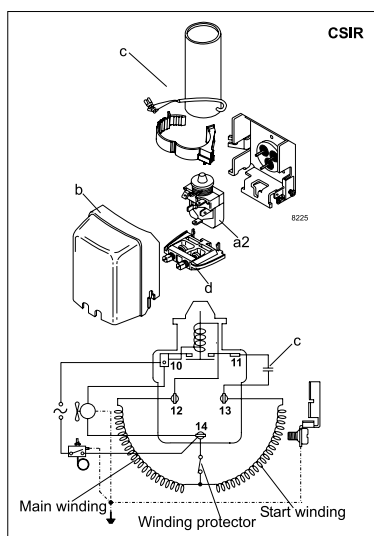
 115V, 60Hz, fan cooling F₂

Evap. temp. in °F	-49	-40	-30	-20	-13	-10	0	10	14	20	30	32	40	41	45	50	59
Capacity in W			223	295	353	380	479	598	651	740	909	946	1109	1131	1222		
Power cons. in W			195	220	236	243	267	291	300	314	337	342	361	363	373		
Current cons. in A			2.81	2.92	3.00	3.04	3.18	3.33	3.39	3.49	3.65	3.69	3.82	3.84	3.91		
COP in W/W			1.14	1.35	1.49	1.56	1.79	2.06	2.17	2.35	2.69	2.77	3.07	3.11	3.28		

EN 12900 MBP

 115V, 60Hz, fan cooling F₂

Evap. temp. in °F	-49	-40	-30	-20	-13	-10	0	10	14	20	30	32	40	41	45	50	59
Capacity in W			204	272	325	350	443	553	604	686	844	879	1033	1053	1139		
Power cons. in W			198	224	243	251	277	303	313	329	356	361	382	385	396		
Current cons. in A			2.82	2.94	3.03	3.08	3.23	3.40	3.47	3.58	3.76	3.8	3.96	3.98	4.06		
COP in W/W			1.03	1.21	1.34	1.40	1.60	1.83	1.93	2.08	2.37	2.44	2.70	2.73	2.88		



Accessories for	DLE6.5CN	Figure	Code number
ePTC starting device	1/4 in. spade connectors	a1	103N0058 *)
Starting relay	1/4 in. spade connectors	a2	117U7013
Start. capacitor 240 µF	1/4 in. spade connectors	c	117U5023
Cover		b	103N0492
Cord relief		d	103N1010

*) Remarks: RSIR and RSCR option available in 4th quarter 2015

Test conditions	EN 12900		ASHRAE	
	LBP	MBP	LBP	MBP
Condensing temperature	104°F	113°F	130°F	130°F
Ambient temperature	90°F	90°F	90°F	90°F
Suction gas temperature	68°F	68°F	90°F	95°F
Liquid temperature	no subcooling		90°F	115°F

Mounting accessories	Code number
Bolt joint for one comp. Ø: 3/4 in.	118-1949
Bolt joint for one comp. Ø: 5/8 in.	118-1946
Snap-on for one comp. Ø: 5/8 in.	118-1947

ASHRAE LBP

115V, 60Hz, RC 15 µF, ePTC consumption incl., fan cooling F₂

Evap. temp. in °F	-49	-40	-30	-20	-13	-10	0	10	14	20	30	32	40	41	45	50	59
Capacity in BTU/h			736	1000	1206	1302	1656	2077	2267	2580	3181	3315	3896	3974	4301		
Power cons. in W			182	210	229	238	266	294	305	321	349	354	376	379	389		
Current cons. in A			2.68	2.82	2.93	2.98	3.16	3.35	3.43	3.55	3.77	3.81	3.99	4.01	4.10		
EER in BTU/Wh			4.05	4.77	5.26	5.48	6.23	7.07	7.44	8.03	9.12	9.35	10.4	10.5	11.0		

ASHRAE MBP/HBP

115V, 60Hz, RC 15 µF, ePTC consumption incl., fan cooling F₂

Evap. temp. in °F	-49	-40	-30	-20	-13	-10	0	10	14	20	30	32	40	41	45	50	59
Capacity in BTU/h			658	894	1078	1163	1478	1853	2022	2300	2833	2951	3465	3534	3823		
Power cons. in W			180	208	227	235	263	291	302	318	345	350	371	374	385		
Current cons. in A			2.68	2.82	2.93	2.98	3.16	3.35	3.43	3.55	3.77	3.81	3.99	4.01	4.10		
EER in BTU/Wh			3.66	4.31	4.75	4.94	5.62	6.38	6.71	7.23	8.21	8.43	9.33	9.45	9.94		

EN 12900 LBP

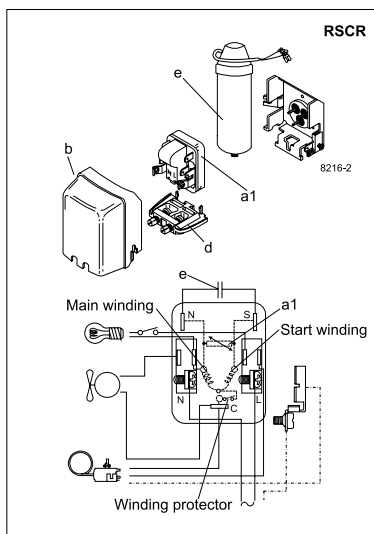
115V, 60Hz, RC 15 µF, ePTC consumption incl., fan cooling F₂

Evap. temp. in °F	-49	-40	-30	-20	-13	-10	0	10	14	20	30	32	40	41	45	50	59
Capacity in W			227	300	359	386	486	606	660	748	916	953	1113	1134	1224		
Power cons. in W			185	208	224	231	253	275	283	296	316	321	337	339	347		
Current cons. in A			2.67	2.77	2.85	2.88	3.01	3.15	3.20	3.29	3.43	3.46	3.57	3.58	3.64		
COP in W/W			1.22	1.44	1.60	1.67	1.92	2.21	2.33	2.53	2.89	2.97	3.31	3.35	3.53		

EN 12900 MBP

115V, 60Hz, RC 15 µF, ePTC consumption incl., fan cooling F₂

Evap. temp. in °F	-49	-40	-30	-20	-13	-10	0	10	14	20	30	32	40	41	45	50	59
Capacity in W			208	276	331	356	450	561	611	694	851	886	1036	1057	1141		
Power cons. in W			188	213	230	237	262	286	296	310	334	338	357	359	368		
Current cons. in A			2.68	2.79	2.88	2.92	3.06	3.21	3.27	3.37	3.53	3.56	3.69	3.71	3.78		
COP in W/W			1.10	1.30	1.44	1.50	1.72	1.96	2.07	2.24	2.55	2.62	2.90	2.94	3.10		



Accessories for	DLE6.5CN	Figure	Code number
ePTC starting device	1/4 in. spade connectors	a1	103N0058 *)
Run capacitor 15 µF (optional)	1/4 in. spade connectors	e	117-7118 *)
Cover		b	103N0492
Cord relief		d	103N1010

*) Remarks: RSIR and RSCR option available in 4th quarter 2015

Test conditions	EN 12900		ASHRAE	
	LBP	MBP	LBP	MBP
Condensing temperature	104°F	113°F	130°F	130°F
Ambient temperature	90°F	90°F	90°F	90°F
Suction gas temperature	68°F	68°F	90°F	95°F
Liquid temperature	no subcooling		90°F	115°F

Mounting accessories	Code number
Bolt joint for one comp. Ø: 3/4 in.	118-1949
Bolt joint for one comp. Ø: 5/8 in.	118-1946
Snap-on for one comp. Ø: 5/8 in.	118-1947