

Datasheets

DLE6.5CN Energy-optimized LBP/MBP R290 220-240V 50Hz

General

Code number	102H4765
Approvals	EN 60335-2-34 w. Annex AA
Compressors on pallet	100

Application

Application	LBP/MBP			
	Hz	50	60	
Frequency	Hz	50	60	
Evaporating temperature	°C	-35 to 7.2	-	
Voltage range	V	198 to 254	-	
Max. condensing temperature continuous (short)	°C	55 (65)	-	
Max. winding temperature continuous (short)	°C	125 (135)	-	

Cooling requirements

Frequency	Hz	50			60		
		LBP	MBP	HBP	LBP	MBP	HBP
32°C		F ₂	F ₂	-	-	-	-
38°C		F ₂	F ₂	-	-	-	-
43°C		F ₂	F ₂	-	-	-	-

Remarks on application:
For evaporation temperatures higher than 0 °C do not run compressor at condensing temperatures higher 50 °C in steady state operation.

Motor

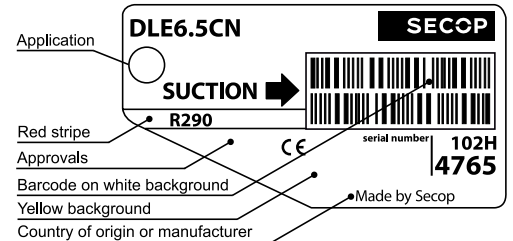
Motor type	CSIR/RSIR/RSCR		
LRA (rated after 4 sec. UL984), HST LST	A	9.3	7.3
Cut in Current, HST LST	A	9.3	11.5
Resistance, main start winding (25°C)	Ω	13.6	18.5

Design

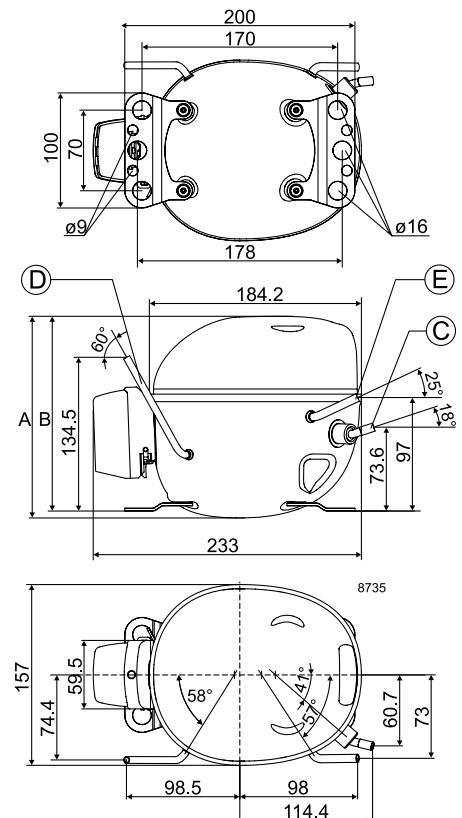
Displacement	cm ³	6.50
Oil quantity (type)	cm ³	230 (polyolester)
Maximum refrigerant charge	g	150
Free gas volume in compressor	cm ³	1325
Weight without electrical equipment	kg	8.6

Dimensions

Height	mm	A	175
		B	169
		B1	-
		B2	-
Suction connector	location/I.D. mm angle	C	8.2 18°
	material comment	Copper Rubber plug	
Process connector	location/I.D. mm angle	D	6.2 60°
	material comment	Copper Rubber plug	
Discharge connector	location/I.D. mm angle	E	6.2 25°
	material comment	Copper Rubber plug	
Oil cooler connector	location/I.D. mm angle	F	-
	material comment	-	
Connector tolerance	I.D. mm	±0.09	
Remarks:			



- S = Static cooling normally sufficient
- O = Oil cooling
- F₁ = Fan cooling 1.5 m/s (compressor compartment temperature equal to ambient temperature)
- F₂ = Fan cooling 3.0 m/s necessary
- SG = Suction gas cooling normally sufficient
- = not applicable in this area



EN 12900 LBP 220V, 50Hz, CSIR/RSIR, fan cooling F₂

Evap. temp. in °C	-45	-40	-35	-30	-25	-23.3	-20	-15	-10	-6.7	-5	0	5	7.2	10	15	20
Capacity in W			175	225	284	306	352	432	527	599	639	769	921	995			
Power cons. in W			154	170	188	194	206	223	241	252	257	272	286	292			
Current cons. in A			1.09	1.13	1.18	1.2	1.24	1.30	1.36	1.40	1.42	1.47	1.52	1.54			
COP in W/W			1.14	1.32	1.51	1.57	1.71	1.93	2.19	2.38	2.48	2.82	3.22	3.41			

EN 12900 MBP 220V, 50Hz, CSIR/RSIR, fan cooling F₂

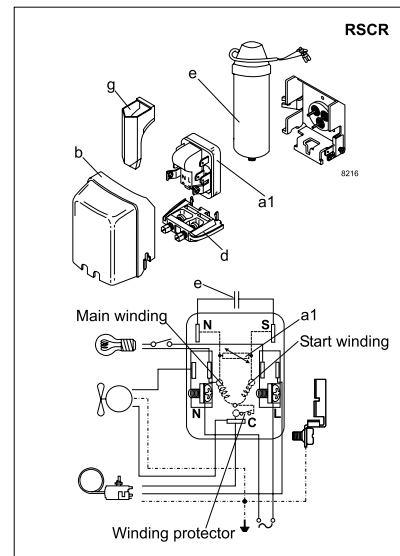
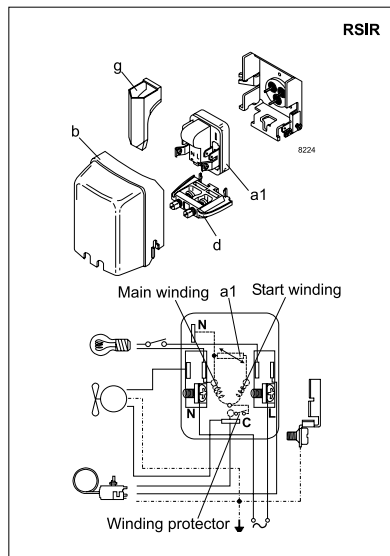
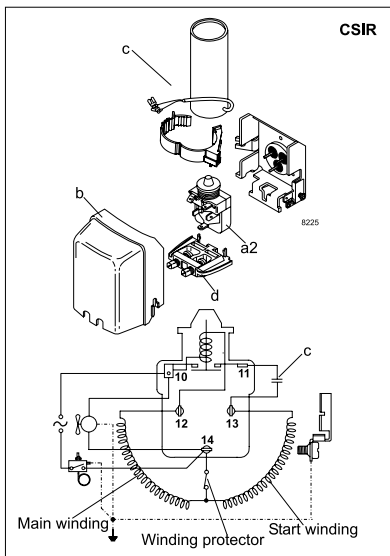
Evap. temp. in °C	-45	-40	-35	-30	-25	-23.3	-20	-15	-10	-6.7	-5	0	5	7.2	10	15	20
Capacity in W			161	211	266	287	330	405	493	559	596	716	856	925			
Power cons. in W			158	176	196	203	216	236	256	268	274	292	309	315			
Current cons. in A			1.10	1.15	1.21	1.23	1.27	1.34	1.41	1.46	1.48	1.55	1.61	1.63			
COP in W/W			1.02	1.19	1.36	1.41	1.53	1.72	1.93	2.08	2.17	2.45	2.77	2.93			

ASHRAE LBP 220V, 50Hz, CSIR/RSIR, fan cooling F₂

Evap. temp. in °C	-45	-40	-35	-30	-25	-23.3	-20	-15	-10	-6.7	-5	0	5	7.2	10	15	20
Capacity in W			168	228	292	315	363	446	541	612	652	782	934	1009			
Power cons. in W			151	174	198	206	222	246	270	285	293	315	336	344			
Current cons. in A			1.10	1.17	1.25	1.27	1.33	1.42	1.52	1.58	1.61	1.70	1.80	1.83			
COP in W/W			1.11	1.31	1.48	1.53	1.64	1.81	2.01	2.15	2.23	2.48	2.78	2.93			

ASHRAE MBP/HBP 220V, 50Hz, CSIR/RSIR, fan cooling F₂

Evap. temp. in °C	-45	-40	-35	-30	-25	-23.3	-20	-15	-10	-6.7	-5	0	5	7.2	10	15	20
Capacity in W			150	203	261	282	325	398	482	546	581	696	831	897			
Power cons. in W			150	172	196	204	219	243	267	282	289	311	332	340			
Current cons. in A			1.10	1.17	1.25	1.27	1.33	1.42	1.52	1.58	1.61	1.70	1.80	1.83			
COP in W/W			1.01	1.18	1.33	1.38	1.48	1.63	1.81	1.94	2.01	2.24	2.51	2.64			



Accessories for	DLE6.5CN	Figure	Code number
PTC starting device	6.3 mm spade connectors	a1	-
	4.8 mm spade connectors		-
ePTC starting device	4.8 mm spade connectors		103N0050
Starting relay	6.3 mm spade connectors	a2	117U7016
Start. capacitor 80 µF	6.3 mm spade connectors	c	117U5015
Cover		b	103N0491
Run capacitor 5 µF (optional)	6.3 mm spade connectors	e	-
	4.8 mm spade connectors		117-7129
Cord relief		d	103N1010
Protection screen for PTC		g	-

Test conditions	EN 12900		ASHRAE	
	LBP	MBP	LBP	MBP
Condensing temperature	40°C	45°C	54.4°C	54.4°C
Ambient temperature	32°C	32°C	32.2°C	35°C
Suction gas temperature	20°C	20°C	32.2°C	35°C
Liquid temperature	no subcooling		32.2°C	46.1°C

Mounting accessories	Code number	
Bolt joint for one comp.	Ø: 16 mm	118-1917
Bolt joint in quantities	Ø: 16 mm	118-1918
Snap-on in quantities	Ø: 16 mm	118-1919

Danfoss can accept no responsibility for possible errors in catalogues, brochures and other printed material. Danfoss reserves the right to alter its products without notice. This also applies to products already on order provided that such alterations can be made without subsequent changes being necessary in specifications already agreed. All trademarks in this material are property of the respective companies. Danfoss and the Danfoss logotype are trademarks of Danfoss A/S. All rights reserved.