

Data Sheet

Zero-Leakage Module

PVBZ

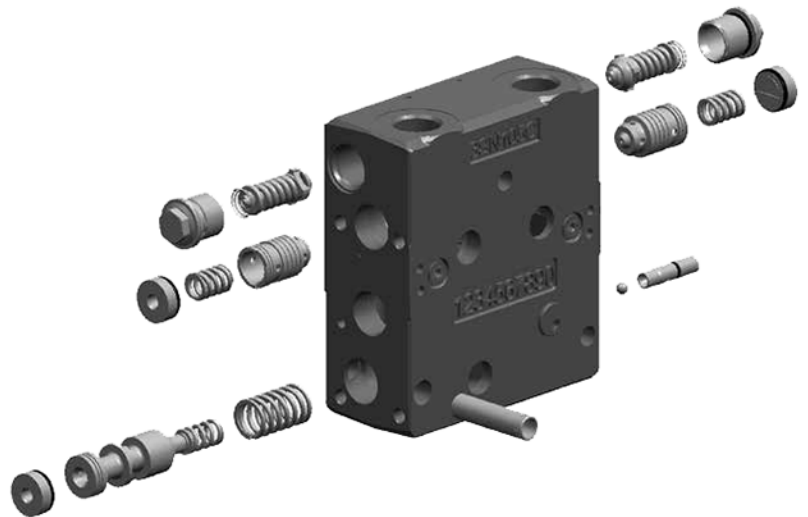
The PVBZ module with shock valves is a new addition to the proven PVG 32 valve family. The PVBZ is a basic module with up to 100 l/min work port flow and a work port pressure rating of 350 bar. The PVBZ is designed with integrated load-holding valves and shock valves.

The pilot-operated load-holding valves ensures outstanding performance, with a port leakage rating below 1 cc per minute.

Earlier versions of the PVBZ load compensated modules were developed for applications, where integrated pilot-operated check valves in the work ports are required to limit the port leakage down to zero.

The latest of the PVBZ modules have integrated shock valves, which remove any transient pressure peaks generated by an active load.

The new PVBZ basic module can be mixed with the wide range of T0-type* basic modules PVB.



Features

- Integrated shock/anti-cavitation valve (A- and B- port)
- Pilot operated check (POC) valves in A/B ports
- Load independent module (build in compensator)
- Separated pilot pressure tank line (T0)
- Can be combined with standard PVB modules (with T0)
- BSP/UNF port thread options

PVBZ with shock valve code numbers

Port Description	Code No.
G ½ BSP	11018390
7/8 - 14 UNF	11018391

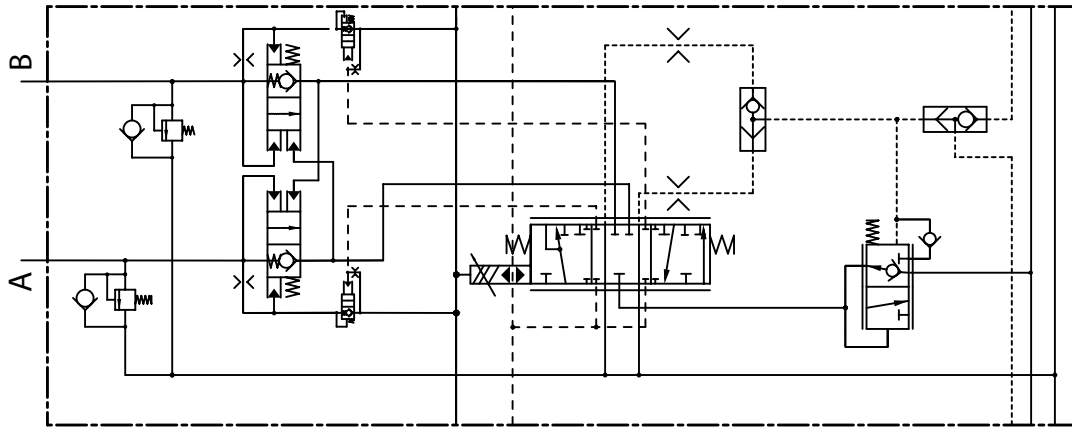
[Comprehensive technical literature online at powersolutions.danfoss.com](http://powersolutions.danfoss.com)

Available spools

- Only main spools with check valves can be used
- 4/3 versions in the flow range from 5–100 l/min
- 4/4 versions with float in the flow range from 5–100 l/min
- option mounted PVE/PVM not possible

* Modules with integrated low pressure tank line.

Schematic



V310386.A

Technical Specifications

Max. pressure	Port P continuous, Port A/B	350 bar [5076 psi]
	Port T static/dynamic	25/40 bar [362/580 psi]
Oil flow, rated	Port A/B and P	180 l/min [47 US gal/min]
	Port A/B max. recommended	100 l/min [26 US gal/min]
Spool travel	Standard	±7 mm [±0.28 in]
	Proportional range	±5 mm [±0,22 in]
	Float position	±7.5 mm [±0.30 in]
Max. internal leakage at 200 bar [2900 psi], 21 mm ² /s A/B→T / PO check valve and shock valve		6 cm ³ /min [0.36 in ³ /min]
Oil temperature (inlet)	Recommended	30 → 60°C [86 → 140°F]
	Minimum	-30 °C [-22 °F]
	Maximum	90 °C [194 °F]
Ambient temperature		-30 → 60 °C [-22 → 140 °F]
Oil viscosity	Operating range	12 - 75 mm ² /s [65 - 347 SUS]
	Minimum	4 mm ² /s [39 SUS]
	Maximum	460 mm ² /s [2128 SUS]
Filtration, max. contamination (ISO 4406)		18/16/13

Danfoss can accept no responsibility for possible errors in catalogues, brochures and other printed material. Danfoss reserves the right to alter its products without notice. This also applies to products already on order provided that such alterations can be made without changes being necessary in specifications already agreed. All trademarks in this material are property of the respective companies. Danfoss and the Danfoss logotype are trademarks of Danfoss A/S. All rights reserved.