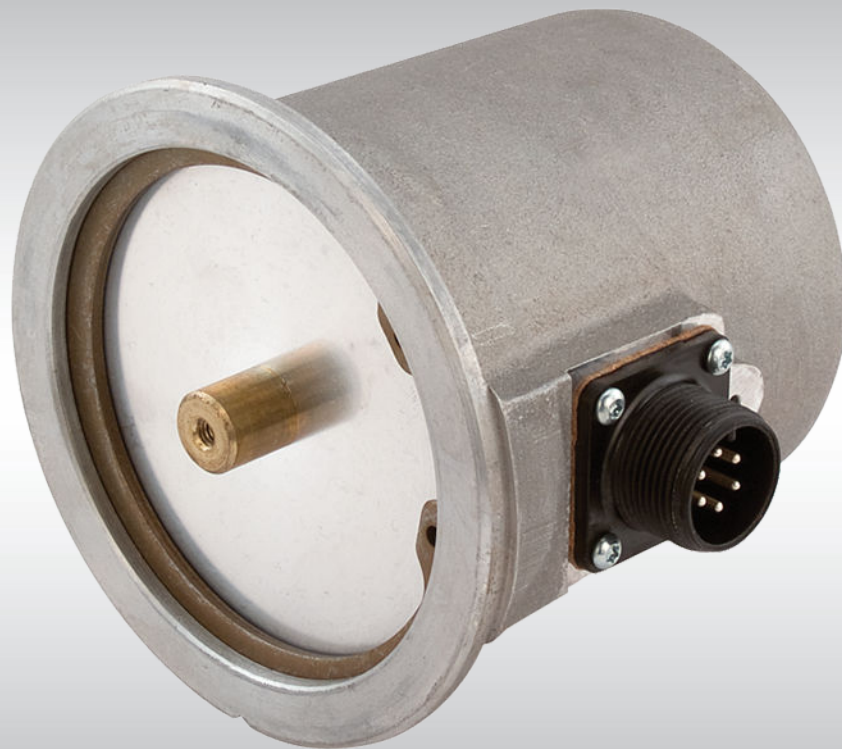


Technical Information

Sensors

# MCX104-CAN Slope Sensor



**Revision history***Table of revisions*

<b>Date</b>	<b>Changed</b>	<b>Rev</b>
November 2015	Converted to Danfoss layout	0001
December 2010	Initial release	0000

**Contents****General information**

Product overview.....	4
User liability and safety statements.....	4
OEM responsibility.....	4
Feature and options.....	4
Theory of operation.....	5
Vehicle roll angle and pitch angle definitions.....	6
Ordering information.....	6

**Product installation**

Dimensions.....	7
Mounting.....	7
Rotational polarity.....	8
Connector pin assignments.....	8
Machine wiring guidelines.....	8

**Parameter set-up**

Using the sensor's configuration input pins.....	10
Configuration input pin 0.....	11
Configuration input pin 1.....	11
Configuration input pin 2.....	12
Configuration input pin 3.....	12
Using the PLUS+1 <sup>®</sup> Service Tool.....	13

**Controller Area Network (CAN) message protocols**

Proprietary message protocol.....	14
Rotational angle (data Bytes 0, 1).....	14
Percent slope (data Bytes 2, 3).....	14
J1939 message protocol.....	15
Pitch angle/cross slope data (data Bytes 0, 1).....	15
Roll angle/cross slope data (data Bytes 2, 3).....	15

**Specifications**

Mechanical characteristics.....	16
Electrical characteristics.....	16
Environmental characteristics.....	16

## General information

### Product overview

*MCX104-CAN Slope Sensor*



The MCX104-CAN Slope Sensor is designed for use as a component in mobile machine control systems that require a measurement of deviation from a gravity reference.

The Sensor electromagnetically measures its rotational displacement (deviation) and its mount from a gravity reference. The reference is an oil-damped pendulous mass having freedom of movement in one plane about a fixed center point. Nominal sensor range is +/- 10% slope from reference. The Sensor's output information is broadcast over a Controller Area Network (CAN) using Danfoss proprietary and J1939 message protocols.

### User liability and safety statements

#### **OEM responsibility**

The OEM of a machine or vehicle in which Danfoss products are installed has the full responsibility for all consequences that might occur. Danfoss has no responsibility for any consequences, direct or indirect, caused by failures or malfunctions.

- Danfoss has no responsibility for any accidents caused by incorrectly mounted or maintained equipment.
- Danfoss does not assume any responsibility for Danfoss products being incorrectly applied or the system being programmed in a manner that jeopardizes safety.
- All safety critical systems shall include an emergency stop to switch off the main supply voltage for the outputs of the electronic control system. All safety critical components shall be installed in such a way that the main supply voltage can be switched off at any time. The emergency stop must be easily accessible to the operator.

### Feature and options

- Measures slope and angle
- Field proven measurement technology
- Compact design
- Rugged housing suitable for installation in harsh environments
- IP 67
- Excellent sensitivity
- Oil-damped to minimize vibration: 2 oil viscosities available
- PLUS+1® Compliant

## General information

### Theory of operation

The sensor is designed to measure rotational deviation with respect to gravity. The gravity reference for the device is a pendulous mass having freedom of movement in one plane. The deviation with respect to gravity is measured using a Rotational Variable Differential Transformer (RVDT). The rotor of the 4-pole RVDT is rigidly attached to the pendulum shaft. The stator of the RVDT which is attached to the MCX014-CAN housing consists of 4 transformer coils mounted 90° apart on the pole faces of a magnetically permeable frame. Secondaries of the coils are 180° apart and are wired in series.

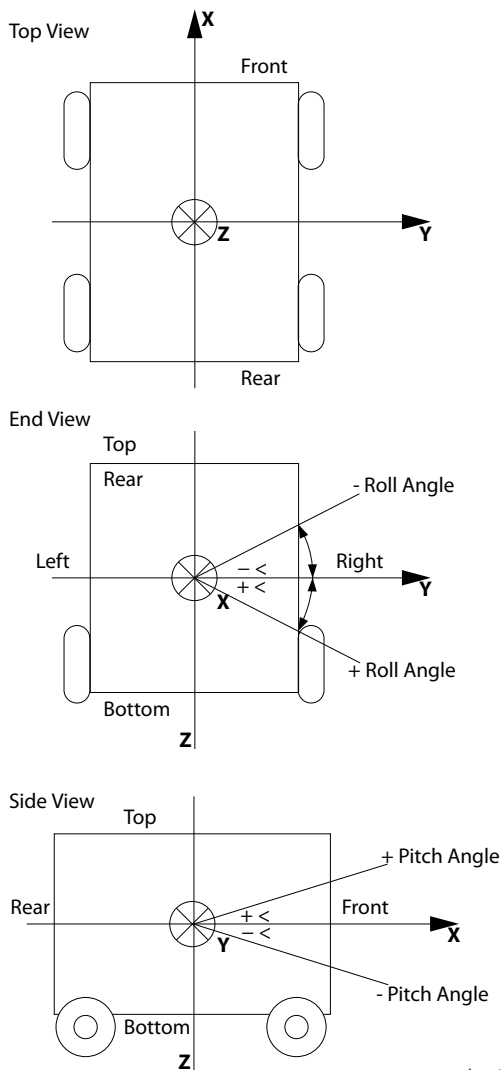
The primaries of the stator are excited with a small sinusoidal DC voltage. The position of the rotor with respect to the stator determines the number of flux linkages between the primary and secondary of each coil. This, in turn, determines the amount of voltage induced in each secondary. As the sensor rotates, the voltage induced in one secondary will increase while the other will decrease. The difference between secondary voltages determines the magnitude and direction of rotation. An onboard microcontroller converts rotational information into CAN bus messages. The following rotational information is available:

- Slope angle in degrees
- Slope angle in percent
- Long slope (pitch angle)
- Cross slope (roll angle)

Reference [Vehicle roll angle and pitch angle definitions](#) on page 6. Slope angle is defined as rise divided by run.

**General information**

**Vehicle roll angle and pitch angle definitions**



kwa1392922544033

**Ordering information**

*Product ordering information*

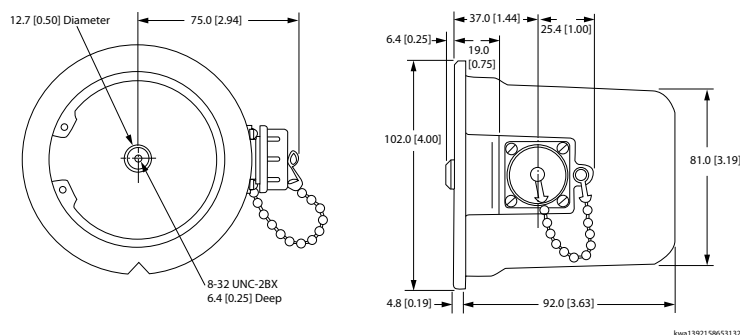
Product	Danfoss part number
MCX104-CAN, 1000 cs oil fill	11072648
MCX104-CAN, 3000 cs oil fill	11072647
Amphenol Right Angle Mating Connector Kit	K33083
Amphenol Straight Mating Connector Kit	K33162
PLUS+1® Service Tool	10101745

**Product installation**

**Dimensions**

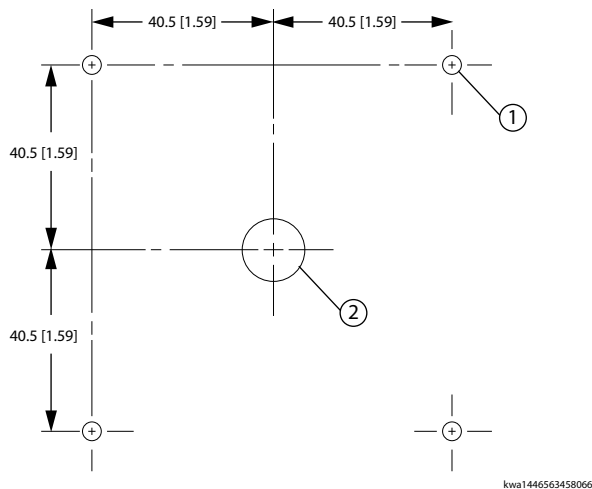
**MCX104-CAN mounting dimensions**

*millimeters [inches]*



**MCX104-CAN mounting holes**

*Mounting holes locations*



- 1** Four 8-32 UNC-2B screw holes
- 2** 15.1 mm (0.59 in) pilot hole

**Mounting**

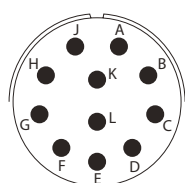
- 1.** Determine the location on any convenient vertical surface.
- 2.** Reference mounting hole locations, .
  - a) Drill and tap four #8/32 UNC-2B holes.
  - b) Drill a 15.1 mm [0.59 in] pilot hole at the center of the four holes.
- 3.** When the notch in the flange of the sensor is at the bottom, the sensor is approximately at null. If enough clearance exists above the sensor, install the two bottom cleats, leaving the screws loose enough to get the flange beneath the cleat. The cleats and screws are provided with the sensor.
  - a) Slide the flange of the sensor beneath these two cleats and install the other two.
  - b) Tighten the four cleats so the sensor is snug but can still be turned by hand for final leveling or sloping.

**Product installation**
**Rotational polarity**

The indicated rotational direction of the sensor (output) is defined by viewing the machined end with the polarity indicator notch pointing down and the connector located to the left. The axis of rotation is in a line that runs through the center of the alignment pin in the top of the device to the center of the bottom. Rotational polarity is positive when a counter-clockwise (CCW) rotation of the device results in a positive angle of rotation and a clockwise (CW) rotation results in a negative angle of rotation. Likewise, a negative rotational polarity will result in a CCW rotation having a negative angle of rotation and a CW rotation having a positive angle of rotation.

**Connector pin assignments**

11 pin Amphenol® MIL-C-26482 connector



P108 190E

Connector pins

Pin	Function
A	Not used
B	Not used
C	CAN shield
D	CAN high
E	CAN low
F	Power (+)
G	Configuration input 1
H	Configuration input 2
J	Configuration input 3
K	Ground (-)
L	Configuration input 0

**Machine wiring guidelines**

- Protect wires from mechanical abuse, run wires in flexible metal or plastic conduits.
- Use 85° C (185° F) wire with abrasion resistant insulation and 105° C (221° F) wire should be considered near hot surfaces.
- Use a wire size that is appropriate for the module connector.
- Separate high current wires such as solenoids, lights, alternators or fuel pumps from sensor and other noise-sensitive input wires.
- Run wires along the inside of, or close to, metal machine surfaces where possible, this simulates a shield which will minimize the effects of EMI/RFI radiation.
- Do not run wires near sharp metal corners, consider running wires through a grommet when rounding a corner.
- Do not run wires near hot machine members.
- Provide strain relief for all wires.
- Avoid running wires near moving or vibrating components.
- Avoid long, unsupported wire spans.



**Product installation**

- Ground electronic modules to a dedicated conductor of sufficient size that is connected to the battery (-).
- Power the sensors and valve drive circuits by their dedicated wired power sources and ground returns.
- Twist sensor lines about one turn every 10 cm (4 in).
- Use wire harness anchors that will allow wires to float with respect to the machine rather than rigid anchors.

** Caution**

---

Unused pins on mating connectors may cause intermittent product performance or premature failure. Plug all pins on mating connectors.

---

** Warning**

---

Unintended movement of the machine or mechanism may cause injury to the technician or bystanders. Improperly protected power input lines against over current conditions may cause damage to the hardware. Properly protect all power input lines against over-current conditions.

---

**Parameter set-up**

The sensor's software parameters may be configured in one of two ways: Configuration through the use of the sensor's four configuration pins or configuration through the use of the Danfoss PLUS+1® Service Tool.

**Using the sensor's configuration input pins**

The sensor has four configuration pins, each capable of detecting up to 32 distinct Configuration States. Each configuration pin can be connected directly to ground (State 0), left floating (State 31) or connected to ground through 1 of 30 different resistor values (States 1 through 30).

*Resistance values for each configuration state:*

State	Resistance ( $\Omega$ )	State	Resistance ( $\Omega$ )
0	0	16	2430
1	77	17	2760
2	160	18	3140
3	249	19	3583
4	341	20	4104
5	441	21	4725
6	560	22	5480
7	670	23	6414
8	800	24	7602
9	940	25	9160
10	1100	26	11310
11	1260	27	14440
12	1445	28	19440
13	1650	29	28670
14	1890	30	51500
15	2140	31	open

The Configuration States are checked by the sensor's microprocessor each time the sensor is powered up. In order to change any configuration parameters via the configuration pins, the sensor must be powered up with the configuration input in the desired Configuration State. Any changes made to the Configuration States while the sensor is powered are ignored.

If, on power up, the parameters configured by the Configuration State differ from the parameters currently stored in the sensor's non-volatile (NV) memory, then the parameters in NV memory will be overwritten with the new parameters, as long as the selected Configuration State is allowed for the configuration parameter. The following tables define allowable Configuration States for each of the four configuration input pins.

**Parameter set-up**
**Configuration input pin 0**
***Designating the sensor's function and the sensor's CAN bus address***

This configuration input pin sets the sensor's function (cross slope/roll angle or long slope/pitch angle) and the sensor's CAN address.

The factory default parameter is state 0

*The sensor's function and source address*

State	Function	Address
0	Cross Slope/ Roll angle	0xA0
1		0xA1
2		0xA2
3		0xA3
4	Long Slope/ Pitch Angle	0xA4
5		0xA5
6		0xA6
7		0xA7
8		0xA8

**Configuration input pin 1**
***Designating the sensor's CAN message protocol***

This configuration input pin sets the CAN protocol broadcast by the sensor.

The factory default parameter is State 1.

*The sensor's CAN message protocol*

State	CAN Message Protocol
1	Danfoss Proprietary
2	J1939

**Parameter set-up**
**Configuration input pin 2**
***Designating the sensor's signal parameters***

This configuration input pin sets the sensor's rotational parameters and filter constants.

Signals from the sensor's RVDT are sampled every 3ms and passed through a digital low-pass filter. The filter time constant is the filter constant times the sample rate (3ms). A larger filter constant provides a smoother sensor output but increases the response delay to a change in measured angle. A filter constant of 1 results in no filtering.

The factory default parameter is State 7.

*The sensor's CAN message protocol*

State	Rotational polarity	Filter constant
0	Positive (CW-/CCW+)	1
1		2
2		4
3		8
4		16
5		32
6		64
7		128
8	Negative (CW+/CCW-)	1
9		2
10		4
11		8
12		16
13		32
14		64
15		128

**Configuration input pin 3**
***Designating the CAN bus data transfer rate***

This configuration input pin sets the sensor's CAN bus data transfer rate.

The factory default baud rate is State 29

*The sensor's CAN bus data rate*

State	CAN bus data rate (Kbps)
30	125
29	250

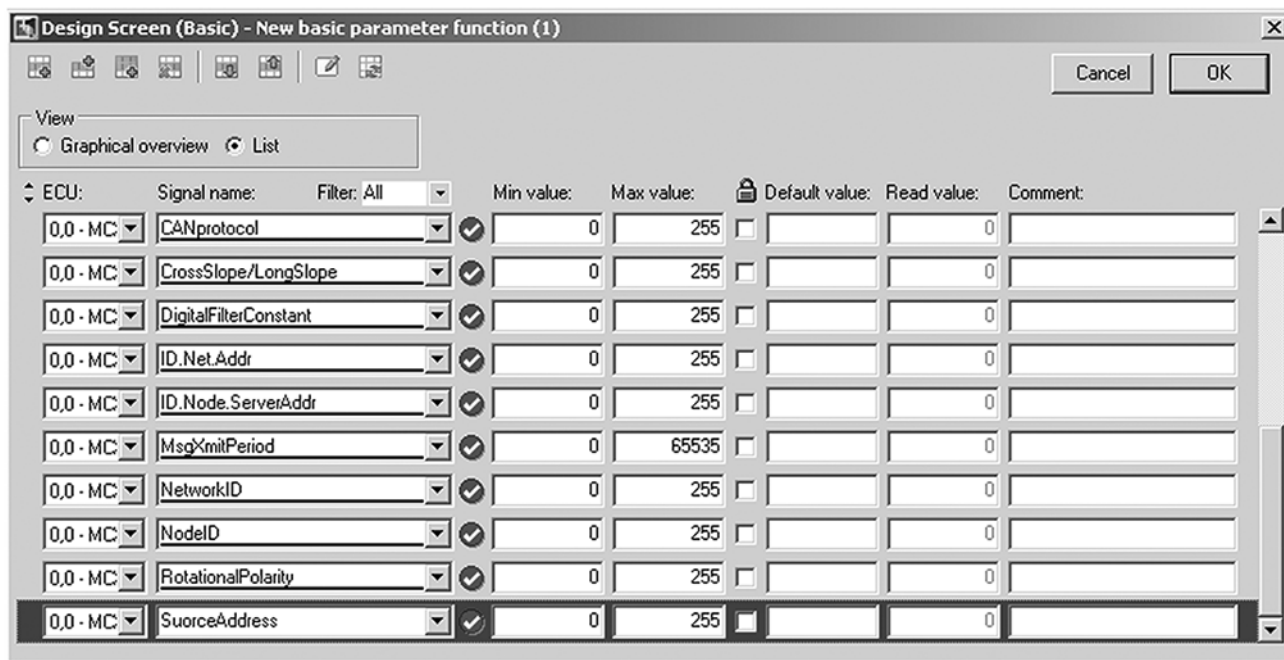
**Parameter set-up**
**Using the PLUS+1° Service Tool**

The sensor's parameters can also be set-up using the PLUS+1° Service Tool.

When the PLUS+1° Service Tool is used to set the sensor's parameters in NV memory, each of the configuration pins must be in State 31 (open). As long as the configuration pins remain in State 31, there will be no change to parameters stored in NV memory each time the sensor is powered up.

When the sensor is connected to the PLUS+1° Service Tool, the parameters can be modified.

PLUS+1° Service Tool *New basic parameter function* screen



The following table defines the allowable values for each of the sensor's parameters that can be modified using the PLUS+1° Service Tool.

PLUS+1° Service Tool parameter allowable values

PLUS+1° Service Tool signal (sensor parameter)	Allowable values	Comments
CANbaudRate	30, 29	30 = 125K baud; 29 = 250K baud
CANprotocol	1, 2	1 = Danfoss Proprietary; 2 = SAE J1939
CrossSlope/LongSlope	0, 1	0 = Cross slope; 1 = Long slope
DigitalFilterConstant	0 to 255	Time constant for digital filter
IDNetAddr	For Factory Use Only	
IDNodeServerAddr	For Factory Use Only	
MsgXmitPeriod	0 to 65535	Transmit rate in msec; 0 = Factory default
NetworkID	0 to 255	PLUS+1° Network ID
NodeID	0 to 255	PLUS+1° Node ID
RotationalPolarity	0, 1	0 = Negative; 1 = Positive
SourceAddress	0 to 255	For use in non PLUS+1° systems

## Controller Area Network (CAN) message protocols

The sensor supports two Controller Area Network (CAN) protocols: Danfoss Proprietary and J1939.

Either the state of configuration input pin 1 or the PLUS+1<sup>®</sup> Service Tool designates the CAN message protocol broadcast by the sensor.

The CAN bus data rate is set by the state of configuration input pin 3 or the CAN bus data transfer rate set by the PLUS+1<sup>®</sup> Service Tool.

### Proprietary message protocol

Danfoss proprietary message protocol uses a 29-bit CAN message identifier that is compatible with the J1939 Proprietary-A PGN, allowing Danfoss proprietary CAN messages to coexist with J1939 messages.

*If the Danfoss protocol is used on a CAN bus that is also broadcasting J1939 messages, the sensor CAN bus data rate must be set at 250Kbps.*

---

Message format:

The Sensor's source address: The Least Significant Bit (LSB) of the message identifier and is set by the state of configuration input pin 0 or through the use of the PLUS+1<sup>®</sup> Service Tool.

Identifier: 0x18EF2Exx (where xx is the source address designated by configuration input 0)

The sensor's default message transmit rate: 15ms. The transmit rate can be changed using the PLUS+1<sup>®</sup> Service Tool

The sensor's data messages: Four 16-bit proprietary messages are broadcast.

#### Rotational angle (data Bytes 0, 1)

Rotation angle is a 16-bit signed value where 7000 to 58000 counts correspond to a factory calibrated rotational angle of +/- 5.711°. The sensor will broadcast a CAN message of 0xFFFF if this range is exceeded.

*Rotational angle CAN data message format*

Byte#	1								0							
Bit#	7	6	5	4	3	2	1	0	7	6	5	4	3	2	1	0

#### Percent slope (data Bytes 2, 3)

Percent slope is a 16-bit signed value where 7000 to 58000 counts corresponds to a factory calibrated slope of +/- 10% of percent slope slope/bit). The sensor electronics will broadcast a message of 0xFFFF if this range is exceeded.

*Percent slope CAN data message format*

Byte#	3								2							
Bit#	7	6	5	4	3	2	1	0	7	6	5	4	3	2	1	0

Danfoss proprietary CAN messages three (data bytes 4, 5) and four (data bytes 6, 7) are for Danfoss factory use only.

**Controller Area Network (CAN) message protocols**
**J1939 message protocol**

The sensor supports the SAE J1939 message protocol using a fixed addressing scheme. The source address is the LSB of the message identifier and is designated by the state of configuration input 0 or is set through the use of the PLUS+1<sup>®</sup> Service Tool.

SAE J1939 PGN 61459 defines the data portion of the sensor's CAN message. The values in the pitch angle and roll angle message fields depend on the state of configuration input 0 or the parameters set using the PLUS+1<sup>®</sup> Service Tool. For States 0-3, the slope data is contained in the roll angle field and the pitch angle is set to 0. For States 4-7, the slope data is contained in the pitch angle field and the roll angle is set to 0. The generic J1939 CAN message data format for both data fields is 0.002 deg/bit with a -64 deg offset (e.g. 0 = -64 deg, 32000 = 0 degree, 65535 = 67.07 deg.). However, the measurement range of the sensor limits the broadcast information to +/- 14.5% slope or +/- 7.5°. Any value outside of the sensor's allowable measurement range will be broadcast as 0xFFFF

Message format:

Transmit rate: 10ms

Identifier: 0x0CF013xx (where xx is the source address set by configuration input 0)

Two data messages are broadcasted:

**Pitch angle/cross slope data (data Bytes 0, 1)**

The calibrated measurement range of the Sensor is +/- 5.711 degrees or +/- 10% slope. Any value outside of the sensor's calibrated measurement range will be broadcast as 0xFFFF.

*Pitch angle/cross slope data J1939 CAN message data format:*

Byte#	1								0							
Bit#	7	6	5	4	3	2	1	0	7	6	5	4	3	2	1	0

**Roll angle/cross slope data (data Bytes 2, 3)**

The calibrated measurement range of the sensor is +/- 5.711 degrees or +/- 10% slope. Any value outside of the Sensor's calibrated measurement range will be broadcast as 0xFFFF.

Data bytes 4,5,6,7 are not used.

*Roll angle/cross slope data J1939 CAN message data format*

Byte#	3								2							
Bit#	7	6	5	4	3	2	1	0	7	6	5	4	3	2	1	0

---

**Technical Information    MCX104-CAN Slope Sensor**


---

**Specifications**
**Mechanical characteristics**

<b>Operational range, degrees</b>	± 5.771°
<b>Operational range, percent slope</b>	± 10.51%
<b>Accuracy, degrees</b>	± 0.17°
<b>Accuracy, percent slope</b>	0.30%
<b>Temperature drift, degrees</b>	± 0.2° over operating range
<b>Temperature drift, percent slope</b>	0.35% over operating range
<b>Repeatability (hysteresis)</b>	Degrees: 0.023° Percent slope: 0.04%

**Electrical characteristics**

<b>Supply voltage</b>	9 to 36 Vdc
<b>Maximum current consumption</b>	0.5 W at 9 Vdc; 10.0 W at 32 Vdc

**Environmental characteristics**

<b>Operating temperature range</b>	0°C to 70°C (32°F to 158°F)
<b>Storage temperature range</b>	-40°C to 77°C (-40°F to 170°F)
<b>Ingress Protection (IP) rating (with mating connector attached)</b>	IP 67/ IEC 60529
<b>EMI/RFI rating</b>	ISO 13766/ EN 13309
<b>Shock</b>	50 G/ IEC 60068-2-27
<b>Vibration</b>	15.6 Grms/ IEC 60068-2-64











**Products we offer:**

- Bent Axis Motors
- Closed Circuit Axial Piston Pumps and Motors
- Displays
- Electrohydraulic Power Steering
- Electrohydraulics
- Hydraulic Power Steering
- Integrated Systems
- Joysticks and Control Handles
- Microcontrollers and Software
- Open Circuit Axial Piston Pumps
- Orbital Motors
- PLUS+1® GUIDE
- Proportional Valves
- Sensors
- Steering
- Transit Mixer Drives

**Danfoss Power Solutions** is a global manufacturer and supplier of high-quality hydraulic and electronic components. We specialize in providing state-of-the-art technology and solutions that excel in the harsh operating conditions of the mobile off-highway market. Building on our extensive applications expertise, we work closely with our customers to ensure exceptional performance for a broad range of off-highway vehicles.

We help OEMs around the world speed up system development, reduce costs and bring vehicles to market faster.

Danfoss – Your Strongest Partner in Mobile Hydraulics.

**Go to [www.powersolutions.danfoss.com](http://www.powersolutions.danfoss.com) for further product information.**

Wherever off-highway vehicles are at work, so is Danfoss. We offer expert worldwide support for our customers, ensuring the best possible solutions for outstanding performance. And with an extensive network of Global Service Partners, we also provide comprehensive global service for all of our components.

Please contact the Danfoss Power Solution representative nearest you.

**Comatrol**

[www.comatrol.com](http://www.comatrol.com)

**Schwarzmueller-Inverter**

[www.schwarzmueller-inverter.com](http://www.schwarzmueller-inverter.com)

**Turola**

[www.turolaocg.com](http://www.turolaocg.com)

**Hydro-Gear**

[www.hydro-gear.com](http://www.hydro-gear.com)

**Daikin-Sauer-Danfoss**

[www.daikin-sauer-danfoss.com](http://www.daikin-sauer-danfoss.com)

Local address:

**Danfoss Power Solutions (US) Company**  
2800 East 13th Street  
Ames, IA 50010, USA  
Phone: +1 515 239 6000

**Danfoss Power Solutions GmbH & Co. OHG**  
Krokamp 35  
D-24539 Neumünster, Germany  
Phone: +49 4321 871 0

**Danfoss Power Solutions ApS**  
Nordborgvej 81  
DK-6430 Nordborg, Denmark  
Phone: +45 7488 2222

**Danfoss Power Solutions Trading (Shanghai) Co., Ltd.**  
Building #22, No. 1000 Jin Hai Rd  
Jin Qiao, Pudong New District  
Shanghai, China 201206  
Phone: +86 21 3418 5200

Danfoss can accept no responsibility for possible errors in catalogues, brochures and other printed material. Danfoss reserves the right to alter its products without notice. This also applies to products already on order provided that such alterations can be made without changes being necessary in specifications already agreed. All trademarks in this material are property of the respective companies. Danfoss and the Danfoss logotype are trademarks of Danfoss A/S. All rights reserved.