

MAKING MODERN LIVING POSSIBLE



Parts Manual

OSPB/OSPC/OSPL/OSPD/ OSPQ/OSPF





Revisions - Table of Content

Revision History

Table of Revisions

Date	Page	Changed	Rev
Feb 1998	All	First edition	AA
Jan 2012	All	New layout	BA
Jun 2012			CA
Jun 2014	All	New layout	DA

Exploded View

Exploded View OSPB 3
 Exploded View OSPC / OSPF 4
 Exploded View OSPQ..... 5
 Exploded View OSPD..... 6
 Exploded View OSPL..... 7

Spare Parts

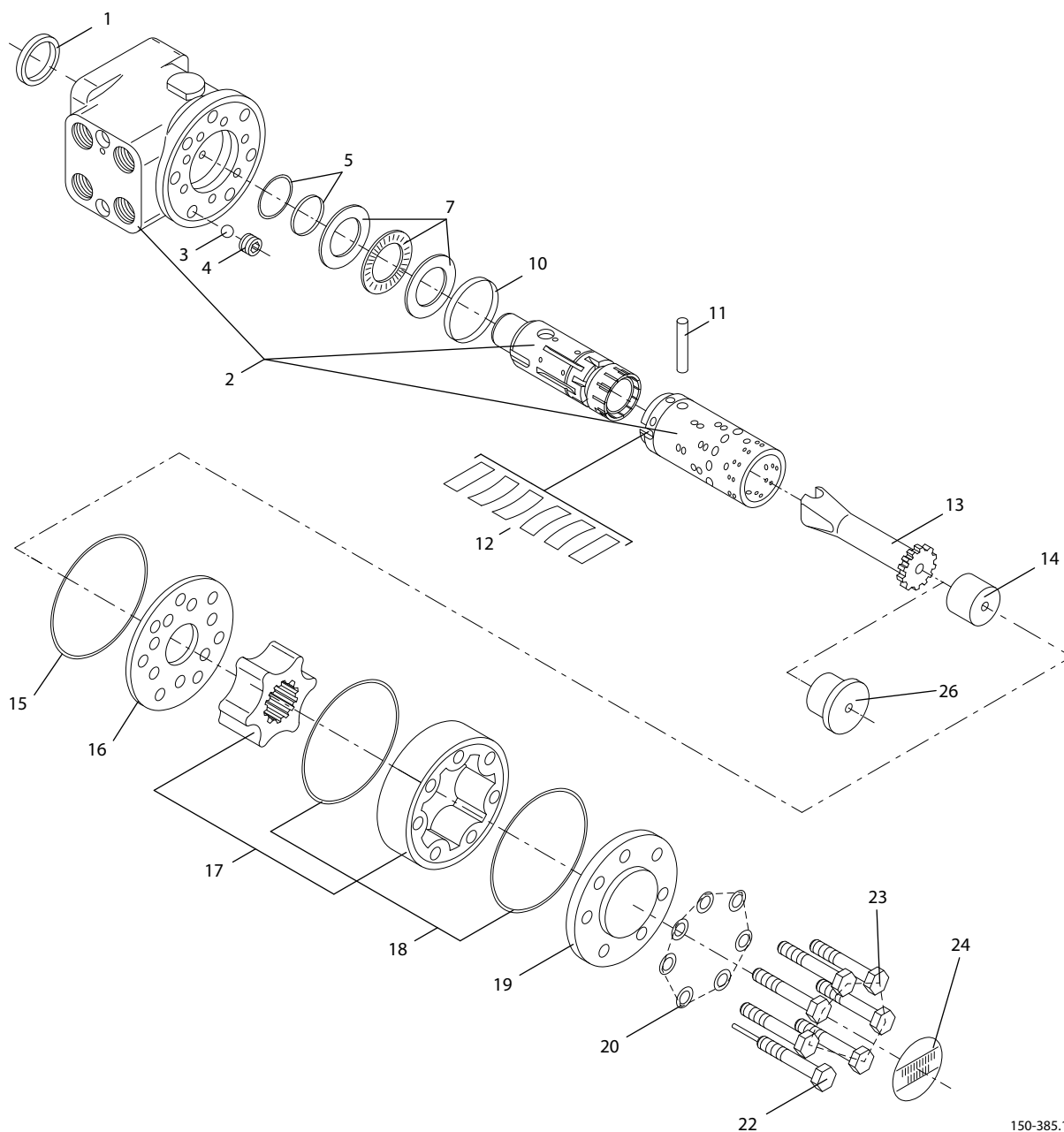
Spare Pats..... 8

Set of Seals

Set of Seals..... 12



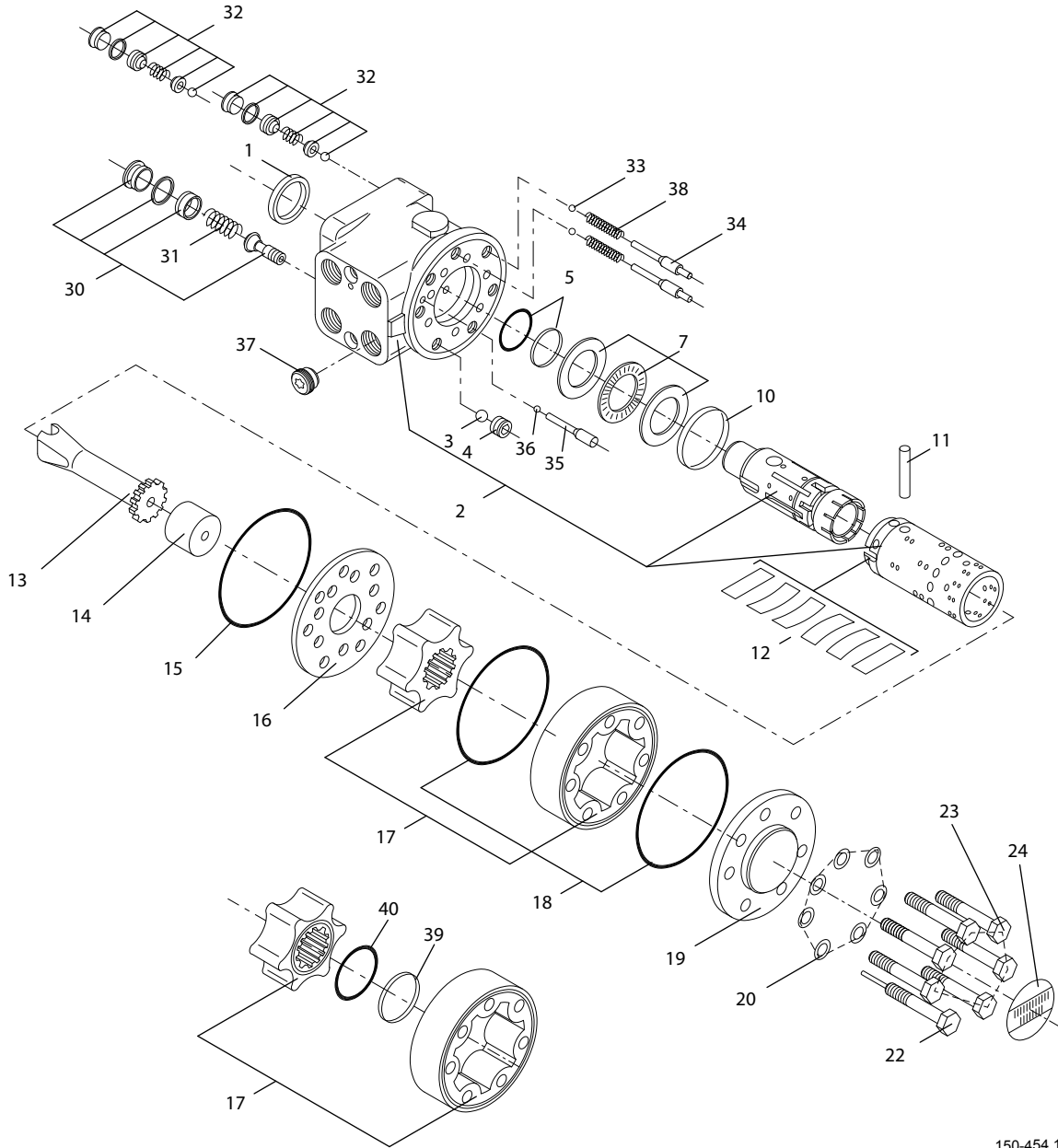
Exploded View OSPB



150-385.10



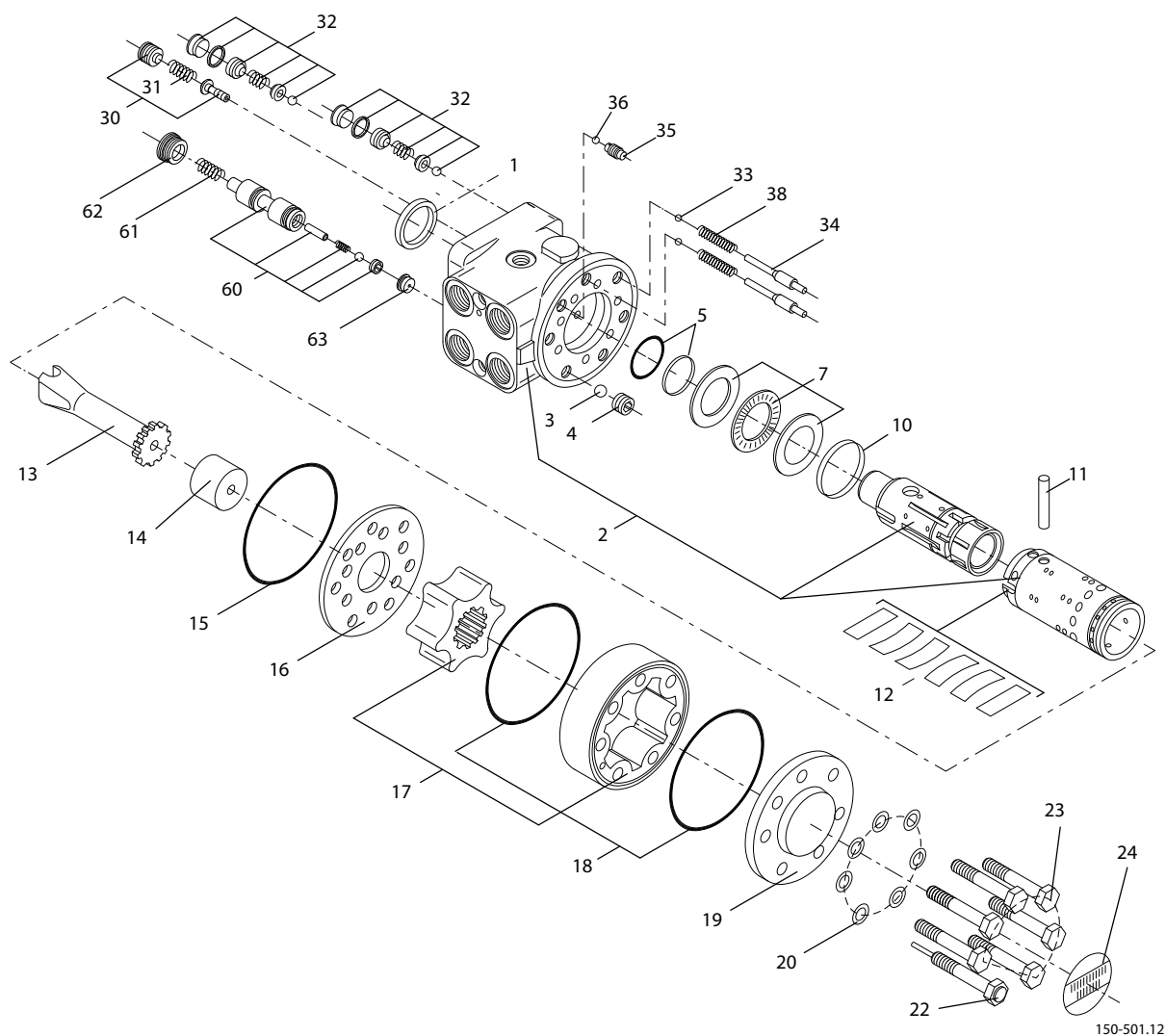
Exploded View OSPC / OSPF



150-454.10



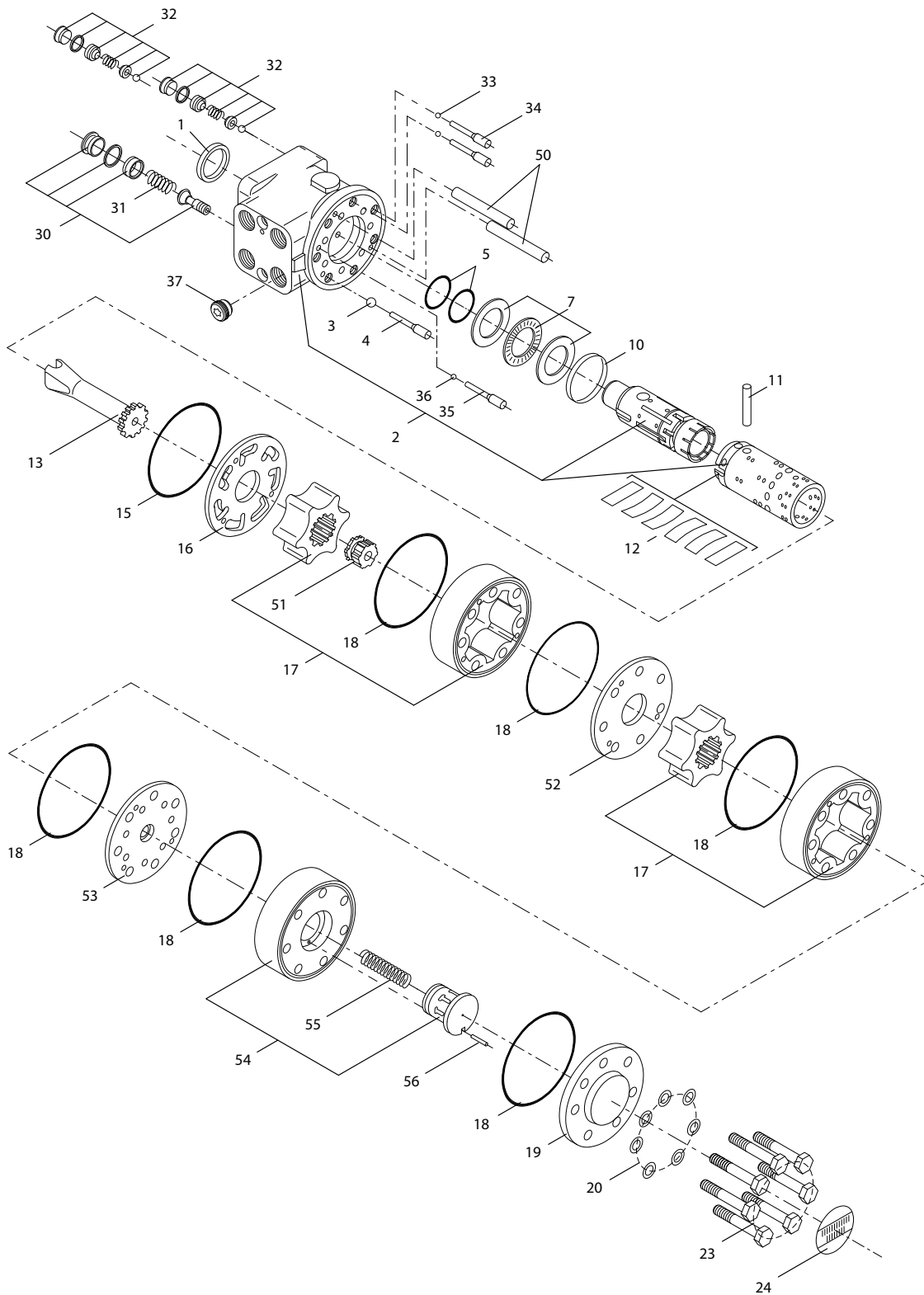
Exploded View OSPQ



150-501.12



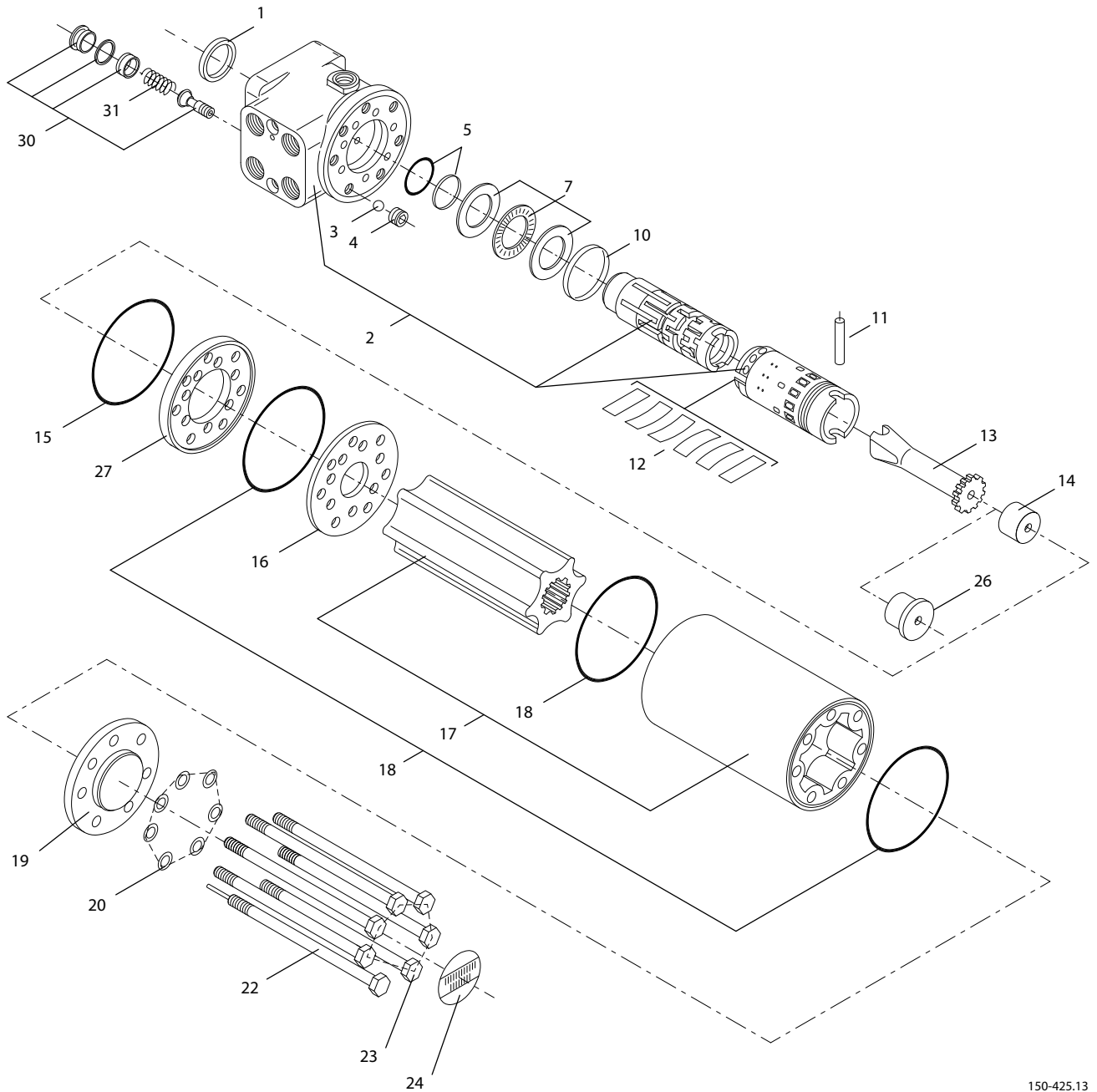
Exploded View OSPD



150-493.12



Exploded View OSPL



150-425.13


Spare Parts
Spare parts

Item	Spare Parts	Code No.	Comments	Number per unit
1	Dust seal ring	633B9002		1
2	Housing, spool and sleeve		Not sold separately	1
3	Ball Ø8.5 mm	150N4027**) 689X1031	Set of spare parts	1
4	Thread bushing	150-0304		1
4	Thread bushing with pin	150G4336	OSPD	1
5	Shaft seal	150N4014 150N4007 633B2060**)	Roto Glyd O-ring/Kin-ring Lip seal	1 1 1
7	Bearing	150-4262		1
10	Ring	150N4026**) 150-0310	Set of spare parts	1
11	Cross pin	150-0305		1
12	Set of springs	150-4091**) 150-4207 150-4209 150-4265 150-4269 150N4018 150N4019 150N4020**) 150N4028**) 150N4035 150N4037**)		1 1 1 1 1 1 1 1 1 1 1
13	Cardan shaft	150-0844 150N0653 150-0967	On steering units manufactured before week 20 1991, the gearwheel set must be changed if the cardan shaft is replaced. For gearwheel set without stepped splines OSPD	1 1 1
14	Spacer	150-0435**) 150-0436**) 150N0654 150-0437**) 150N0655 150-0438 150N0656 150-0439**) 150N0638 150-0441**) 150-0412 *) 150-0413 *) 150-0414 *) 150-1595 *) 150-0415 *) 150-1596 *) 150-0416 *) 150-1597 *)	OSP 40, OSP 50, OSP 70 no spacer OSP 80 OSP 100 OSP 100 for gearwheel set 150-4064 OSP 125 OSP 125 for gearwheel set 150-4065 OSP 160 OSP 160 for gearwheel set 150-4070 OSP 200 OSP 200 for gearwheel set 150-4071 OSP 315 OSP 400 OSP 500 OSPB 630 OSPL 630 OSPB 800 OSPL 800 OSPB 1000 OSPL 1000	1 1 1 1 1 1 1 1 1 1 1 1 1 1 1 1 1 1 1
15	O-ring	633B0432 633B1202**)		1 1
16	Distributor plate	150N0610 150G4301	OSPD	1 1

*) Not available, change cardan shaft and gearwheel set

**) Changed or obsolete


Spare Parts
Spare parts

Item	Spare Parts	Code No.	Comments	Number per unit
17	Gearwheel set	150-4169	OSP 40 w = 6.5	1
		150-4171	OSP 50 w = 6.5	1
		150G4200	OSPD 60 Low excentricity w = 9.1	1
		150-4170	OSP 70 w = 9.1	1
		150-4139**)	OSP 70 No slip w = 9.1	1
		150G4201	OSPD 70 w = 9.1	1
		150-4172	OSP 80 w = 10.4	1
		150-4140	OSP 80 No slip w = 10.4	1
		150G4202	OSPD 80 w = 10.4	1
		150-4173	OSP 100 w = 13.0	1
		150-4064**)	OSP 100 Without stepped splines w = 13.0	1
		150-4141	OSP 100 w = 13.0	1
		150G4203	OSPD 100 No slip w = 13.0	1
		150-4174	OSP 125 w = 16.2	1
		150-4065**)	OSP 125 w = 16.2	1
		150-4142	OSP 125 Without stepped splines w = 16.2	1
		150G4204	OSPD 125 w = 16.2	1
		150G4211	OSPD 125 No slip w = 16.2	1
		150-4175	OSP 160 w = 20.8	1
		150-4070**)	OSP 160 Low excentricity w = 20.8	1
		150-4145**)	OSP 160 w = 20.8	1
		150G4206	OSPD 160 Without stepped splines w = 20.8	1
		150G4212	OSPD 160 w = 20.8	1
		150-4166	OSP 185 No slip w = 24.0	1
		150-4186	OSP 200 w = 26.0	1
		150-4071**)	OSP 200 Low excentricity w = 26.0	1
		150-4146**)	OSP 200 w = 26.0	1
		150G4207	OSPD 200 w = 26.0	1
		150G4214	OSPD 200 Without stepped splines w = 26.0	1
		150G4215	OSPD 230 w = 35.1	1
		150-4129	OSP 230 No slip w = 35.1	1
		150-4187	OSP 250 w = 32.5	1
		150-4188	OSP 315 Low excentricity w = 40.9	1
150G4209	OSPD 315 Low excentricity w = 40.9	1		
150-4189	OSP 400 w = 52.0	1		
150-4190	OSP 500 w = 65.0	1		
150-4194	OSPL 520 w = 67.8	1		
150-4191	OSPB 630 w = 82.0	1		
150-4195	OSPL 630 w = 82.0	1		
150-4192	OSPB 800 w = 104.0	1		
150-4196	OSPL 800 w = 104.0	1		
150-4193	OSPB 1000 w = 134.0	1		
150-4197	OSPL 1000 w = 134.0	1		
18	O-ring	633B0432		2
		633B0432	for OSPD	6
		633B0432	for OSPL	3
		633B1173**)		2
		633B0208**)	for OSPD	6
19	End cover	150-0328		1
		150-1355	Balanced end cover	1
20	Washer	684X0115		7
		684X2481**)		7

*) Not available, change cardan shaft and gearwheel set

***) Changed or obsoleted


Spare Parts
Spare parts

Item	Spare Parts	Code No.	Comments		Number per unit
22	Special screw	150-0326	OSP 40/OSP 50	l = 67.4	1
		150-0321	OSP 70/OSP 80	l = 63.0	1
		150-0322	OSP 100	l = 65.5	1
		150-1450	OSP 125	l = 68.5	1
		150-0323	OSP 160	l = 73.0	1
		150-0324	OSP 185/OSP 200	l = 78.5	1
		150-1575	OSP 230/OSP 250	l = 86.8	1
		150-0325	OSP 315	l = 93.5	1
		150-0451	OSP 400	l = 104.5	1
		150-0452	OSP 500	l = 117.5	1
		150-1579	OSPL 520	l = 131.5	1
		150-0453	OSPB 630	l = 134.5	1
		150-1580	OSPL 630	l = 146.5	1
		150-0454	OSPB 800	l = 156.5	1
		150-1581	OSPL 800	l = 166.5	1
		150-0455	OSPB 1000	l = 186.5	1
		150-1582	OSPL 1000	l = 196.5	1
23	Screws	681X1577	OSP 40/OSP 50	l = 30	6
		681X1939	OSPD 60/120	l = 90	7
		681X1270	OSPD 60/185	l = 100	7
		681X1178	OSPD 60/220	l = 105	7
		150G4385	OSPD 60/260, OSPD 60/290	l = 115	7
		681X1578	OSP 70/OSP 80	l = 35	6
		681X1579	OSP 100/OSP125	l = 40	6
		681X1939	OSPD 70/140, OSPD 70/150	l = 90	7
		681X1480	OSPD 70/170	l = 95	7
		150G4384	OSPD 70/195	l = 97	7
		681X1270	OSPD 70/230	l = 100	7
		681X1178	OSPD 70/270	l = 105	7
		681X1487	OSPD 70/385	l = 120	7
		681X1480	OSPD 80/160, OSPD 80/180	l = 95	7
		150G4384	OSPD 80/205	l = 97	7
		681X1178	OSPD 80/240	l = 105	7
		681X1940	OSPD 80/280	l = 110	7
		150G4386	OSPD 80/395	l = 125	7
		150G4384	OSPD 100/200	l = 97	7
		681X1270	OSPD 100/225	l = 100	7
		681X1178	OSPD 100/260	l = 105	7
		681X1940	OSPD 100/300	l = 110	7
		150G4386	OSPD 100/415	l = 125	7
		681X1178	OSPD 125/250	l = 105	7
		681X1940	OSPD 125/285	l = 110	7
		150G4385	OSPD 125/325	l = 115	7
		681X1941	OSPD 125/440	l = 130	7
		681X1580	OSP 160	l = 45	6
		681X1581	OSP 185/OSP 200	l = 50	6
		681X1834	OSP 230/OSP 250	l = 60	6
		681X1582	OSP 315	l = 65	6
		681X1583	OSP 400	l = 80	6
		681X1939	OSP 500	l = 90	6
		681X1178	OSPL 520	l = 105	6
		681X1940	OSPB 630	l = 110	6
		681X1487	OSPL 630	l = 120	6
		681X1941	OSPB 800	l = 130	6
		681X1488	OSPL 800	l = 140	6
		681X1339	OSPB 1000	l = 160	6
		681X1489	OSPL 1000	l = 170	6

*) Not available, change cardan shaft and gearwheel set

**) Changed or obsolete


Spare Parts
Spare parts

Item	Spare Parts	Code No.	Comments	Number per unit				
24	Name plate		Not sold separately	1				
26	Spacer	150-0443 *)	All OSPB 400-1000 and all OSPL 800-1000	1				
27	Intermediate plate	150-1591**)	OSPL	1				
30	<u>Relief valve</u>	11005526	Open center	1				
		150-4270**)	Open center	1				
		150-4281	LS	1				
		150N4021**)	Open center Ø7.2	1				
	<u>Special relief valve</u>	150-4054**)	OSPQ	1				
		150-4084	Customized for CN user	1				
31	<u>Spring for relief valve</u>	Setting < 70 bar	wire Ø1.6	663X6021	LS	1		
		70-210 bar	wire Ø2.1	663X6022	LS	1		
		140-175 bar	wire Ø1.9	663X6183	OSPQ	1		
	<u>Spring for relief valve</u>	40-120 bar	wire Ø2.3	150-1970	Open center	1		
		110-210 bar	wire Ø2.4	150-1969	Open center	1		
		70-105 bar	wire Ø1.9	663X1774**)	Open center	1		
		140-180 bar	wire Ø2.2	663X1128*)	Open center	1		
		40-70 bar	wire Ø1.8	663X1800**)		1		
		110-155 bar	wire Ø2.1	663X1802**)		1		
		140-180 bar	wire Ø2.7	663X6026**)	for 150N4021	1		
		180-210 bar	wire Ø2.4	663X6076**)		1		
		32	<u>Complete shock valve</u>	90-190 bar	wire Ø1.9	11005529	cupper brown	2
				180-240 bar	wire Ø1.9		black	2
						150-4268**)		2
33	Ball 3/16 in	689X1005		2				
34	Pin for suction valve	150-4080		2				
		150G4337	OSPD	2				
35	LS check valve, screw	150-1606		1				
		150G1355	OSPQ	1				
36	LS check valve, ball 3,0 mm ball 3/16 in	689X1043		1				
		689X1005	OSPQ	1				
37	Check valve	150N4091	M18 × 1.5	1				
		150N4092	3/4 - 16 UNF	1				
		150N4093	G1/2, PF/2	1				
		150N4094	M22 × 1.5	1				
38	Springs for suction valve	663X1134		2				
39	Seal ring	150N0630	For no slip gearwheel set	1				
40	O-ring	633B0116	For no slip gearwheel set	1				

*) Not available, change cardan shaft and gearwheel set

***) Changed or obsoleted


Spare Parts
Spare parts

Item	Spare Parts	Code No.	Comments	Number per unit
50	Mounting pin	150G4354	OSPD 60/120 l = 44.8	2
		150G4363	OSPD 60/185 l = 56.5	2
		150G4345	OSPD 60/220 l = 61.7	2
		150G4381	OSPD 60/260 l = 68.2	2
		150G4370	OSPD 60/290 l = 68.9	2
		150G4354	OSPD 70/140 l = 44.8	2
		150G4355	OSPD 70/150 l = 46.1	2
		150G4357	OSPD 70/170 l = 48.7	2
		150G4359	OSPD 70/195 l = 52.0	2
		150G4363	OSPD 70/230 l = 56.5	2
		150G4345	OSPD 70/270 l = 61.7	2
		150G4371	OSPD 70/385 l = 76.7	2
		150G4356	OSPD 80/160 l = 47.4	2
		150G4358	OSPD 80/180 l = 50.0	2
		150G4361	OSPD 80/205 l = 53.3	2
		150G4364	OSPD 80/240 l = 57.8	2
		150G4367	OSPD 80/280 l = 63.0	2
		150G4372	OSPD 80/395 l = 78.0	2
		150G4359	OSPD 100/200 l = 52.6	2
		150G4362	OSPD 100/225 l = 55.9	2
		150G4366	OSPD 100/260 l = 60.4	2
		150G4369	OSPD 100/300 l = 65.6	2
		150G4373	OSPD 100/415 l = 80.6	2
		150G4365	OSPD 125/250 l = 59.1	2
150G4368	OSPD 125/285 l = 63.7	2		
150G4370	OSPD 125/325 l = 68.9	2		
150G4374	OSPD 125/440 l = 83.8	2		
51	Cardan shaft	150G4350	OSPD	1
		150G4389**)	OSPD, 315 cm ³ gearwheel set	1
52	Distributor plate	150G4303		1
53	Distributor plate	150G4305		1
54	Valve and valve housing	150G4213		1
55	Spring	633X6151		1
56	Guide pin	682L2004		1
60	Amplification spool		Not sold separately	1
61	Spring	633X6145		1
62	Plug	150G1201		1
63	Amplification orifice		Not sold separately	1

*) Not available, change cardan shaft and gearwheel set

**) Changed or obsoleted

Set of Seals
Set of Seals

Item	Spare Parts	Code No.	Comments	Number per unit
1	<u>Standard</u>	150N4038	Set of seals	1
5	Dust seal ring	633B9002		1
	Shaft seal	150N4014	Roto Glyd	2
	O-ring	633B1447		1
	O-ring	633B1468		2
	O-ring	633B1810		1
	O-ring	633B1202		2
	O-ring	633B1173		1
15	O-ring	633B0432		2
18	O-ring	633B0432		1
20	Washer	684X0115		2
				7
1	<u>Universal</u>	150N4039	Set of seals	1
5	Dust seal ring	633B9002		1
	Shaft seal	150N4014	Roto Glyd	1
		150N4007	O-ring/Kin-ring	1
		633B2060	Lip seal	1
	O-ring	633B1447		2
	O-ring	633B1468		1
	O-ring	633B1810		2
	O-ring	633B1202		1
	O-ring	633B1173		2
15	O-ring	633B0432		1
18	O-ring	633B0432		2
20	Washer	684X0115		7
1	<u>No slip gearwheel set</u>	150N4044	Set of seals	1
5	Dust seal ring	633B9002		1
	Shaft seal	150N4014	Roto Glyd	1
		150N4007	O-ring/Kin-ring	1
	O-ring	633B1447		2
	O-ring	633B1468		1
	O-ring	633B1810		2
	O-ring	633B1202		1
	O-ring	633B1173		2
15	O-ring	633B0432		1
18	O-ring	633B0432		2
20	Washer	684X0115		7
39	Seal ring	150N0630	For no slip gearwheel set	1
40	O-ring	633B0116	For no slip gearwheel set	1
1	<u>OSPL</u>	150N4042	Set of seals	1
5	Dust seal ring	633B9002		1
	Shaft seal	150N4014	Roto Glyd	1
		150N4007	O-ring/Kin-ring	1
	O-ring	633B1447		2
	O-ring	633B1468		1
	O-ring	633B1810		2
	O-ring	633B1202		1
	O-ring	633B1173		3
15	O-ring	633B0432		1
18	O-ring	633B0432		3
20	Washer	684X0115		7
1	<u>OSPD</u>	150N4041	Set of seals	1
5	Dust seal ring	633B9002		1
	Shaft seal	150N4014	Roto Glyd	1
	O-ring	633B1447		2
	O-ring	633B1468		1
	O-ring	633B1810		2
	O-ring	633B1202		1
	O-ring	633B0208		6
15	O-ring	633B0432		1
18	O-ring	633B0432		6
20	Washer	684X0115		7
1	<u>O-ring/Kin-ring</u>	150-4206	Set of seals	1
5	Dust seal ring	633B9002		1
	Shaft seal	150N4007	O-ring/Kin-ring	1
	O-ring	633B1202		1
	O-ring	633B1173		2
20	Washer	684X0115		7



Set of Seals

Set of Seals

Item	Spare Parts	Code No.	Comments	Number per unit
1	Lip Seal	150-4267	Set of seals	1
5	Dust seal ring	633B9002		
	Shaft seal	633B2060		
	O-ring	633B1202		
	O-ring	633B1173		
20	Washer	684X0115		7
	QSPA	150-4205	Set of seals Kin-ring	1
	Shaft seal	633B9004		
	O-ring	633B1202		
	O-ring	633B1173		
	O-ring	633B1192		
20	Washer	684X0115		7
1	Roto Glyd, O-ring/Kin-ring	150N4040	Roto Glyd O-ring/Kin-ring	1
5	Dust seal ring	633B9002		
	Shaft seal	150N4014		
		150N4007		
	O-ring	633B1447		
	O-ring	633B1468		
	O-ring	633B1810		
	O-ring	633B1202		
	O-ring	633B1173		
15	O-ring	633B0432		
18	O-ring	633B0432		
20	Washer	684X0115		



Notes



Products we offer:

- Bent Axis Motors
- Closed Circuit Axial Piston Pumps and Motors
- Displays
- Electrohydraulic Power Steering
- Electrohydraulics
- Hydraulic Power Steering
- Integrated Systems
- Joysticks and Control Handles
- Microcontrollers and Software
- Open Circuit Axial Piston Pumps
- Orbital Motors
- PLUS+1® GUIDE
- Proportional Valves
- Sensors
- Steering
- Transit Mixer Drives

Danfoss Power Solutions is a global manufacturer and supplier of high-quality hydraulic and electronic components. We specialize in providing state-of-the-art technology and solutions that excel in the harsh operating conditions of the mobile off-highway market. Building on our extensive applications expertise, we work closely with our customers to ensure exceptional performance for a broad range of off-highway vehicles.

We help OEMs around the world speed up system development, reduce costs and bring vehicles to market faster.

Danfoss – Your Strongest Partner in Mobile Hydraulics.

Go to www.powersolutions.danfoss.com for further product information.

Wherever off-highway vehicles are at work, so is Danfoss.

We offer expert worldwide support for our customers, ensuring the best possible solutions for outstanding performance. And with an extensive network of Global Service Partners, we also provide comprehensive global service for all of our components.

Please contact the Danfoss Power Solution representative nearest you.

Comatrol

www.comatrol.com

Schwarzmueller-Inverter

www.schwarzmueller-inverter.com

Turolla

www.turollaocg.com

Valmova

www.valmova.com

Hydro-Gear

www.hydro-gear.com

Daikin-Sauer-Danfoss

www.daikin-sauer-danfoss.com

Local address:

Danfoss Power Solutions (US) Company

2800 East 13th Street
Ames, IA 50010, USA
Phone: +1 515 239 6000

Danfoss Power Solutions GmbH & Co. OHG

Krokamp 35
D-24539 Neumünster, Germany
Phone: +49 4321 871 0

Danfoss Power Solutions ApS

Nordborgvej 81
DK-6430 Nordborg, Denmark
Phone: +45 7488 2222

Danfoss Power Solutions Trading (Shanghai) Co., Ltd.

Building #22, No. 1000 Jin Hai Rd
Jin Qiao, Pudong New District
Shanghai, China 201206
Phone: +86 21 3418 5200

Danfoss can accept no responsibility for possible errors in catalogues, brochures and other printed material. Danfoss reserves the right to alter its products without notice. This also applies to products already on order provided that such alterations can be made without changes being necessary in specifications already agreed. All trademarks in this material are property of the respective companies. Danfoss and the Danfoss logotype are trademarks of Danfoss A/S. All rights reserved.