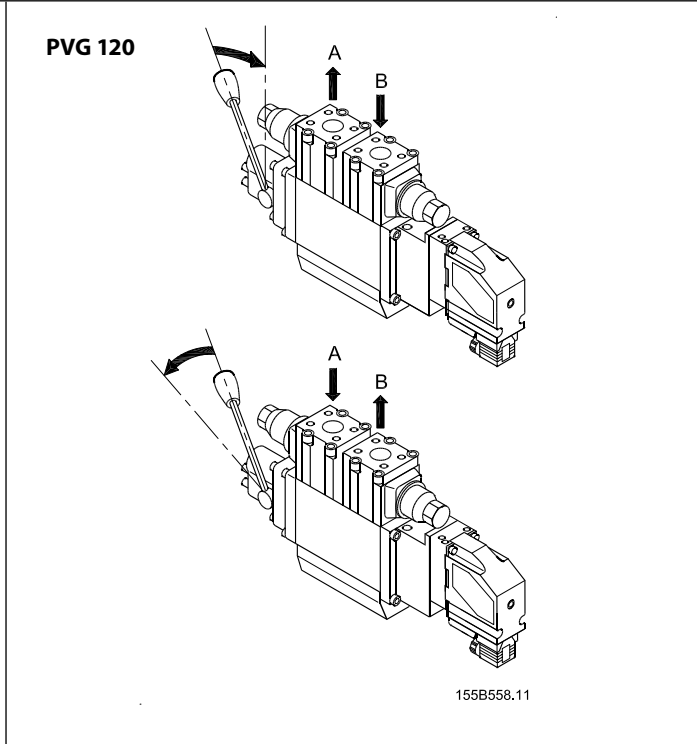
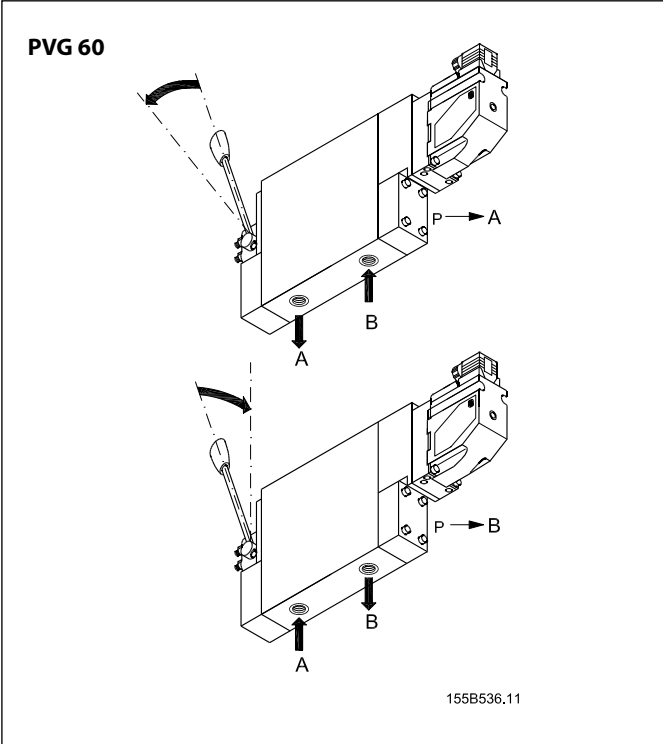


Installation Guide

Actuating Module PVE serie 4 for PVG 60 and PVG 120

155R9960



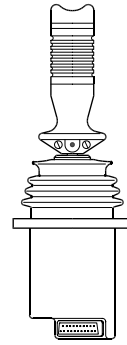
155R9960

Proportional aktivering
Proportional activation
Proportionale Betätigung
Commande proportionnelle

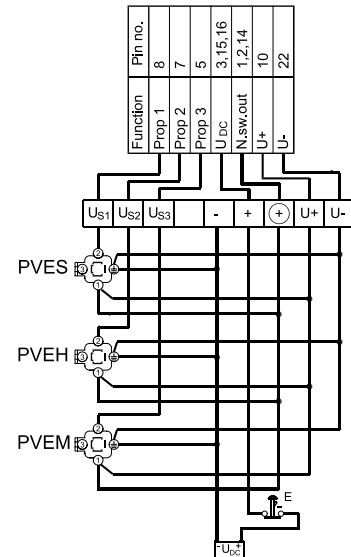
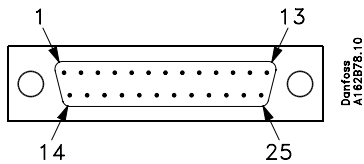
U_{DC}	11 - 32 V $\overline{\overline{=}}$	
Pin	1 (U+)	2 (U_s)
Q : P \rightarrow A	U_{DC}	$(0.5 \rightarrow 0.25) \times U_{DC}$
Q : P \rightarrow B	U_{DC}	$(0.5 \rightarrow 0.75) \times U_{DC}$
Neutral	U_{DC}	$0.5 \times U_{DC}$

On/off aktivering
On/off activation
Ein-/Aus-Betätigung
Commande tout ou rien

U_{DC}	11 - 15 V $\overline{\overline{=}}$		22 - 30 V $\overline{\overline{=}}$	
Pin	1 (A)	2 (B)	1 (A)	2 (B)
Q : P \rightarrow A	U_{DC}	0	U_{DC}	0
Q : P \rightarrow B	0	U_{DC}	0	U_{DC}
Neutral	0	0	0	0



Elektrisk system
Electrical system
Elektrisches System
Système électrique



155B584.10

PVE-proportional actuation

Kontroller max.håndtagsvanding i neutralstilling

1. Sæt hydraulisk tryk på systemet
2. Tilslut forsyningsspænding (U_{DC}) (Signalsspænding = $0.5 * U_{DC}$)

Check max. lever travel in neutral position

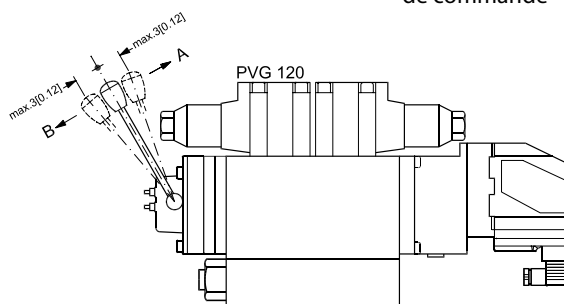
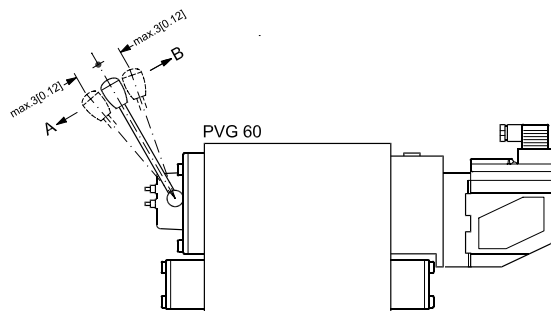
1. Make sure the system is supplied with hydraulic power
2. Connect supply voltage (U_{DC}) (Signal voltage = $0.5 * U_{DC}$)

Max. Hebelwanderung in Neutralstellung kontrollieren

1. Das System unter hydraulischen Druck setzen
2. Versorgungsspannung (U_{DC}) anschliessen (Signalspannung = $0.5 * U_{DC}$)

Contrôler la course maximale du manipulateur en position neutre

1. S'assurer que le circuit hydraulique est fourni d'huile
2. Connecter la tension d'alimentation (U_{DC}) (Tension de commande = $0.5 * U_{DC}$)



155B561.12

Justering af PVE når max. håndtagsvanding overskrides

Adjustment of PVE when max. lever travel is exceeded

Justierung der PVE wenn max. Hebelwanderung überschritten wird

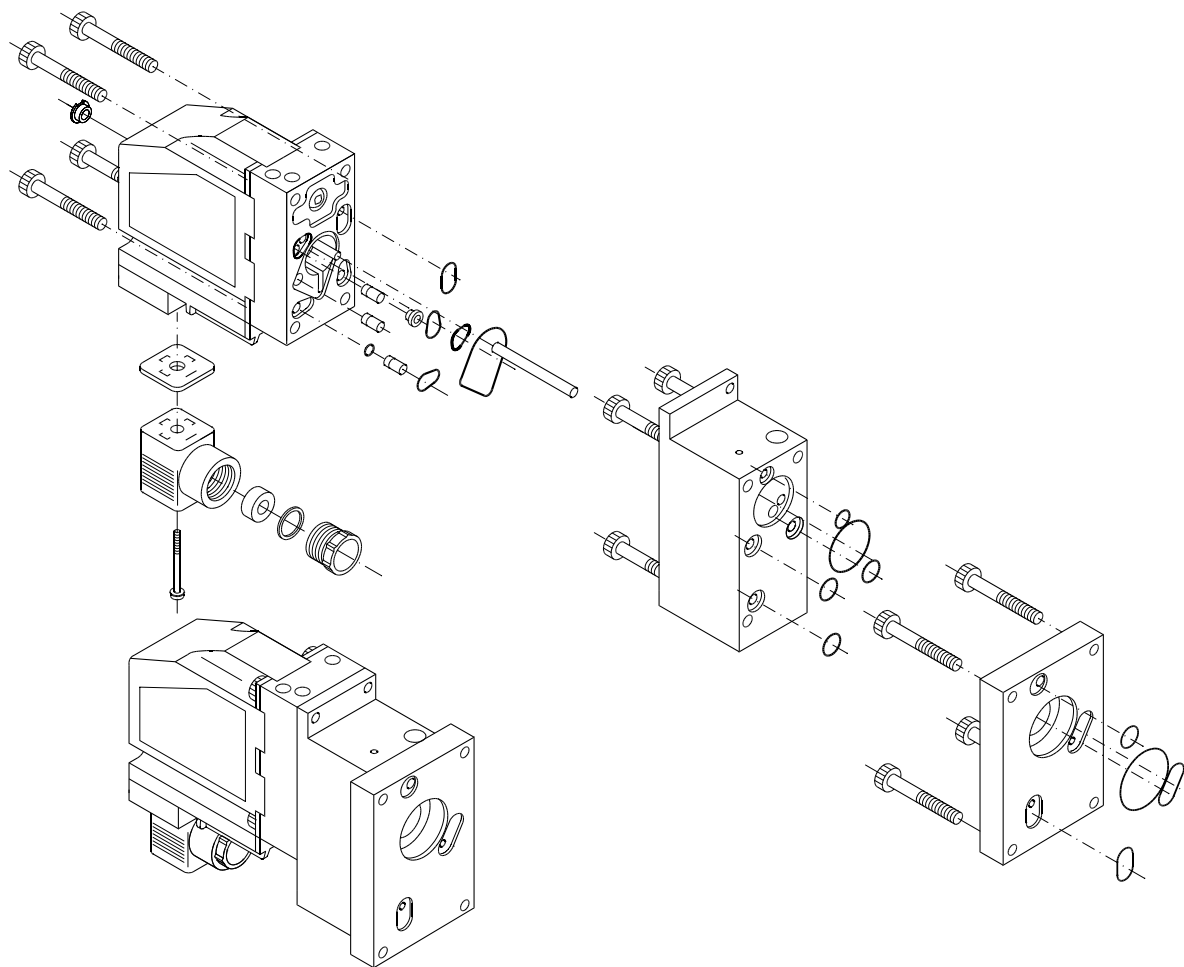
Ajustage de la PVE quand la course maximale est excédée

Overskridelse i Lever travel exceeded in Überschreitung der Hebelwanderung in La course maximale es excédée du	PVG 60	PVG 120	Omdrejningsretning for justering af positionstransducer Direction of rotation for adjustment of position transducer Drehrichtung beim justieren des Positionstransducers Sens de rotation pour l'ajustage du transducteur de position
A-retning Direction A A-Richtung Sense A	 155B272.10	 V310093.A	 157-166.11.10
B-retning Direction B B-Richtung Sense B	 155B274.10	 V310093B.A	 157-166.11.20

Transducer omdrejning Turn of transducer Transducerdrehung Rotation du transducteur	Håndtagsbevægelse Movement of lever Hebelweg Mouvement du manipulateur
1/4	1.5 mm [0.06 in]
1/2	3.0 mm [0.12 in]
3/4	4.5 mm [0.18 in]

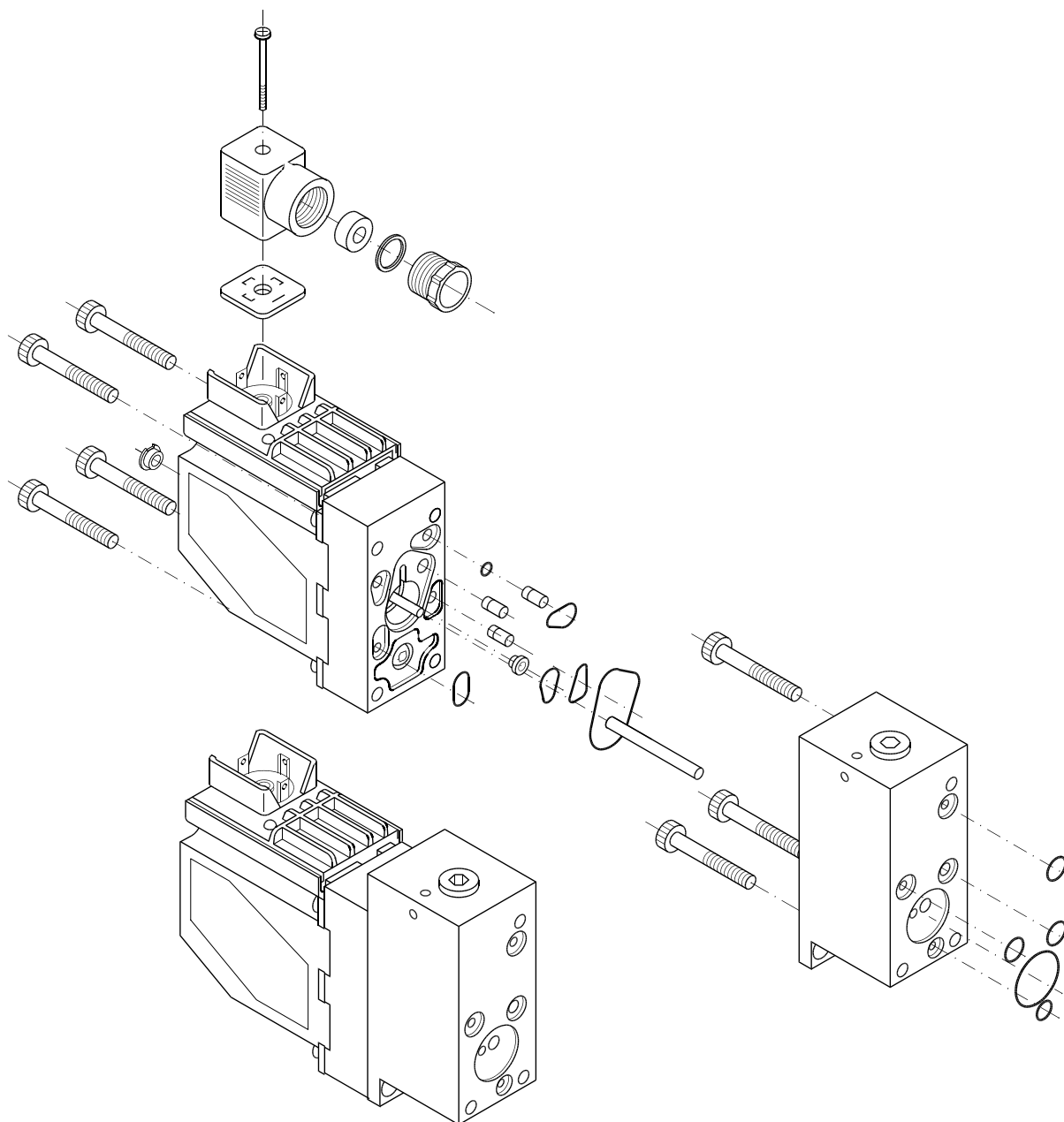
R: Fjern prop
R: Remove plug
R: Stopfen entfernen
R: Enlever le bouchon

Montage af PVE til PVG 120
Installation of PVE for PVG 120
Montage von PVE an PVG 120
Installation de PVE au PVG 120



155B560.11

Montage af PVE til PVG 60
Installation of PVE for PVG 60
Montage von PVE an PVG 60
Installation de PVE au PVG 60



155B559.12