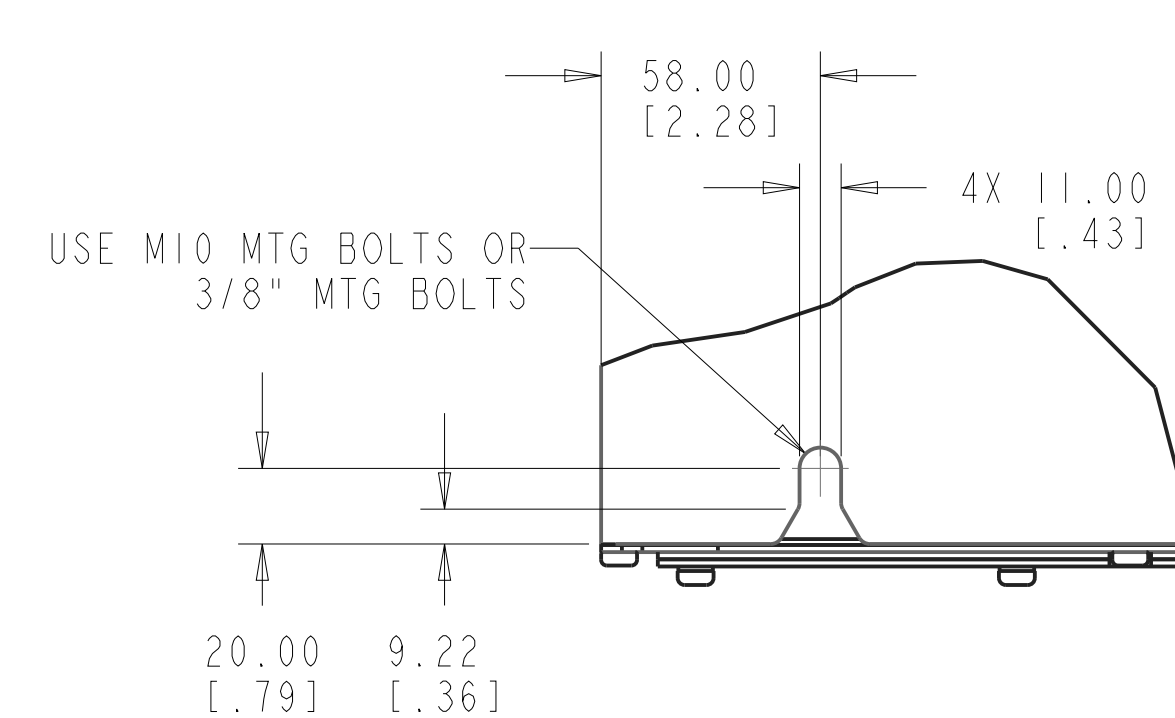
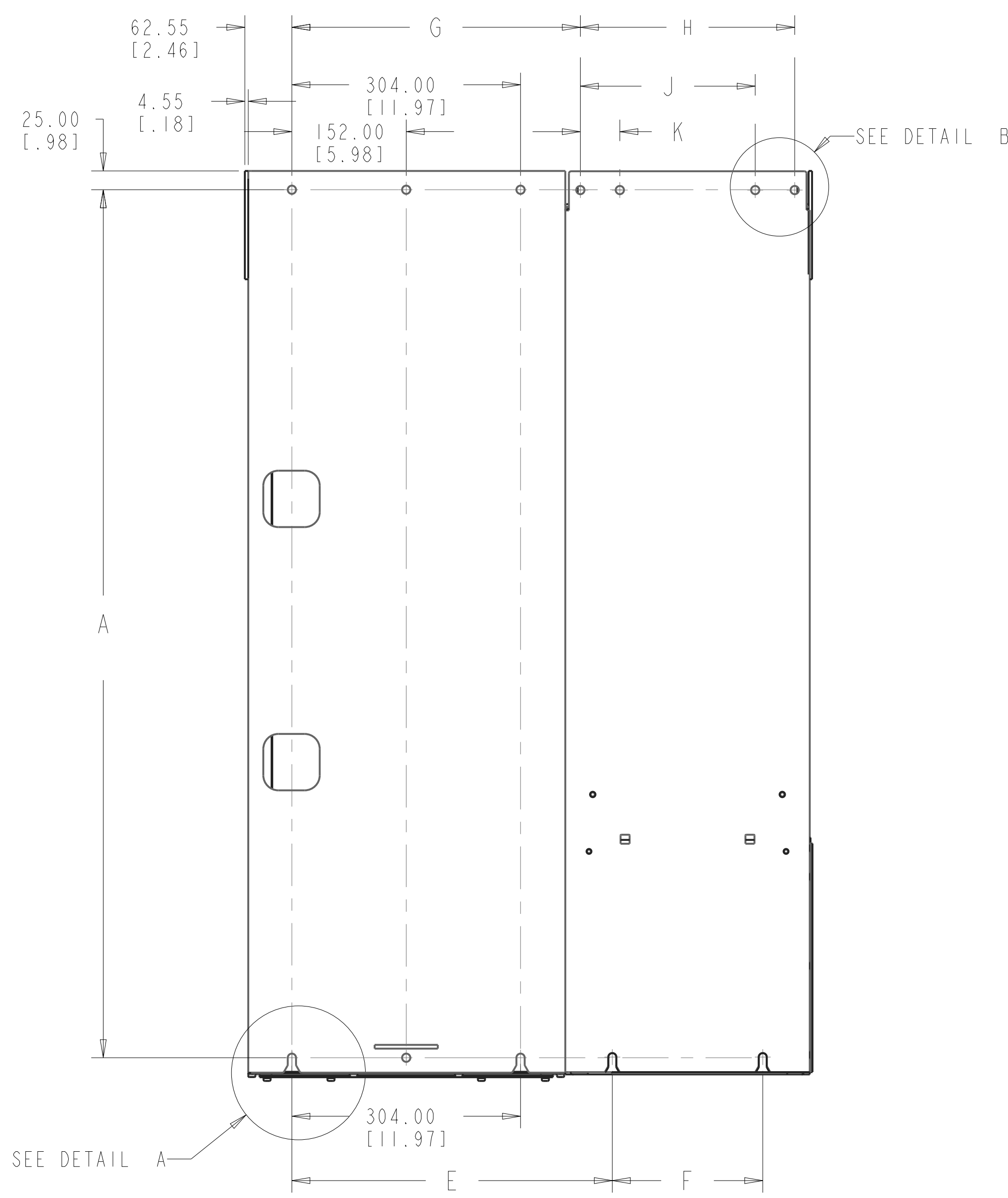
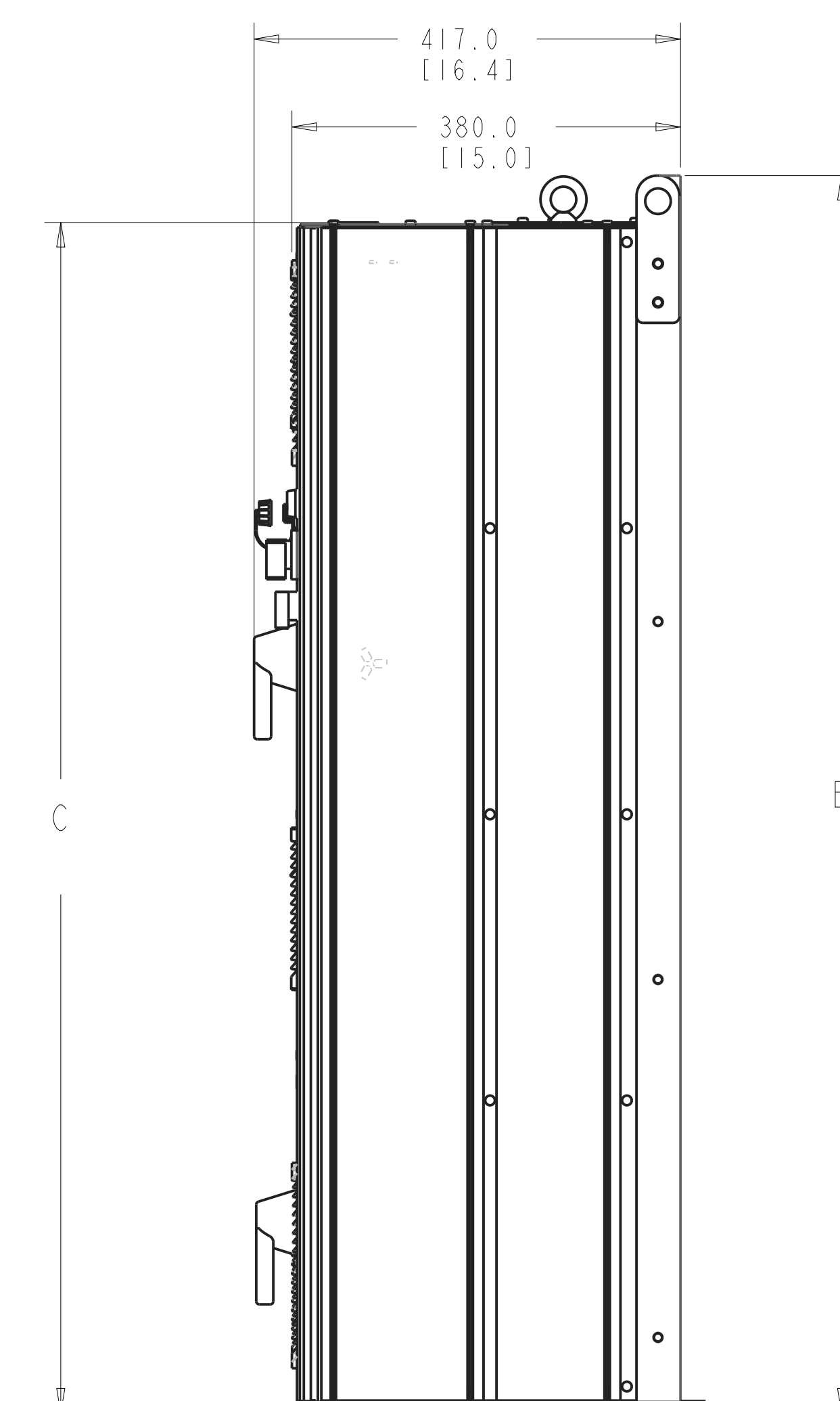
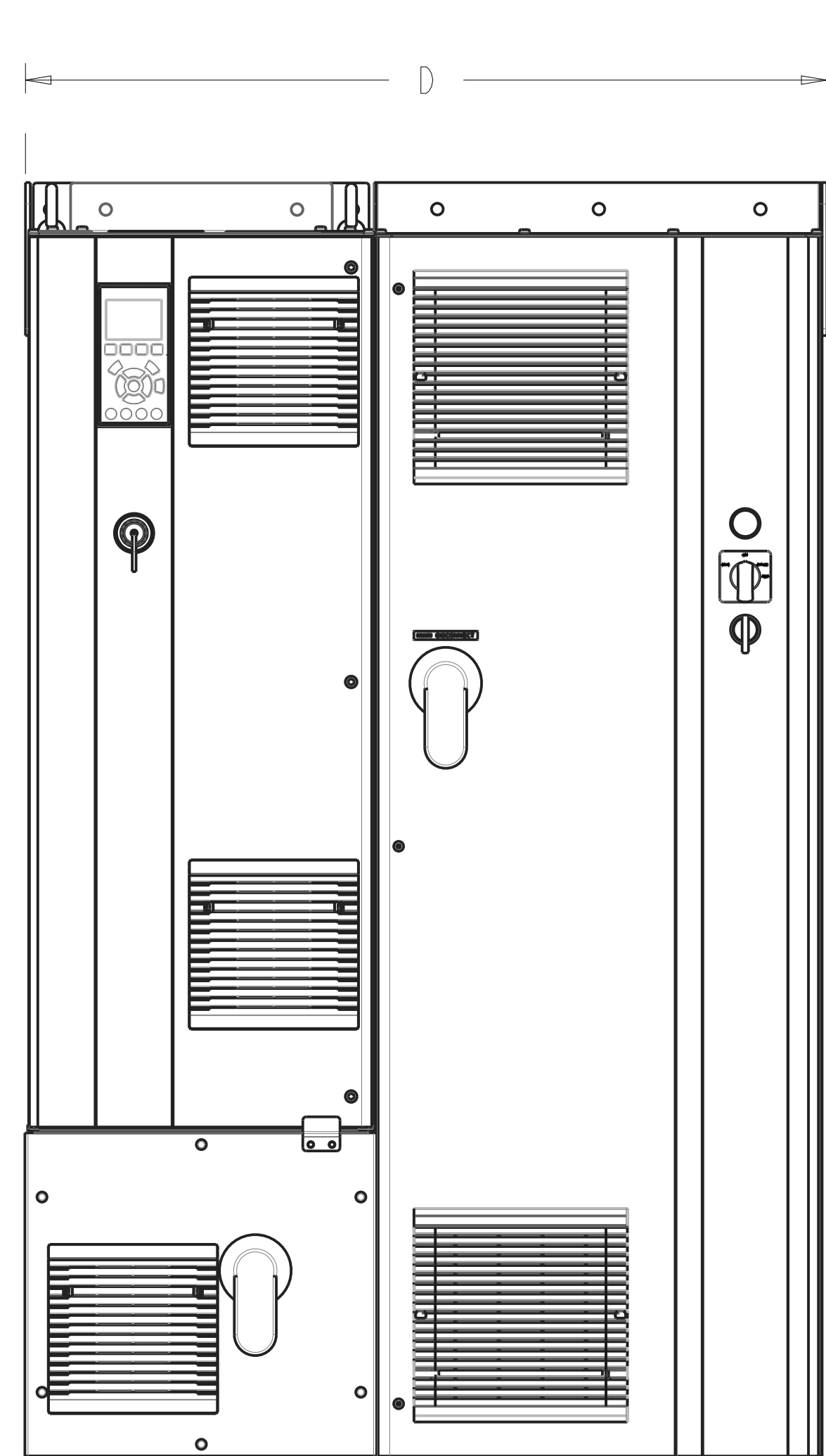
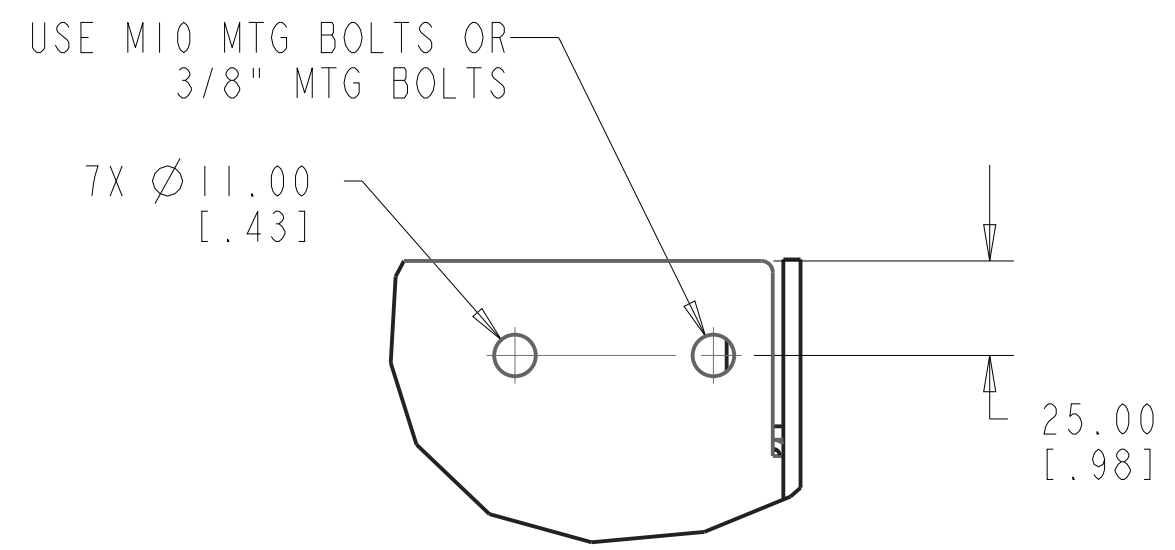


- NOTICE -
 THIS DOCUMENT CONTAINS PROPRIETARY INFORMATION OF DANFOSS DRIVES. IT IS LOANED BY DANFOSS DRIVES SUBJECT TO THE CONDITIONS THAT IT AND THE INFORMATION EMBODIED THEREIN SHALL BE USED ONLY FOR RECORD AND REFERENCE PURPOSES. SHALL NOT BE USED OR CAUSED TO BE USED IN ANY WAY PREJUDICIAL TO THE INTERESTS OF DANFOSS DRIVES. SHALL NOT BE REPRODUCED OR COPIED IN WHOLE OR IN PART OR DISCLOSED TO ANYONE WITHOUT THE DIRECT WRITTEN PERMISSION OF DANFOSS DRIVES, AND SHALL BE RETURNED UPON REQUEST.

| REVISION HISTORY | | | |
|------------------|-----------------|----------|------------|
| REV | ECN NUMBER | ENTRY BY | DATE |
| 001 | INITIAL RELEASE | DK | 12/29/12 |
| 002 | ECNSPI30?? | JMH | 04/10/2013 |



DETAIL A
 LOWER MOUNTING HOLES
 SCALE 0.500



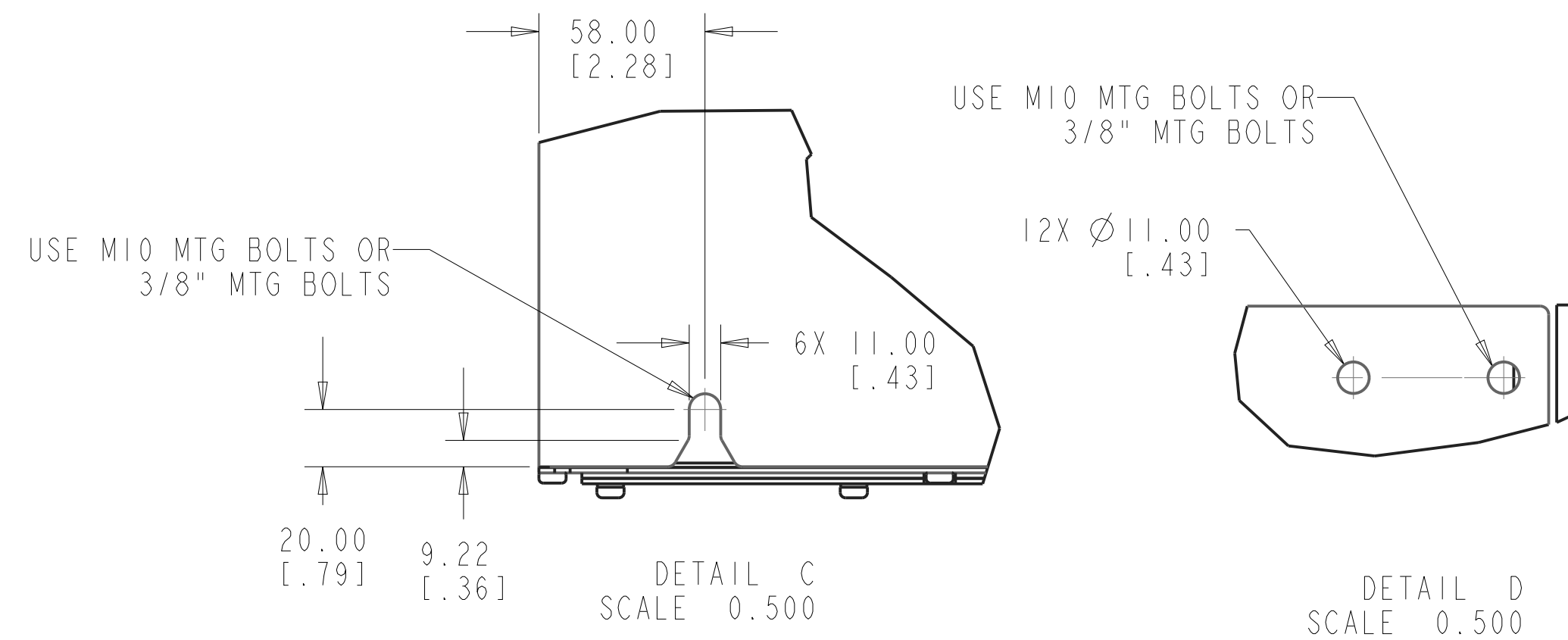
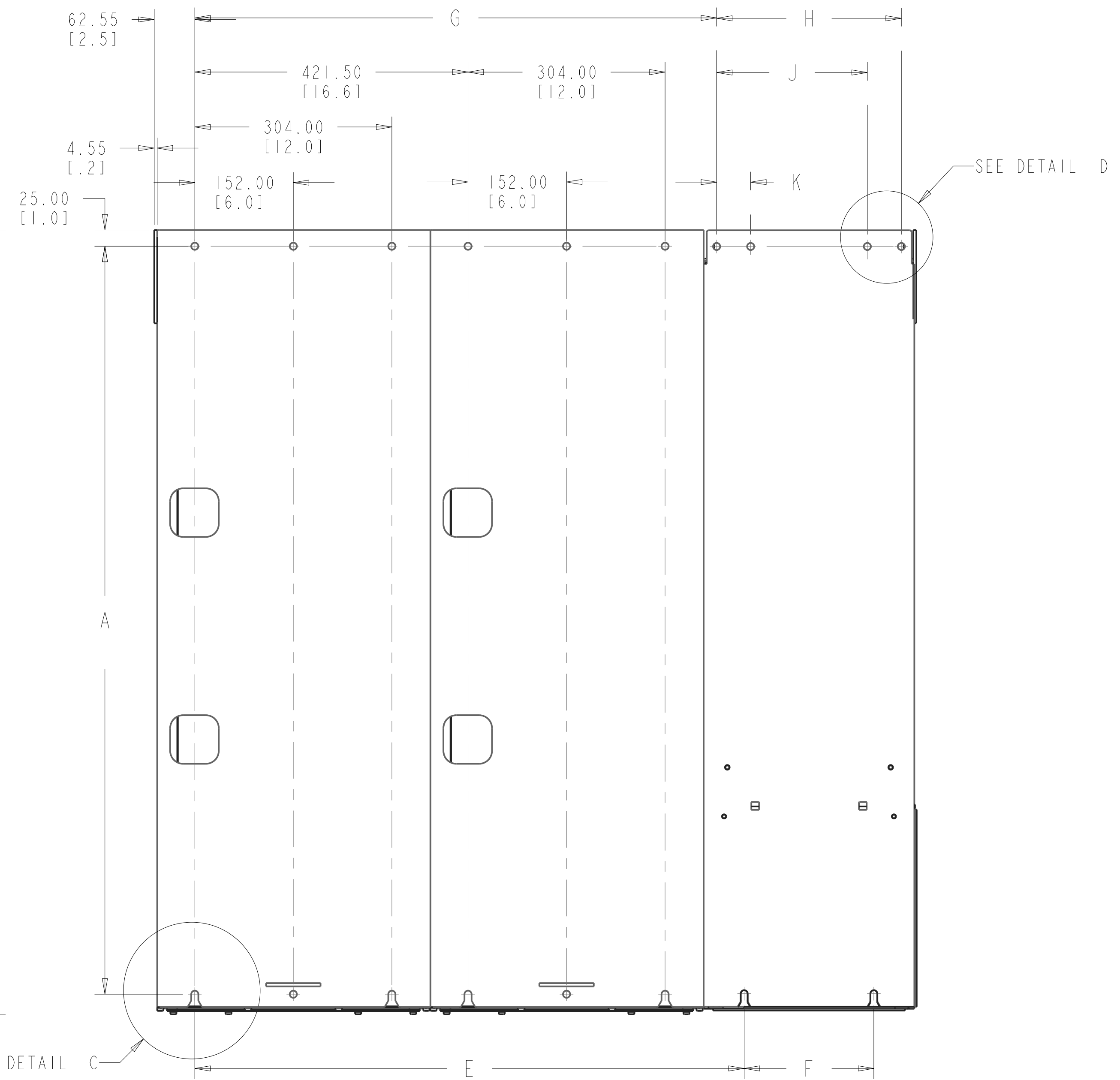
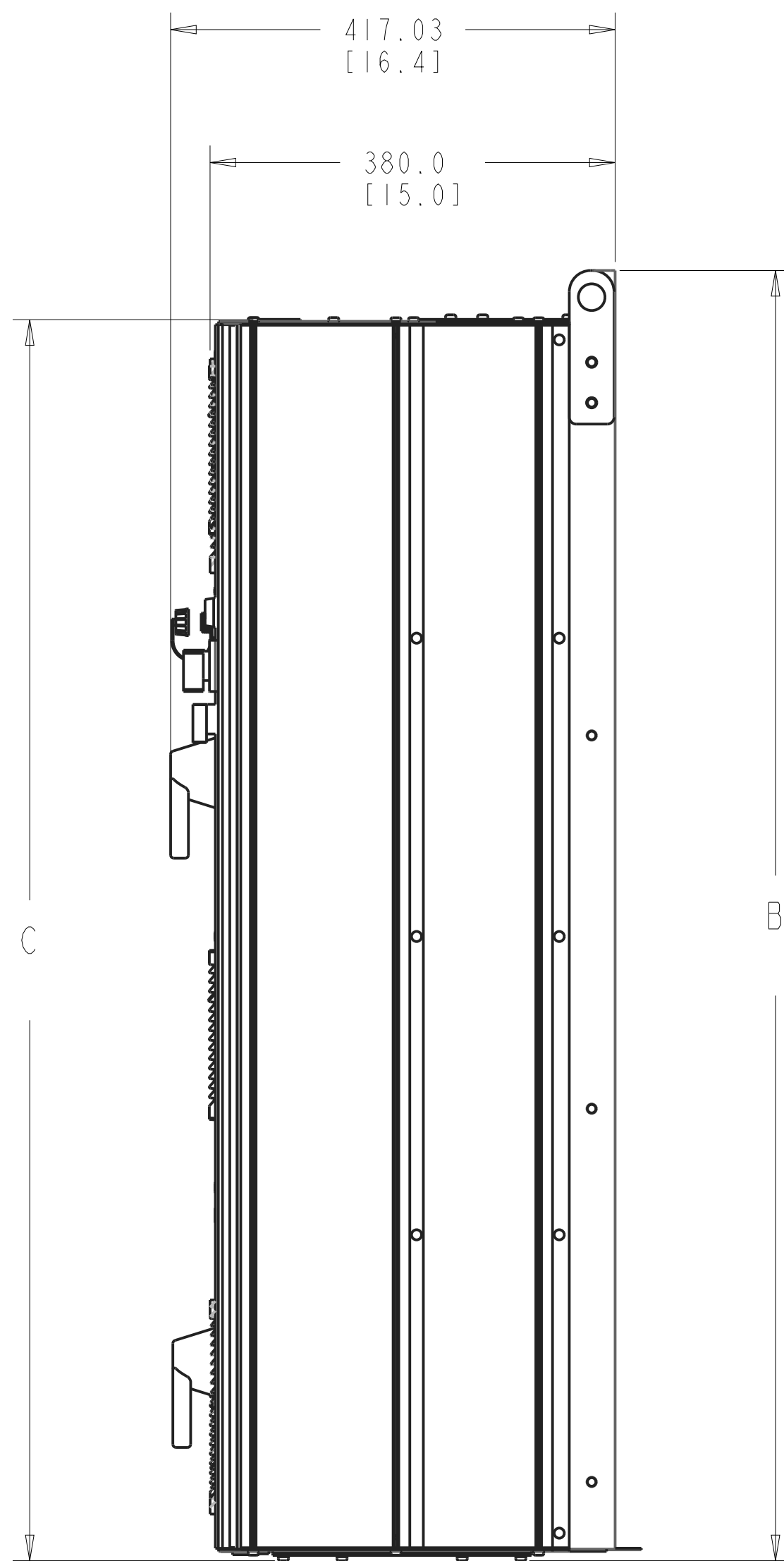
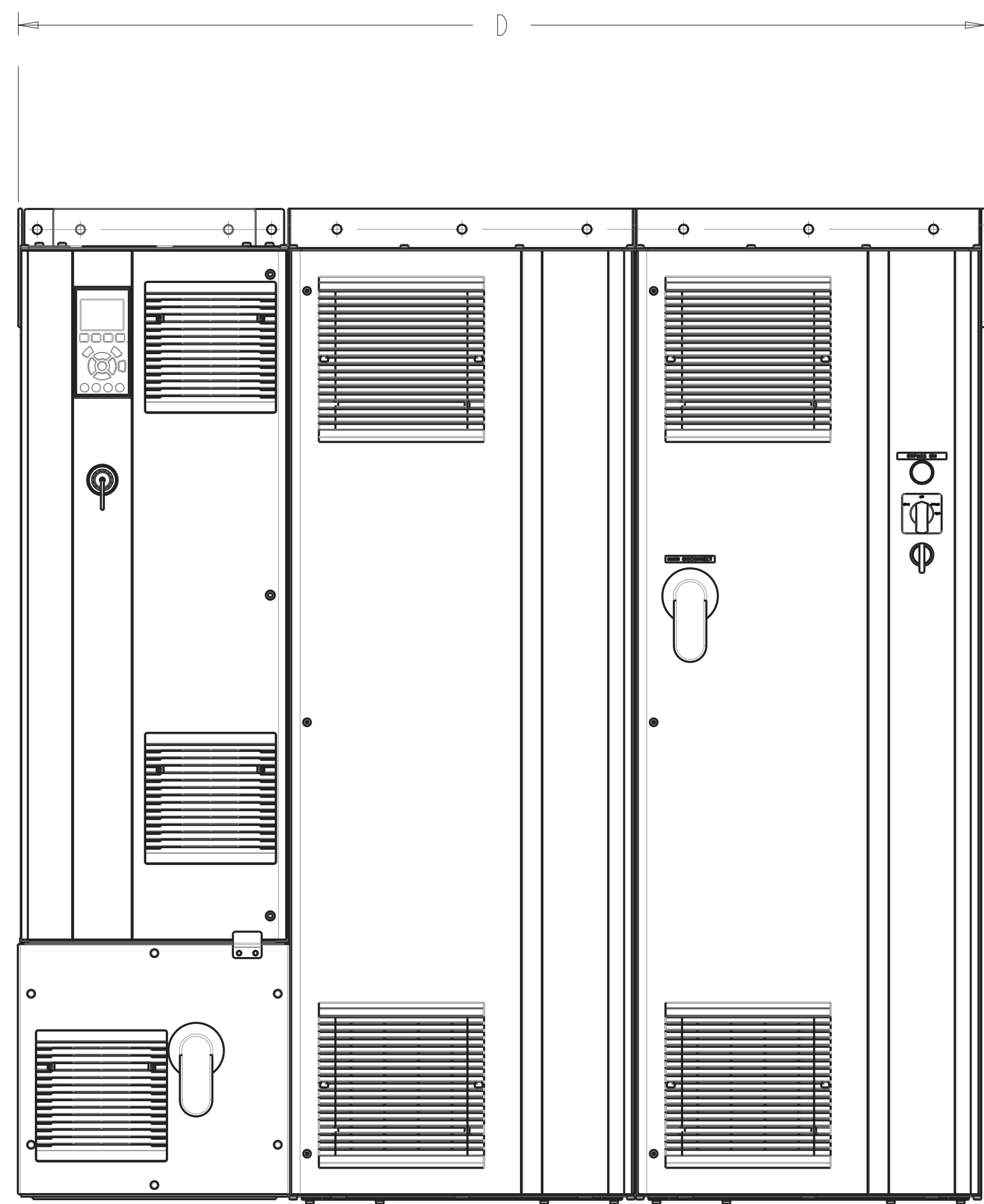
DETAIL B
 TOP MOUNTING HOLES
 SCALE 0.500

| | TIER 2 DIMENSIONS | | | | | | | | | |
|----------|-------------------|-------------------|------------------|-----------------|-----------------|------------------|-----------------|-----------------|-----------------|---------------|
| | A | B | C | D | E | F | G | H | J | K |
| D1 FRAME | 1154.0 [45.4] | 1209.9 [47.6] | 1163.7 [45.8] | 754.1 [29.7] | 426.0 [16.8] | 200.0 [7.9] | 383.5 [15.1] | 285.0 [11.2] | 232.5 [9.2] | 52.5 [2.1] |
| D2 FRAME | 1534.5 [60.4] | 1588.2 [62.53] | 1542.8 [60.7] | 850.6 [33.5] | 438.0 [17.2] | 271.0 [10.67] | 386.5 [15.2] | 374.0 [14.7] | 327.0 [12.9] | 47.0 [1.9] |

| D-FRAME MAX WEIGHTS | |
|---------------------|---------------------|
| | TIER 2 |
| D1 FRAME | 420 lbs [190 kg] |
| D2 FRAME | 630 lbs [286 kg] |

- NOTES:
1. THIS ENCLOSURE CONFIGURATION IS USED FOR ALL OPTION COMBINATIONS EXCEPT BYPASS WITH DV/DT FILTER OR LINE REACTOR OR CONTACT MOTOR SELECT OR DUAL MOTOR.
 2. AT MINIMUM THE TWO OUTSIDE LIFTING POINTS ARE REQUIRED WHEN HANDLING THIS UNIT.

| | | | | |
|---|------------|----------|----------|---|
| UNLESS OTHERWISE SPECIFIED INTERPRET DIM. AND TOL. PER ASME Y14.5M-1994 .XX±0.4 .XX±0.20 ±0.5 DIM. ARE IN MILLIMETERS WEIGHTS ARE IN KILOGRAMS THIRD ANGLE PROJECTION | PROPERTIES | | | 4401 N. BELL SCHOOL RD. LOVES PARK, ILLINOIS 61111 USA (815) 639-9600 FAX (815) 639-9000 |
| | MATERIAL | | | |
| | FINISH | | | |
| | THICKNESS | | | |
| | APPROVALS | INITIALS | DATE | TITLE |
| | DRAWN | JMH | 08/29/12 | INSTALLATION DRAWING, P650, D1 D2 TIER 2 / TIER 3 |
| | CHECKED | | | SIZE D |
| | ENGR | | | SCALE 0.200 |
| | | | | MODEL P650-3-ASSY |
| | | | | DRAWING NO. 174N8666 |
| | | | | REV 002 |
| | | | | SHEET 1 OF 3 |



| | TIER 3 DIMENSIONS | | | | | | | | | |
|----------|-------------------|-------------------|------------------|------------------|-----------------|------------------|-----------------|-----------------|-----------------|---------------|
| | A | B | C | D | E | F | G | H | J | K |
| D1 FRAME | 1154.0 [45.4] | 1209.9 [47.6] | 1163.7 [45.8] | 1175.6 [46.3] | 847.5 [33.4] | 200.0 [7.9] | 805.0 [31.7] | 285.0 [11.2] | 232.5 [9.2] | 52.5 [2.1] |
| D2 FRAME | 1534.5 [60.4] | 1588.2 [62.53] | 1542.8 [60.7] | 1272.1 [50.1] | 859.5 [33.8] | 271.0 [10.67] | 808.0 [31.8] | 374.0 [14.7] | 327.0 [12.9] | 47.0 [1.9] |

| D-FRAME MAX WEIGHTS | |
|---------------------|----------------------|
| | TIER 3 |
| D1 FRAME | 585 lbs [265 kg] |
| D2 FRAME | 1070 lbs [486 kg] |

- NOTES:
- THIS ENCLOSURE CONFIGURATION IS USED FOR ALL OPTION COMBINATIONS CONTAINING BYPASS WITH DV/DT FILTER OR LINE REACTOR OR CONTACT MOTOR SELECT OR DUAL MOTOR.
 - AT MINIMUM THE TWO OUTSIDE LIFTING POINTS ARE REQUIRED WHEN HANDLING THIS UNIT.

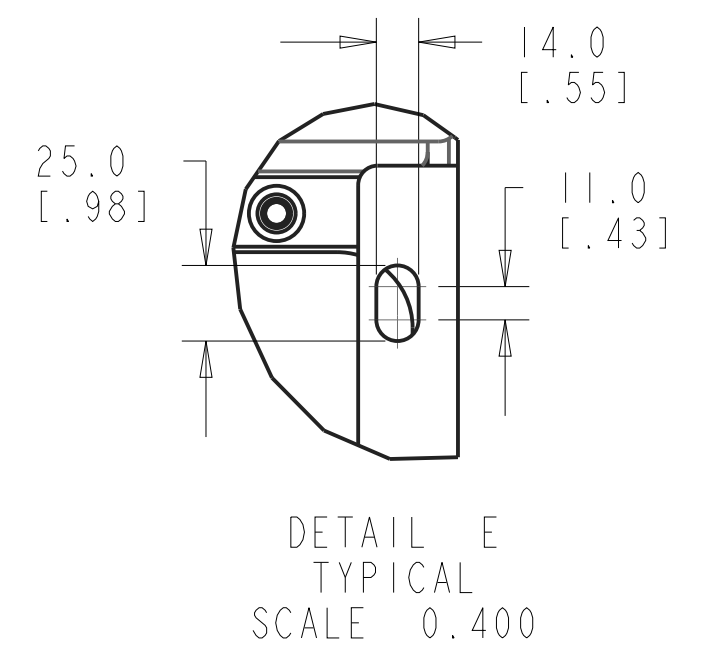
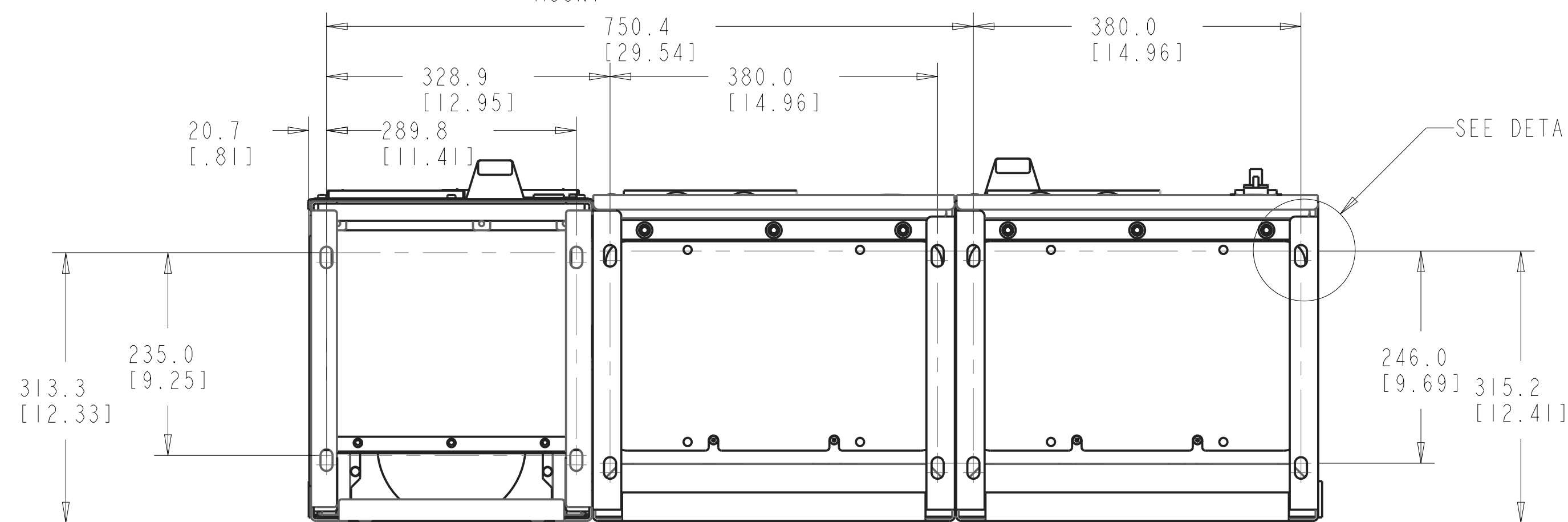
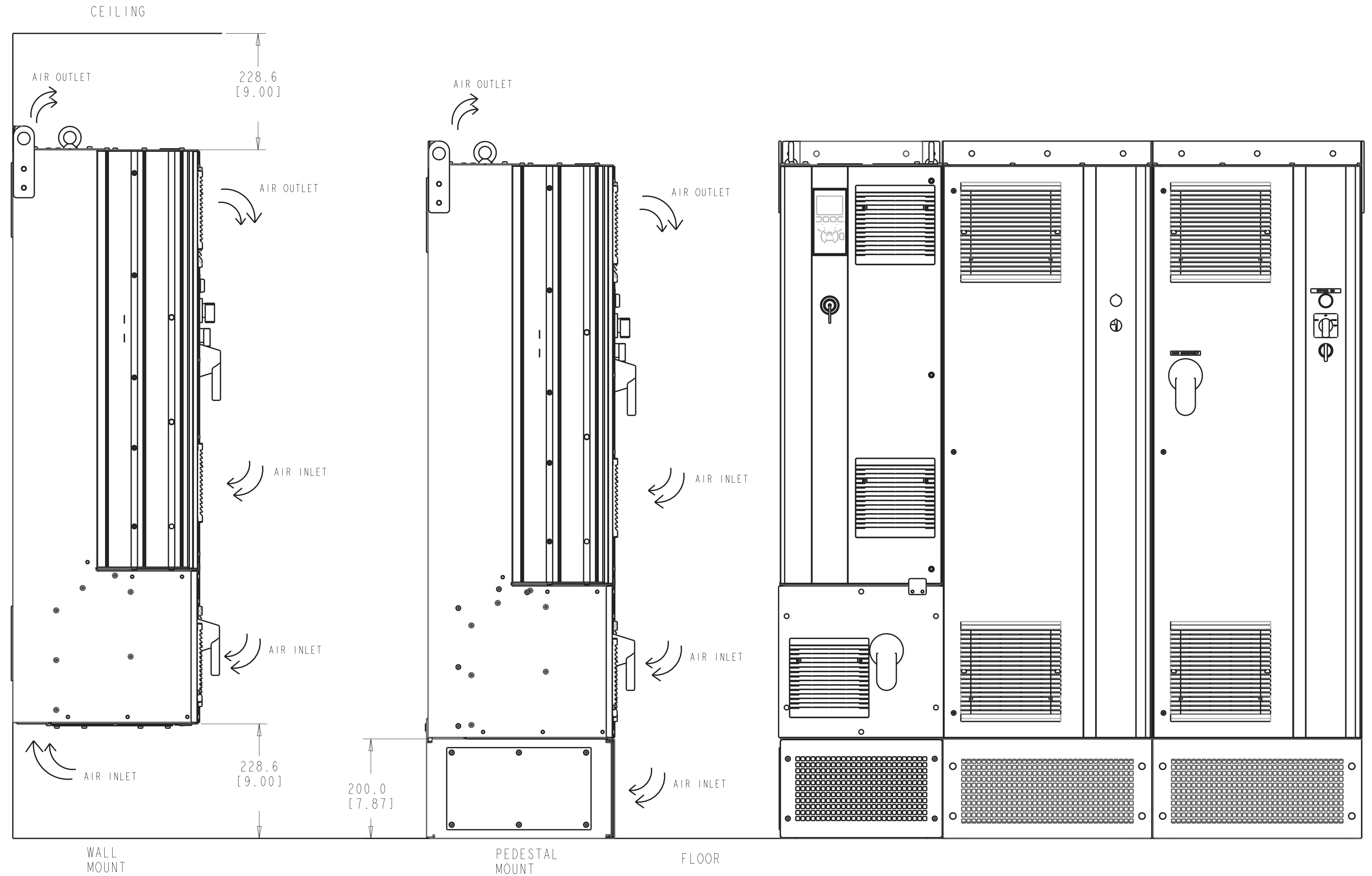
| TITLE | | |
|---|-------------------------|-----------------|
| INSTALLATION DRAWING, P650, D1 D2 TIER 2 / TIER 3 | | |
| SIZE D | MODEL P650-3-ASSY | REV 002 |
| SCALE 0.200 | DRAWING NO. 174N8666 | SHEET 2 OF 3 |

| 460V | SERIES | | FRAME |
|------|--------------|----------------|-------|
| | FC 302 | FC 102/202 | |
| | 5000 (HO/NO) | 4000/6000/8000 | |
| HP | 125/150 | 150 | D1 |
| KW | 90/110 | 110 | D1 |
| HP | 150/200 | 200 | D1 |
| KW | 110/132 | 132 | D1 |
| HP | 200/250 | 250 | D2 |
| KW | 132/160 | 160 | D2 |
| HP | 250/300 | 300 | D2 |
| KW | 160/200 | 200 | D2 |
| HP | 300/350 | 350 | D2 |
| KW | 200/250 | 250 | D2 |

| 600V | SERIES | | FRAME |
|------|--------------|----------------|-------|
| | FC 302 | FC 102/202 | |
| | 5000 (HO/NO) | 4000/6000/8000 | |
| HP | 125/150 | 150 | D1 |
| KW | 90/110 | 110 | D1 |
| HP | 150/200 | 200 | D1 |
| KW | 110/132 | 132 | D1 |
| HP | 200/250 | 250 | D2 |
| KW | 132/160 | 160 | D2 |
| HP | 250/300 | 300 | D2 |
| KW | 160/200 | 200 | D2 |
| HP | 300/350 | 350 | D2 |
| KW | 200/250 | 250 | D2 |
| HP | 350/400 | 400 | D2 |
| KW | 250/315 | 315 | D2 |

| PEDESTAL KIT - REQUIRED ASSEMBLIES | | | | | | |
|------------------------------------|----------------|-----|-----------------------|-----|-----------------------|-----|
| | DRIVE PEDESTAL | QTY | TIER CABINET PEDESTAL | QTY | BOTTOM PLATE ASSEMBLY | QTY |
| D1 TIER2 (NEMA 1) | 176F3452 | 1 | 176F1827 | 1 | 174N8724 | 1 |
| D1 TIER2 (NEMA 12) | 176F3452 | 1 | 176F1827 | 1 | 174N8674 | 1 |
| D1 TIER3 (NEMA 1) | 176F3452 | 1 | 176F1827 | 2 | 174N8724 | 1 |
| D1 TIER3 (NEMA 12) | 176F3452 | 1 | 176F1827 | 2 | 174N8674 | 1 |
| D2 TIER2 (NEMA 1) | 176F3539 | 1 | 176F1827 | 1 | 174N8729 | 1 |
| D2 TIER2 (NEMA 12) | 176F3539 | 1 | 176F1827 | 1 | 174N8717 | 1 |
| D2 TIER3 (NEMA 1) | 176F3539 | 1 | 176F1827 | 2 | 174N8729 | 1 |
| D2 TIER3 (NEMA 12) | 176F3539 | 1 | 176F1827 | 2 | 174N8717 | 1 |

AIR FLOW SPACING REQUIREMENTS



| | | | |
|---|-------------|--------|--|
| TITLE | | | |
| INSTALLATION DRAWING, P650, D1 D2 TIER 2 / TIER 3 | | | |
| SIZE | MODEL | REV | |
| D | P650-3-ASSY | 002 | |
| SCALE | DRAWING NO. | SHEET | |
| 0.200 | 174N8666 | 3 OF 3 | |