

ENGINEERING
TOMORROW



Danfoss ELIMINATOR® 1.5 in³ filter drier

Keep the **smallest** refrigeration applications **dry, clean** and **safe**

Designed for Glass Door Merchandisers and other light commercial applications.

Works with
pressures up to

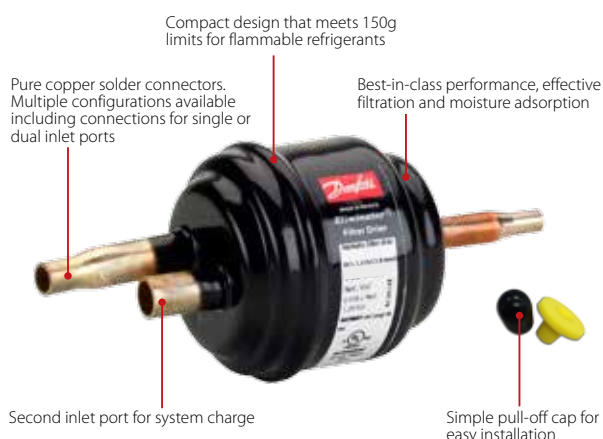
46 bar
(667 psig)



Robust, compact and reliable

Filter driers keep refrigeration systems dry and clean to protect against corrosion and other contamination that may impede system performance or result in breakdown of the refrigeration unit. An effective filter drier also ensures that oil and refrigerant do not decompose thus extending system performance and life.

Danfoss ELIMINATOR® 1.5 in³ filter drier has been optimized for glass door merchandisers and other light commercial applications. It is specially designed to minimize the amount of refrigeration system charge and assists designers in meeting the strict 150g system limits when using flammable refrigerants such as R290 (propane). The ELIMINATOR® filter drier has a solid core that yields a fast adsorption rate and no loose dessicant which can add unwanted particles to the refrigerant. It is also designed for superior flow capacity as well as low pressure drop and these combined benefits minimize operation and maintenance costs.

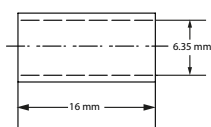


Technical Data

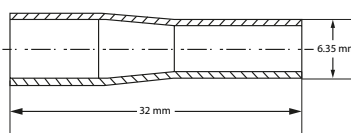
Type	DML 1.52x2/2s	DCL 1.52XL/2.8mm s
Weight	0.12 Kg / 0.26 lbs	0.12 Kg / 0.26 lbs
Refrigerant	HCFC; HFC; HC; HFO	
Paint	Powder coating gloss 90, RAL 9005 (Black)	
Max. Working Pressure/PB	46 bar / 667 psig (fatigue test)	
Solid Core:		
Volume	24 cm ³ / 1.49 in ³	
Surface Area	46 cm ² / 7.20 in ²	
Net Volume	0.036 l / 1.21 f oz US	
Shell Volume	0.050 l / 1.70 f oz US	
Media Temperature	-40 °C → +70 °C / -40 °F → 160 °F	
Core Composition	100% Molecular Sieve	80% Molecular Sieve 20% Activated alumina
Water adsorption capacity (kg of ref. / drops H ₂ O):		
R134a	t _r =24°C: 2.9 kg / 58 H ₂ O t _r =52°C: 2.7 kg / 55 H ₂ O	t _r =24°C: 2.3 kg / 45 H ₂ O t _r =52°C: 2.1 kg / 43 H ₂ O
R404A	t _r =24°C: 3.1 kg / 61 H ₂ O t _r =52°C: 3.0 kg / 57 H ₂ O	t _r =24°C: 2.4 kg / 47 H ₂ O t _r =52°C: 2.3 kg / 45 H ₂ O
R32	t _r =24°C: 2.7 kg / 51 H ₂ O t _r =52°C: 2.5 kg / 46 H ₂ O	t _r =24°C: 2.1 kg / 40 H ₂ O t _r =52°C: 1.9 kg / 36 H ₂ O
R290	t _r =24°C: 3.5 kg / 54 H ₂ O t _r =52°C: 2.8 kg / 44 H ₂ O	t _r =24°C: 2.8 kg / 42 H ₂ O t _r =52°C: 2.2 kg / 34 H ₂ O
R600a	t _r =24°C: 3.2 kg / 61 H ₂ O t _r =52°C: 2.6 kg / 49 H ₂ O	t _r =24°C: 2.5 kg / 48 H ₂ O t _r =52°C: 2.0 kg / 38 H ₂ O
Flow capacity at Δp = 0.07 bar / 1psi:		
R134a	1.7 Ton / 5.97 kW	1.7 Ton / 5.97 kW
R404A	1.2 Ton / 4.21 kW	0.8 Ton / 2.81 kW
R32	2.5 Ton / 8.78 kW	1.2 Ton / 4.21 kW
R290	2.0 Ton / 7.02 kW	1.0 Ton / 3.51 kW
R600a	2.1 Ton / 7.37 kW	1.0 Ton / 3.51 kW

Connector Options

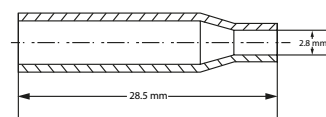
1/4" ODF Std



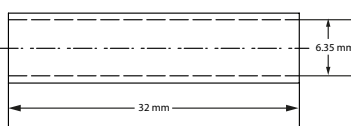
1/4" ODM XL



2.8 mm ODF XL



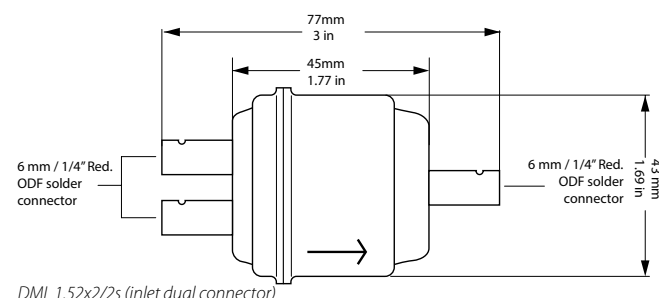
1/4" ODF XL



Ordering

Type	Connection, ODF		Code number	Quantity (Industrial pack only)
	Inlet	Outlet		
DML 1.52x2/2s (inlet dual connector)	¼ in	¼ in	023Z8250	36 pcs
DCL 1.52XL/2.8mm s	¼ in	2.8 mm	023Z8252	36 pcs

*For other connection configurations and refrigerants data, please contact your Danfoss Sales Representative



Danfoss can accept no responsibility for possible errors in catalogues, brochures and other printed material. Danfoss reserves the right to alter its products without notice. This also applies to products already on order provided that such alterations can be made without subsequential changes being necessary in specifications already agreed. All trademarks in this material are property of the respective companies. Danfoss and the Danfoss logotype are trademarks of Danfoss A/S. All rights reserved.