

Installation guide

Filter drier, shell with cross gasket

Type DCR

023R9543

023R9543

Refrigerants:

R1234ze, R125, R134a, R22/R407C, R23, R404A, R407A, R407F, R410A, R438A, R448A, R449A, R449B, R450A, R452A, R507A, R513A

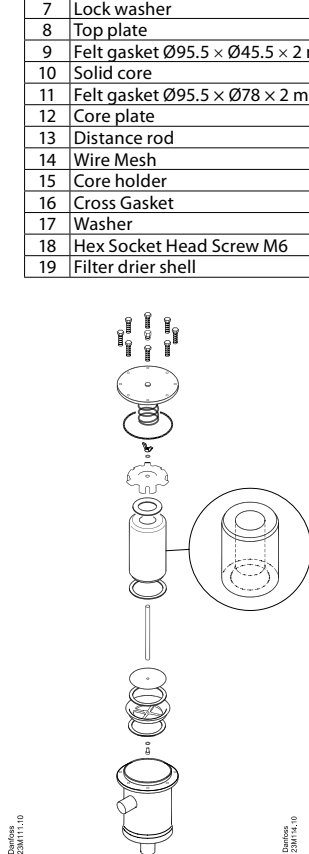
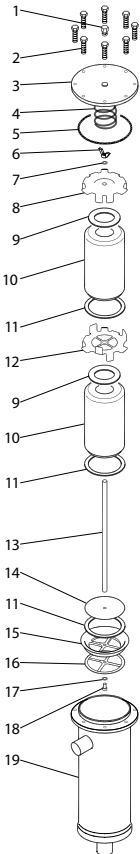
For other refrigerants, please contact Danfoss.

Media Temperature:

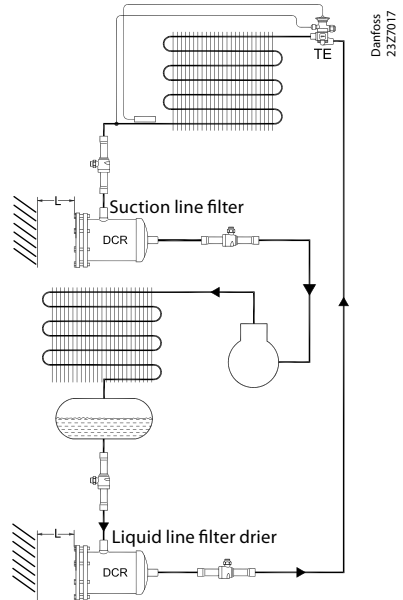
-40 - 70 °C / -40 - 160 °F

Design

Pos.	Description
1	Plug 1/4 inch NPT
2	Top cover bolts M8 × 35
3	Top cover
4	Spring
5	Top cover gasket Ø121.8 × Ø113.6 × 0.8mm
6	Wing nut M10 (torque max. 3 Nm)
7	Lock washer
8	Top plate
9	Felt gasket Ø95.5 × Ø45.5 × 2 mm
10	Solid core
11	Felt gasket Ø95.5 × Ø78 × 2 mm
12	Core plate
13	Distance rod
14	Wire Mesh
15	Core holder
16	Cross Gasket
17	Washer
18	Hex Socket Head Screw M6
19	Filter drier shell



Installation

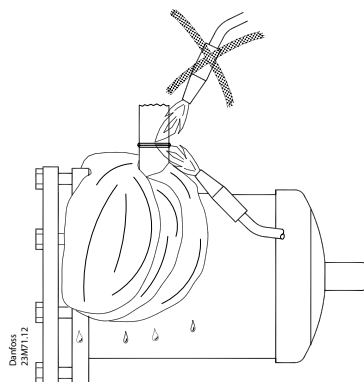


Type	L minimum		Maximum working pressure PS / MWP [bar] / [psig]
	[mm]	[in]	
DCR 048	170	7	46 / 667
DCR 096	310	13	46 / 667
DCR 144	310	13	35 / 507 ¹⁾
			46 / 667 ²⁾
DCR 192	310	13	28 / 406 ¹⁾
			40 / 580 ²⁾

¹⁾ For usage with strainer or as a receiver application

²⁾ For "drier" application using all the permissible cores

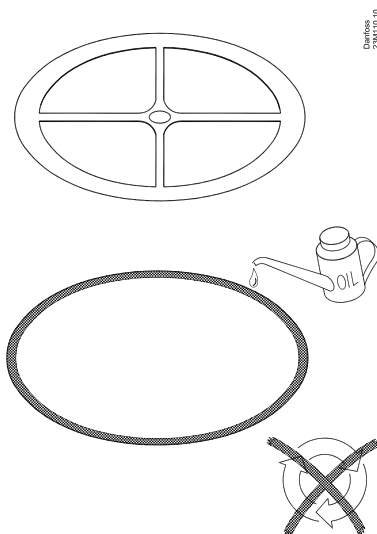
Brazing



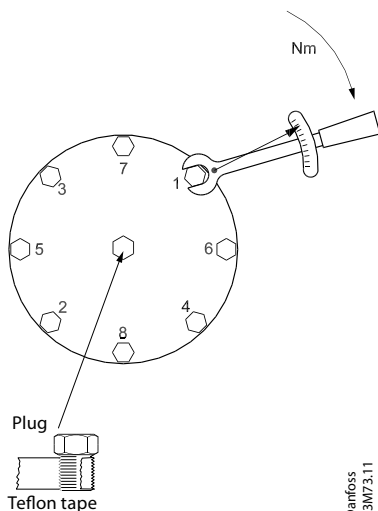
Connector type	Brazing material
Copper	Min. 5% Ag
Steel	Silver-flo 55 + Easy-flow flux

Do not install DCR insert before brazing

Gasket



How to tighten the bolts



Step 1	Fingertighten all bolts
Step 2	3 Nm / 2.21 ft lb
Step 3	10 Nm / 7.37 ft lb
Step 4	20 Nm / 14.75 ft lb
Step 5 *)	28 Nm / 20.65 ft lb

*) Repeat until complete tightness has been reached.