

# AK-SC255

## Product Release Information

Software Release Version 02.081 (AK-SC255)

December 2008

Version 02.081 AK-SC 255 software is released today for field upgrade together with a new bootloader version 5.1. Version 5.4 of the remote commissioning software tool (AKA65) is recommended. Factory supplied AK-SC255 units with 02\_081 software will be available from 12/12/08. ***This document contains Important information - please ensure this is fully read before attempting any AK-SC255 updates.***

Software name	WIN 255 filename	Firmware	Replaces
R02.081 (Rack version)	VR02_081.exe	VR02_081.cmot	VR02_075.exe / .CMOT
L02.081 (L version)	VL02_081.exe	VL02_081.cmot	VL02_073.exe / .CMOT

### Requirements:

AKA65 software version 5.4 / AK255 Boot Loader version 5.1

For EKC Modbus support use AK-SC255 CPU baseboard H/W revision V1.5 and above. If Modbus is used, RS485 host network is not available - use Ethernet mode.

### Summary of changes / software description:

2.081 is a (major) software update for the AK-SC255 controller and is recommended for all users wishing to update system functionality based on the items listed (see page 2-5).

### Upgrading your AK-SC255

Always backup original database prior to performing upgrade / downgrade.

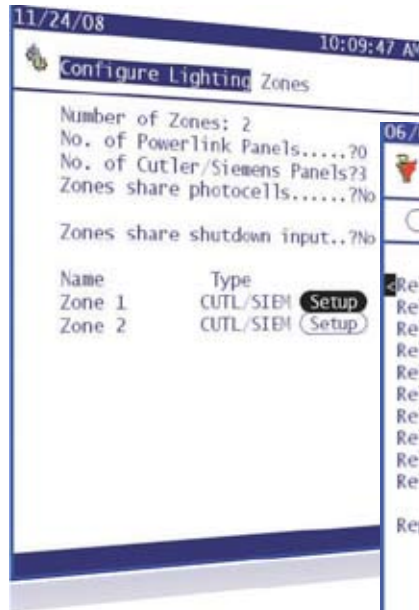
To either upgrade or downgrade AK-SC255 software, it is recommended that this process is done in incremental (release software) steps. ***Ensure that your AK-SC255 has been upgraded to 5.1 boot loader first.*** Use AK255 Code-loader 4.0 program to load .cmot image. The New code-loader 4.0 and boot 5.1 support the new compressed, faster .csi file format

## Compatibility with previous software:

Please consult the Technical Support Information Bulletin (0034) for specific details on compatibility questions

## New Features & Functions / resolved items

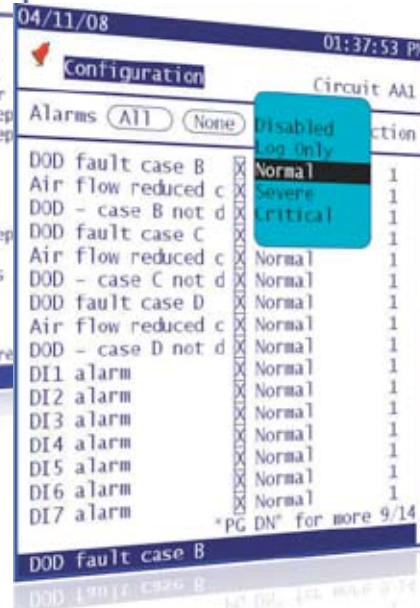
New Support for Siemens Lighting Panels



New Alarm Routing



New Alarm Action format



- New Alarm routing system
  - Flexible alarm routing with the ability to output alarms to relays, modem, IP address, buzzer, front LED
  - Automatically send test alarms based on time interval or schedule
  - Different alarm actions can be set for each controller / application
  - Critical & Severe levels
- Lennox Roof Top Controller Support
  - Connect Lennox RTU via LonTP 78 communications bus.
- Siemens Lighting Panel Interface
  - P1 Lighting panel support using built in AK-SC255 Modbus port



## Enhancements & fixed items

**CCB items reflect small enhancements & fixed items. Each item listed represents new items or corrections in the 02\_081 software.**

<b>CCB Item</b>	<b>Status</b>	<b>Description</b>
25496000	Closed	User Can not Manual On or Off Gas Valve
961216	Closed	New modem option - Hayes Accura V92
961214	Closed	Dew point from SC255 needs to be sent to a Generic device in Degrees C
961172	Closed	When viewing File Management - Internet Files using AKA65, files displayed 'SC255' are the edf files should show Web files.
961114	Closed	Improvements to Quick Menu operation with AK2-303 and 255 (Look in Analysis for how to info)
961100	Closed	Use EKC 202D2 as a local display
961097	Closed	R401A lookups incorrect; add R422D to Refrig List
961089	Closed	Win255 Drops on Live Connection
961088	Closed	Added Lighting Shutdown DI
961083	Closed	Support for Carlo Gavazzi Energy Meter
961080	Closed	Enhanced screen support with Distech thermostats
961070	Closed	When configuring internal schedules in the Distech I can not enter times greater than 1439.
961057	Closed	Added shut down input per HVAC for AHU and RTU's
961056	Closed	Expand the Neutral Zone max from 20 PSI to 40 PSI on the single version code
961053	Closed	After an alarm has been acknowledged would like the ability to have the alarm to commence timing out again.
961043	Closed	DCU's are simply missing the "It's ok to come out of External Shutdown" mode message
961038	Closed	Reset Oil Lockout button not accessible on Compressor # 2
961028	Closed	HVAC Status (02-0001) reads incorrectly.
961026	Closed	Fixed status on the HVAC Menu screen (02-0001) that reads incorrectly when only in Dehumidification (desiccant)
961012	Closed	Allow User to Select either Discharge or Dropleg Transducer for Sat Cond Control
961000	Closed	Find new Nodes button removed
960998	Closed	Corrected problem in AKA65 if not the same version as AK-SC255 Win255 version confusing if not the same as actual 255
960993	Closed	Update time of 255 on connect of AKA65
960956	Closed	Allow Alarm Delay after Defrost to be set to 0 minutes
960874	Closed	Added phase loss for condensers
960873	Closed	Would like to have CFM as an option for compressor size
960872	Closed	Need zone sensor descriptions on HVAC status screen