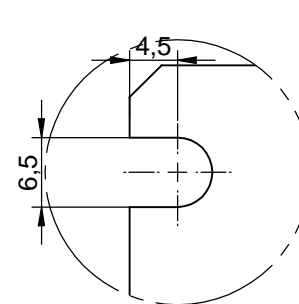
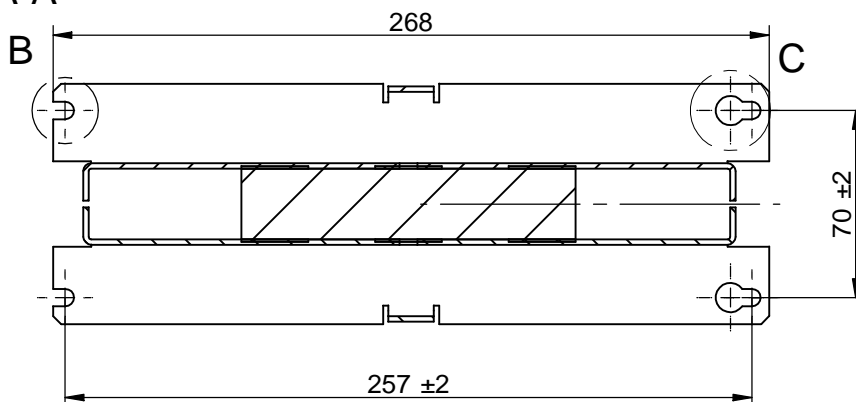
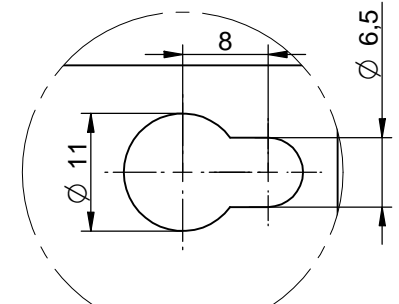


sectional view A-A

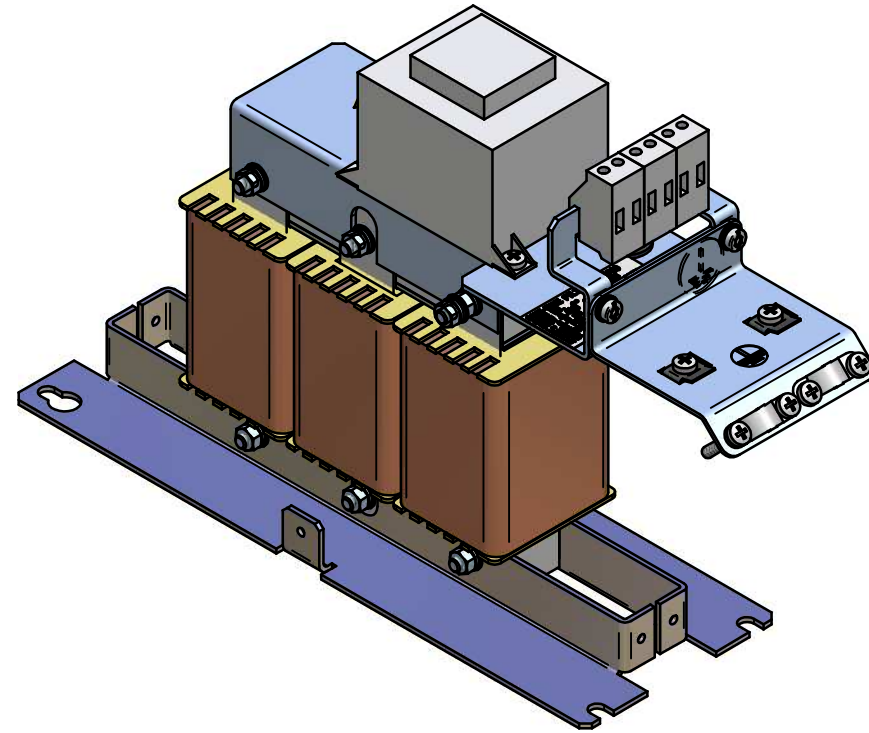
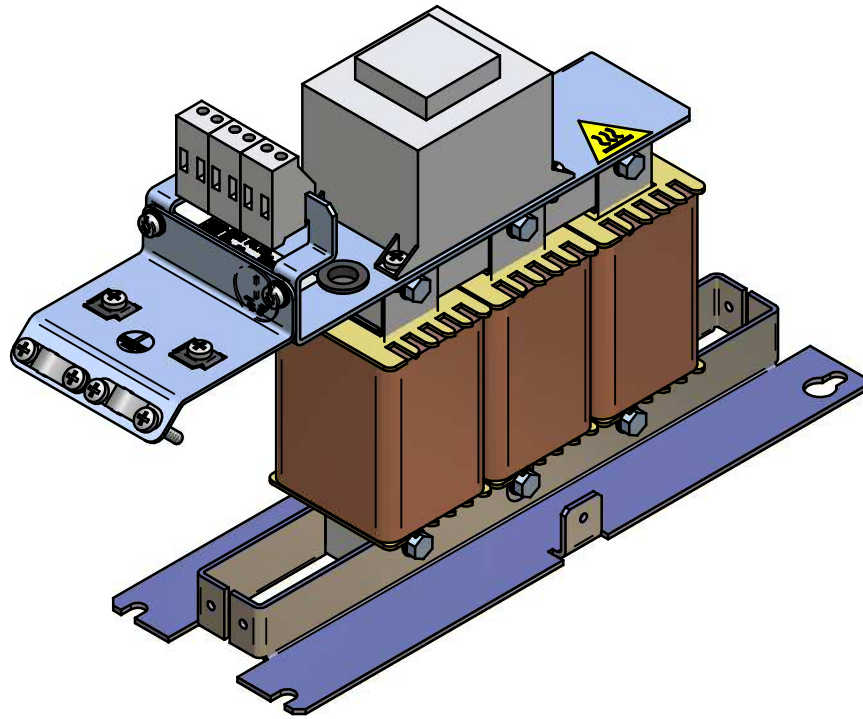


detail B



detail C

*This document may not be duplicated without our written authorization. To not be handed over to, copied or used by third party. Two- or three-dimensional reproduction of contents to be authorized.		Dimensions without tolerance statement against DIN ISO 13920b		projection	scale: 1:2	DIN A3	weight: 4,6 kg
				date	name	description:	
				20.1.2005	Mestermann	sine wave filter	
F.	label added	24.01.2008	Mes.	che.	25.11.05	Stitz	8A L=6,9mH Cy=4,7µf
E.	fixing point added	18.12.2007	Mes.	DIN			
D.	comments added	09.11.2007	Ger.				130B2408
C.	cable plate holes	22.03.06	Mes.				
B.	bei PCB Auslieferung	14.07.06	Mes.				FS21147-8-99
A.	Fäßen	22.11.2005	Mes.				
num.	modification	date	name	dev.for:	dev.by:	CAD-File 6_9mh_8a-100-ip00.dxf	



*This document may not be duplicated without our written authorization. To not be handed over to, copied or used by third party. Two - or three-dimensional reproduction of contents to be authorized.				Dimensions without tolerance statement against DIN ISO 15820b	projection 	scale: 1:2,5	DIN A4	weight: 4,6 kg	
				date	name	description: sine wave filter 8A L=6,9mH Cy=4,7µf 130B2408 FS21147-8-99			
				plot	20.1.2005				Mestermann
F.	label added	24.01.2008	Mes.	che.	20.01.05				Stitz
E.	fixing point added	19.12.2007	Mes.	DIN					
D.	comments added	09.11.2007	Ger.						
C.	cable plate holes	22.03.2006	Mes.						
B.	cable fixing added at IP00 design	14.07.2006	Mes.						
A.	bevel and label added	22.11.2005	Mes.						
num	modification	date	name	dev.for:	dev.by:	CAD-File 6_9mh_8a-100-ijp00.dft			