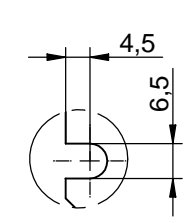
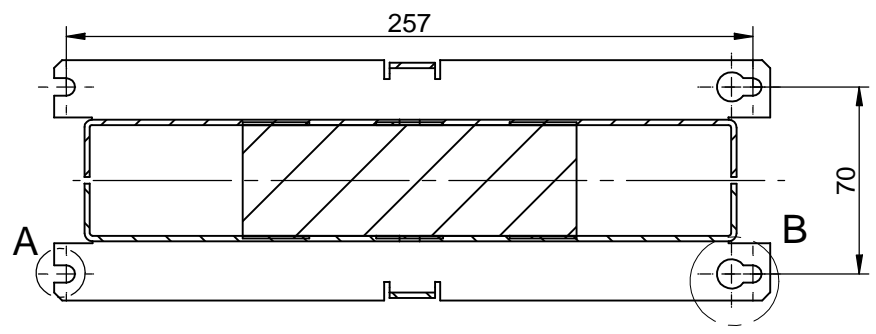
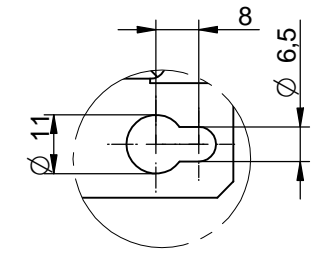


sectional view A-A

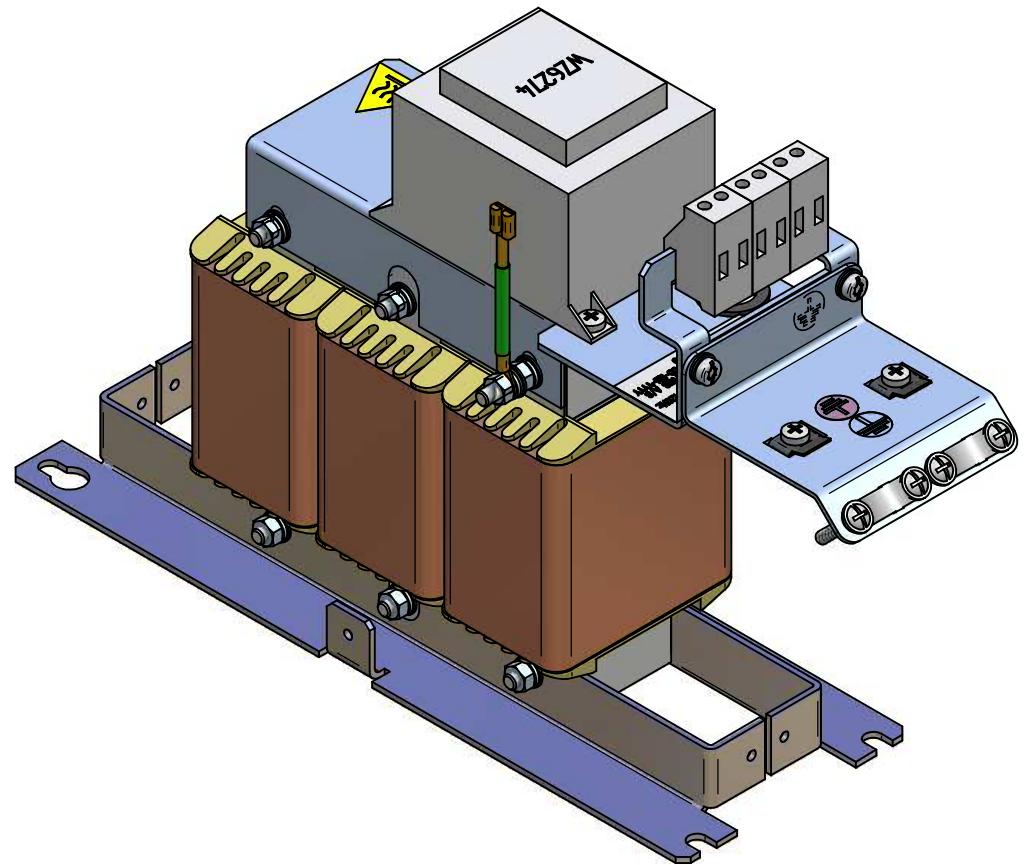
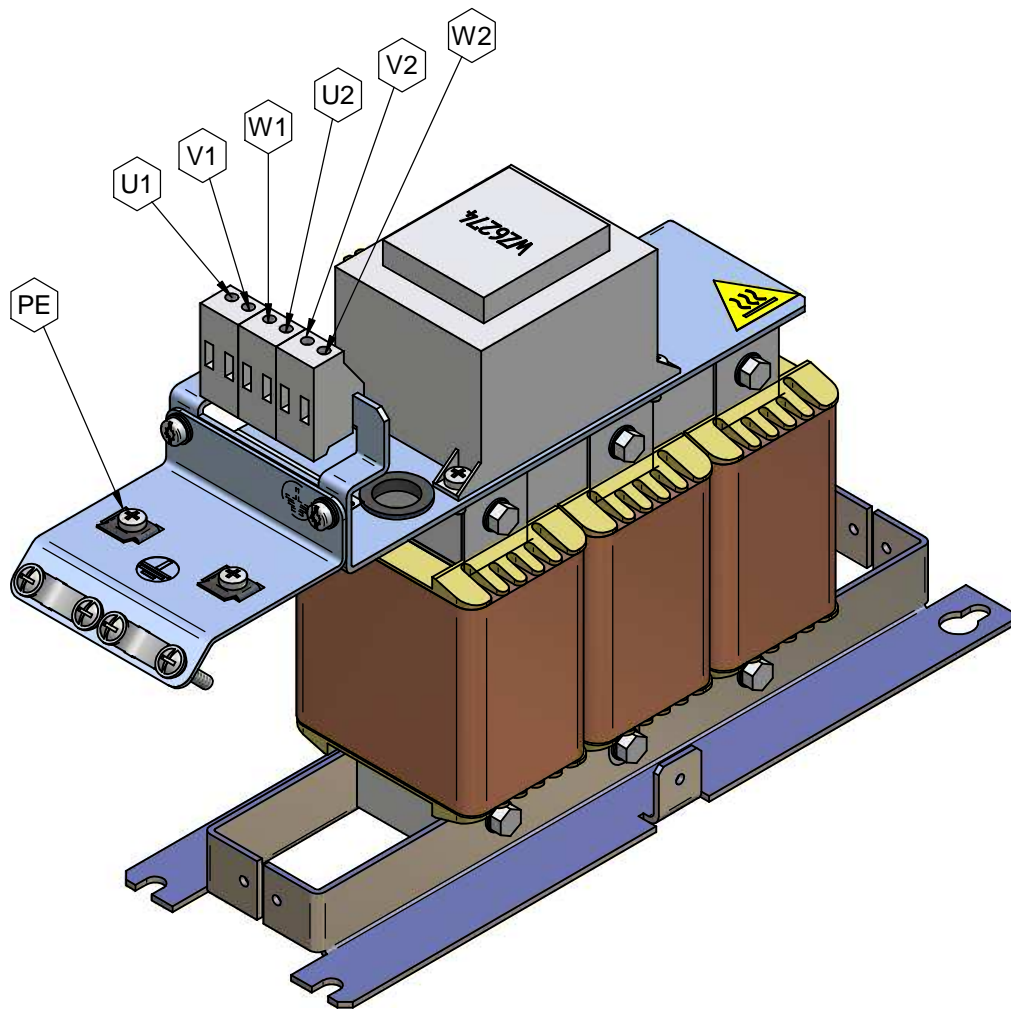


detail A



detail B

*This document may not be duplicated without our written authorization. To not be handed over to, copied or used by third party. Two- or three- dimensional reproduction of contents to be authorized.				Dimensions without tolerance statement against DIN ISO 13020b		projection	Scale: 1:2	DIN A3	weight:	6,05 kg
				date	name		description: sine wave filter 10A L=5.2mH Cy=6.8µF 130B2409 FS21147-10-99			
				plot	22.11.05					
G	label added	24.01.2008	Mes.	Stitz	22.11.05					
E	ring point added	18.12.2007	Mes.	JIN						
D	size of hole 12 to 18 mounting bracket	24.10.2007	Mes.							
C	housing fixed by cable fixing	10.04.2007	Mes.							
B	cable fixing added to 300 degree	14.07.2006	Mes.							
A	bevel and notch added	11.01.2006	Mes.							
num	modification	date	name	dev.for:	dev.by:					CAD-File 5_2mh_10n-100.dwg



*This document may not be duplicated without our written authorization. To not be handed over to, copied or used by third party. Two- or three- dimensional reproduction of contents to be authorized.				Dimensions without tolerance statement against DIN ISO 13020b		projection 	Scale: 1:2	DIN A3	weight:	6,05 kg	
				date	name	description:					
				plot	22.11.05	Mestermann	sine wave filter				
G.	label added	24.01.2008	Mes.	File:	22.11.05	Stitz	10A L=5.2mH Cy=6.8µF				
E.	wing point added	18.12.2007	Mes.	JIN			130B2409				
D.	size of hole 12 to 18 mounting bracket	24.10.2007	Mes.				FS21147-10-99				
C.	housing fixed by cable fixing	10.04.2007	Mes.								
B.	cable fixing added to 100% design	14.07.2006	Mes.								
A.	cover and notch added	11.01.2006	Mes.								
num	modification	date	name	dev.for:	dev.by:		CAD-File 5_2mh_10n-100.dwg				