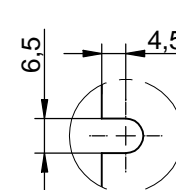
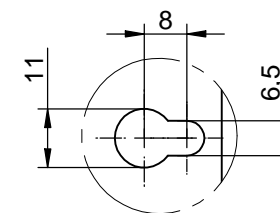


sectional view A-A

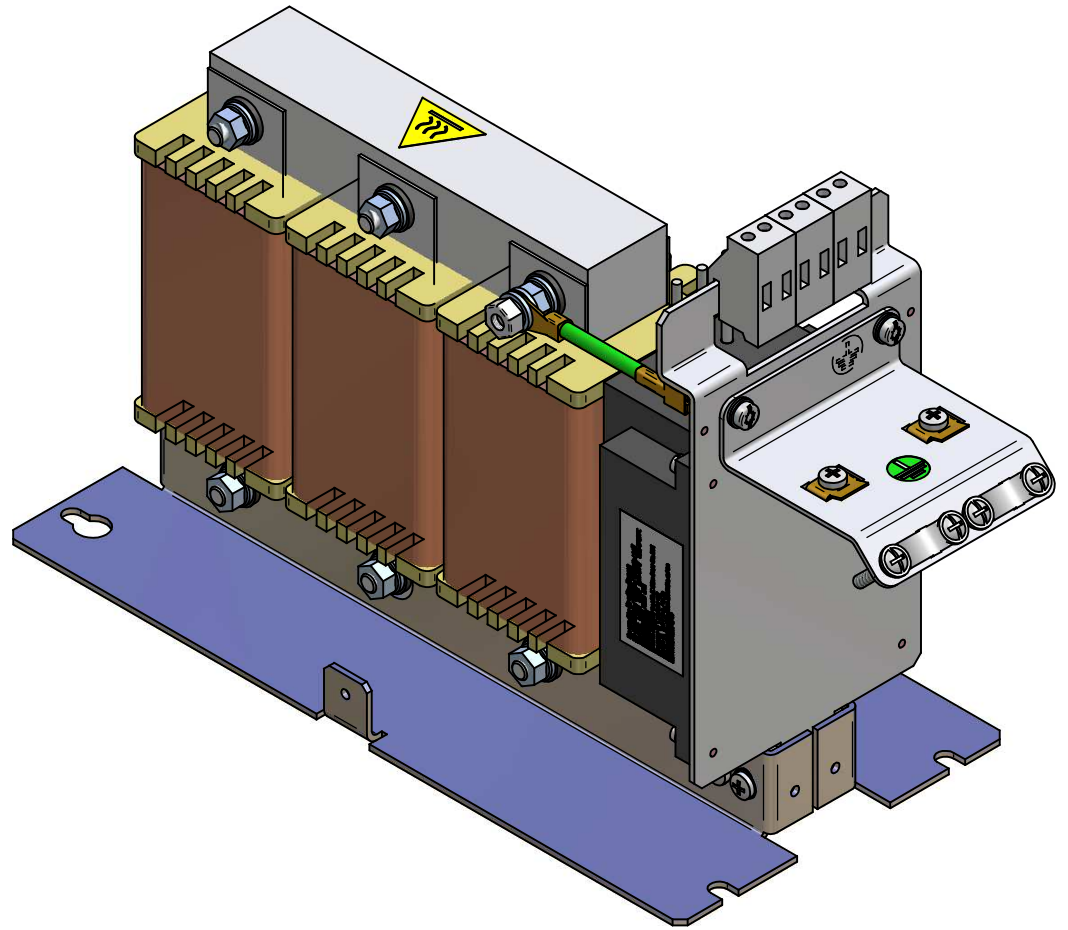
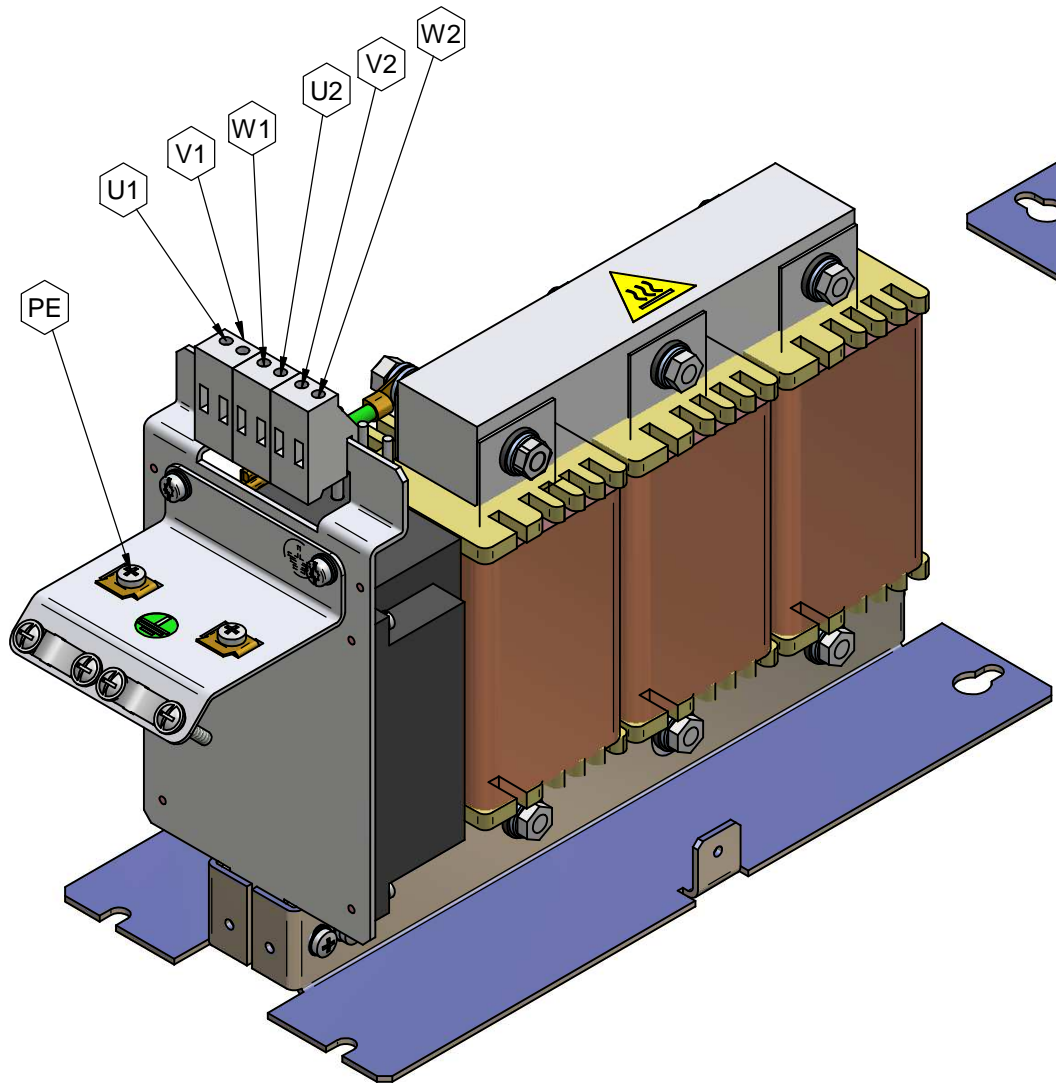


detail A



detail B

*This document may not be duplicated without our written authorization. To not be handed over to, copied or used by third party. Two- or three-dimensional reproduction of contents to be authorized.				Dimensions without tolerance statement against DIN ISO 13920b		projection	scale: 1:2	DIN A3	weight: 7.8kg
h	date of the capacitor housing moved	13.02.2008	Mes.	date	name		description:	17A L=3,1mH Cy=10µF 130B2411 FS21147-17-99	
g	ring pore housing added	24.01.2008	Mes.	plot	Mestermann				
f	comments / dimensions added	09.11.2007	Ger.	che	Stitz				
e	change for supplier	15.10.2007	Mes.	DIN					
d	capacitor housing issues changed	10.04.2007	Mes.						
c	date being PRO design added	14.07.2006	Mes.						
b	housing design procedure of 17A	23.11.2005	Mes.						
a	capacitor housing width increased by 4	30.08.2005	Mes.						
num	modification	date	name	dev.for:	dev.by:			CAD-File 3_1mh_17a-100.dft	



*This document may not be duplicated without our written authorization. To not be handed over to, copied or used by third party. Two- or three-dimensional reproduction of contents to be authorized.				Dimensions without tolerance statement against DIN ISO 13920b		projection	scale: 1:2	DIN A3	weight:	7,8 kg
h	date of the capacitor housing moved	13.02.2008	Mes.	date	name				description:	17A L=3,1mH Cy=10µF 130B2411 FS21147-17-99
g	bring pole housing outlet	24.01.2008	Mes.	plot	Mestermann					
f	comments / dimensions added	09.11.2007	Ger.	che	Stitz					
e	change for capacitor outlet	15.10.2007	Mes.	DIN						
d	capacitor housing issues changed	10.04.2007	Mes.							
c	table being (PRO design added)	14.07.2006	Mes.							
b	housing bracket made of 1.10	23.11.2005	Mes.							
a	capacitor housing width increased by 4	30.09.2005	Mes.							
num	modification	date	name	dev.for:	dev.by:				CAD-File	3_1mh_17a-100.dft