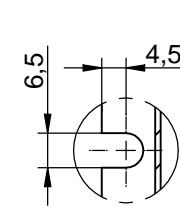
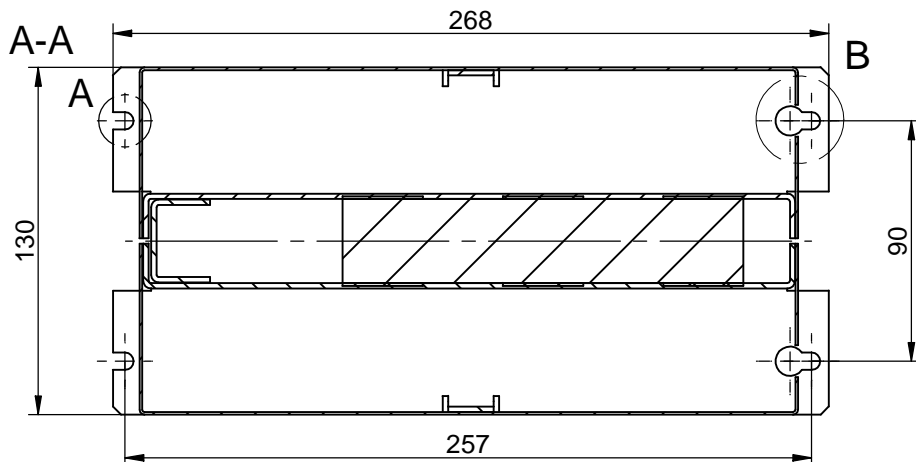
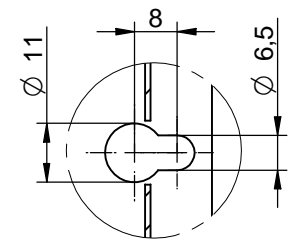


sectional view A-A

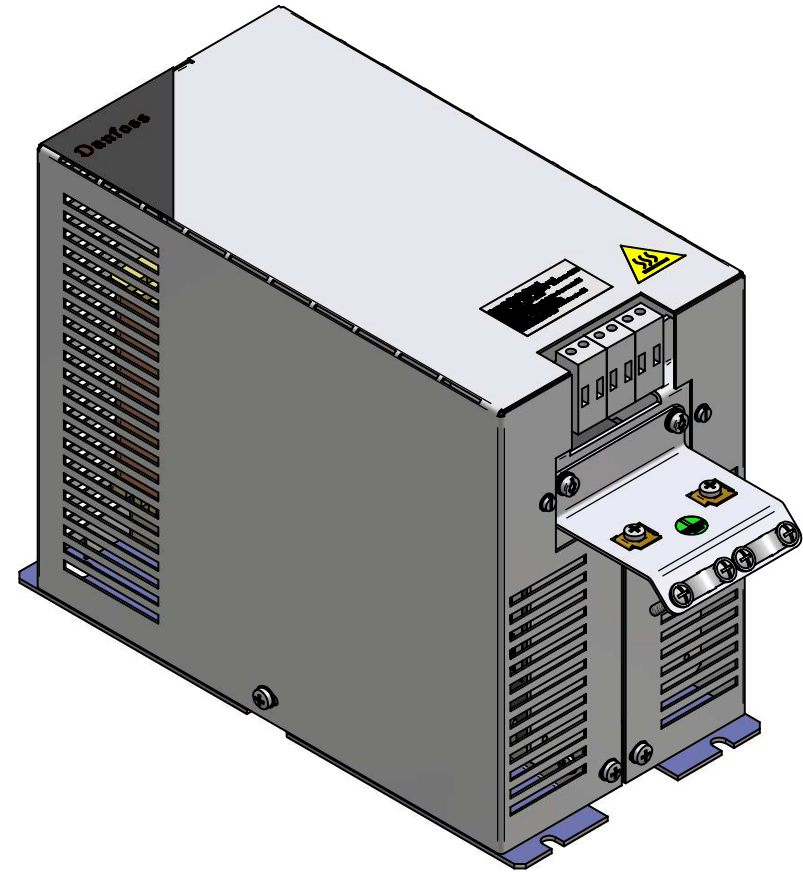
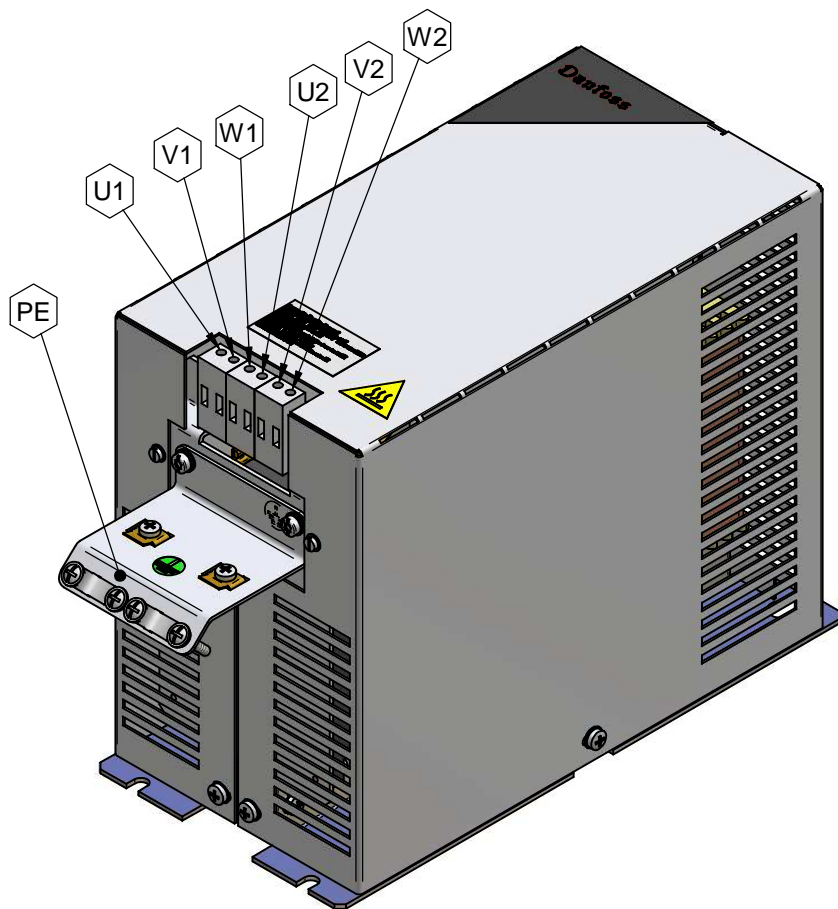


detail A



detail B

*This document may not be duplicated without our written authorization. To not be handled over or copied or used by third party. Two- or three-dimensional reproduction of contents to be authorized.				Dimensions without tolerance statement against DIN ISO 13920b		projection	scale: 1: 1:2 DIN A3	weight: 9,1 kg
h	date of the capacitor focusing moved	13.02.2008	Mes.	date	name		description: sine wave filter 17A L=3,1mH Cy=10µF	130B2446 FS21148-17-99
g	bring pore focusing adjust	24.01.2008	Mes.	plot	Mestermann			
f	comments / dimensions added	09.11.2007	Ger.	che	Stitz			
e	change for capacitor adjust	15.10.2007	Mes.	DIN				
d	change bring issues changed	10.04.2007	Mes.					
c	table bring PRO design added	14.07.2006	Mes.					
b	focusing bracket procedure of 17A	23.11.2005	Mes.					
a	capacitor focusing width increased by 2	30.09.2005	Mes.					
num	modification	date	name	dev.for.	dev.by.		CAD-File 3_1mh_17a-100.dft	



*This document may not be duplicated without our written authorization. It is not to be handed over, copied or used by third party. Two- or three-dimensional reproduction of contents to be authorized.				Dimensions without tolerance statement against DIN ISO 13920b		projection	scale: 1:2	DIN A3	weight:	9,1 kg	
h	state of the capacitor housing moved	13.02.2008	Mes.	date	name		description: sine wave filter 17A L=3,1mH Cy=10µF 130B2446 FS21148-17-99				
g	bring pole housing outlet	24.01.2008	Mes.	plot	Mestermann						
f	comments / dimensions added	09.11.2007	Ger.	che	23.09.05						Stitz
e	change for capacitor outlet	15.10.2007	Mes.	DIN							
d	state being issues changed	10.04.2007	Mes.								
c	state being PRO design added	14.07.2006	Mes.								
b	housing bracket made of 150	23.11.2005	Mes.								
a	capacitor housing with increased by 2	30.08.2005	Mes.								
num	modification	date	name	dev.for:	dev.by:	CAD-File 3_1mh_17a-100.dft					