

additional informations:
 filter colour : RAL7001
 filter weight : 30,0kg
 cable clamp : 2x 130B4045

label:

VLT MCC 102 du/dt FILTER

Denfos AS, Esbo Nunning, Denmark
 www.denfos.com

MADE IN GERMANY

LT=10H
 Q=15H
 P=20H
 Weight: 30.0kg
 Tightening torque
 terminal: 5.0-12.0Nm
 5M V CU

130B2845000168 206*

EMC 568

CE

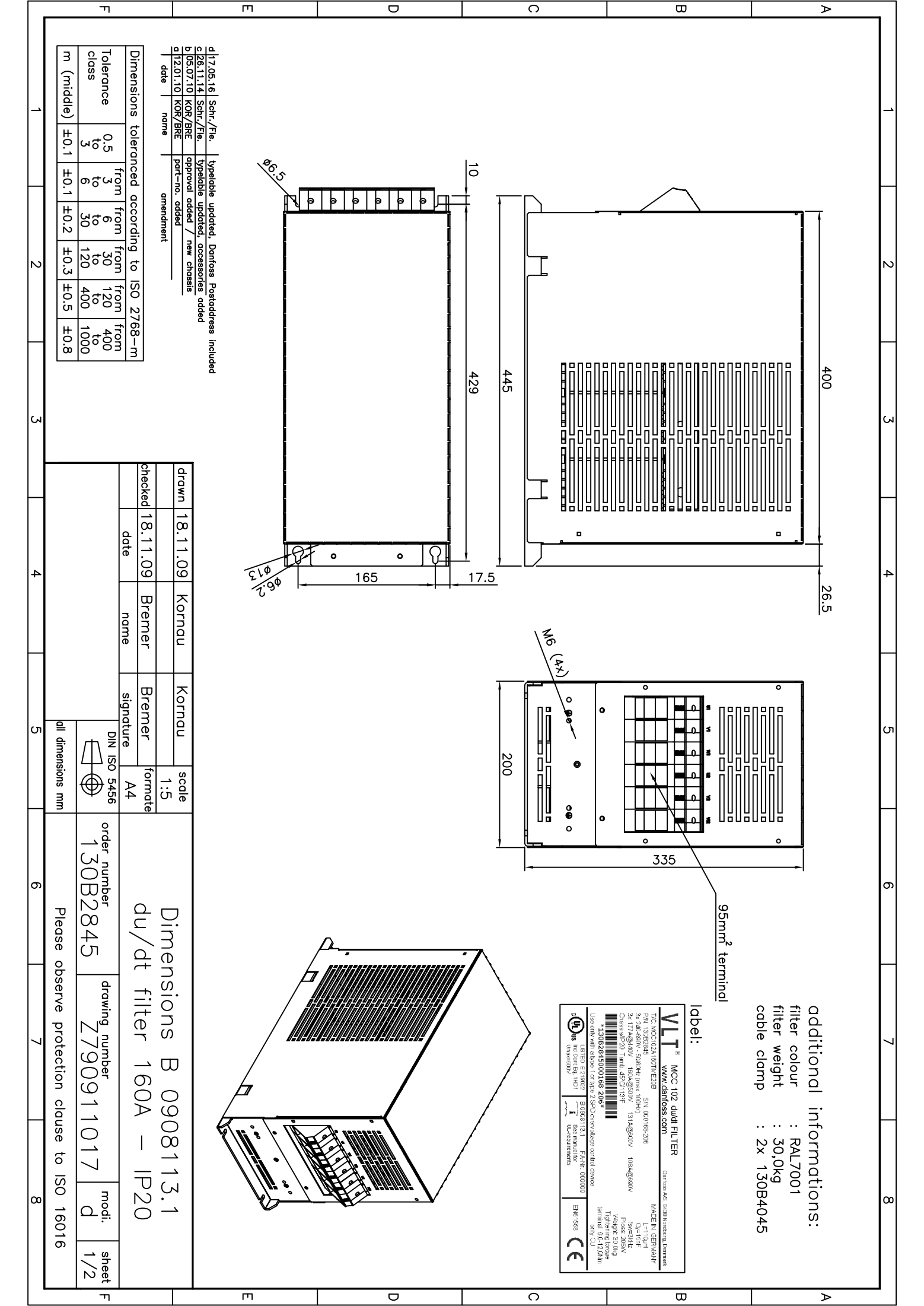
d 17.05.16	Schr./Fie.	typelable updated, Dentfoss Postaddress included
c 26.11.14	Schr./Fie.	typelable updated, accessories added
b 05.07.10	KOR/BRE	approval added / new chassis
a 12.01.10	KOR/BRE	part-no. added
date	name	amendment

Dimensions toleranced according to ISO 2768-m						
Tolerance class	0.5 to 3	from 3 to 6	from 6 to 30	from 30 to 120	from 120 to 400	from 400 to 1000
m (middle)	±0.1	±0.1	±0.2	±0.3	±0.5	±0.8

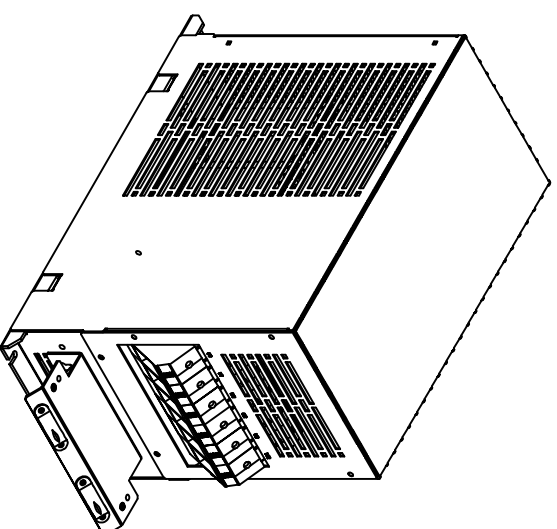
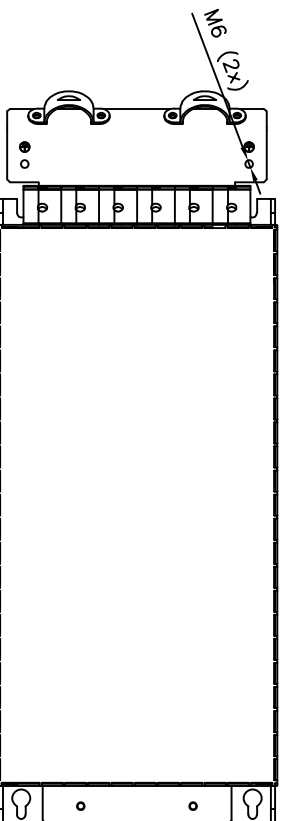
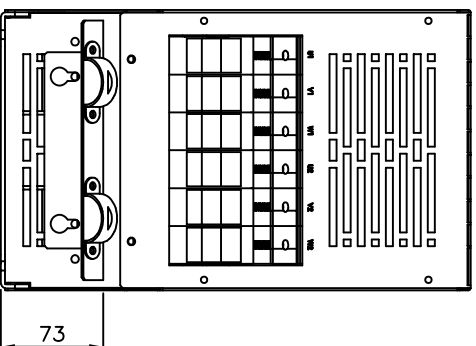
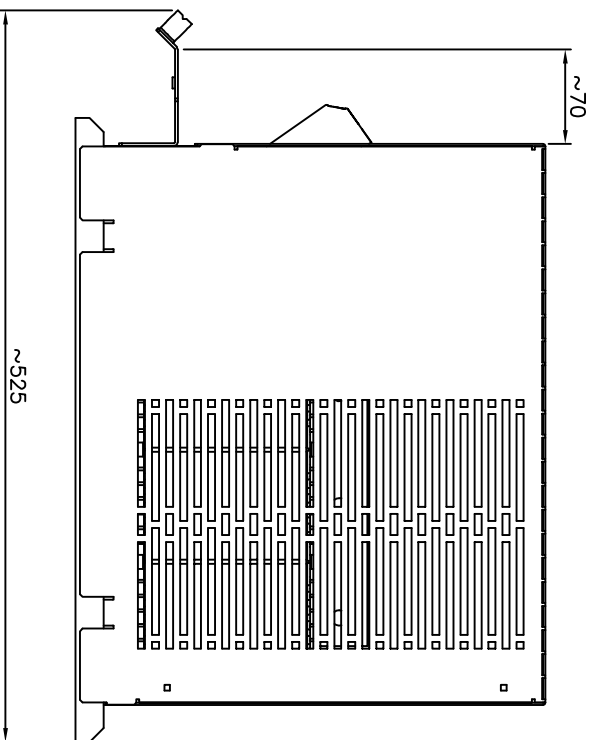
drawn	18.11.09	Kornau	Kornau	scale	1:5
checked	18.11.09	Bremer	Bremer	format	A4
date		name	signature	DIN ISO 5456	

Dimensions B 0908113.1
 du/dt filter 160A – IP20

order number	130B2845	drawing number	Z790911017	modi.	d	sheet	1/2
Please observe protection clause to ISO 16016							



included accessories
(screen connection plate)



d|17.05.16| Schr./Fie. | typeable updated, Damfoss Postaddress included
 c|06.11.14| Schr./Fie. | typeable updated, accessories added
 b|05.07.10| KOR/BRE | approval added / new chassis
 a|12.01.10| KOR/BRE | part-no. added
 date name amendment

Dimensions toleranced according to ISO 2768--m						
Tolerance class	0,5 to 3	from 3 to 6	from 6 to 30	from 30 to 120	from 120 to 400	from 400 to 1000
m (middle)	±0.1	±0.1	±0.2	±0.3	±0.5	±0.8

drawn	18.11.09	Kornau	Kornau	scale	1:5
checked	18.11.09	Bremer	Bremer	format	A4
	date	name	signature		



all dimensions mm

Dimensions B 0908113.1
du/dt filter 160A – IP20

order number 130B2845 drawing number Z790911017

Please observe protection clause to ISO 16016

mod. d sheet 2/2