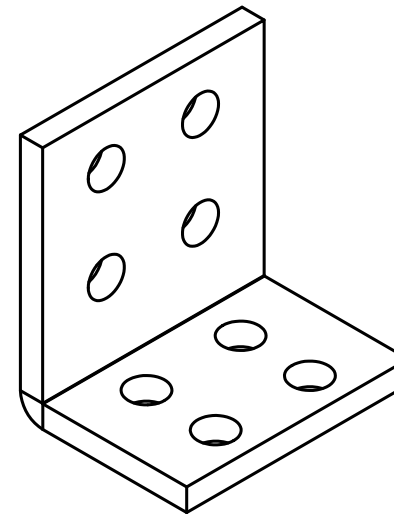
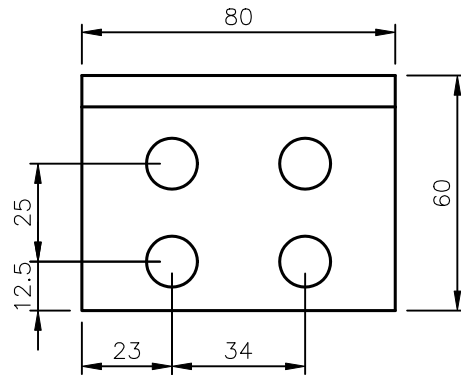
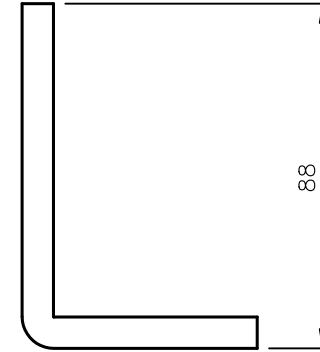
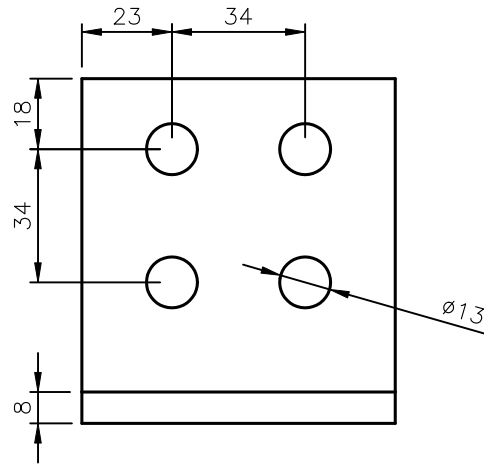


contents:

- 6pcs L-shape
- 24pcs M12x40 screw
- 48pcs M12 washer
- 24pcs B12 lock washer
- 24pcs M12 nut



a	12.05.10	KOR/BRE	part-no. added; screws change to M12x40			
	date	name	amendment			

Dimensions toleranced according to ISO 2768-m						
Tolerance class	0.5 to 3	from 3 to 6	from 6 to 30	from 30 to 120	from 120 to 400	from 400 to 1000
m (middle)	±0.1	±0.1	±0.2	±0.3	±0.5	±0.8

drawn	09.12.09	Kornau	Kornau	scale	1:2
checked	09.12.09	Bremer	Bremer	formate	
	date	name	signature	A4	
				DIN ISO 5456	
				all dimensions mm	

Dimensions B 0912034
L-shape kit type 3

order number	drawing number	modi.	sheet
130B3139	Z790912008	a	1/1

Please observe protection clause to DIN 34