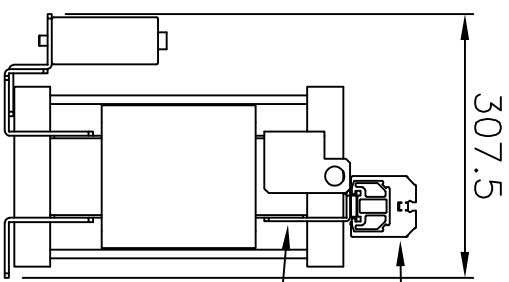
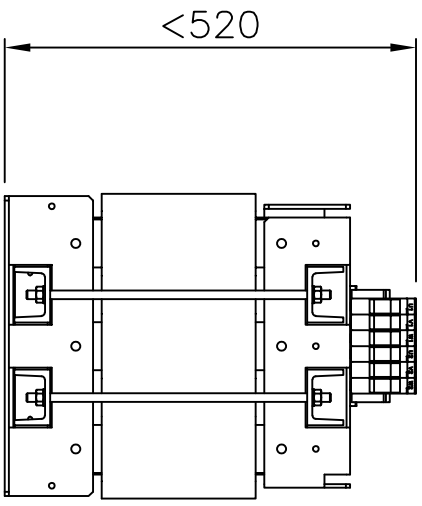
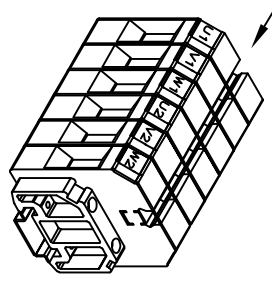
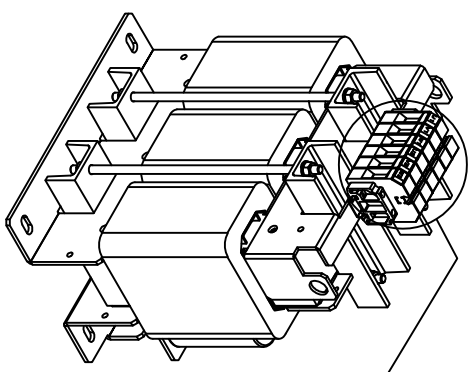
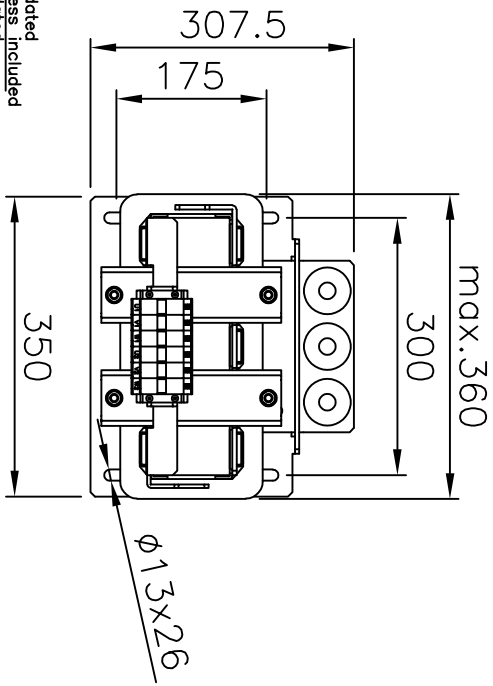


additional informations:  
 filter colour : impregnated  
 filter weight : 95kg



50mm<sup>2</sup> terminal  
 PE bolt M8  
 (2x washer, 1 lock washer, 1 nut)



label:

**VLT** MCC 101 sine wave FILTER  
 www.danfoss.com

Part no. 4183100000

T/C: MCC101A11ST3E00B S/N: 000170-178  
 P/N: 13083179 500VA, 400V, 50/60Hz  
 3x 115A/200A 100A@90Hz 50/60/100Hz  
 Chassis/700 7-rmb 45°C/113°F  
 4130831790017001758

Use only with a type 1 or type 2 SPD overvoltage control device

E210022 E 1001072 FAAR: 000000  
 Int.Cert.Fg. H101 See manual for UL-requirements EN 61558 CE

MADE IN GERMANY  
 L-53101H  
 300-394C  
 Ploss: 470W  
 Weight: 95kg  
 Tightening torque  
 Terminal 2,0 Nm  
 50/32

f 25.04.16	Schrö./Ele.	Danfoss Postaddress: included	typeilabel updated
e 22.12.14	Schrö./Ele.	cap. connectors changed to bolt	typeilabel updated
d 05.11.13	Schrö./Kor.		typeilabel updated
c 06.03.13	Schrö./Kor.		typeilabel updated
b 14.07.11	KOR/Lauer	new mechanical design	
a 30.09.10	KOR/Lauer	approval added	
date	name		amendment

Dimensions toleranced according to ISO 2768-m						
Tolerance class	0,5 to 3	from 3 to 6	from 6 to 30	from 30 to 120	from 120 to 400	from 400 to 1000
m (middle)	±0,1	±0,1	±0,2	±0,3	±0,5	±0,8

drawn	01.06.10	Kornrau	Kornrau	scale	/
checked	01.06.10	Bremer	Bremer	formate	A4
date		name	signature		

Dimensions B 1001072  
 sine-wave filter 500V 115A - IP00

order number	130B3179	drawing number	Z791004002	modi.	f	sheet	1/1
Please observe protection clause to ISO 16016							