

additional informations:
 filter colour : impregnated
 filter weight : 260kg

label:

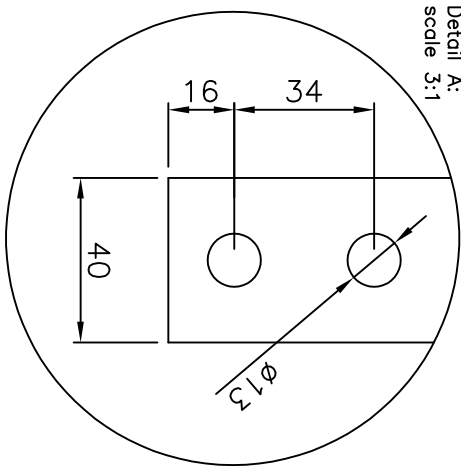
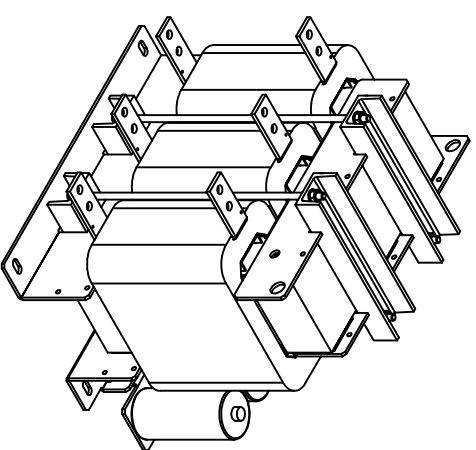
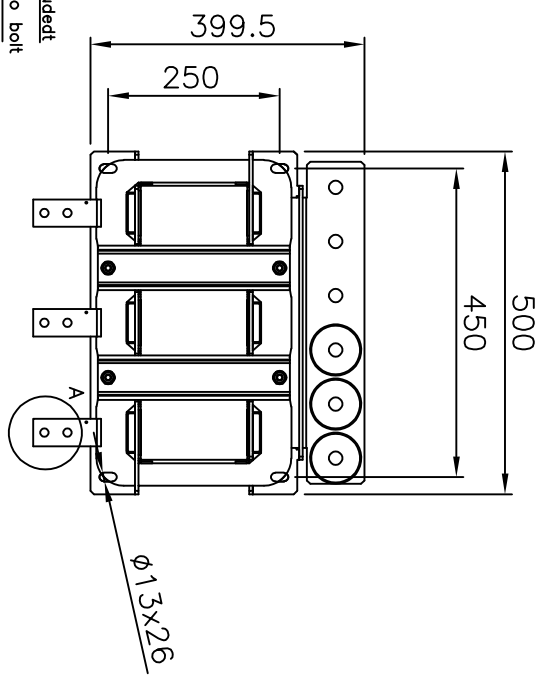
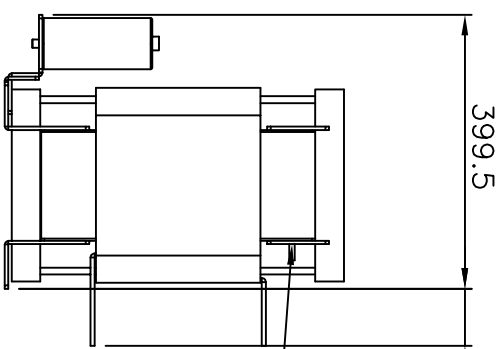
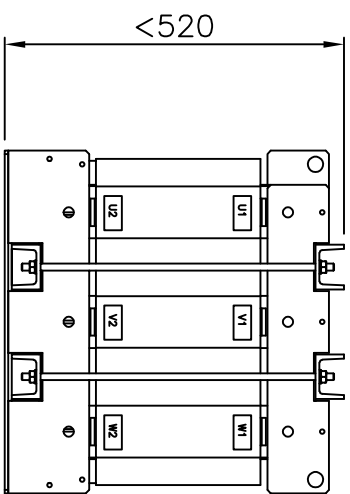
VL MCC 101 sine wave FILTER
 www.dantoss.com

Tel: +49 3631 888-110 Fax: +49 3631 888-111
 E-Mail: info@vl.com

MADE IN GERMANY
 L2620/1
 Sine-Wave Filter
 Power: 1150W
 Weight: 260kg
 Impregnating technique
 terminal: 50x10

Use only with a type 1 or type 2 SPD compatible control device

EN 61558



e	27.04.16	Schr./Fle.	typelabel updated
d	12.01.15	Schr./Fle.	Dantoss Postaddress included typelabel updated
c	14.07.14	Schr./Kor.	cap. connectors changed to bolt numbers of capacitors corrected
b	11.03.13	Schr./Kor.	typelabel updated
a	30.09.10	KOR/ Lauer	approval added
	date	name	amendment

drawn	01.06.10	Kornrau	Kornrau	scale	/
checked	01.06.10	Bremer	Bremer	formate	A4
	date	name	signature		

Dimensions B 1001075
 sine-wave filter 500V 410A – IP00

order number 130B3186
 drawing number Z791004005

modi: e
 sheet: 1/1

Please observe protection clause to ISO 16016

F	Dimensions toleranced according to ISO 2768-m	from 3 to 6	from 6 to 30	from 30 to 120	from 120 to 400	from 400 to 1000
E	Tolerance class	±0.1	±0.1	±0.2	±0.3	±0.5
D	m (middle)	±0.1	±0.1	±0.2	±0.3	±0.5