

additional informations:
 filter colour : impregnated
 filter weight : 513kg

label:

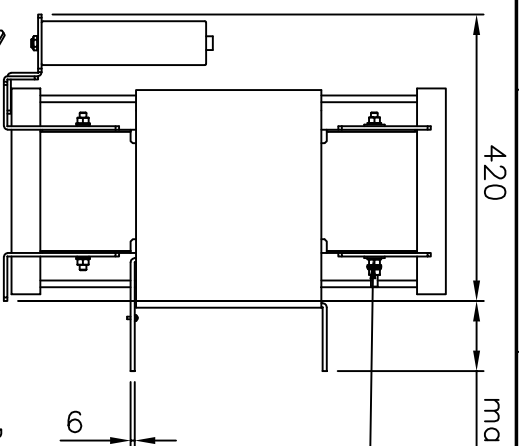
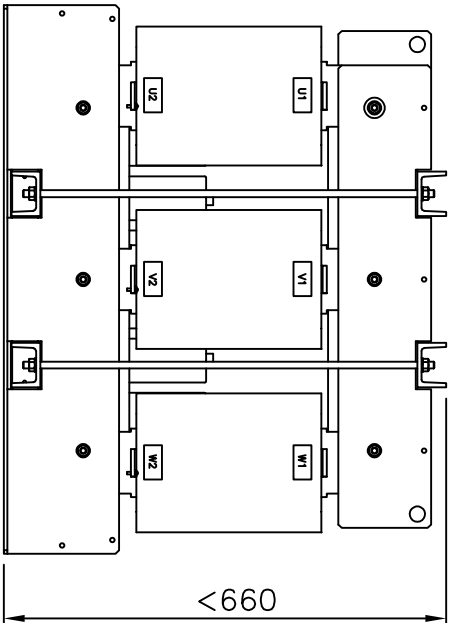
VL7 MCC 101 sine wave FILTER
 www.danfloss.com

MADE IN GERMANY
 Danfloss A/S, Sønderborg, Denmark
 DTC: MCH101A2807TE08 S/N: 600189138
 3x 450V/500V 50/60Hz max. 100Hz
 3x 360A @50Hz 341A @60Hz 27A @100Hz
 Chassis/F500 "rimo 45°C/113°F
 1300412910011694159*

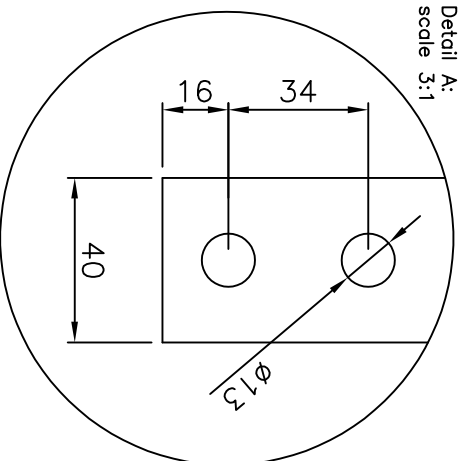
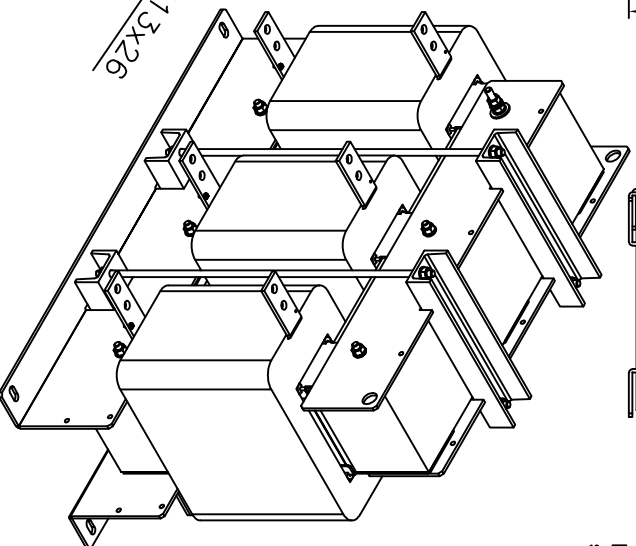
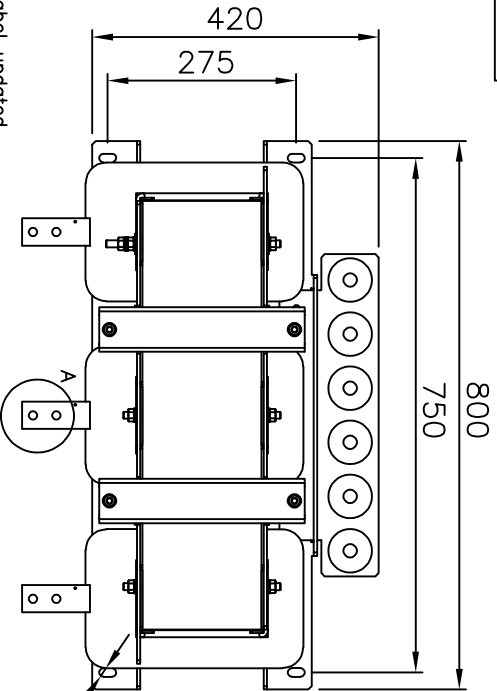
Use only with a type 1 or type 2 SPD overvoltage control device

E 310022 85 10070185 1-FA-PR 1000000
 not certified for 110V 1-UL requirements EN 61558

CE



PE bolt M10
 (2x washer, 1 lock washer, 1 nut)



Detail A:
 scale 3:1

- e 09.05.16 Schr./Fle. type label updated
 Danfloss Postaddress included
- d 22.12.14 Schr./Fle. type label updated
 cap. connectors changed to bolt
- c 14.07.14 Bre./Fle. capacitor-set changed
- b 11.03.13 Schr./Kornau type label updated
- a 01.10.10 KOR/Lauer approval added

Dimensions tolerated according to ISO 2768-m					
Tolerance class	0.5	from 3	from 6	from 30	from 120
	to 3	to 6	to 30	to 120	to 400
m (middle)	±0.1	±0.1	±0.2	±0.3	±0.5
				±0.5	±0.8

drawn	01.06.10	Kornau	Kornau	scale /	Dimensions B 1002056		
checked	01.06.10	Bremer	Bremer	format A4	sine-wave filter 690V 360A – IP00		
date		name	signature	DIN ISO 5456	order number	drawing number	modi.
					130B4129	Z791004016	e

all dimensions mm

Please observe protection clause to ISO 16016