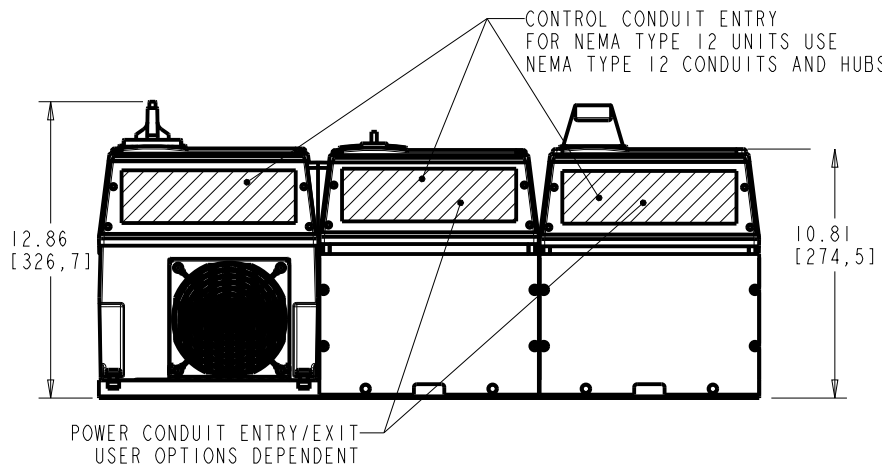
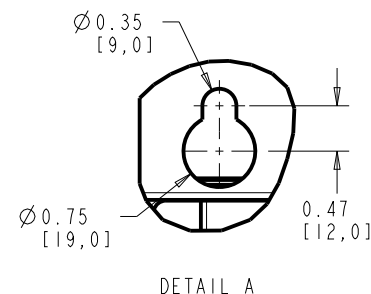
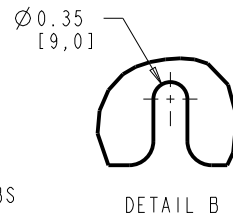
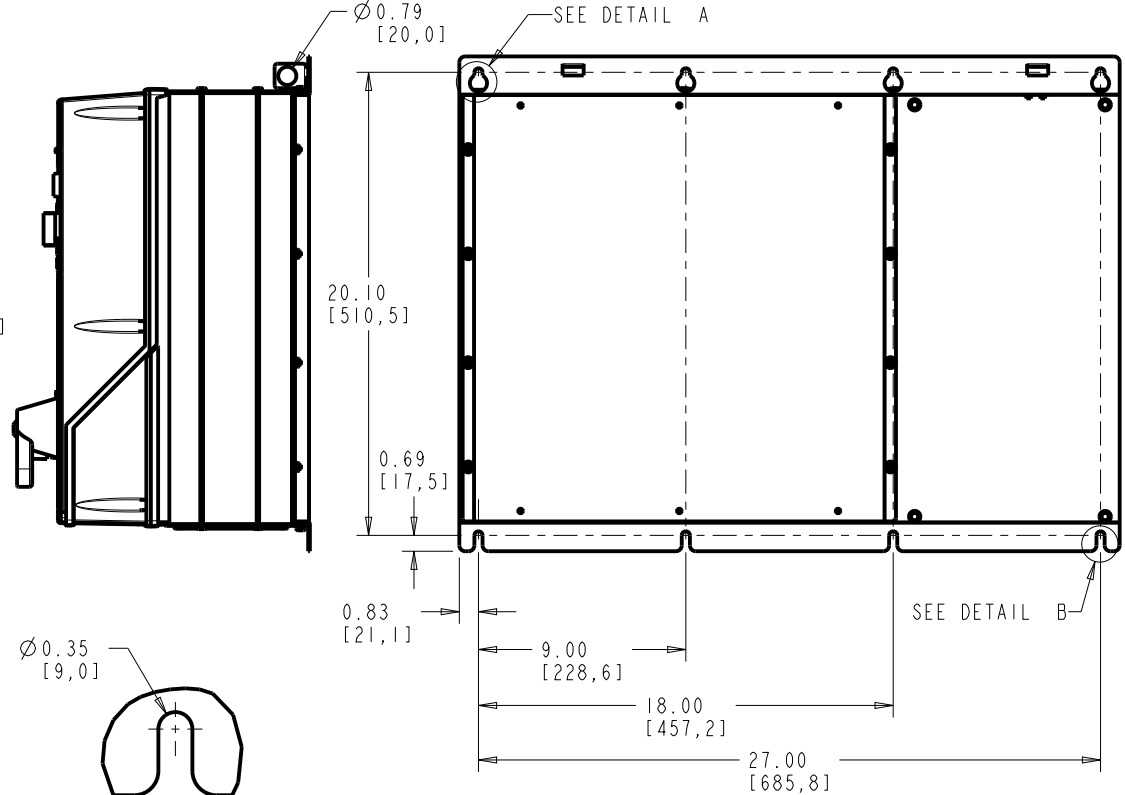
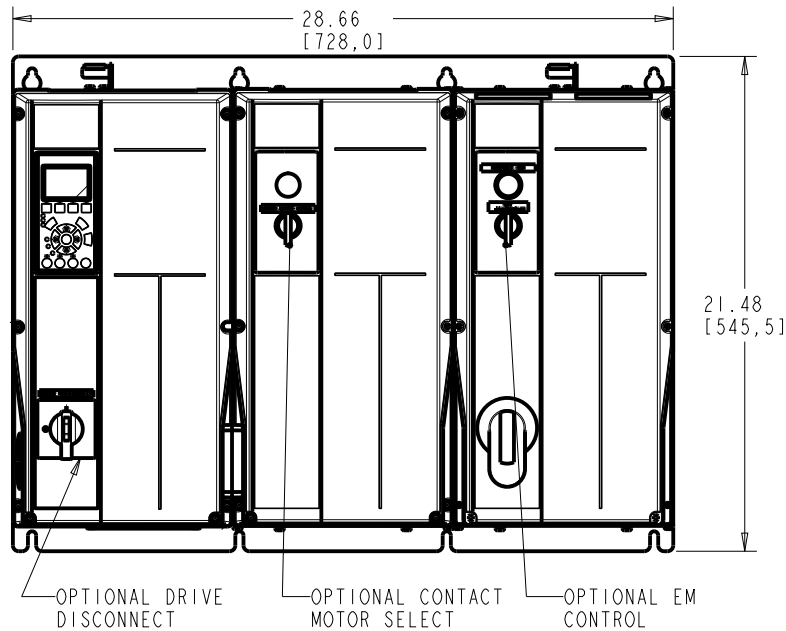


4

3

2

1



FRAME SIZE B1		
VOLTAGE	HP	KW
208/230	7.5-10	5.5-7.5
460/600	15-25	11-18.5

CLEARANCE REQUIREMENT FOR AIR FLOW COOLING:
 THE UNIT MUST BE INSTALLED VERTICALLY WITH THE MINIMUM CLEARANCE OF 3.94in [100.0mm] ON THE TOP AND BOTTOM. ALL UL NEMA TYPE 1/1P21 AND NEMA TYPE 12/1P54 UNITS MAY BE MOUNTED SIDE BY SIDE WITH NO MINIMUM SIDE CLEARANCE.

WEIGHT: 110 lbs [50 kg]

-NOTICE-
 THIS DRAWING IS PROPRIETARY AND SHALL NOT BE COPIED OR ITS CONTENTS DISCLOSED TO OUTSIDE PARTIES WITHOUT THE WRITTEN CONSENT OF THE TRANE COMPANY

PRO-E ENTRY BY/DATE:
 MN 10/20/08

DESIGNED BY/DATE:
 MN 10/20/08

APPROVAL:

CHECKED BY/DATE:

MFG. APPROVAL BY/DATE:

ENG. APPROVAL BY/DATE:

THE TRANE COMPANY

TITLE: DWG, REF, SUBMITTAL, B1 T3

LATEST E.C.N. NO.:	E.C.N. PRO-E ENTRY BY/DATE:	PLOT SCALE:	PRO-E FILE:	SHEET:	OF:	DRAWING NO.:	REV.:
SP10100	SAK 09/10/01	NONE		1	1	174N3463	A

4

3

2

1