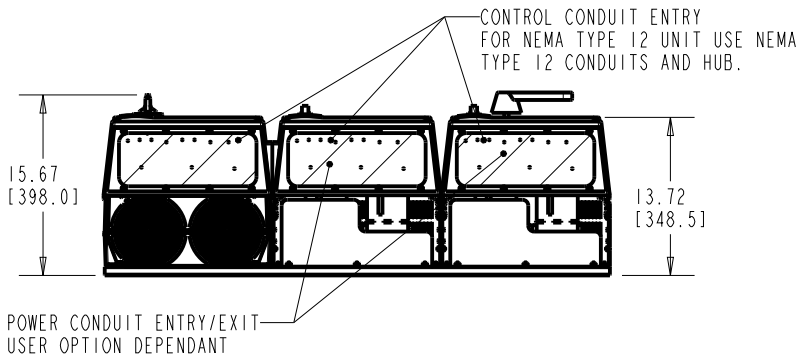
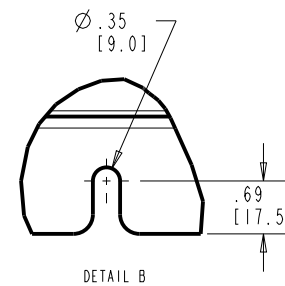
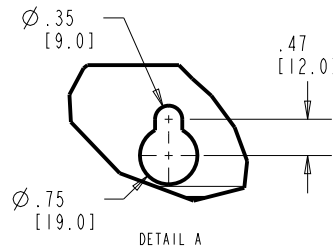
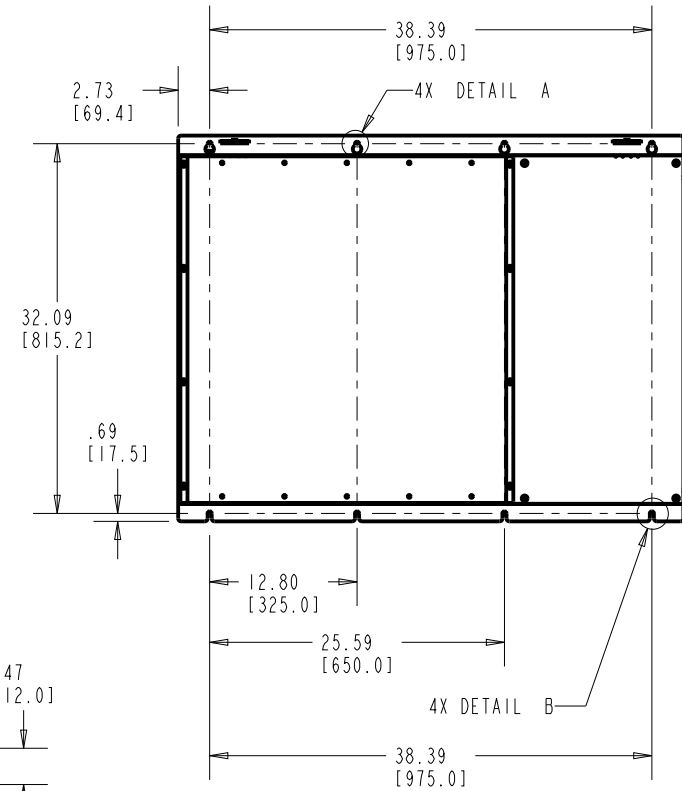
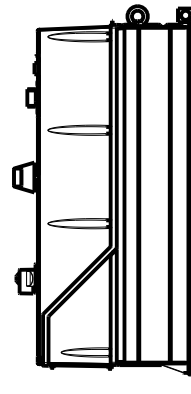
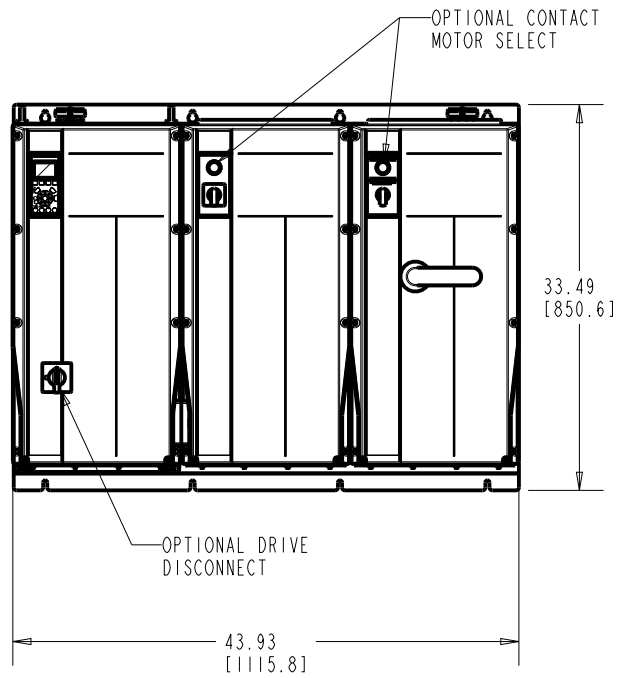


4

3

2

1



FRAME SIZE C2		
VOLTAGE	HP	KW
208/230	40-60	30-45
460/600	100-125	75-90

CLEARANCE REQUIREMENT FOR AIR FLOW COOLING:
 THE UNIT MUST BE INSTALLED VERTICALLY WITH THE MINIMUM CLEARANCE OF 8.86 in [225.0mm] ON THE TOP AND BOTTOM. ALL UL NEMA TYPE 1/1P21 AND NEMA TYPE 12/1P54 UNITS MAY BE MOUNTED SIDE BY SIDE WITH NO MINIMUM SIDE CLEARANCE.

WEIGHT: 285 lbs [129 kg]

-NOTICE-
 THIS DRAWING IS PROPRIETARY AND SHALL NOT BE COPIED OR ITS CONTENTS DISCLOSED TO OUTSIDE PARTIES WITHOUT THE WRITTEN CONSENT OF THE TRANE COMPANY

PRO-E ENTRY BY/DATE:
 MN 10/20/08

CHECKED BY/DATE:

DESIGNED BY/DATE:
 MN 10/20/08

MFG. APPROVAL BY/DATE:

APPROVAL:

ENG. APPROVAL BY/DATE:

THE TRANE COMPANY

TITLE:
 DWG, REF, SUBMITTAL, C2 - TIER 3

LATEST E.C.N. NO.:

SPI0100

E.C.N. PRO-E ENTRY BY/DATE:

SAK 09/01/10

PLOT SCALE:

NONE

PRO-E FILE:

SHEET:

OF:

DRAWING NO.:

174N3471

REV.:

A

4

3

2

1