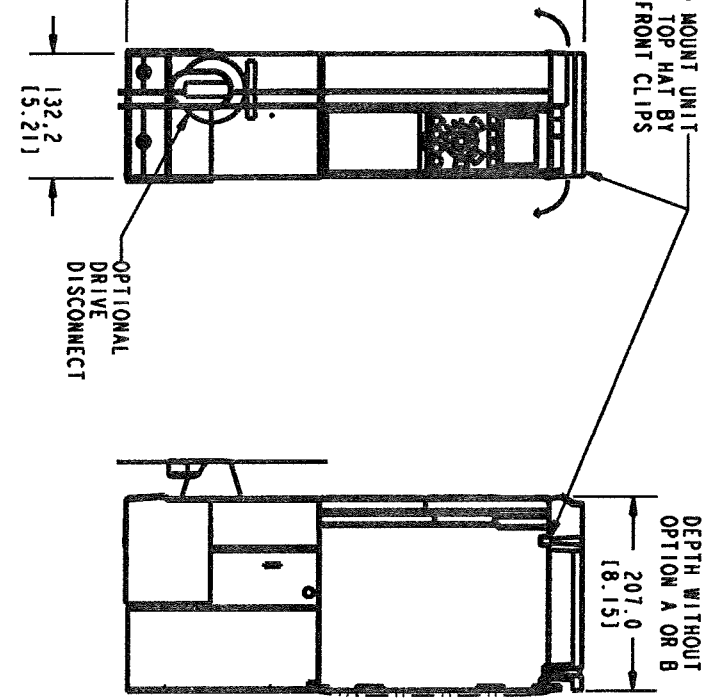
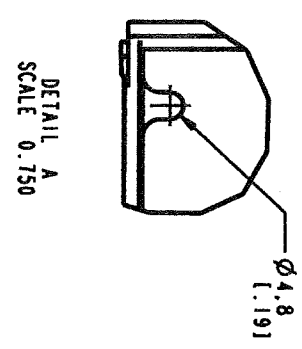
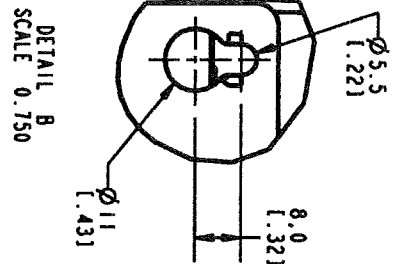
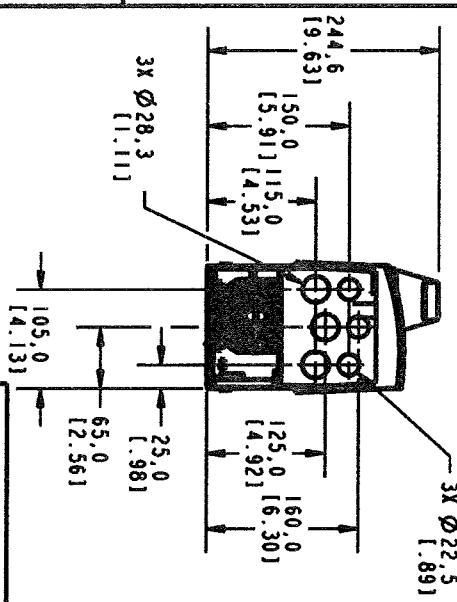
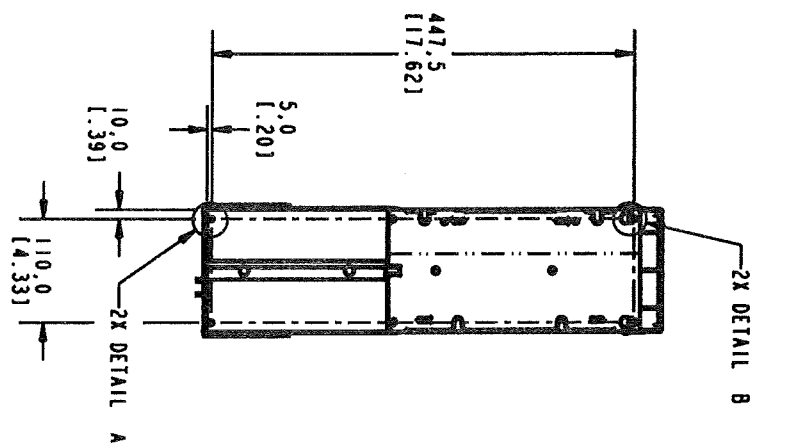
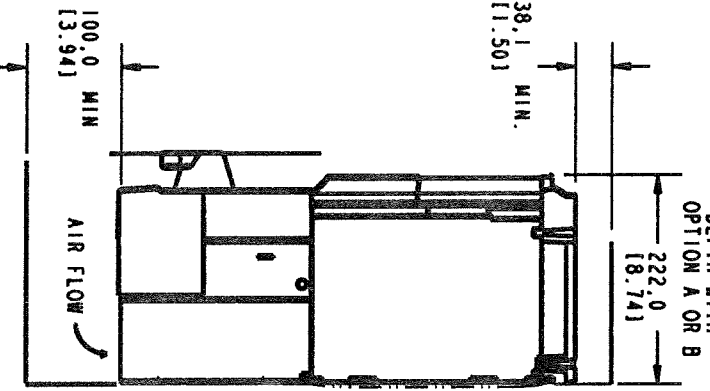


TO MOUNT UNIT  
REMOVE TOP HAT BY  
UNSNAPPING FRONT CLIPS



DEPTH WITHOUT  
OPTION A OR B  
207.0 [8.151]



FRAME SIZE A2 AND A3		HP	KW
208/230	0.5-5	1.1-3.7	
460/600	0.5-10	1.1-7.5	

UNIT COOLING:  
THE UNIT MUST BE INSTALLED VERTICALLY WITH THE MINIMUM FREE SPACE. ALLOW 38.1 (1.50 INCHES) ON EITHER SIDE FOR UNIT COOLING.

NOTICE:  
THIS DRAWING IS PROPRIETARY AND SHALL NOT BE COPIED OR ITS CONTENTS DISCLOSED TO OUTSIDE PARTIES WITHOUT THE WRITTEN CONSENT OF THE TRANE COMPANY

LATEST E.C.N. NO.:		E.C.N. PRO-E ENTRY BY/DATE:		PRO-E ENTRY BY/DATE:		DESIGNED BY/DATE:		APPROVAL:		TITLE:	
				MN 10/20/08		MN 10/20/08		NONE		DWG. REF. SUBMITTAL, A2-A3-TIER 1, P650	
				12/11/08		12/11/08				THE TRANE COMPANY A DIVISION OF AMERICAN STANDARD INC.	
				12/11/08						DRAWING NO.: 174N3472	