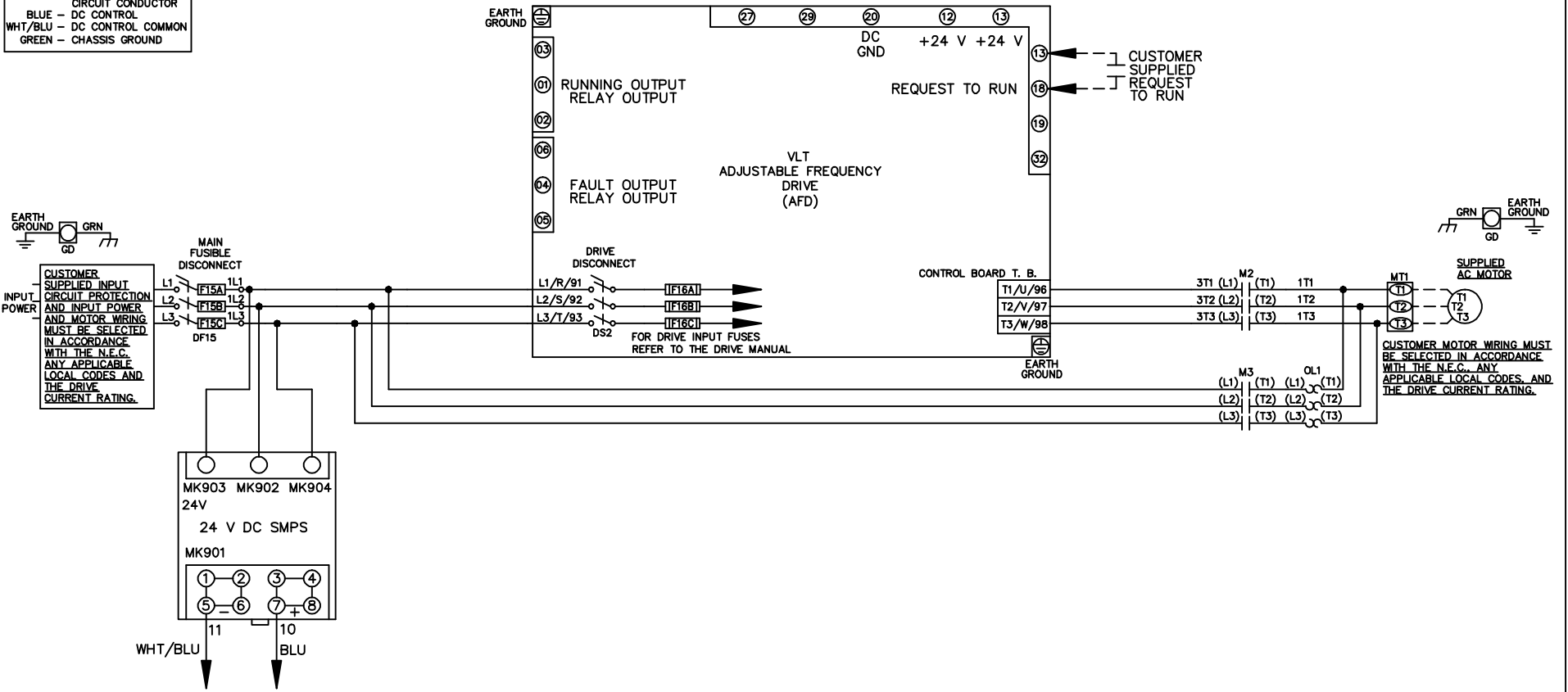


WIRE COLOR SCHEME
 BLACK - LINE VOLTAGE
 RED - AC CONTROL
 WHITE - AC GROUNDED
 CIRCUIT CONDUCTOR
 BLUE - DC CONTROL
 WHT/BLU - DC CONTROL COMMON
 GREEN - CHASSIS GROUND



-NOTICE-

"THIS DRAWING AND THE INFORMATION DEPICTED THEREIN IS THE PROPERTY OF ITT. COPIES ARE ISSUED IN STRICT CONFIDENCE AND SHALL NOT BE REPRODUCED OR COPIED, OR USED AS THE BASIS FOR THE MANUFACTURE OR SALE OF PRODUCTS WITHOUT PRIOR WRITTEN PERMISSION OF ITT".

DRN JNW
2/14/07

NAME 208-600VOLT, 2C, MAIN & DRIVE DISC
 FUSIBLE, ECB, FRAME A5-B1
 ,NO REACTOR & DVDT, SINGLE MTR

ITT
Residential & Commercial Water
Morton Grove, IL USA

A	SP08061	10/08
REV	ECN	DATE

APR

MODEL

PAGE 1 OF 2

SIZE A

DWG NO.

174N3566

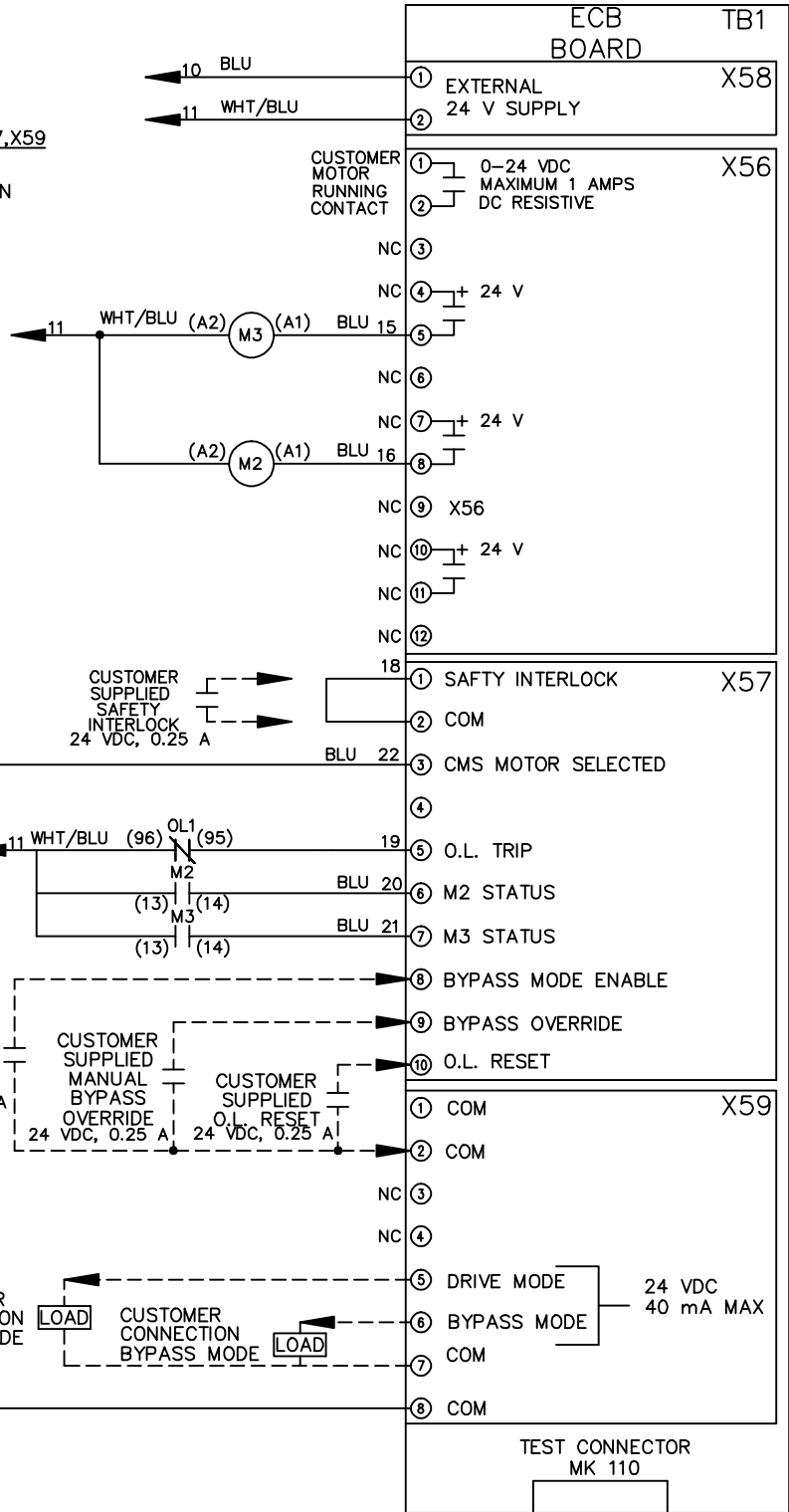
REV	A	ECN	10/08	DATE
SP080066				

THIS DRAWING AND THE INFORMATION DEPICTED THEREIN IS THE PROPERTY OF TTI. COPIES ARE ISSUED IN STRICT CONFIDENCE AND SHALL NOT BE REPRODUCED OR COPIED, OR USED AS THE BASIS FOR THE MANUFACTURE OR SALE OF PRODUCTS WITHOUT PRIOR WRITTEN PERMISSION OF TTI.

-NOTICE-

CUSTOMER CONNECTIONS X56,X57,X59

CLASS 2 POWER SOURCE
REQUIRED FOR FIELD CONNECTION
USE CLASS 1 CONDUCTORS
CONDUCTOR SIZE 28-14 AWG



DRN	JNW
2/14/07	
APR	

NAME	208-600VOLT,2C,MAIN&DRIVE DISC
MODEL	FUSIBLE,ECB,FRAME A5-B1, NO REACTOR & DVDI,SINGLE MTR
PAGE	2 OF 2
SIZE	A
DWG NO.	174N3566

