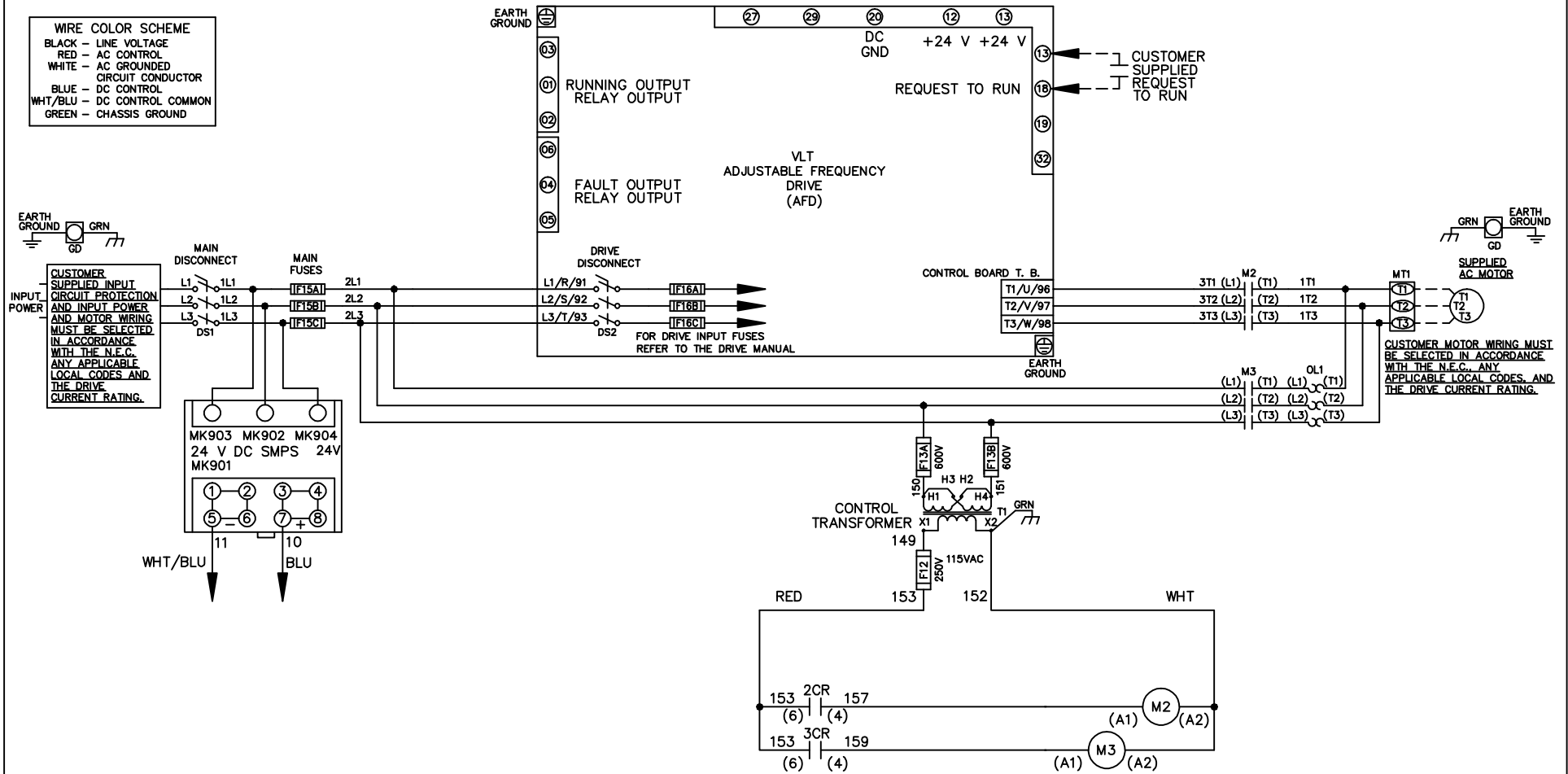


**WIRE COLOR SCHEME**  
 BLACK - LINE VOLTAGE  
 RED - AC CONTROL  
 WHITE - AC GROUNDED  
 CIRCUIT CONDUCTOR  
 BLUE - DC CONTROL  
 WHT/BLU - DC CONTROL COMMON  
 GREEN - CHASSIS GROUND



REV	ECN	DATE
A	SP08061	10/08

-NOTICE-

\*THIS DRAWING AND THE INFORMATION DEPICTED THEREIN IS THE PROPERTY OF I.T.T. COPIES ARE ISSUED IN STRICT CONFIDENCE AND SHALL NOT BE REPRODUCED OR COPIED, OR USED AS THE BASIS FOR THE MANUFACTURE OR SALE OF PRODUCTS WITHOUT PRIOR WRITTEN PERMISSION OF I.T.T.\*

DRN JNW  
 2/14/07  
 APR

NAME 230 VOLT, 2C, MAIN & DRIVE DISC  
 , MAIN FUSE, ECB, FRAME C2N1\_  
 , NO REACTOR & DVDT, SINGLE MTR

MODEL

ITT  
 Residential & Commercial Water  
 Morton Grove, IL USA

PAGE 1 OF 2  
 SIZE A  
 DWG NO. 174N3569

REV	A	ECN	SP08066	DATE	10/08
-----	---	-----	---------	------	-------

—NOTICE—  
 THIS DRAWING AND THE INFORMATION DEPICTED THEREIN IS THE PROPERTY OF ITT. COPIES ARE ISSUED IN STRICT CONFIDENCE AND SHALL NOT BE REPRODUCED OR COPIED, OR USED AS THE BASIS FOR THE MANUFACTURE OR SALE OF PRODUCTS WITHOUT PRIOR WRITTEN PERMISSION OF ITT.

DRN JNW  
 2/14/07  
 APR

NAME 230 VOLT, 2C, MAIN & DRIVE DISC  
 , MAIN FUSE, ECB, FRAME C2N1  
 , NO REACTOR & DVDI, SINGLE MTR

MODEL

PAGE 2 OF 2

SIZE A

DWG NO. 174N3569

ITT  
 Residential & Commercial Water  
 Motion Control, IL USA

CUSTOMER CONNECTIONS X56, X57, X59  
 CLASS 2 POWER SOURCE  
 REQUIRED FOR FIELD CONNECTION  
 USE CLASS 1 CONDUCTORS  
 CONDUCTOR SIZE 28-14 AWG

