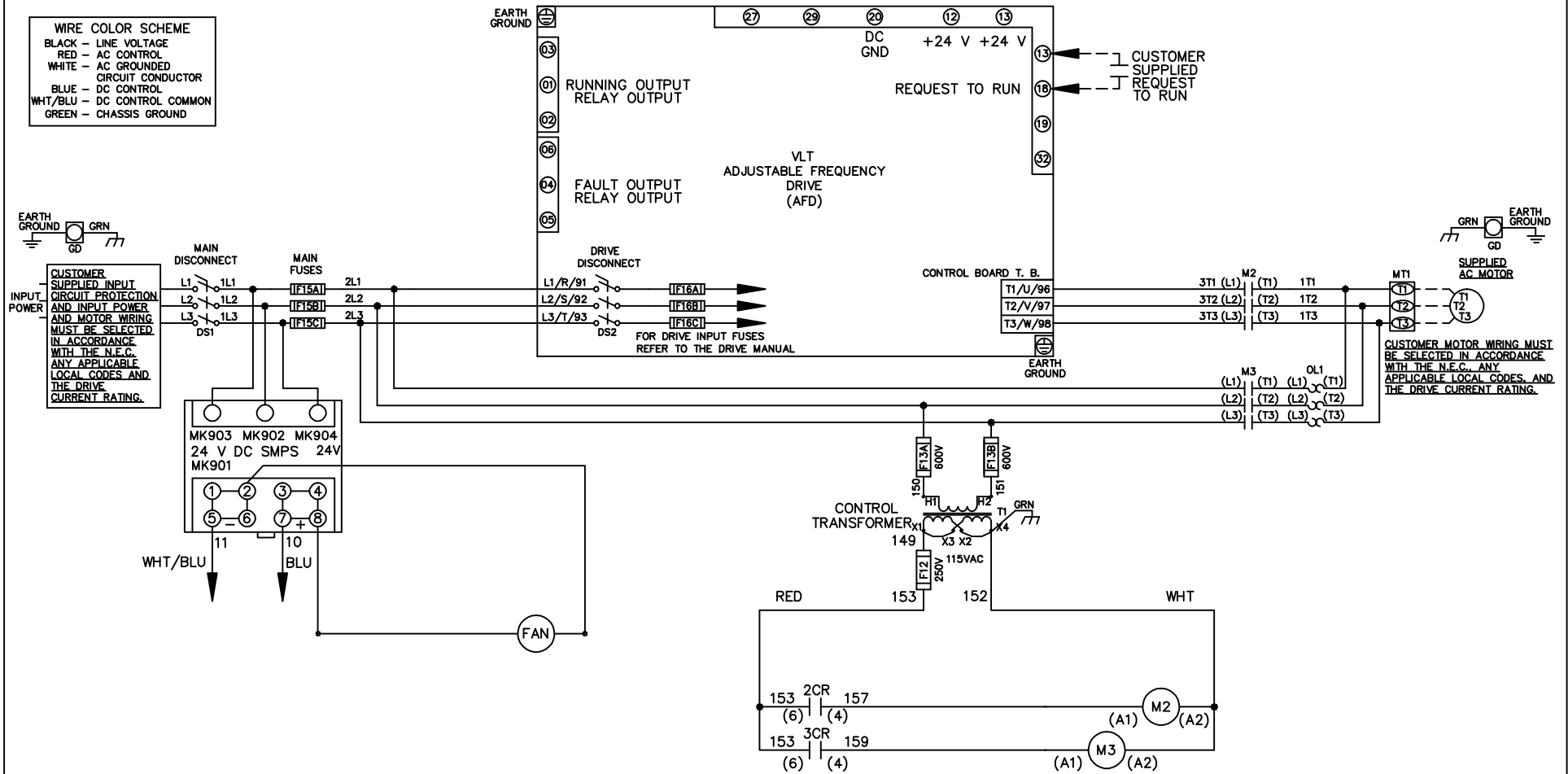


WIRE COLOR SCHEME
 BLACK - LINE VOLTAGE
 RED - AC CONTROL
 WHITE - AC GROUNDED
 CIRCUIT CONDUCTOR
 BLUE - DC CONTROL
 WHT/BLU - DC CONTROL COMMON
 GREEN - CHASSIS GROUND



REV	ECN	DATE
A	SP08061	10/08

-NOTICE-

THIS DRAWING AND THE INFORMATION DEPICTED THEREIN IS THE PROPERTY OF I.T. COPIES ARE ISSUED IN STRICT CONFIDENCE AND SHALL NOT BE REPRODUCED OR COPIED, OR USED AS THE BASIS FOR THE MANUFACTURE OR SALE OF PRODUCTS WITHOUT PRIOR WRITTEN PERMISSION OF I.T.

DRN JNW
2/14/07
APR

NAME 600 VOLT, 2C, MAIN & DRIVE DISC
 , MAIN FUSE, ECB, FRAME C2N12
 , NO REACTOR & DVDT, SINGLE MTR

MODEL

ITT
Residential & Commercial Water
Morton Grove, IL USA

PAGE 1 OF 2
SIZE A
DWG NO. 174N3575

REV	ECN	DATE
A	SP08066	10/08

THIS DRAWING AND THE INFORMATION DEPICTED THEREIN IS THE PROPERTY OF ITT. COPIES ARE ISSUED IN STRICT CONFIDENCE AND SHALL NOT BE REPRODUCED OR COPIED, OR USED AS THE BASIS FOR THE MANUFACTURE OR SALE OF PRODUCTS WITHOUT PRIOR WRITTEN PERMISSION OF ITT.

DRN JNW
2/14/07
APR

NAME 600 VOLT, 2C, MAIN & DRIVE DISC
, MAIN FUSE, ECB, FRAME C2N12
, NO REACTOR & DVDI, SINGLE MTR

MODEL

PAGE 2 OF 2

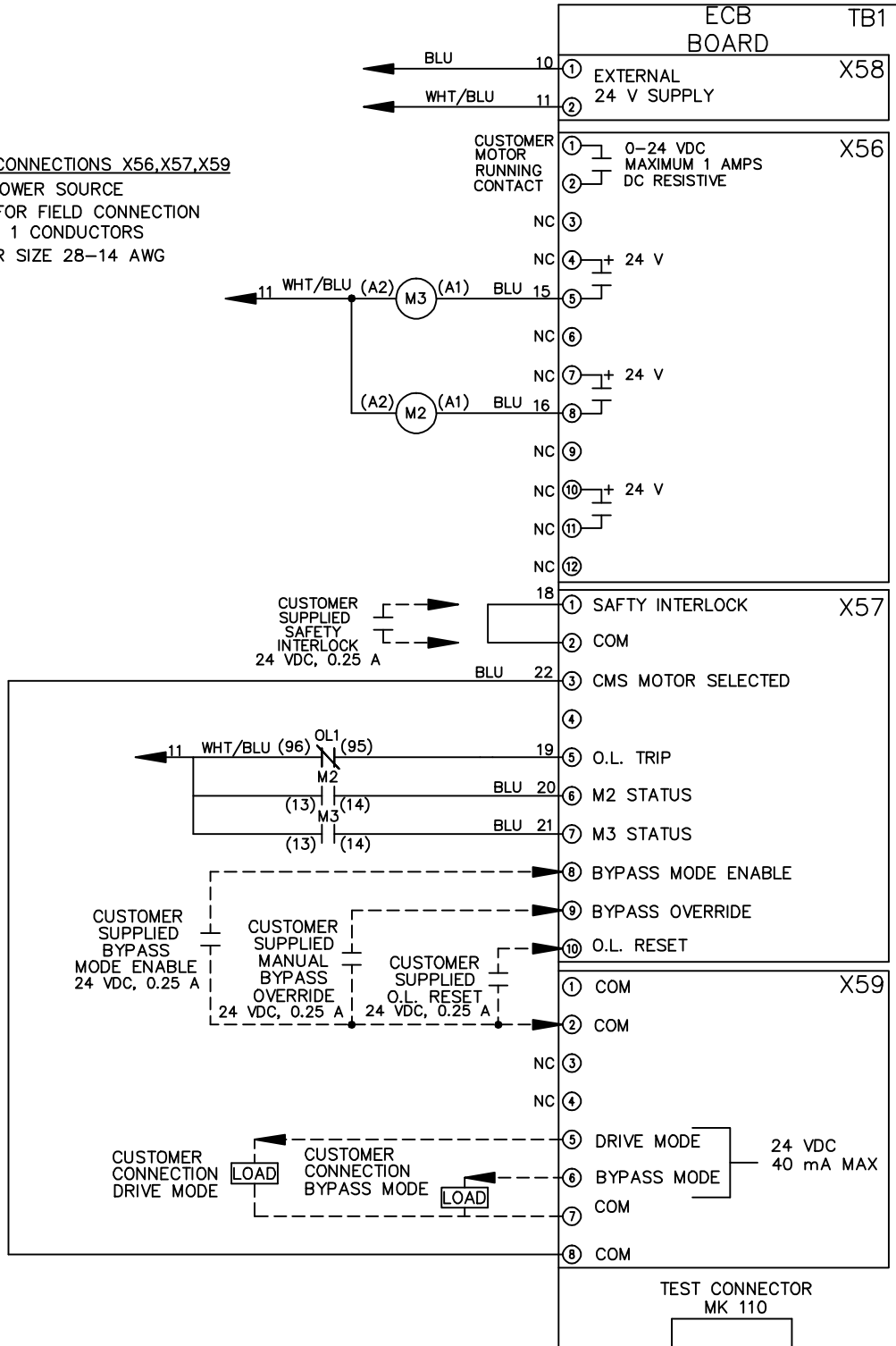
SIZE A

DWG NO. 174N3575

ITT
Residential & Commercial Water
Morton Grove, IL USA

CUSTOMER CONNECTIONS X56, X57, X59
CLASS 2 POWER SOURCE
REQUIRED FOR FIELD CONNECTION
USE CLASS 1 CONDUCTORS
CONDUCTOR SIZE 28-14 AWG

NOTICE



ECB BOARD TB1

① EXTERNAL 24 V SUPPLY X58
②

CUSTOMER MOTOR RUNNING CONTACT X56
① 0-24 VDC MAXIMUM 1 AMPS DC RESISTIVE
②
NC ③

NC ④ + 24 V
⑤
NC ⑥
NC ⑦ + 24 V
⑧
NC ⑨
NC ⑩ + 24 V
NC ⑪
NC ⑫

① SAFETY INTERLOCK X57
② COM

③ CMS MOTOR SELECTED
④
⑤ O.L. TRIP
⑥ M2 STATUS
⑦ M3 STATUS
⑧ BYPASS MODE ENABLE
⑨ BYPASS OVERRIDE
⑩ O.L. RESET

① COM X59
② COM

NC ③
NC ④
⑤ DRIVE MODE
⑥ BYPASS MODE 24 VDC 40 mA MAX
⑦ COM
⑧ COM

TEST CONNECTOR MK 110