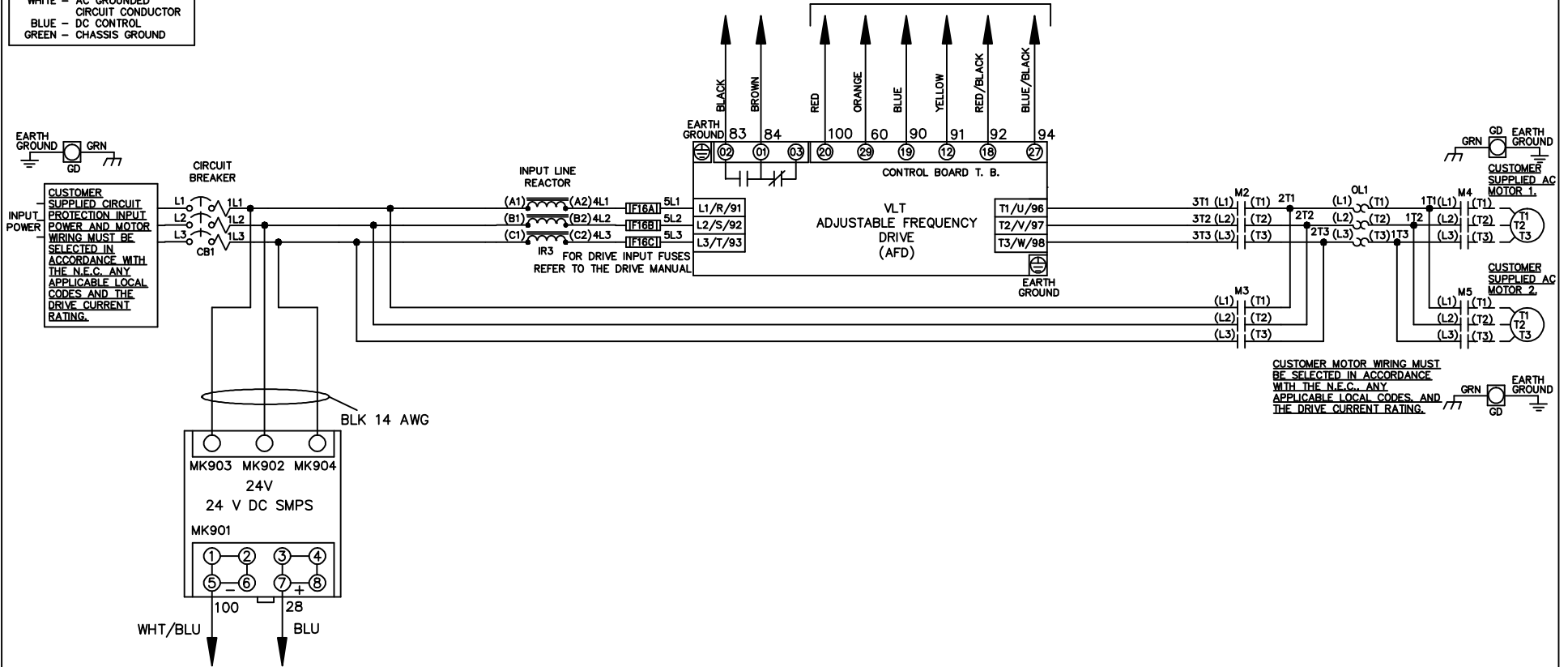


WIRE COLOR SCHEME
 BLACK - LINE VOLTAGE
 RED - AC CONTROL
 WHITE - AC GROUNDED
 BLUE - DC CONTROL
 GREEN - CHASSIS GROUND

* ALL CONTROL WIRES ARE BLUE EXCEPT WHERE NOTED.

TO ELECTROMECHANICAL RELAY BOARD



| | | |
|-----|-----|------|
| REV | ECN | DATE |
| | | |

- NOTICE -
 THIS DOCUMENT CONTAINS PROPRIETARY INFORMATION OF DANFOSS DRIVES. IT IS LOANED BY DANFOSS DRIVES SUBJECT TO THE CONDITIONS THAT IT AND THE INFORMATION EMBODIED THEREIN SHALL BE USED ONLY FOR RECORD AND REFERENCE PURPOSES, SHALL NOT BE USED OR CAUSED TO BE USED IN ANY WAY PREJUDICIAL TO THE INTERESTS OF DANFOSS DRIVES, SHALL NOT BE REPRODUCED OR COPIED IN WHOLE OR IN PART, OR DISCLOSED TO ANYONE WITHOUT THE DIRECT WRITTEN PERMISSION OF DANFOSS DRIVES AND SHALL BE RETURNED UPON REQUEST.

DRN JNW
 2/14/07
 APR

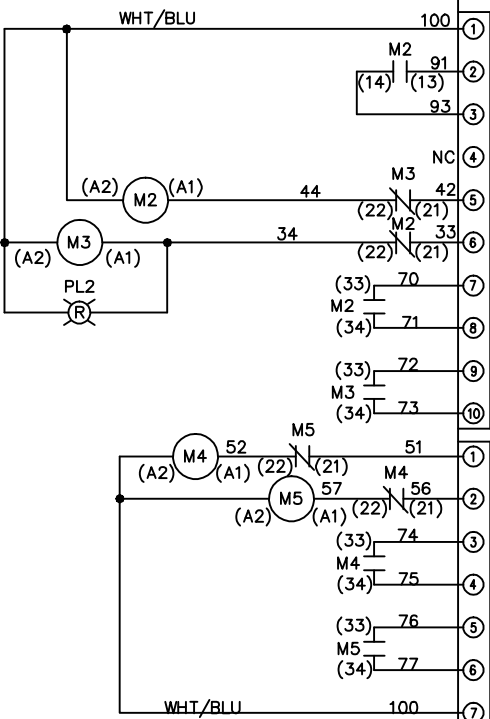
NAME 208-600VOLT,2C,CB
 ,DRIVE FUSE,EMB2,FRAME A2-A3
 ,REACTOR,CMS
 MODEL VLT
 PAGE 1 OF 2
 SIZE A
 DWG NO. 174U0001



| | | | | | | | | | | | | | | | |
|-----|-----|------|-----|---------|---|------|------|---|----|---|------|---|-----|-----|----------|
| REV | ECN | DATE | DRN | JNW | MODEL | VL T | PAGE | 2 | OF | 2 | SIZE | A | DWG | NO. | 174U0001 |
| | | | APR | 2/14/07 | NAME 208-600VOLT, 2C, CB , DRIVE FUSE, EMB2, FRAME A2-A3 , REACTOR, CMS | | | | | | | | | | |

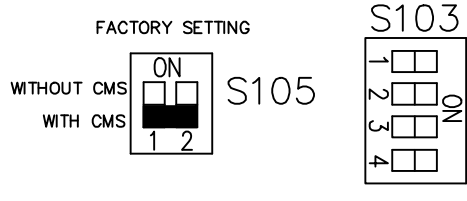
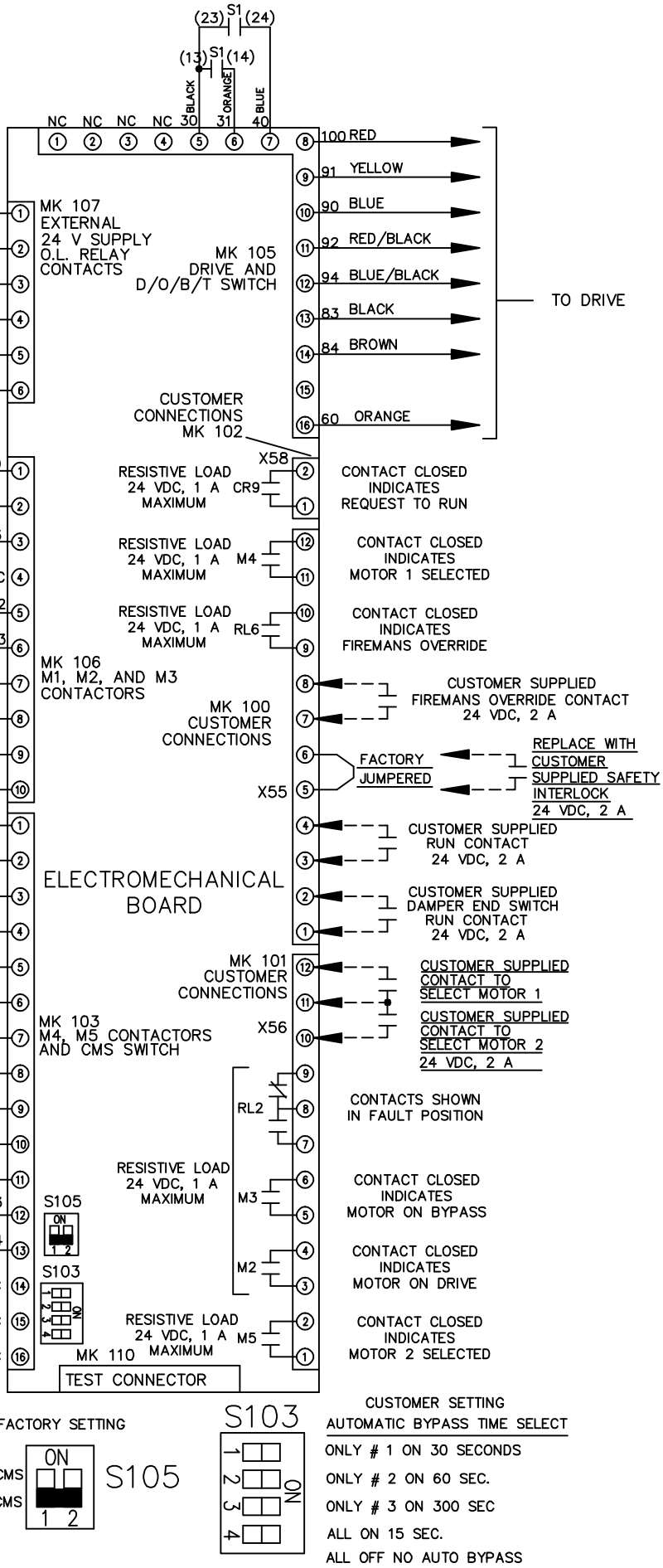
CONTACT SEQUENCE CHART FOR S1
X INDICATES CONTACT CLOSED

| POSITION | CONTACT | DRIVE | OFF | BYPASS |
|----------|---------|-------|-----|--------|
| 13-14 | | | | X |
| 23-24 | X | | | |



CONTACT SEQUENCE CHART FOR S2
X INDICATES CONTACT CLOSED

| POSITION | CONTACT | MOTOR 1 | AUTO | MOTOR 2 |
|----------|---------|---------|------|---------|
| 11-12 | | X | X | |
| 13-14 | | | | X |
| 21-22 | | X | | |
| 23-24 | X | | | |



CUSTOMER SETTING
AUTOMATIC BYPASS TIME SELECT

ONLY # 1 ON 30 SECONDS

ONLY # 2 ON 60 SEC.

ONLY # 3 ON 300 SEC

ALL ON 15 SEC.

ALL OFF NO AUTO BYPASS

NOTICE

THIS DOCUMENT CONTAINS PROPRIETARY INFORMATION OF DANFOSS DRIVES. IT IS LOANED BY DANFOSS DRIVES SUBJECT TO THE CONDITIONS THAT IT AND THE INFORMATION EMBODIED THEREIN SHALL BE USED ONLY FOR RECORD AND REFERENCE PURPOSES. SHALL NOT BE USED OR CAUSED TO BE USED IN ANY WAY PREJUDICIAL TO THE INTERESTS OF DANFOSS DRIVES. SHALL NOT BE REPRODUCED OR COPIED IN WHOLE OR IN PART, OR DISCLOSED TO ANYONE WITHOUT THE DIRECT WRITTEN PERMISSION OF DANFOSS DRIVES AND SHALL BE RETURNED UPON REQUEST.

